



GARVER | ENGINEERS

1010 BATTERY STREET
LITTLE ROCK, ARKANSAS 72202
www.garverengineers.com
(501) 376-3633

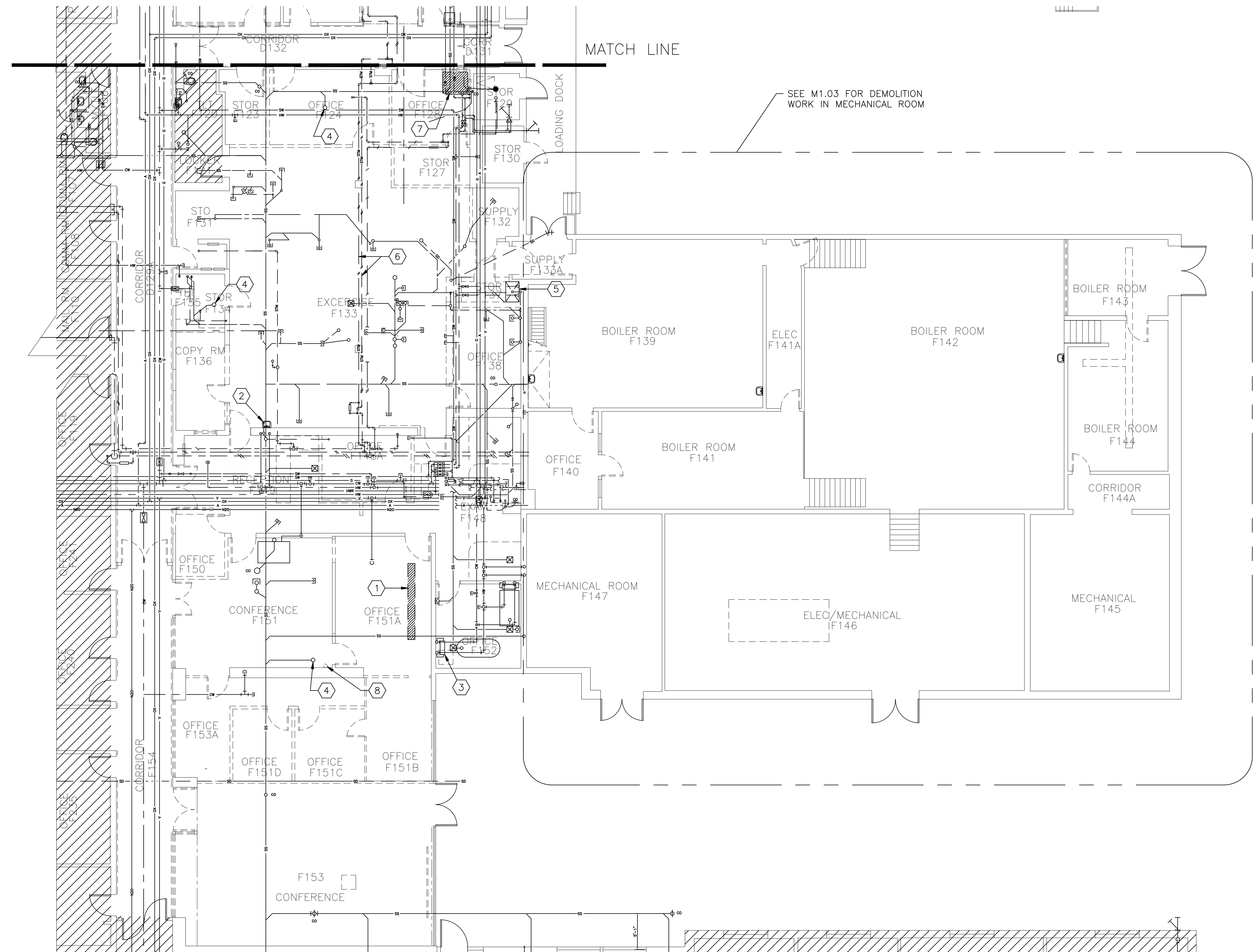
CROMWELL
ARCHITECTS ENGINEERS
101 SOUTH SPRING ST
LITTLE ROCK AR 72201
TELEPHONE 501-372-2900
FACSIMILE 501-372-0482

[illegible]

REPAIR & RENOVATE MEDICAL CLINIC PH IV
 635 LITTLE ROCK AIR FORCE BASE
 JACKSONVILLE, ARKANSAS

DRAWN BY JCF	LEAD DESIGNER
TECH REVIEWER CAG	PROJECT NUMBER NKAK#06-8006-4
DESIGNED BY	SHEET P-102
DATE JULY 1, 2008 AS SHOWN	<u>22</u>
AS NOTED	OF

PLUMBING
DEMOLITION PLAN AREA "B"



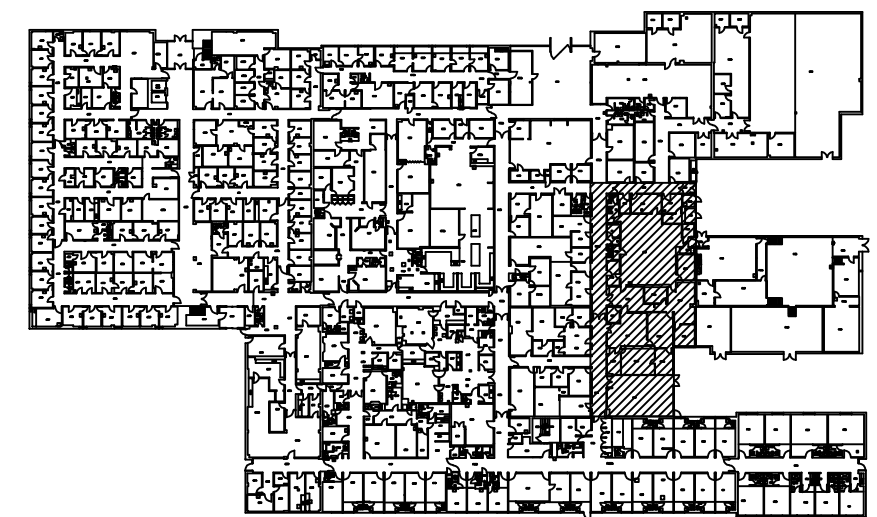
LEGEND

— HW — HOT WATER
 — CW — COLD WATER
 — SS — SANITARY SEWER
 ● POINT OF CONNECTION
 (NEW TO EXISTING)

KEYED NOTES:

- 1 SAW CUT EXISTING SLAB FOR NEW SINK DRAIN INSTALLATION.
- 2 EXISTING HANDWASH SINK TO REMAIN.
- 3 EXISTING HOT/COLD HOSE BIBB TO REMAIN. EXISTING ICEMAKER TO BE RELOCATED.
- 4 FLOOR DRAIN TO BE ABANDONED. INSTALL GASKETED SOLID STRAINER PLATE. COORDINATE WITH ARCHITECT FOR FLOOR REPAIR. REFER TO DETAIL, SHEET P-301.
- 5 REMOVE EXISTING FLOOR MOUNTED SERVICE SINK AND ASSOCIATED WATER PIPING. PLUG DRAIN PIPE. REFER TO DETAIL, SHEET P-301.
- 6 REMOVE ABANDONED STEAM LINES. STEAM PIPING INSULATION CONTAINS KNOWN ASBESTOS.
- 7 SAW CUT EXISTING SLAB FOR NEW FLOOR DRAIN INSTALLATION AT NEW RELOCATED ICEMAKER LOCATION.
- 8 ABANDONED PIPE THRU FLOOR SLAB. CUT OFF BELOW SLAB. INSTALL GASKETED SOLID STRAINER PLATE. COORDINATE WITH ARCHITECT FOR FLOOR REPAIR. REFER TO DETAIL, SHEET P-301.

1 PLUMBING DEMOLITION PLAN AREA "B"
P-102 SCALE: 1/8" = 1'-0"



KEY PLAN