

1 PLUMBING DEMOLITION PLAN AREA "A"
P-101 SCALE: 1/8" = 1'-0"

LEGEND

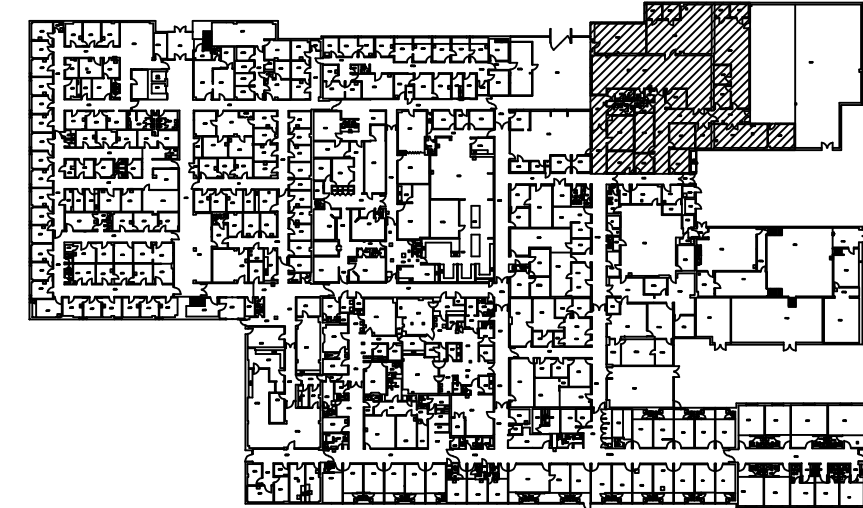
- HW — HOT WATER
- CW — COLD WATER
- SS — SANITARY SEWER
- POINT OF CONNECTION (NEW TO EXISTING)

KEYED NOTES:

- 1 REMOVE EXISTING LAVATORY FOR REPLACEMENT WITH NEW LAVATORY.
- 2 REMOVE EXISTING TWO COMPARTMENT SINK FOR REPLACEMENT WITH NEW SINGLE COMPARTMENT SINK AND PATCH WALL.
- 3 SAW CUT EXISTING SLAB FOR NEW SHOWER, DRAIN, AND FLOOR DRAIN INSTALLATION.
- 4 REMOVE ISOLATION VALVES FOR REPLACEMENT.
- 5 FLOOR DRAIN TO BE ABANDONED. INSTALL GASKETED SOLID STRAINER PLATE. COORDINATE WITH ARCHITECT FOR FLOOR REPAIR. REFER TO DETAIL, SHEET P-301.
- 6 REMOVE ABANDONED STEAM LINES. STEAM PIPING INSULATION CONTAINS KNOWN ASBESTOS.
- 7 REMOVE EXISTING WATER CLOSET FOR REPLACEMENT.
- 8 REMOVE EXISTING FLOOR MOUNTED SERVICE SINK FOR REPLACEMENT.
- 9 REMOVE EXISTING MEDICAL GAS SHUT-OFF VALVES. FURNISH LETTER OF CERTIFICATION TO OWNER UPON COMPLETION OF MEDICAL GAS PIPE ALTERATIONS.

GENERAL DEMOLITION NOTES:

1. ALL BRANCH PIPING ABANDONED BY THE REMOVAL OF FIXTURES SHALL BE REMOVED BACK TO THE NEAREST MAIN. DO NOT ABANDON IN PLACE.
2. CAP ALL VENTS THRU ROOF THAT ARE MADE OBSOLETE BY REMOVAL OF PLUMBING FIXTURES.



KEY PLAN



LITTLE ROCK A.F.B.
ARKANSAS

GARVER ENGINEERS

1010 BATTERY STREET
LITTLE ROCK, ARKANSAS 72202
www.garverengineers.com
(501) 376-3633

CROMWELL

ARCHITECTS ENGINEERS

101 SOUTH SPRING ST
LITTLE ROCK AR 72201
TELEPHONE 501-372-2900
FACSIMILE 501-372-0482

No.	Revision/Issue	Date	BY	APP'D

PROJECT TITLE
REPAIR & RENOVATE MEDICAL CLINIC PH IV
LITTLE ROCK AIR FORCE BASE
JACKSONVILLE, ARKANSAS
100% SUBMITTAL

PLUMBING
DEMOLITION PLAN AREA "A"

DRAWN BY JCF	LEAD DESIGNER JCF
TECH REVIEWER CAG	PROJECT NUMBER NKAK#06-8006-4
DESIGNED BY JCF	SHEET P-101
DATE JULY 11, 2008	21
SCALE AS NOTED	OF