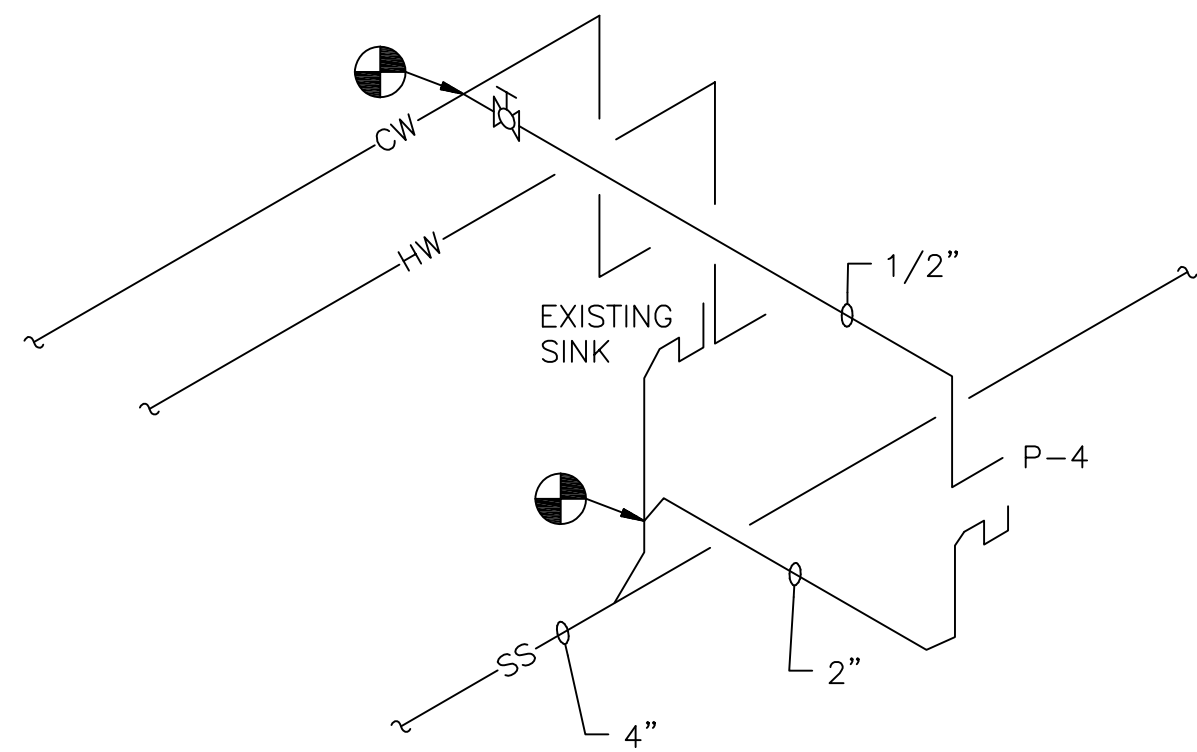
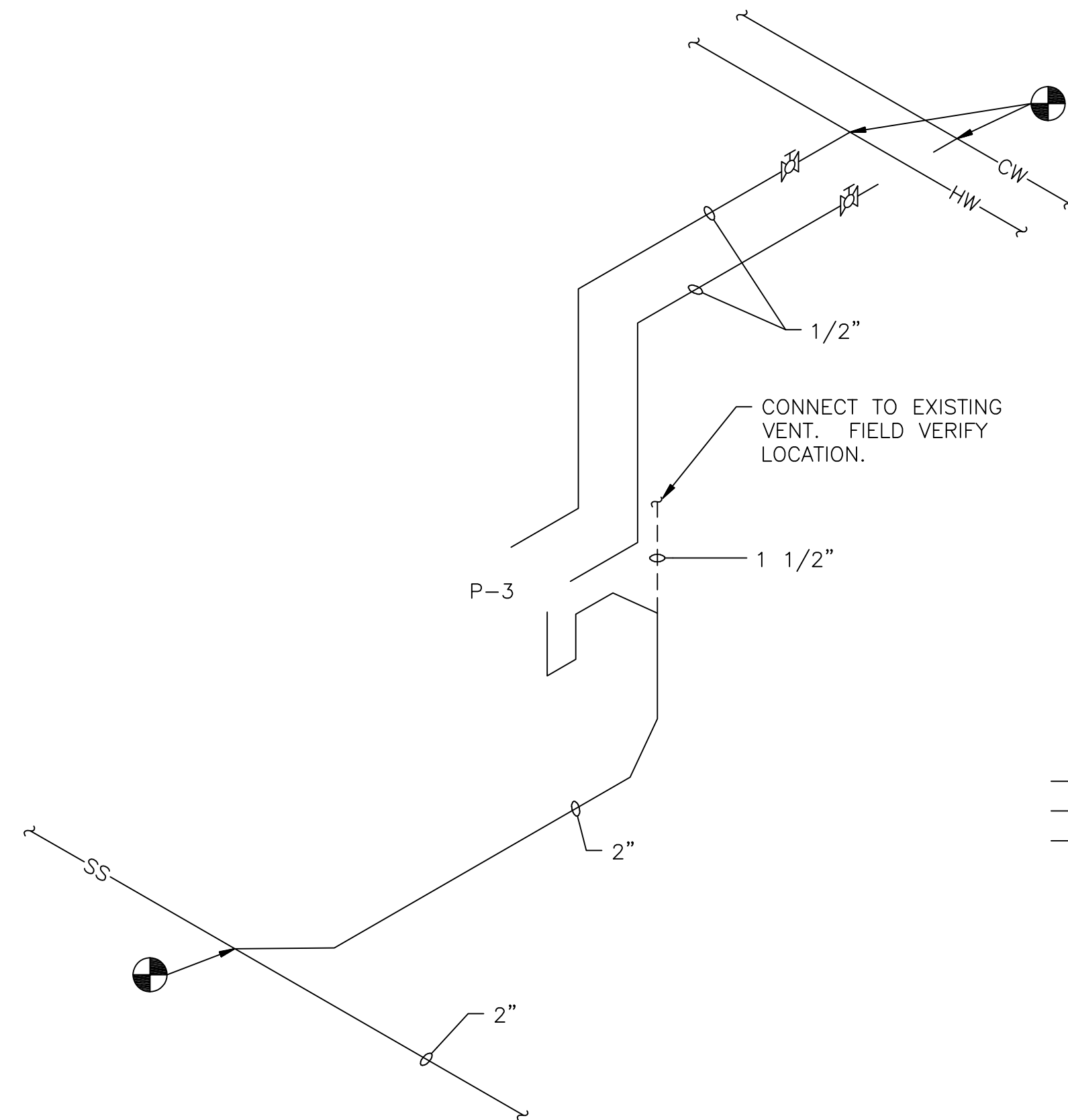


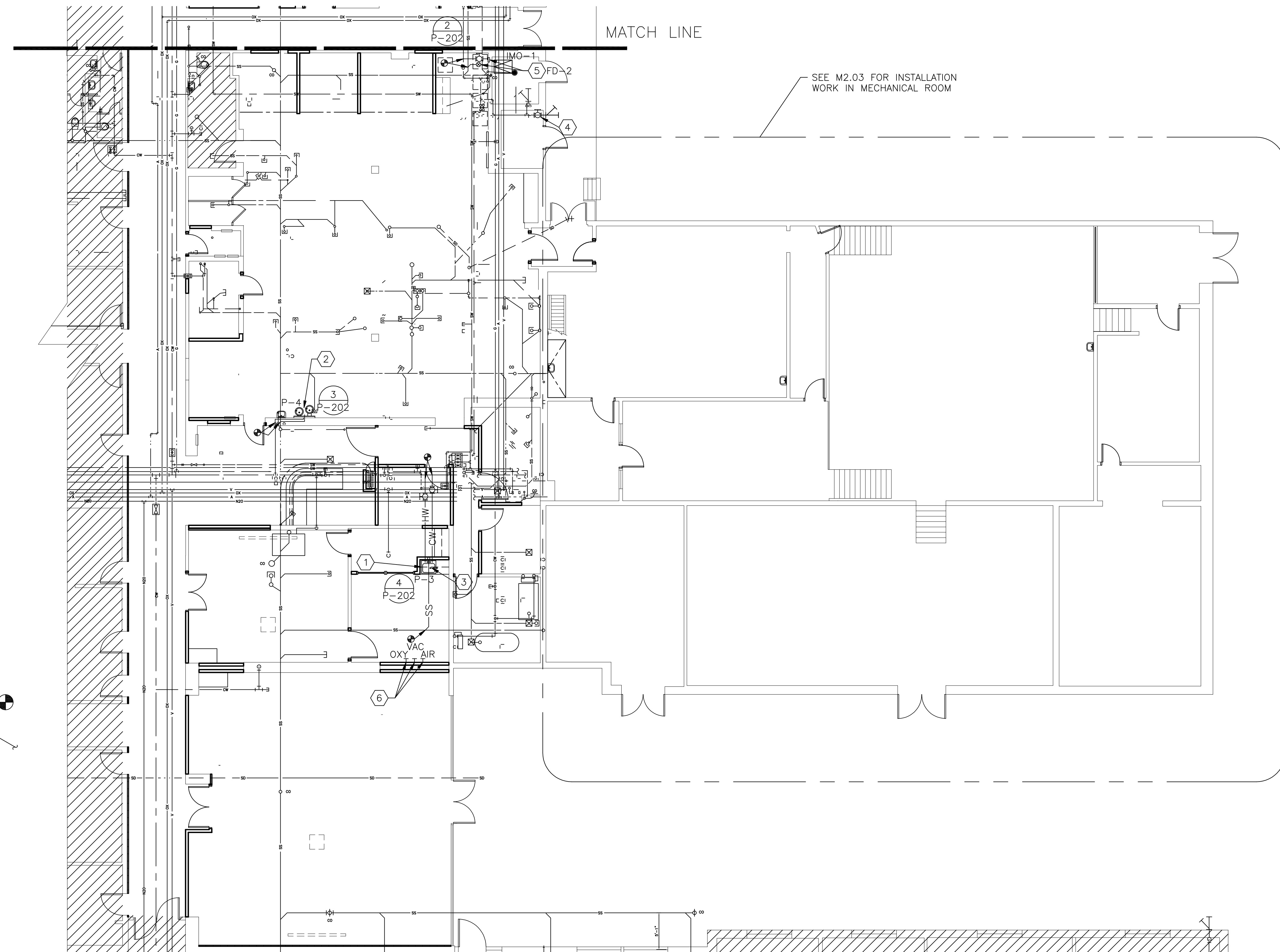
2 PARTIAL PLUMBING RISER DIAGRAM  
P-202 SCALE: NONE



3 PARTIAL PLUMBING RISER DIAGRAM  
P-202 SCALE: NONE



4 PARTIAL PLUMBING RISER DIAGRAM  
P-202 SCALE: NONE

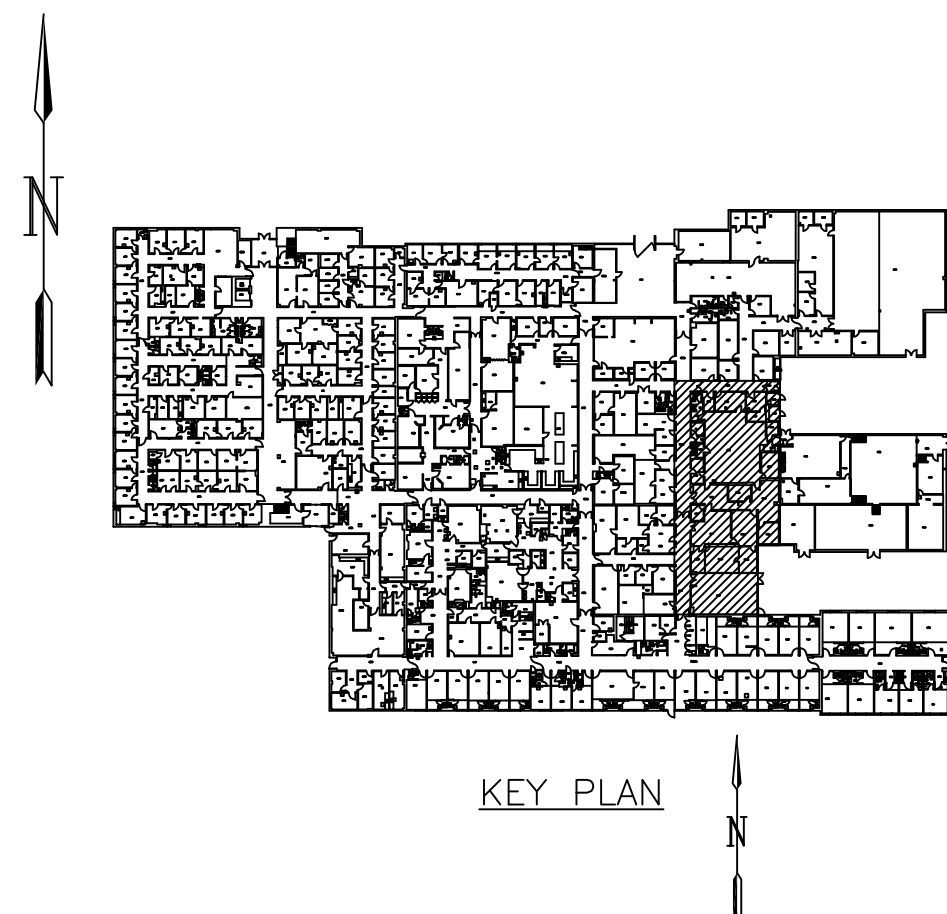


LEGEND	
— HW —	HOT WATER
— CW —	COLD WATER
— SS —	SANITARY SEWER
●	POINT OF CONNECTION (NEW TO EXISTING)

KEYED NOTES:

- 1 NEW SINGLE COMPARTMENT, STAINLESS STEEL, UNDERMOUNT SINK.
- 2 NEW WATER FOUNTAIN, 2 LEVEL COMBINATION HANDICAP. CONNECT TO EXISTING LAVATORY'S WATER AND DRAIN PIPES.
- 3 NEW COUNTER MOUNTED EYEWASH STATION. REFER TO PLUMBING FIXTURE SCHEDULE ON SHEET P-301.
- 4 INSTALL NEW ISOLATION BALL VALVE FOR EXISTING HOSE BIBB.
- 5 INSTALL NEW FLOOR DRAIN AND ICEMAKER OUTLET BOX FOR RELOCATED ICEMAKER. CONNECT TO EXISTING LINES.
- 6 INSTALL NEW RECESSED SLIDE BRACKET AND QUICK CONNECT FITTINGS FOR MEDICAL AIR, VACUUM AND OXYGEN. DO NOT PIPE THESE FITTINGS (FITTINGS ARE FOR TRAINING PURPOSES ONLY). INSTALL ENGRAVED SIGN WITH 1/4" LETTERING TO READ "DUMMY FITTINGS FOR TRAINING PURPOSES ONLY". FITTINGS SHALL BE DIAMOND COMPATIBLE WALL OUTLETS, OHIO MEDICAL MODEL 261010-1 FOR OXYGEN, 261010-5 FOR VACUUM AND 261010-13 FOR MEDICAL AIR OR EQUAL.

1 PLUMBING INSTALLATION PLAN AREA "B"  
P-202 SCALE: 1/8" = 1'-0"



LITTLE ROCK A.F.B.  
ARKANSAS

GARVER ENGINEERS

1010 BATTERY STREET  
LITTLE ROCK, ARKANSAS 72202  
www.garverengineers.com  
(501) 376-3633

CROMWELL  
ARCHITECTS ENGINEERS

101 SOUTH SPRING ST  
LITTLE ROCK AR 72201  
TELEPHONE 501-372-2900  
FACSIMILE 501-372-0482

No.	Revision/Issue	Date	BY	APP'D

PROJECT TITLE  
REPAIR & RENOVATE MEDICAL CLINIC PH IV  
LITTLE ROCK AIR FORCE BASE  
JACKSONVILLE, ARKANSAS  
100% SUBMITTAL

DRAWN BY JCF	PROJECT NUMBER NKAK#06-8006-4
TECH REVIEWER CAG	SHEET P-202
DESIGNED BY CAG	
DATE JULY 14, 2008	
SCALE AS NOTED	

PLUMBING  
INSTALLATION PLAN AREA "B"

24  
OF