

For
no pen table
right
sheet

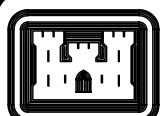
SHEET
REFERENCE
NUMBER:
Q8.22
SHEET X OF XX

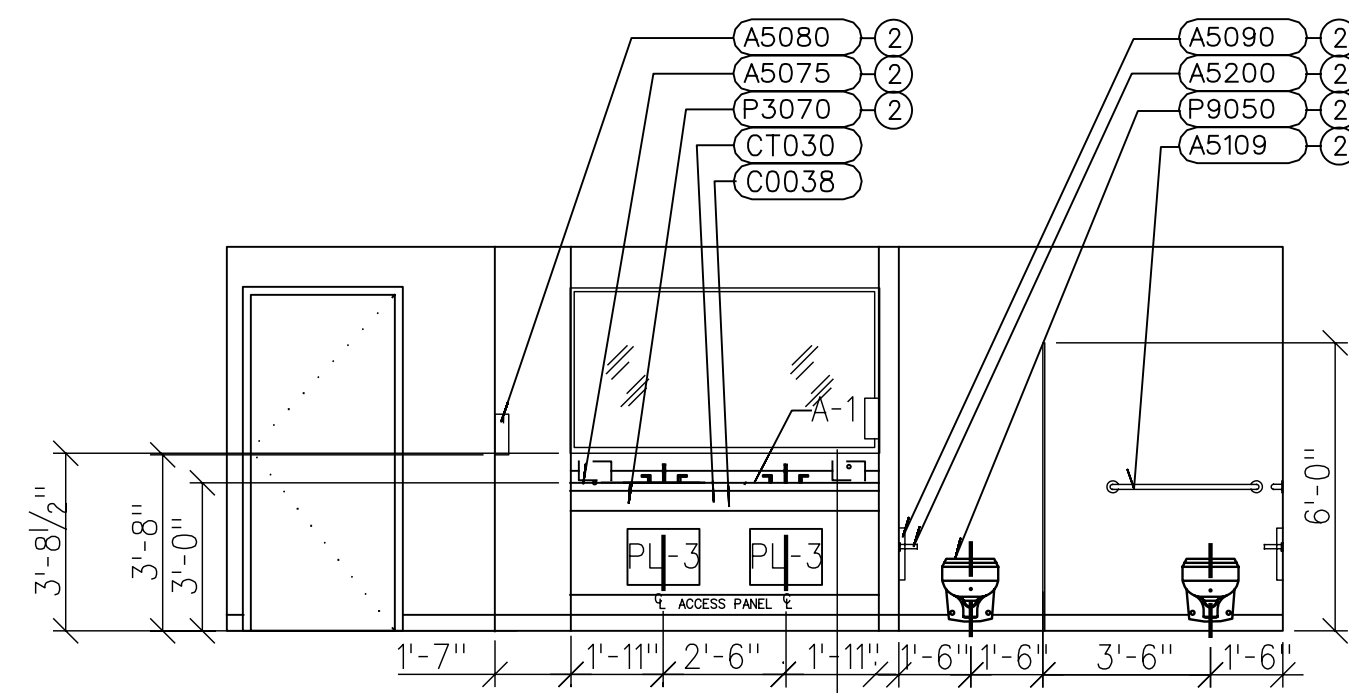
RENOVATE CLINIC
BUILDING 1090
LITTLE ROCK AFB, ARKANSAS
**TOILET ROOM ELEVATIONS
AS-BUILT**

U.S. ARMY ENGINEERING AND SUPPORT CENTER
CORPS OF ENGINEERS
HUNTSVILLE, ALABAMA
EARTHTECH
200 Broadview Ave. • Huntsville, AL 35894 • 205.840.1000

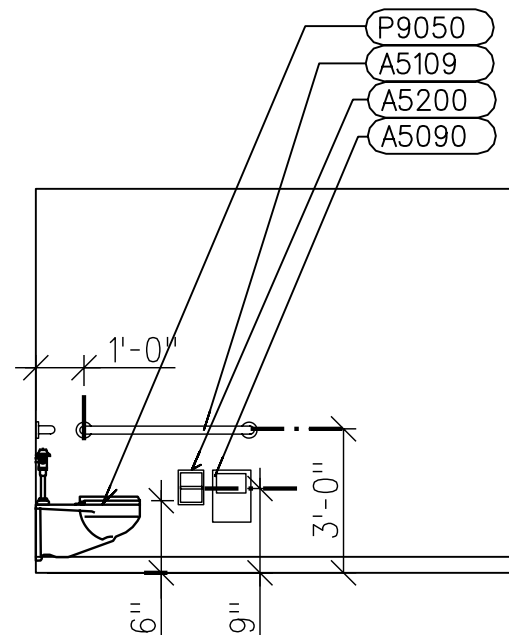
DESIGNED BY:	DATE:
DRAWN BY:	PROJECT NO.:
CHECKED BY:	DRAWING CODE:
REVIEWED BY:	SOLUTION NUMBER:

REVISIONS AS-BUILT	8/07/2005
ISSUED FOR BID	10/01/2003

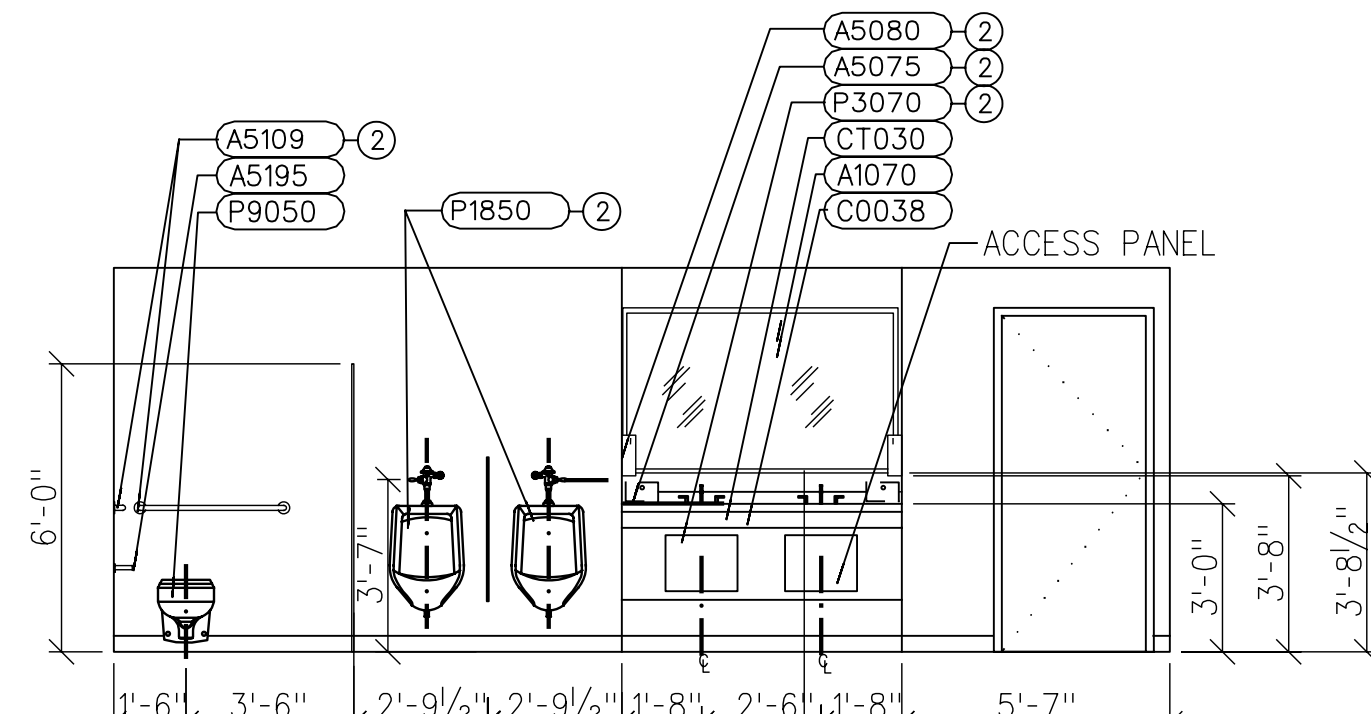

US Army Corps
of Engineers
Huntsville
Alabama



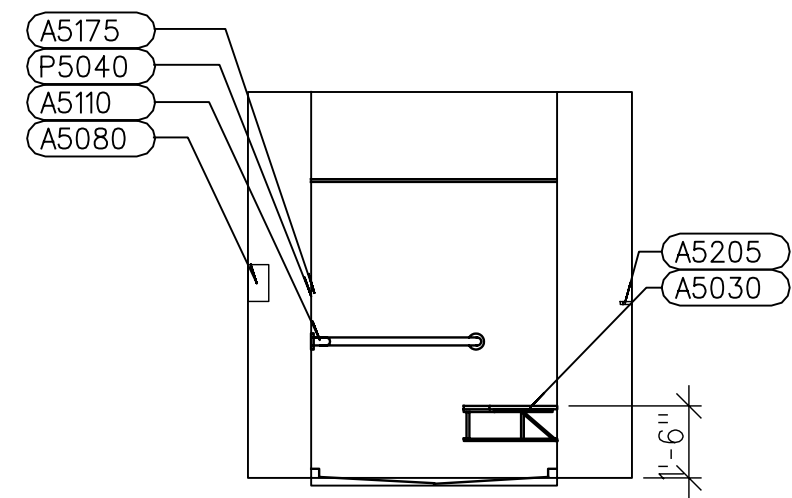
1 **PUBLIC TOILET F - A129**
SCALE: 1/4"=1'-0"



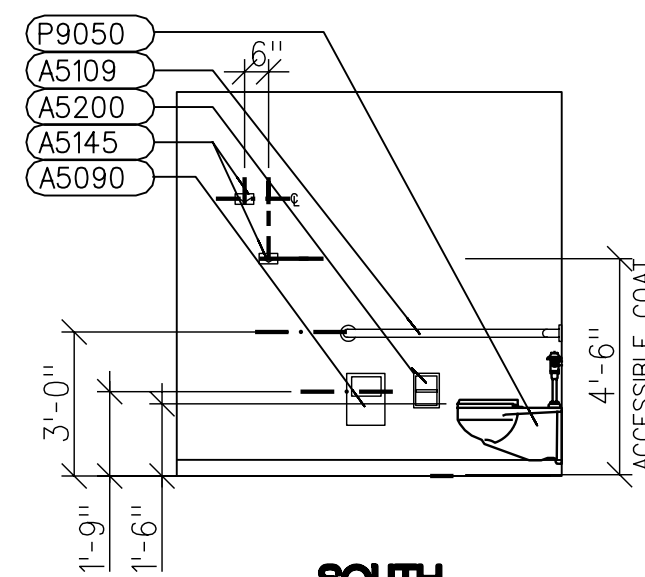
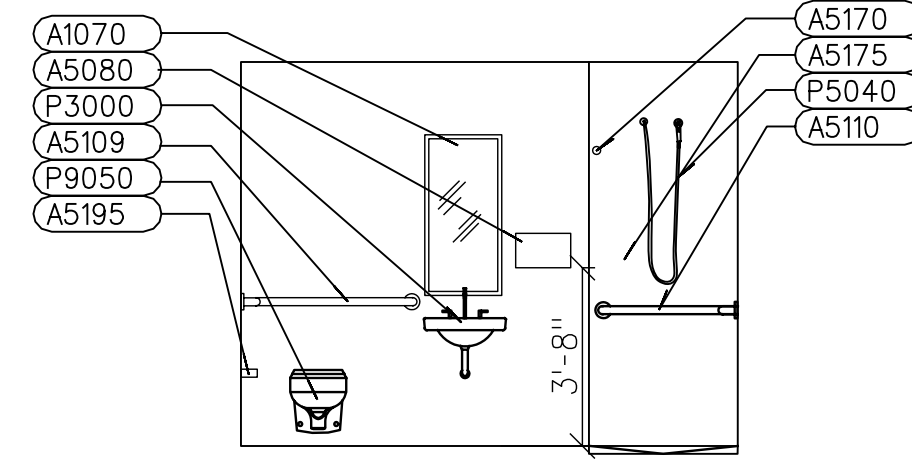
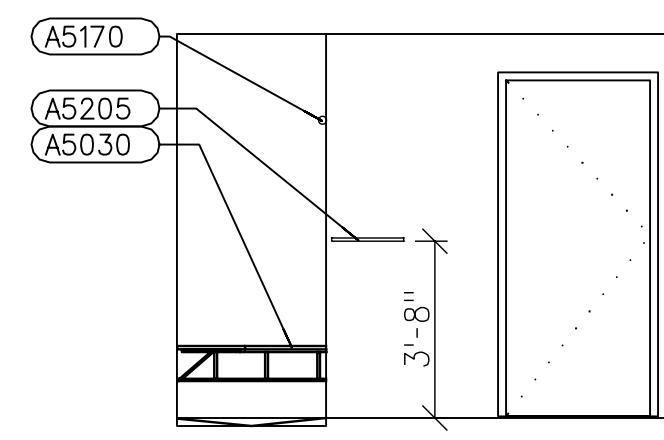
2 **PUBLIC TOILET F - A129**
SIM. A180, C120, E201, E200, E230A
SIM. MIRRORED C121, F154
SCALE: 1/4"=1'-0"



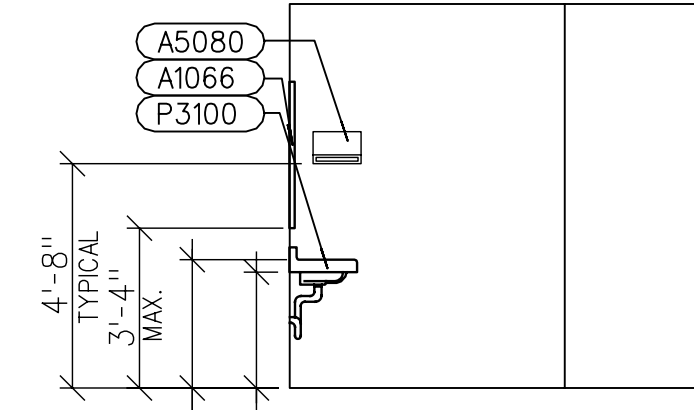
3 **PUBLIC TOILET M - A180**
SCALE: 1/4"=1'-0"



4 **STAFF SHOWER - E174**
SIM. E173
SCALE: 1/4"=1'-0"



5 **PUBLIC TOILET F - F155**
SCALE: 1/4"=1'-0"



5 **PUBLIC TOILET F - F155**
SCALE: 1/4"=1'-0"