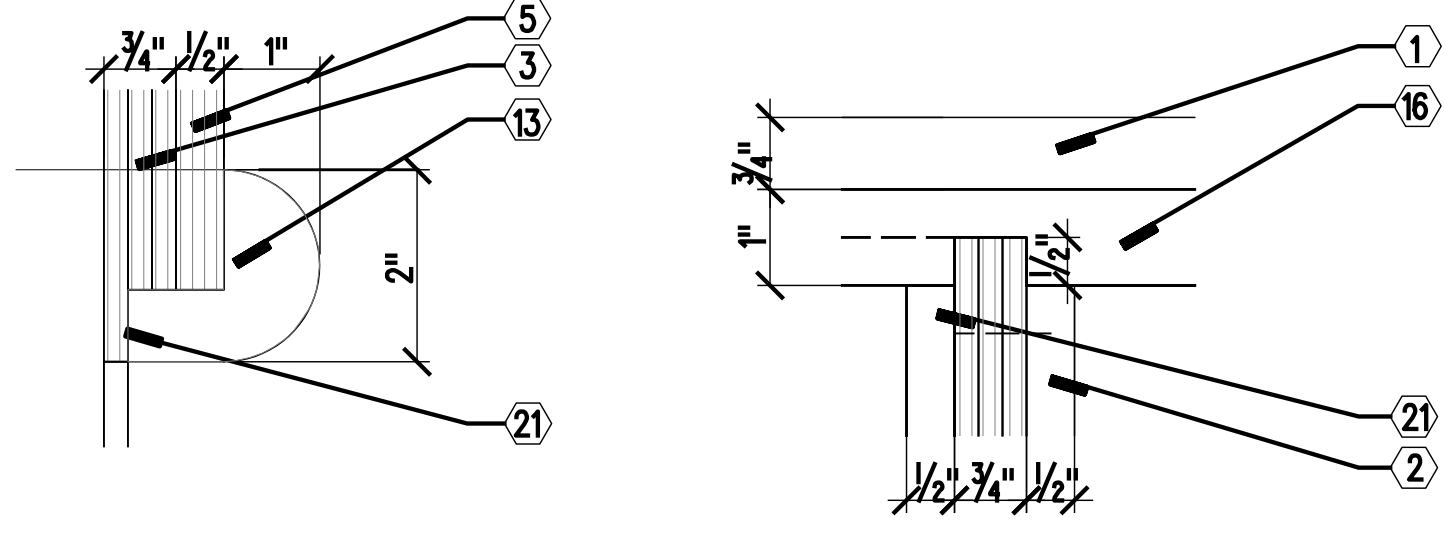


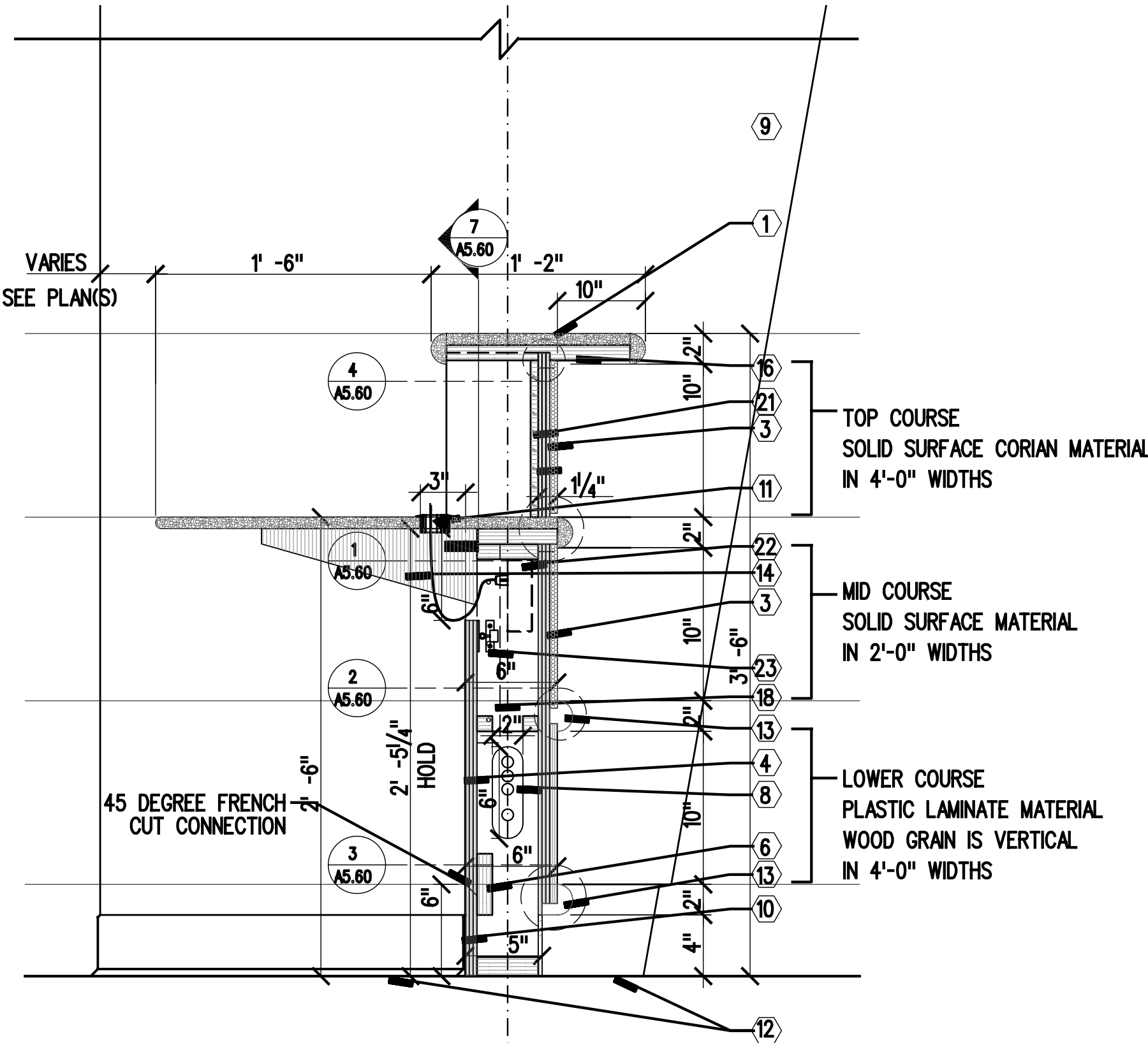
1 DETAIL SECTION
SCALE 6" = 1'-0"

2 DETAIL SECTION
SCALE 6" = 1'-0"



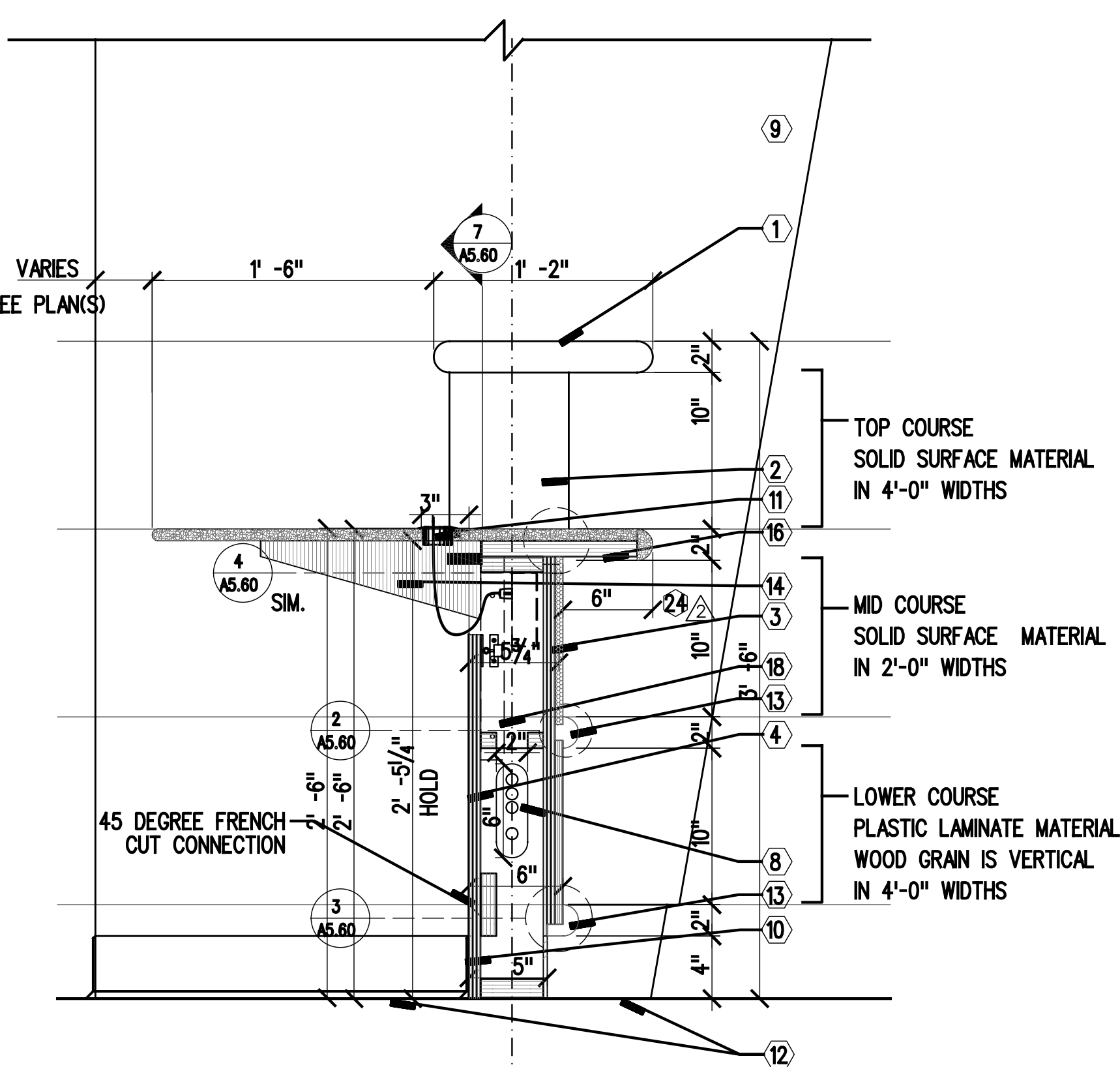
3 DETAIL SECTION
SCALE 6" = 1'-0"

4 DETAIL SECTION
SCALE 6" = 1'-0"



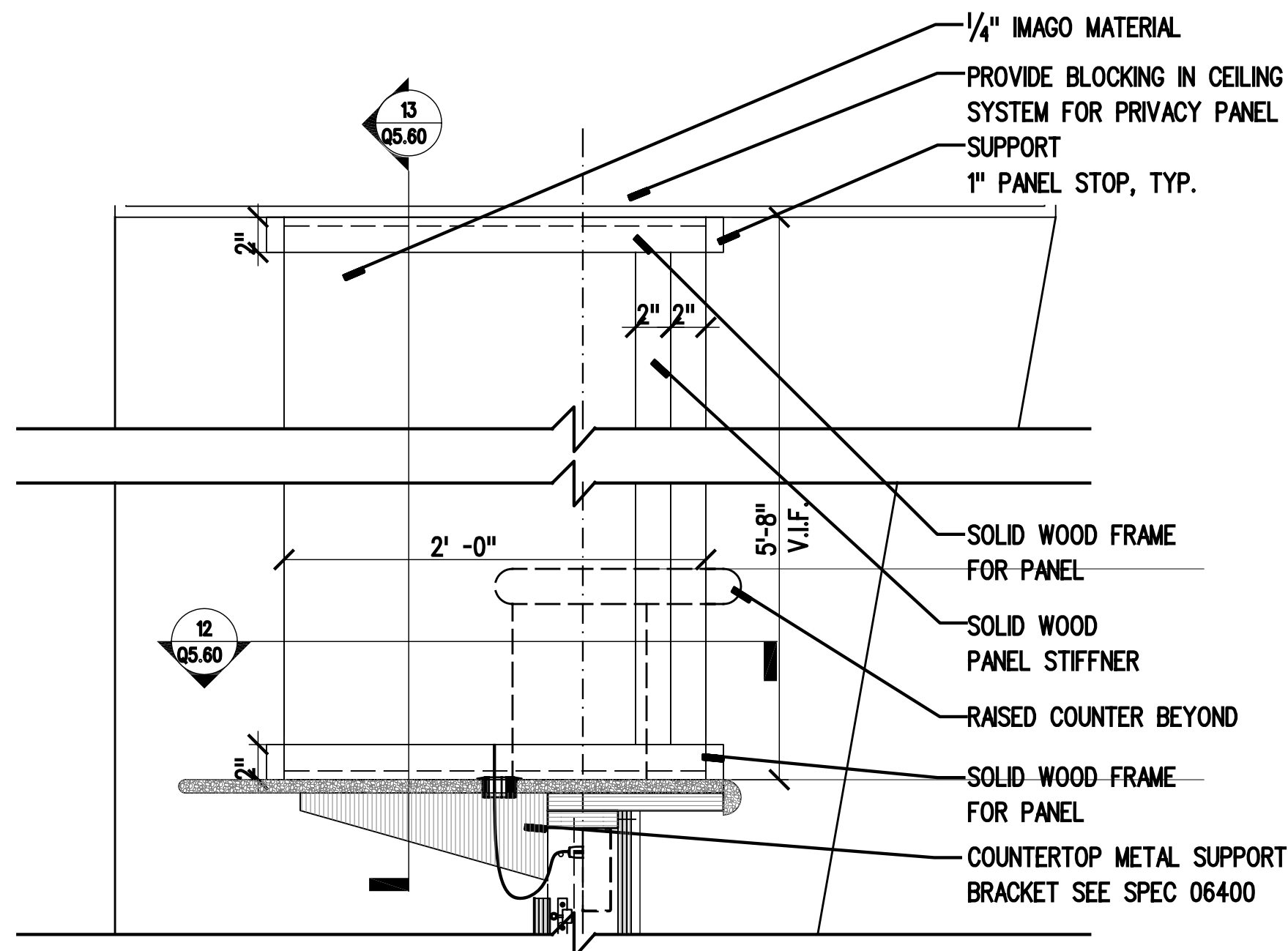
1. COORDINATE SPACING OF WORKSURFACE SUPPORTS WITH EQUIPMENT PLANS)
2. SHOW LOCATION OF ALL SUPPORTS IN MILLWORK SHOP DRAWINGS
3. SHOW LOCATION IN SHOP DRAWINGS OF ALL QUARTZ MATERIAL WORKSURFACE SEAMS
4. REFER TO A6.00 FOR PLAN LOCATION OF KNEE WALLS.

5 SECTION AT RECEPTION DESK
SCALE 1 1/2" = 1'-0"

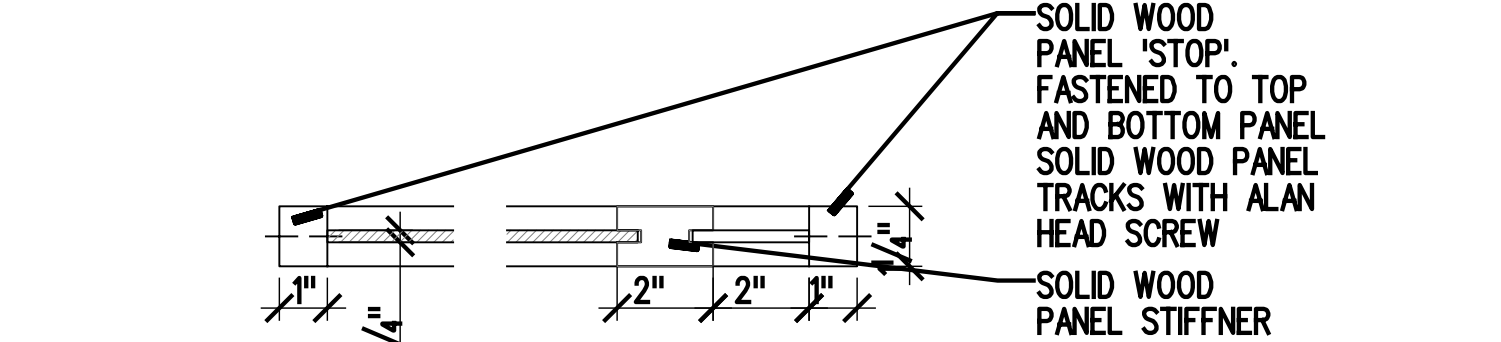


1. COORDINATE SPACING OF WORKSURFACE SUPPORTS WITH EQUIPMENT PLANS)
2. SHOW LOCATION OF ALL SUPPORTS IN MILLWORK SHOP DRAWINGS
3. SHOW LOCATION IN SHOP DRAWINGS OF ALL QUARTZ MATERIAL WORKSURFACE SEAMS
4. REFER TO A6.00 FOR PLAN LOCATION OF KNEE WALLS.

6 SECTION AT ACCESSIBLE WORKSURFACE
SCALE 1 1/2" = 1'-0"

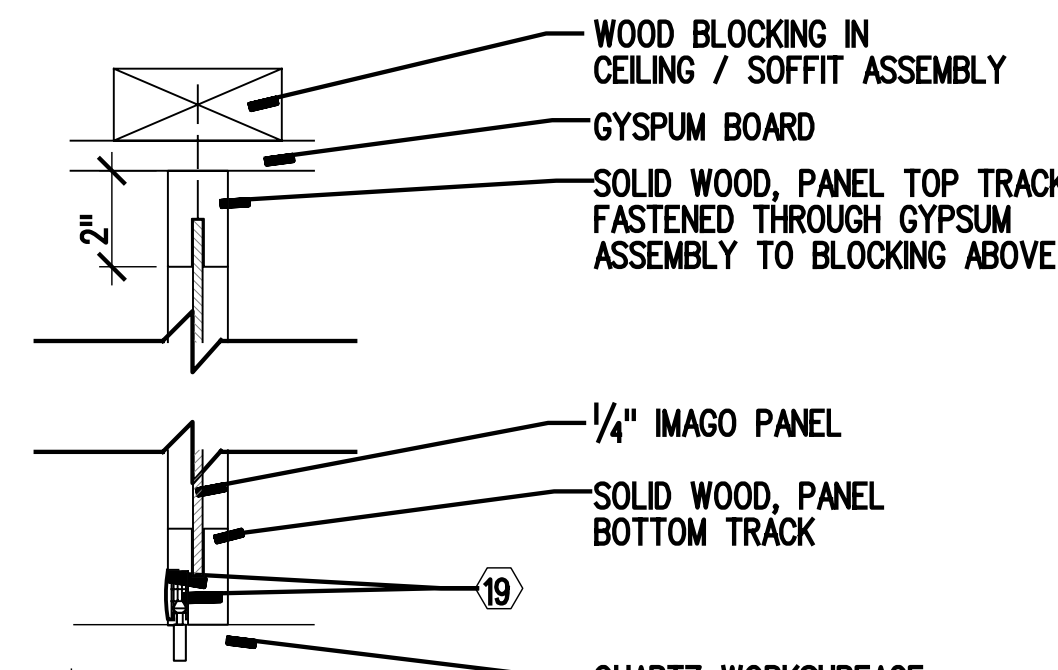


11 PARTIAL ELEVATION AT PRIVACY SCREEN
SCALE 1 1/2" = 1'-0"

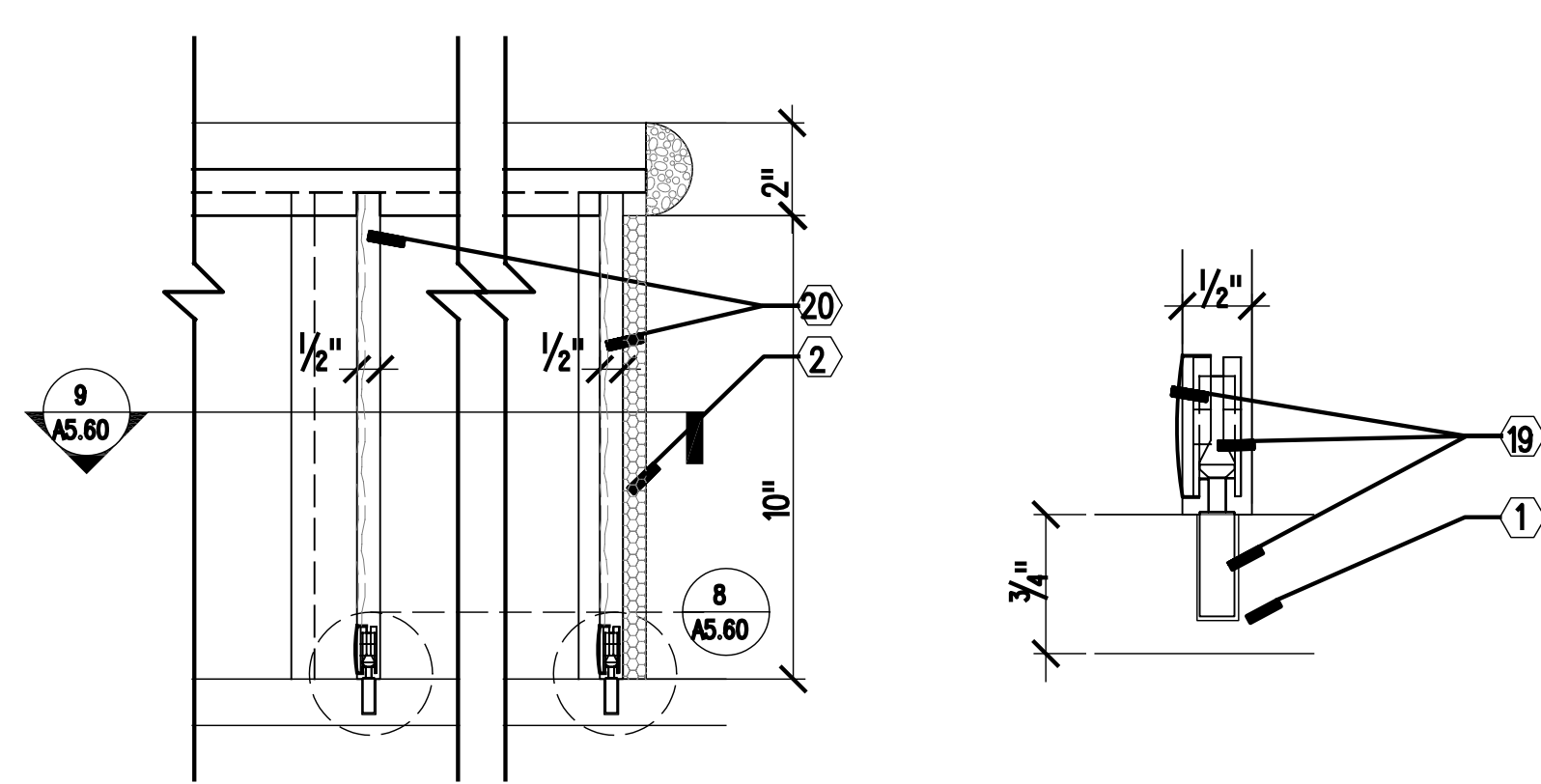


1. PRIVACY SCREENS TO BE MOUNTED OVER WORKSURFACE SUPPORT BRACKETS ONLY
2. SHOW LOCATION OF PRIVACY SCREEN IN SHOP DRAWINGS NOTING PROXIMITY TO SUPPORT BRACKETS

12 PARTIAL PLAN AT PRIVACY SCREEN
SCALE 6" = 1'-0"

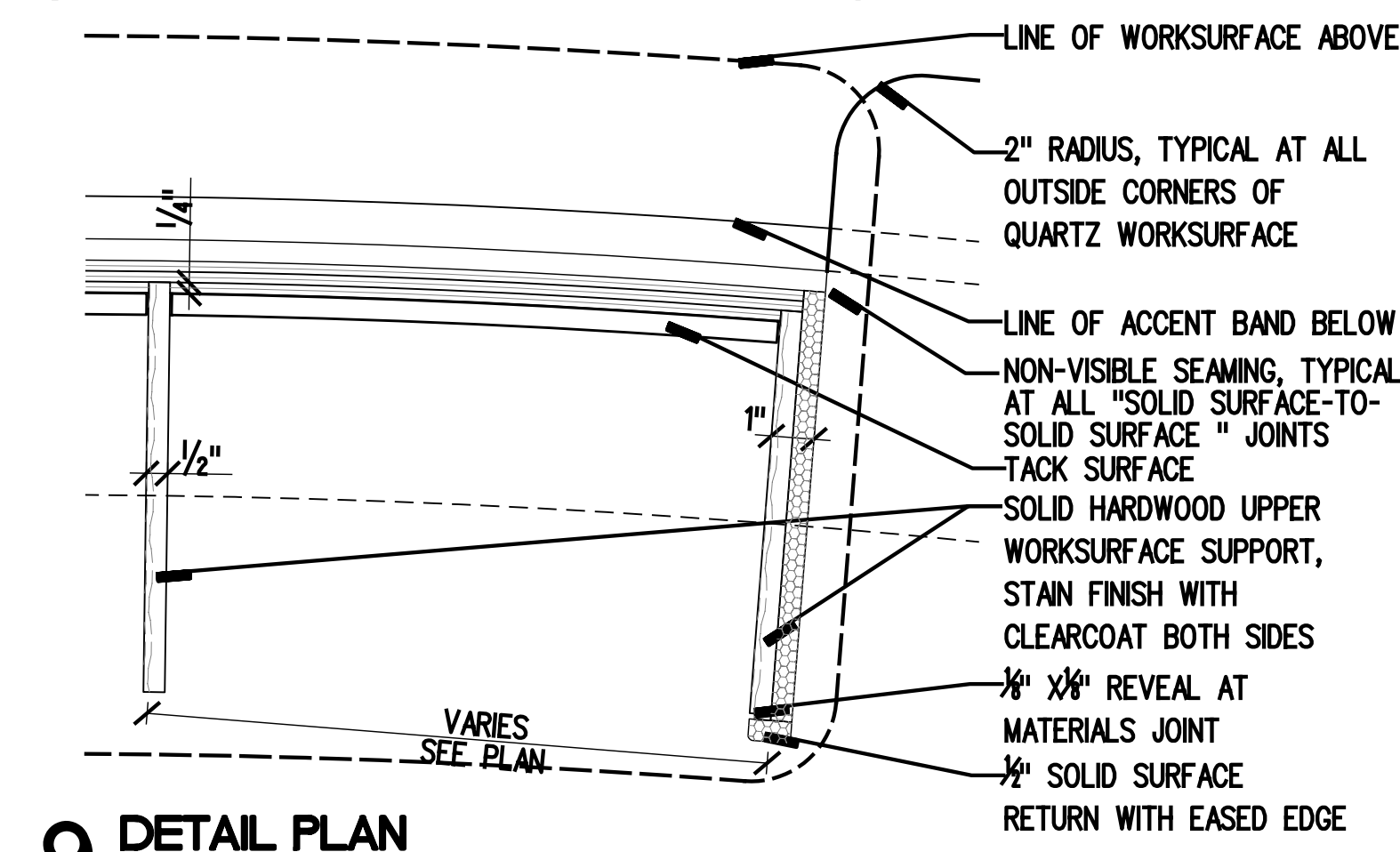


13 PARTIAL SECTION AT PRIVACY SCREEN
SCALE 6" = 1'-0"

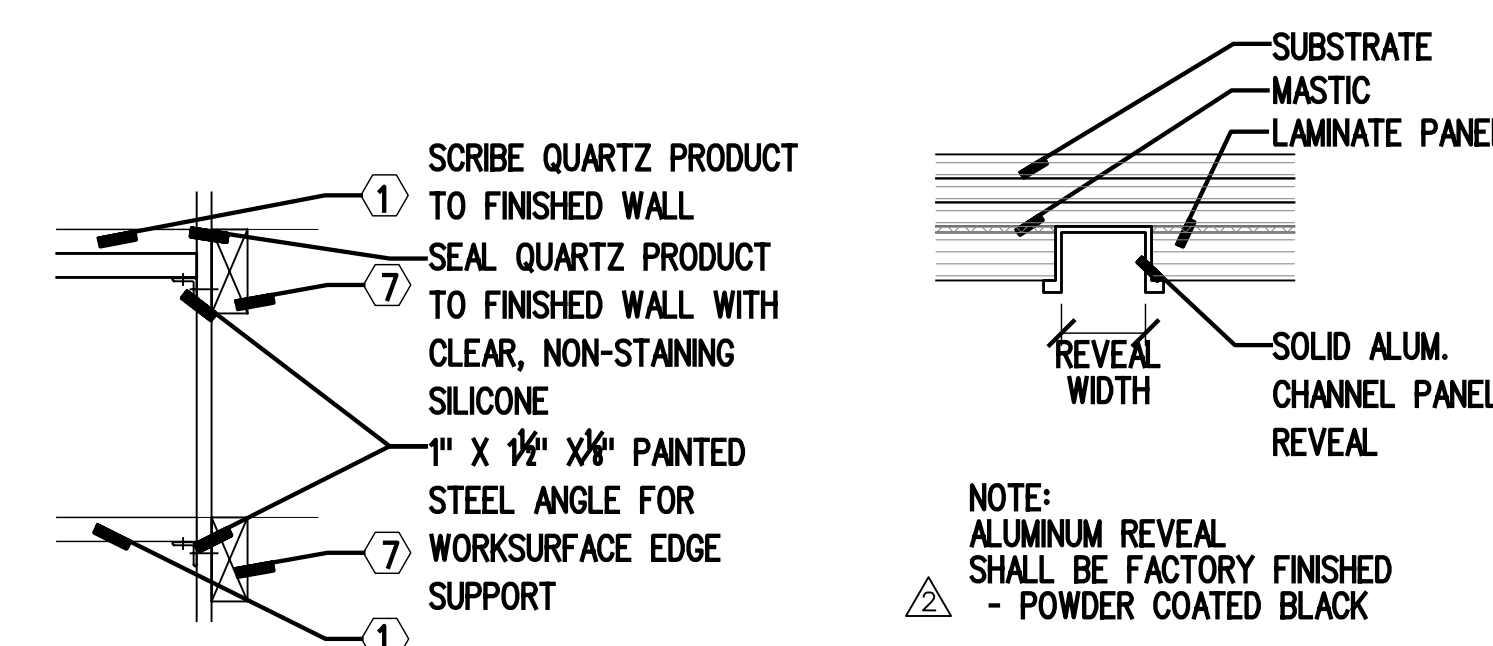


7 DETAIL SECTION
SCALE 6" = 1'-0"

8 DETAIL SECTION
SCALE NTS



9 DETAIL PLAN
SCALE 6" = 1'-0"



10 TYP. DETAIL SECTION AT WALLS
SCALE 1 1/2" = 1'-0"

10A REVEAL DETAIL
SCALE NTS

GENERAL NOTES

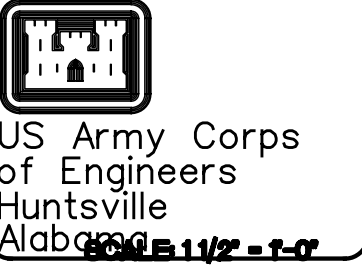
1. ALL PLYWOOD FRAMING TO BE FIRE TREATED
2. ALL PLYWOOD FRAMING TO BE SHOP FABRICATED
3. REVEAL CONDITIONS IN FINISHED PANELS WILL HAVE FINISHED SUBSTRATE, PAINTED BLACK, TYP. REFER TO MILLWORK ELEVATIONS FOR REVEAL LOCATIONS
4. 1" CUT PLYWOOD STUD SPACING TO BE NOT GREATER THAN 1'-0" IN PLAN
5. ALL STAIN COLOR TO BE APPROVED BY ARCHITECT BEFORE FABRICATION
6. ALL EXPOSED HARDWOOD TO BE STAINED WD-1, SEE FINISH LEGEND A4.10.

KEYED NOTES

1. 3/4" QUARTZ PRODUCT WORKSURFACE
2. 1/2" SOLID SURFACE PANEL, MASTIC APPLIED
3. 3 LAYERS OF 1/4" PLYWOOD LAMINATED TOGETHER TO FORM CURVATURE
4. 3 LAYERS OF 1/4" PLYWOOD LAMINATED TOGETHER TO FORM CURVATURE - FINISHED WITH MALAMINE. SECTIONS TO BE REMOVEABLE UNDER WORKSURFACE
5. PLASTIC LAMINATE PANEL
6. 1" CUT PLYWOOD STUDS WITH 1" INTERMEDIATE CUT PLYWOOD FRAMING PLYWOOD STUD SPACING NOT TO EXCEED 1'-0" IN PLAN
7. BLOCKING
8. WIRE / CONDUIT MANAGEMENT CUT-OUT
9. WALL COVERING ON GYPSUM ASSEMBLY BEYOND
10. BASE AS SCHEDULED
11. 2" DIA. GROMMET W/ CAPS, WHERE SHOWN IN PLAN
12. FINISHED FLOOR MATERIAL
13. QUARTZ MATERIAL ACCENT BAND, EPOXIED DIRECTLY TO SUBSTRATE
14. METAL SUPPORT BRACKET ANCHORED VERTICALLY TO STEEL STUD FRAMING MEMBER AT 3'-0" O.C., REFER TO SPEC SECTION 06400 FOR TYPE AND MANUFACTURER.
15. NOT USED
16. PLYWOOD SUBSTRATE
17. ELECTRICAL BOX, SEE ELECTRICAL PLAN
18. CAM AND BOLT CONNECTOR WITH PLASTIC TRIM CAP. BOLT END OF CONNECTOR EPOXIED INTO QUARTZ WORKSURFACE
19. 1/2" FINISHED HARDWOOD SUPPORT, TYP AT UPPER WORKSURFACE SUPPORTS
20. TACK SURFACE, SEE SPECIFICATIONS
21. JUNCTION BOX(S) TO POWER AND DATA
22. METAL ROLLER CATCH, SIM TO McMASTER CARR MODEL • 1790A17, DULL CHROME FINISH
23. 30" HIGH COUNTERS SHALL OVERHANG 10" WHERE THERE IS NOT A 42" HIGH TRANSACTION COUNTER IMMEDIATELY ADJACENT.

ABBREVIATED PATTERN KEY

- QUARTZ PRODUCT
- HARDWOOD
- SOLID SURFACE
- GYPSUM BOARD



DESIGNED BY	DATE	PROJECT NO.	DRAWN BY	CHECKED BY	REVIEWED BY	SOUGHTION NUMBER
SD-1 ADDENDUM #1	10/10/2003	61503				
REVISIONS	AS-BUILT	8/01/2005				
ISSUED FOR BIDDING	10/01/2003					

DESIGNED BY	DATE	PROJECT NO.	DRAWN BY	CHECKED BY	REVIEWED BY	SOUGHTION NUMBER
U.S. ARMY ENGINEERING AND SUPPORT CENTER	10/10/2003	61503				
CORPS OF ENGINEERS						
HUNTSVILLE, ALABAMA						
EARTH TECH						
200 South Main St., Suite 1000, Huntsville, AL 35894						

RENOVATE CLINIC
BUILDING 1090
LITTLE ROCK AFB, ARKANSAS
**RECEPTION COUNTER
MILLWORK SECTIONS
AS-BUILT**

SHEET
REFERENCE
NUMBER:
Q5.60
SHEET X OF XX