

DATE	APPROVED	SYMBOL	AMENDMENT DESCRIPTION
10/10/2003			SD-1 ADDENDUM #1
8/01/2005			REVISIONS AS-BUILT
10/01/2003			ISSUED FOR BID

DESIGNED BY:	DATE:	10/10/2003
DRAWN BY:	PROJECT NO.:	01503
CHECKED BY:	DRAWING CODE:	
REVIEWED BY:	SOLUTION NUMBER:	

U.S. ARMY ENGINEERING AND SUPPORT CENTER  
CORPS OF ENGINEERS  
HUNTSVILLE, ALABAMA

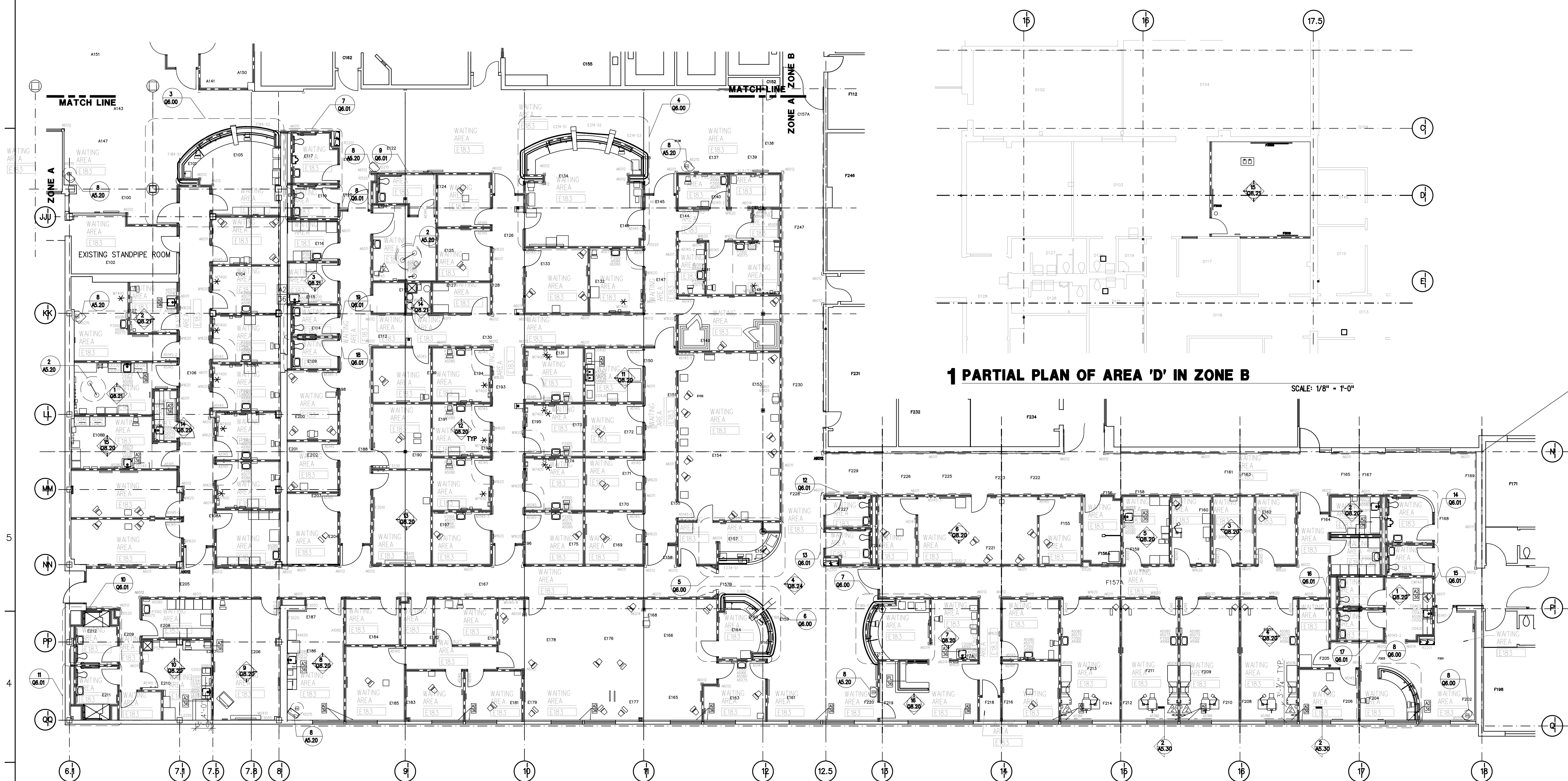
EARTHTECH  
205 Shepherd Ave., Suite 100, Huntsville, AL 35894-0001

RENOVATE CLINIC  
BUILDING 1090  
LITTLE ROCK AFB, ARKANSAS

**EQUIPMENT PLAN**

**ZONE A AS-BUILT**

SHEET  
REFERENCE  
NUMBER:  
**Q1.11**  
SHEET 4 OF 4



**1 PARTIAL PLAN OF AREA 'D' IN ZONE B**

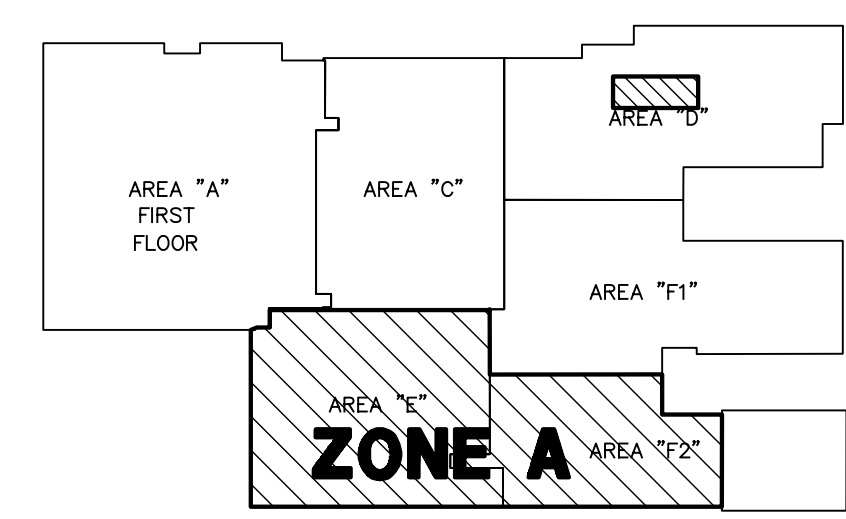
SCALE: 1/8" = 1'-0"

**GENERAL EQUIPMENT PLAN NOTES:**

- EQUIPMENT THAT IS PART OF THIS CONTRACT IS SHOWN REPRESENTED BY A SOLID NUMBER AND/OR AN EQUIPMENT NUMBER. SCREENED INFORMATION IS FOR CONTEXT AND REFERENCE ONLY.
- ALL COUNTERTOPS NOT TERMINATING AT A WALL SHALL HAVE A 2" OVERLAP AND A 2" RADIUS ON ANY EXPOSED CORNER. SEE SHEET Q6.02.
- ALL SINK AREAS SHALL HAVE A SOLID SURFACE (A) COUNTER TOP WITH INTEGRAL BACK SPLASHES, SIDE SPLASHES WHERE COUNTERTOP MEETS A WALL SURFACE, & INTEGRAL SINK BOWL.
- ALL INTEGRAL SOLID SURFACE SINKS SHALL BE A-2, UNLESS NOTED OTHERWISE.
- SEE SHEET Q0.00 FOR STANDARD MOUNTING HEIGHTS OF EQUIPMENT ITEMS.
- SEE SHEET Q4.00 AND Q4.01 FOR EQUIPMENT SCHEDULE.
- SEE DETAIL 8 ON SHEET A5.12 FOR BUMPER GUARD DETAIL AND DETAILS 18,19 AND 20 ON SHEET A5.11 FOR CORNER GUARD DETAILS. FOR BOTH SEE STANDARD MOUNTING HEIGHTS SHEET Q0.00.
- CIRCLED AREAS ARE ENLARGED PLANS. REFER TO SHEET LISTED.
- FIELD VERIFY ALL DIMENSIONS AND REPORT ANY DISCREPANCIES TO THE OWNER'S REPRESENTATIVE PRIOR TO INSTALLATION OF ANY EQUIPMENT.
- ALL CUBICLE CURTAIN TRACKS MUST CLEAR DOOR SWINGS BY A MINIMUM OF 3". SEE DIVISION A2 CEILING PLANS FOR LOCATION OF TRACKS.
- SEE DIVISIONS M & E FOR MECHANICAL AND ELECTRICAL REQUIREMENTS FOR ALL EQUIPMENT.
- ALL COUNTER TOPS TO BE 2 1/2" DEEP UNLESS NOTED OTHERWISE. SEE COUNTERTOP PLANS Q6.02.
- REFER TO FINISH LEGEND FOR CLARIFICATIONS OF MILLWORK MATERIAL & COLOR INDICATORS.
- COORDINATE CEILING MOUNTED EQUIPMENT WITH REFLECTED CEILING PLANS A2.11 AND A2.12.
- COORDINATE EQUIPMENT WITH ELECTRICAL, MECHANICAL AND PLUMBING DIVISIONS AS APPLICABLE.
- ALL 90 DEGREE CORNER GUARDS SHOULD READ A6012. A013 SURFACE MOUNTED CORNER GUARDS WILL BE USED IN AREAS WHERE THE USE OF A6012 IS IMPRACTICAL.

**EQUIPMENT KEY**

- DARKENED CORNER(S) INDICATE WHICH ELEVATIONS ARE ACTUALLY DRAWN. ELEVATION NUMBER SHEET ELEVATION IS DRAWN ON
- EQUIPMENT NUMBER  
NUMBER REQUIRED
- SOLID LINE INDICATES EQUIPMENT FURNISHED & INSTALLED BY CONTRACTOR. SEE EQUIPMENT SCHEDULE
- WALL BUMPER A6011  
CURVED SIDE FOLDING  
GATE CLOSURE  
CEILING MOUNTED LIGHT M7405
- CORNER GUARD  
A6012 OR A6013 OR A6014  
USE A6012 WHEREVER POSSIBLE. REFER TO DETAILS 18 AND 19 ON A5.11.
- TELEVISION BRACKET, CEILING MOUNTED A5215  
CURTAIN TRACK A5180. REFER TO CEILING DETAIL #3 ON SHEET A5.20  
BLACK-OUT SHADE A5186  
REFER TO SPEC 12492
- UPPER CABINET  
BASE CABINET
- COUNTER TOP MATERIALS
- A --SOLID SURFACE  
PL --PLASTIC LAMINATE  
Q2 --ENGINEERED STONE  
SS --STAINLESS STEEL
- COUNTER HEIGHT IN INCHES



KEY PLAN  
N.T.S.  
SCALE