

## WALL PROTECTION LEGEND

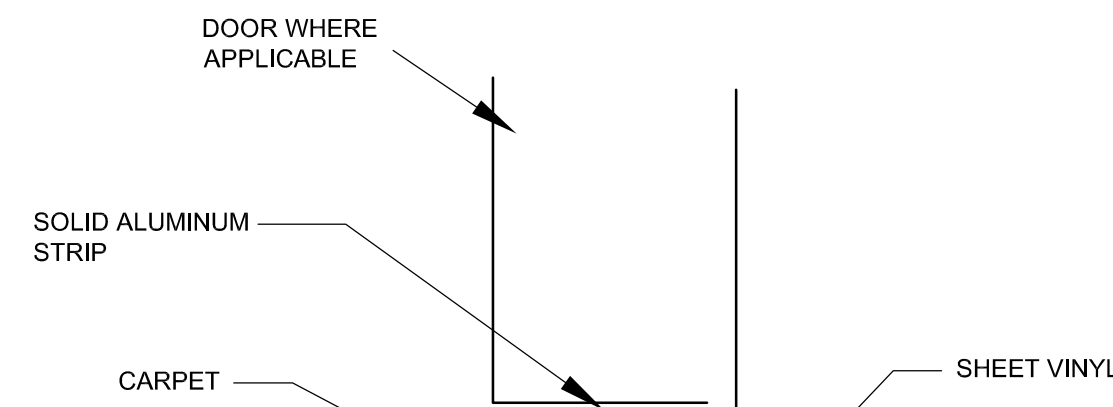
REFER TO A-601 FOR ALL SPECIFICATIONS

**WALL GUARD**  
MATCH EXISTING WIDTH.  
CONTRACTOR TO FIELD VERIFY  
EXISTING CRASH RAIL AND  
MATCH HEIGHT.

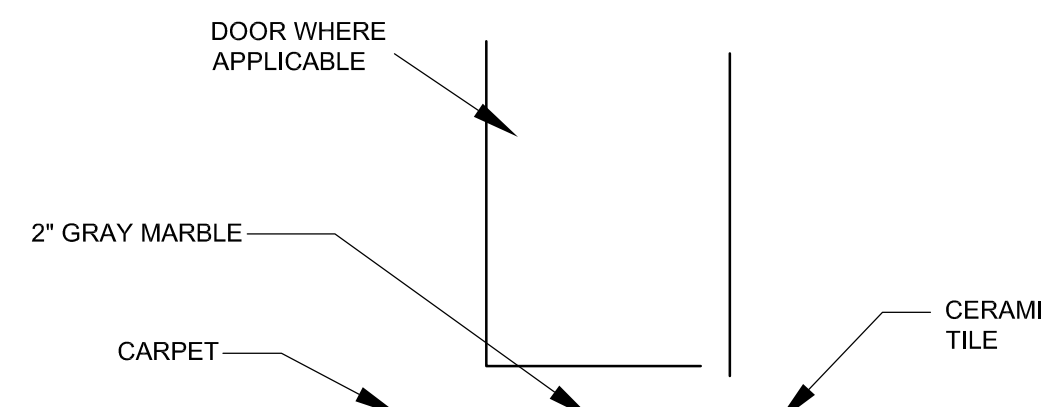
**HAND RAIL**

**PARTITION END CAP**  
RECESSED MOUNT

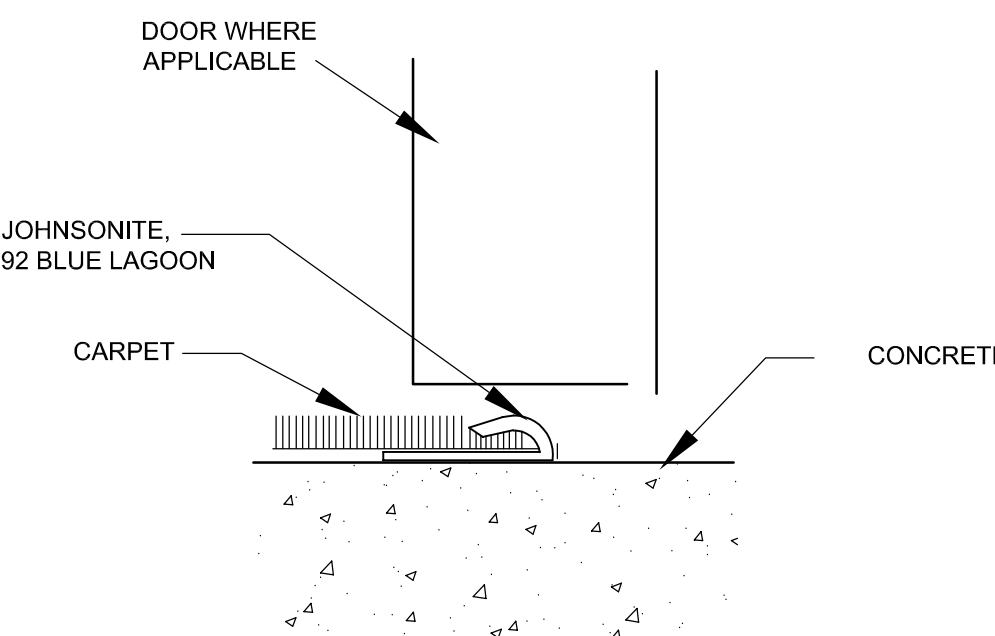
**CORNER GUARD**  
RECESSED MOUNT



7  
I-101  
CARPET TO SHEET VINYL  
NTS

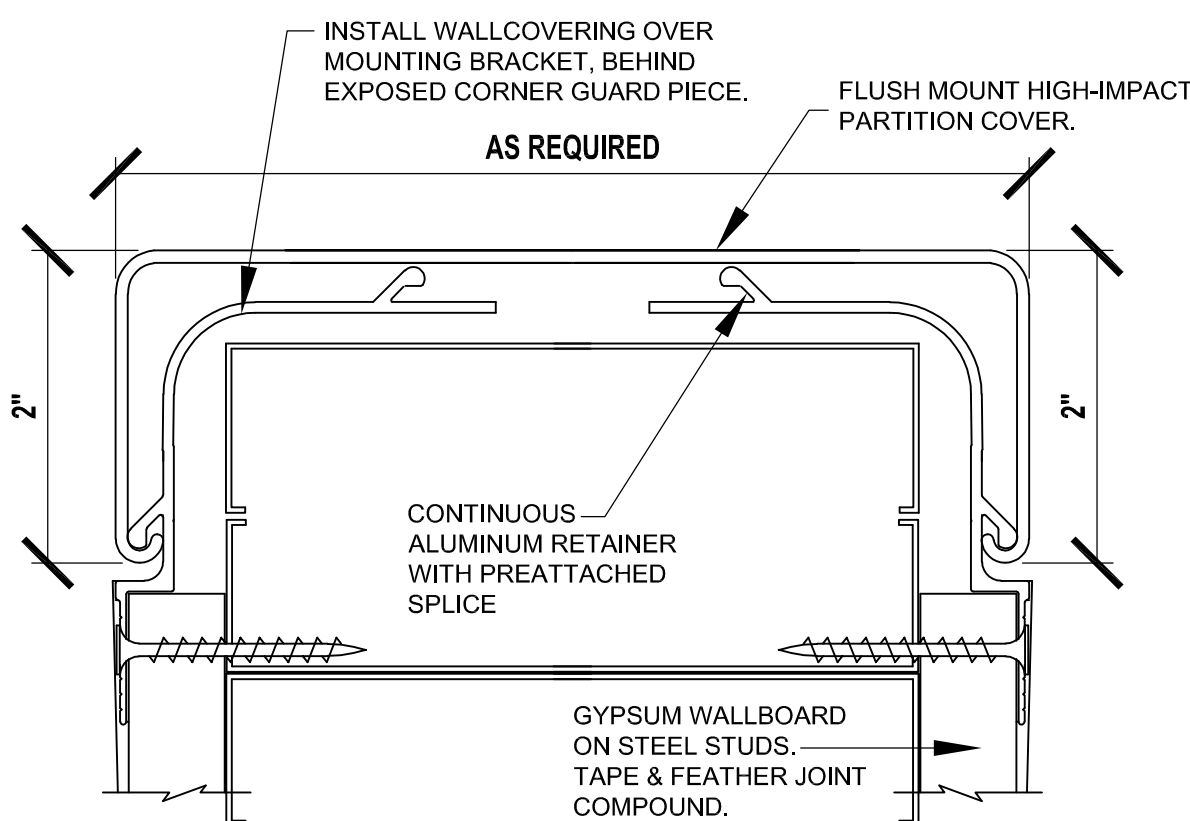
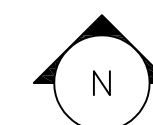


6  
I-101  
CARPET TO CERAMIC TILE  
NTS

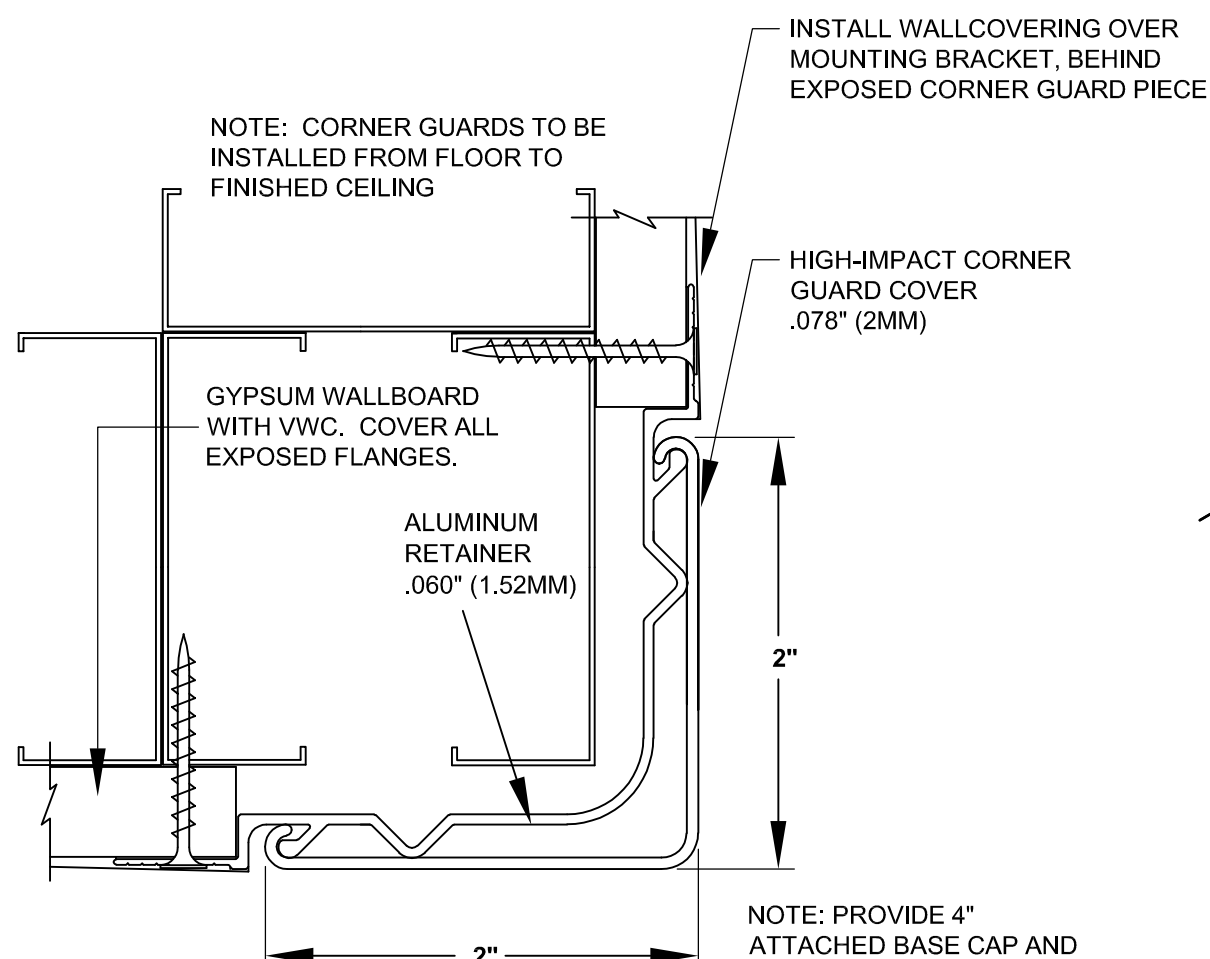


5  
I-101  
CARPET TO CONCRETE  
NTS

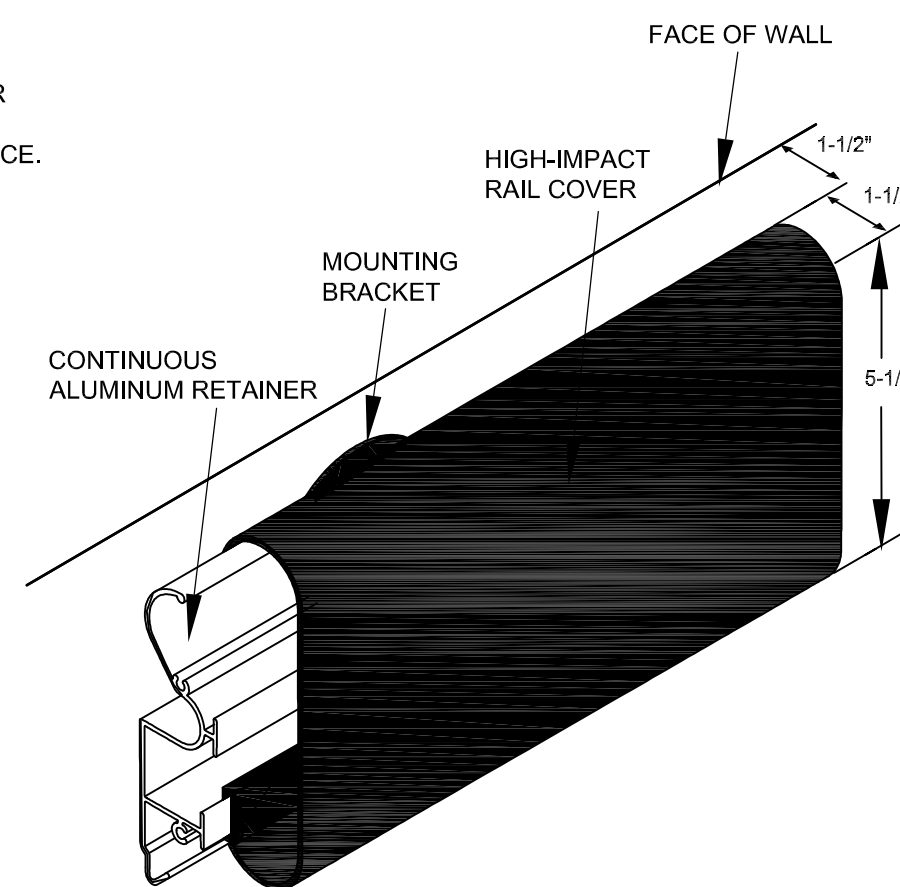
1 WALL PROTECTION PLAN - AREA "A" - RE-FILL PHARMACY, LOGISTICS, HOUSEKEEPING  
1/8"=1'-0"



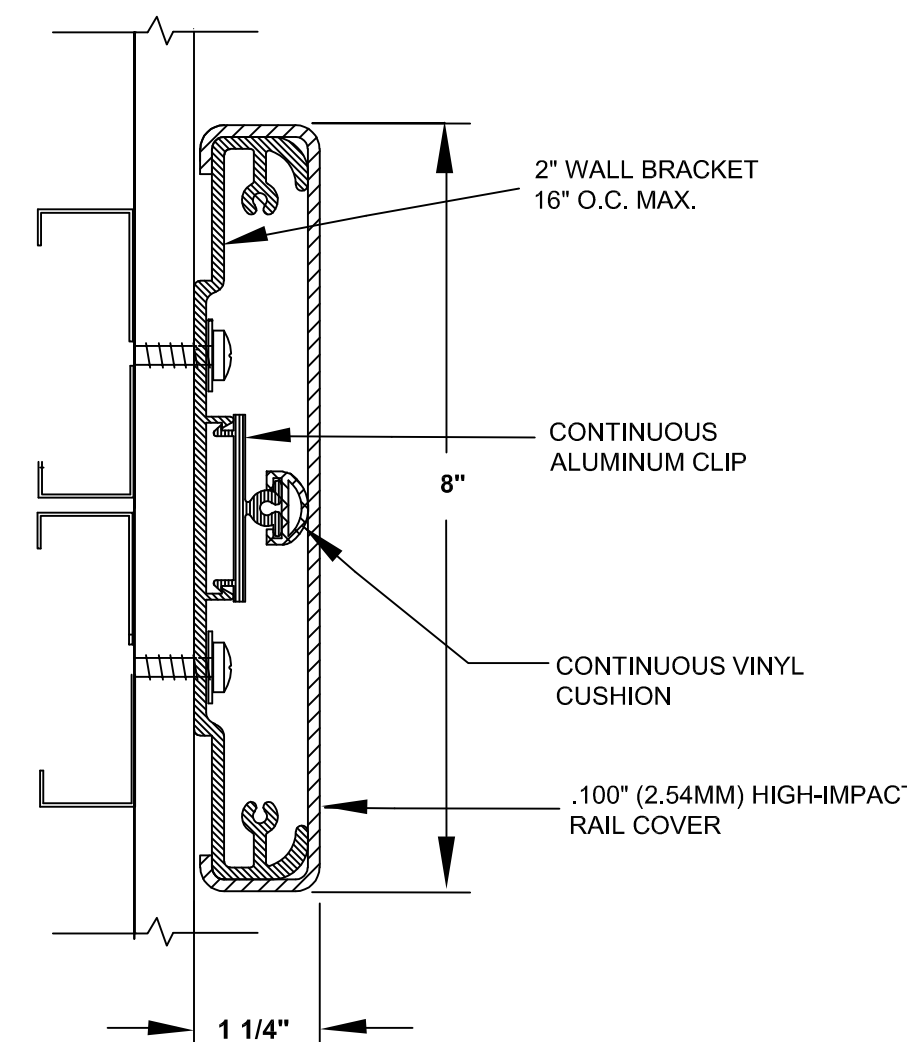
1  
I-101  
FLUSH MOUNT END WALL PROTECTOR  
NTS



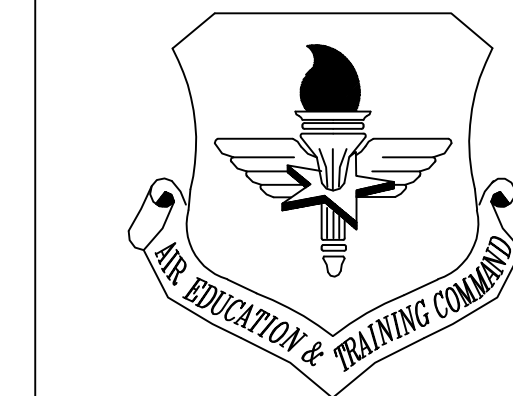
2  
I-101  
FLUSH MOUNT CORNER GUARD  
NTS



3  
I-101  
HANDRAIL  
NTS



4  
I-101  
CRASH RAIL WALL GUARD  
NTS



LITTLE ROCK A.F.B.  
ARKANSAS

**GARVER ENGINEERS**

1010 BATTERY STREET  
LITTLE ROCK, ARKANSAS 72202  
www.garverengineers.com  
(501) 376-3633

**CROMWELL**  
ARCHITECTS ENGINEERS

101 SOUTH SPRING ST  
LITTLE ROCK AR 72201  
TELEPHONE 501-372-2900  
FACSIMILE 501-372-0482

PROJECT TITLE REPAIR & RENOVATE MEDICAL CLINIC PH IV LITTLE ROCK AIR FORCE BASE JACKSONVILLE, ARKANSAS 100% SUBMITTAL		SHEET TITLE WALL PROTECTION PLAN- AREA "A"		RE-FILL PHARMACY, LOGISTICS, HOUSEKEEPING
DRAWN BY M. DEES		LEAD DESIGNER K. TAYLOR		
TECH. REVIEWER PJL		PROJECT NUMBER NKAK#06-8006-4		
DESIGNED BY M. DEES		SHEET I-101		
DATE JULY 1, 2008				
SCALE AS NOTED		15 of 50		