

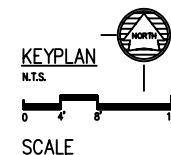
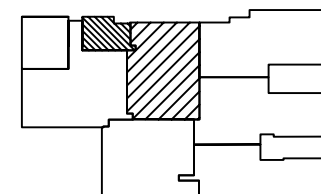


1. REMOVE ALL CARPET, FLOOR TILE, MASTIC, LINOLEUM, FLOORING GOODS, AND FLOOR LEVELING MATERIAL. DISPOSE AS ASBESTOS CONTAINING MATERIAL.
2. REMOVE ALL DUCT INSULATION SEALANT THAT WILL BE DISTURBED BY THE WORK. DISPOSE AS ASBESTOS CONTAINING MATERIAL. REPAIR/REPLACE INSULATION.
3. REMOVE ALL PIPE INSULATION THAT WILL BE DISTURBED BY THE WORK AND DISPOSE AS ASBESTOS CONTAINING MATERIAL. REPAIR/REPLACE INSULATION.
4. SEE TECHNICAL SPECIFICATIONS SECTION 13281, ASBESTOS ABATEMENT.

[illegible]REPAIR MEDICAL CENTER PH 3
LITTLE ROCK AFB, ARKANSAS

ASBESTOS ABATEMENT PLAN

DRAWN BY RJR	LEAD DESIGNER DS
TECH REVIEWER DS	PROJECT NUMBER NKAK 06-8001
DESIGNED BY DS	SHEET HMO.11
DATE 8-11-06	
SCALE 1/8"=1'-0"	3 of 37



1 ASBESTOS ABATEMENT PLAN