

KEYED NOTES

- 1 EXISTING SPRINKLER DRAIN TO REMAIN.

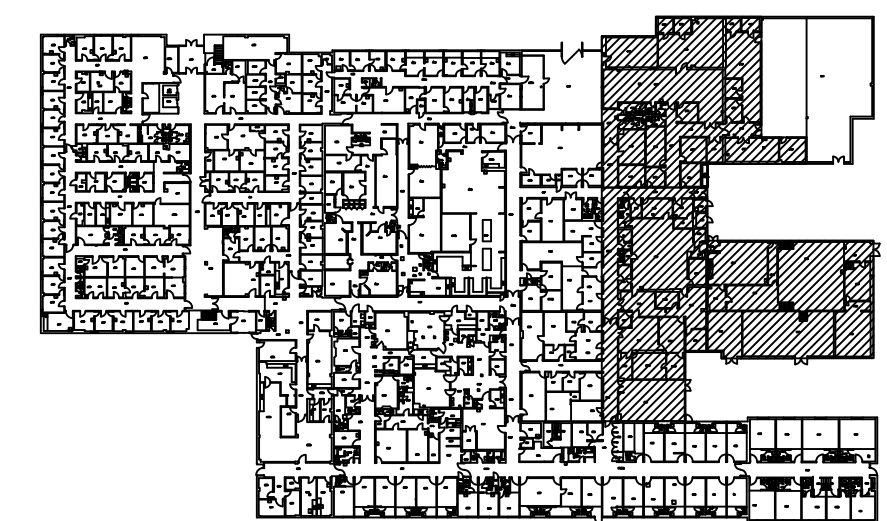
GENERAL NOTES

1. MODIFY EXISTING WET PIPE SPRINKLER SYSTEM AS INDICATED TO PROVIDE COVERAGE TO RENOVATED SPACES.
2. FLEX CONNECTORS ARE NOT ALLOWED.
3. REPLACE ALL EXISTING SPRINKLER HEADS (WHETHER OR NOT THE HEAD LOCATION IS ACCEPTABLE FOR NEW WORK).
4. SPRINKLER HEADS SHALL BE CENTERED IN CEILING TILES.
5. THE CONTRACTOR SHALL NOTIFY THE OWNER ONE WEEK IN ADVANCE PRIOR TO SPRINKLER SYSTEM SHUTDOWN. THE OWNER WILL PROVIDE INTERIM LIFE SAFETY MEASURES DURING SHUTDOWN.

1 FIRE PROTECTION DEMOLITION PLAN AREA "A"  
F-101 SCALE: 1/8" = 1'-0"

SPRINKLER SYMBOL LEGEND

- ⊙ EXISTING SPRINKLER HEAD TO REMAIN  
⊗ EXISTING SPRINKLER HEAD TO BE REMOVED



KEY PLAN



LITTLE ROCK A.F.B.  
ARKANSAS

GARVER ENGINEERS

1010 BATTERY STREET  
LITTLE ROCK, ARKANSAS 72202  
www.garverengineers.com  
(501) 376-3633

CROMWELL

ARCHITECTS ENGINEERS

101 SOUTH SPRING ST  
LITTLE ROCK AR 72201  
TELEPHONE 501-372-2900  
FACSIMILE 501-372-0482

No.	Revision/Issue	Date	BY	APP'D

PROJECT TITLE REPAIR & RENOVATE MEDICAL CLINIC PH IV LITTLE ROCK AIR FORCE BASE JACKSONVILLE, ARKANSAS 100% SUBMITTAL		SHEET TITLE FIRE PROTECTION DEMOLITION PLAN AREA "A"	
DRAWN BY JCF	LEAD DESIGNER JCF	PROJECT NUMBER NKAK#06-8006-4	SHEET F-101
TECH REVIEWER JCF	DESIGNED BY JCF	DATE JULY 1, 2008	SCALE AS NOTED
DATE JULY 1, 2008	SCALE AS NOTED	17	OF