

REVISIONS	DATE	DESCRIPTION	BY	APP'D
1	8/07/2005	REVISIONS AS-BUILT		
2	9/27/2004	SD-5 - CEILING AND ROOM CHANGES		
3	10/31/2003	ISSUED FOR FINAL WORK PLAN		
4	10/14/2003	ADDITIONAL 1		
5	04/17/2003	ISSUED FOR CONSTRUCTION		

DESIGNED BY: DATE: 08/04/2003	PROJECT NO: 6503
DRAWN BY: C.S.	CHECKED BY: R.W.H.
REVIEWED BY: SQUADRON NUMBER:	

U.S. ARMY ENGINEERING AND SUPPORT CENTER CORPS OF ENGINEERS HUNTSVILLE, ALABAMA	EARTH TECH SD-5 SHEET 01
---	--------------------------------

RENOVATE CLINIC BUILDING 1090 LITTLE ROCK AFB, ARKANSAS	LEVEL ONE ZONE A SYSTEMS PLAN AS-BUILT
---	--

SHEET REFERENCE NUMBER: E1.31 SHEET X OF XX
--



2 ZONE A PLAN

KEY NOTES AND GENERAL NOTES

- EXISTING FIRE ALARM CONTROL PANEL AND EQUIPMENT THIS ROOM TO REMAIN
- FLOW AND TAMPER SWITCH DEVICES TO REMAIN. CONTRACTOR SHALL TEMPORARY CONNECT AND FINAL CONNECT EXISTING FLOW AND TRANSFER SWITCHES TO ALARM PANEL DURING CONSTRUCTION. CHANGE OVER SHALL BE COORDINATED WITH FACILITIES MANAGER AND FIRE DEPARTMENT.
- ANY FIRE ALARM SYSTEM EQUIPMENT PERMANENTLY REMOVED SHALL BE RETURNED TO THE 314th CES/CEIO (ALARM SYSTEM SHOP ON BASE). THEY MAY REUSE EXISTING DETECTORS AS NEEDED BASED UPON YOUR NEW LAYOUT BUT IN NO CASE ARE THEY TO REUSE EXISTING APPLIANCES.
- EAST BUILDING AREA OF 'F' SHALL BE IN OPERATION DURING CONSTRUCTION. CONTRACTOR SHALL TEMPORARY CONNECT AND FINAL CONNECT EXISTING AREA DEVICES. CHANGE OVER SHALL BE COORDINATED WITH FACILITIES MANAGER AND FIRE DEPARTMENT. DEVICES NOT USED SHALL BE RETURNED TO CEO ALARM SHOP WITH INVENTORY LIST.
- CONNECT UP TO PENTHOUSE 1 FOR DEVICES. SEE SHEET E1.23 FOR CONTINUATION. DEVICE POINTS 2-48, 2-44, 2-50, 2-51, AND 2-52.
- FIRE ALARM INDICATING DEVICES SHALL BE CONNECTED TO FACP ALARM OUTPUT BOARDS. CONTRACTOR TO INSTALL IN CONDUIT AND PROVIDE DRAWING INDICATING ROUTE OF CONDUIT AND CALCULATION OF POWER SUPPLIES BY EACH OUTPUT CIRCUIT.
- EXTEND 3/4" CONDUIT FROM EACH TV OUTLET TO CABLE TRAY.
- EXISTING VOICE COMM CLOSET TO SERVICE VOICE PUNCH DOWN FROM AREA F ROOMS.
- EXISTING DATA COMM ROOM TO SERVICE DATA PUNCH DOWN FROM AREA F ROOMS.
- COMMUNICATION CLOSET TO SERVICE VOICE AND DATA FOR AREA E ROOMS.
- FINAL LOCATION OF DEVICE SHALL BE COORDINATED WITH GOVERNMENT FURNISHED EQUIPMENT.
- MULTIPLE STROBE LOCATION SHALL HAVE STROBES SYNCHRONIZED.
- EXTEND A/V CIRCUIT TO NEW DEVICES.

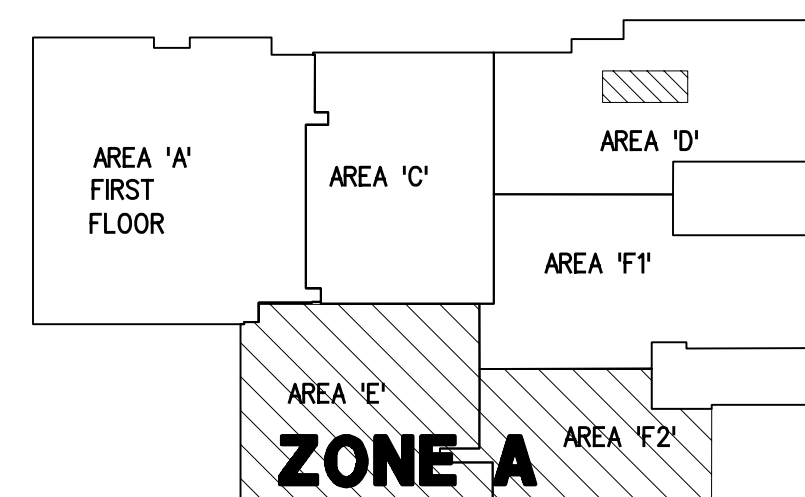
NURSE CALL LEGEND

- WALL MOUNTED EMERGENCY STATION PULL CORD
- WALL MOUNTED DOME LIGHT
- WALL MOUNTED NURSE CALL ANNUNCIATOR
- WALL MOUNTED NURSE CALL POWER CONTROL CABINET
- AMPLIFIER

FIRE ALARM EQUIPMENT LEGEND

SYMBOL	MODEL NO.	DESCRIPTION	REMARKS
FACP	MXL	PYROTRONICS MAIN ANALOG/ADDRESSABLE PANEL WITH ADDRESSABLE LOOPS, AUDIBLE CIRCUITS AND 24 HR. STANDBY BATTERIES	EXISTING
RAP	RCC-1FT	PYROTRONICS REMOTE ANNUNCIATOR/CONTROL PANEL	FLUSH MOUNT AS INDICATED.
F	MSI-10B	MANUAL FIRE ALARM STATION, SINGLE ACTION ADDRESSABLE TYPE	FLUSH MOUNT TO 3 1/2" DEEP OUTLET BOX, MOUNT 48" A.F.F.
SP	FP-11 w/ DB-11	PHOTO ELECTRIC SMOKE DETECTOR, ADDRESSABLE TYPE WITH STANDARD 2 WIRE BASE	MOUNTS TO 4" OCTAGON BOX.
SP	FP-11 w/ DB-10XPR	PHOTO ELECTRIC SMOKE DETECTOR, ADDRESSABLE TYPE WITH RELAY SURFACE BASE	MOUNTS TO 4" OCTAGON BOX.
SP	AD-11 XPR w/FP-11	PHOTO ELECTRIC DUCT SMOKE DETECTOR, ADDRESSABLE TYPE WITH RELAY SURFACE BASE	MOUNT AS INDICATED ON DRAWINGS. FINAL LOCATION TO BE DETERMINED IN FIELD.
SP	FPT-11 w/ DB-11	135° THERMAL DETECTOR, ADDRESSABLE TYPE WITH STANDARD 2 WIRE SURFACE BASE	MOUNTS TO 4" OCTAGON BOX.
SP	EXISTING	COMBINATION HORN/STROBE, 24V D/C, (ADA APPROVED)	MOUNTS TO 4" SQ. BY 2 1/8" DEEP BOX. MOUNT 6" BELOW FINISHED CEILING.
SP	EXISTING	STROBE ONLY UNIT, 24V D/C, 15 INDICATES CP. (ADA APPROVED)	MOUNTS TO STANDARD 4" SQ. BOX. SEE
SP	TRI-S	ADDRESSABLE INTERFACE MODULE-SINGLE ADDRESS	MOUNTS TO STANDARD 4" SQ. BOX
SP	TRI-D	ADDRESSABLE INTERFACE MODULE-DUAL ADDRESS	MOUNT IN FTC
SP	TRI-R	ADDRESSABLE INTERFACE MODULE-SINGLE ADDRESS w/ PROGRAMMABLE RELAY	
SP	--	24V D/C SPRINKLER SOLENOID	BY OTHERS
SP	--	SPRINKLER SYSTEM WATERFLOW SWITCH	BY OTHERS
SP	--	SPRINKLER SYSTEM TAMPER SWITCH	BY OTHERS
SP	--	PULL BOX WITH COVERPLATE PAINTED RED	4 11/16" DEEP BOX.
SP	SDH-2D	24V D/C SEMI-FLUSH MOUNTED MAGNETIC DOOR HOLDER	
SP	--	CONDUIT UP	
SP	--	CONDUIT DOWN	
SP	--	RESET SW. INDICATING SMOKE DAMPERS ABOVE CEILING	
SP	--	--	(E) DENOTED EXISTING DEVICE

PROJECT RENOVATE CLINIC BUILDING 1090
LITTLE ROCK AFB, ARKANSAS
DRAWING TITLE
DRAWING APPLIES TO
CONTRACT DOCUMENTS, SHEETS E1.31
PROJ. NO. 02209800 DR. BY
DATE 9-27-04 CHK. BY
EARTH TECH
SD-5
SHEET 01



KEY PLAN

N.T.S.

SCALE