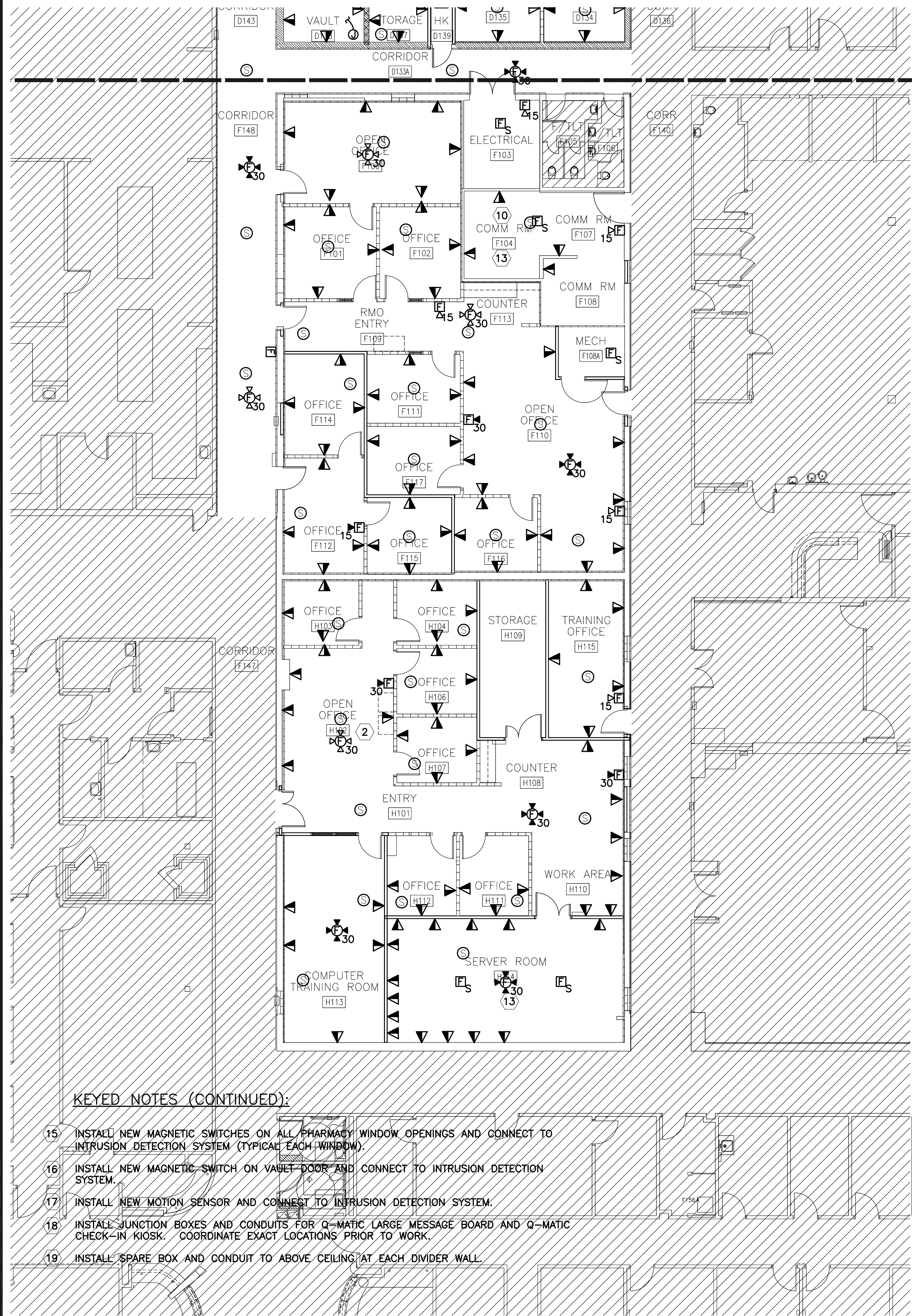


MCL LRAFB\_E203\_INST.dwg L:\2007\07056004 LRAFB Repair Renovate Medical Clinic Phase 4A\Drawings\REC\Key Plan\g-1p01.dwg 5/11/09 2:27 pm  
Images: [none]  
Xrefs: [S:\COMPANY WIDE\Code Standards\STAMPS\GARVER.LLC-AR-766.dcf AR-766.dcf L:\2007\07056004 LRAFB Repair Renovate Medical Clinic Phase 4A\Drawings\REC\Key Plan\g-1p01.dwg]



KEYED NOTES (CONTINUED):

15. INSTALL NEW MAGNETIC SWITCHES ON ALL PHARMACY WINDOW OPENINGS AND CONNECT TO INTRUSION DETECTION SYSTEM (TYPICAL EACH WINDOW).
16. INSTALL NEW MAGNETIC SWITCH ON VAULT DOOR AND CONNECT TO INTRUSION DETECTION SYSTEM.
17. INSTALL NEW MOTION SENSOR AND CONNECT TO INTRUSION DETECTION SYSTEM.
18. INSTALL JUNCTION BOXES AND CONDUITS FOR Q-MATIC LARGE MESSAGE BOARD AND Q-MATIC CHECK-IN KIOSK. COORDINATE EXACT LOCATIONS PRIOR TO WORK.
19. INSTALL SPARE BOX AND CONDUIT TO ABOVE CEILING AT EACH DIVIDER WALL.

1 TELECOMMUNICATIONS INSTALLATION PARTIAL PLAN  
E-203 SCALE: 1/8" = 1'-0"

MATCH LINE

KEYED NOTES:

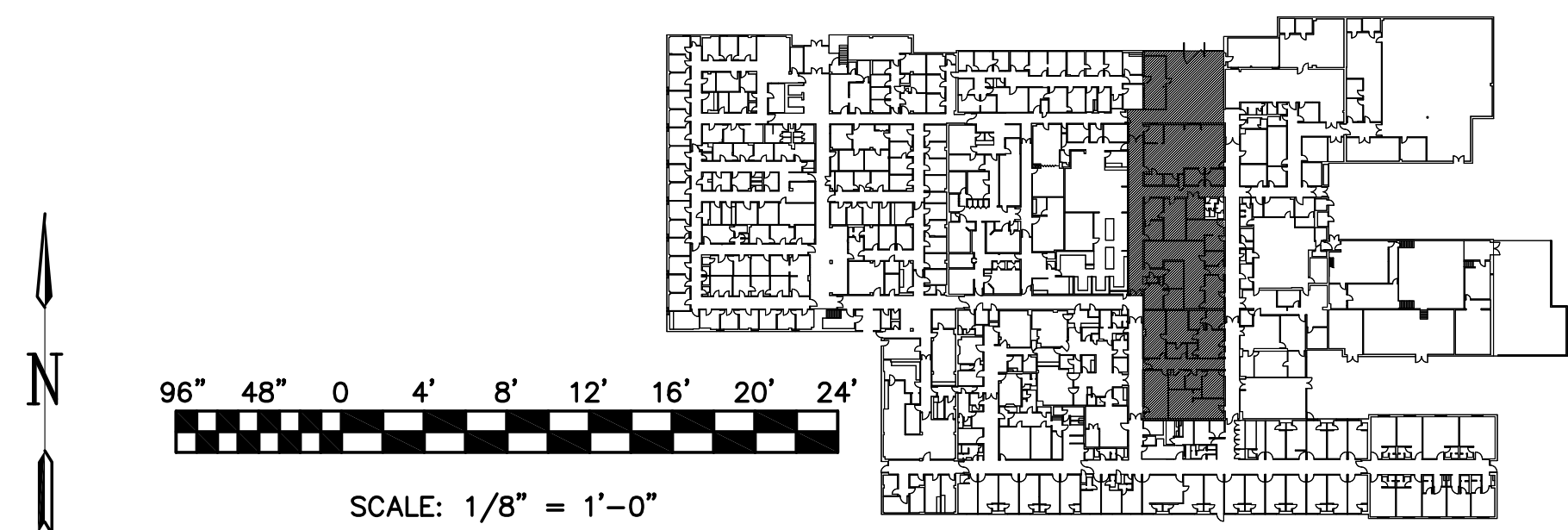
1. REINSTALL, EXTEND, AND RECONNECT TO EXISTING PHARMACY WAITING AREA SPEAKER SYSTEM. (TYPICAL OF 5)
2. REINSTALL, EXTEND, AND RECONNECT TO EXISTING PUBLIC ADDRESS SYSTEM. (TYPICAL)
3. REINSTALL, EXTEND, AND RECONNECT CABLE AND CONDUIT TO EXISTING MOTION SENSOR.
4. REINSTALL, EXTEND, AND RECONNECT CABLE AND CONDUIT TO EXISTING ADVANTOR KEYPAD.
5. INSTALL NEW TAMPERPROOF PULL STATION COVER WITH INTEGRATED, HORN ALARM WHICH IS POWERED BY FIRE ALARM SYSTEM.
6. INSTALL JUNCTION BOXES AND CONDUITS FROM ROUGH-IN CCTV LOCATIONS BACK TO PHARMACY OFFICE. COORDINATE EXACT EQUIPMENT LOCATIONS PRIOR TO WORK.
7. INSTALL JUNCTION BOXES AND CONDUITS FOR Q-MATIC SIGNS AT ALL COUNTERS.
8. INSTALL NEW DURESS ALARM SWITCHES AT ALL COUNTERS AND CONNECT TO INTRUSION DETECTION SYSTEM (TYPICAL OF 6).
9. EXISTING ADVANTOR TRANSPONDER TO REMAIN, RECONNECT CIRCUIT.
10. INSTALL XX NEW 48-PORT PATCH PANELS WITHIN EXISTING RACKSPACE AND TERMINATE ALL TELECOMMUNICATIONS CABLES.
11. INSTALL NEW OVERHEAD COMMUNICATION OUTLETS. COORDINATE EXACT LOCATION WITH OWNER PRIOR TO WORK.
12. INSTALL NEW OVERHEAD CABLE TV OUTLET. INSTALL CABLE BACK TO COMM ROOM.
13. PROTECT EXISTING SERVER AND COMM ROOM EQUIPMENT DURING CONSTRUCTION WORK. EXISTING CABLE TRAYS AND CABLES SHALL BE PROTECTED. DUST AND DEBRIS SHALL BE PROMPTLY REMOVED. THESE ROOMS MUST BE SECURED FROM UNAUTHORIZED ENTRY.
14. INSTALL NEW CARD SWIPE READER, MAGNETIC LOCK, DOOR CONTACTS, AND PUSH-TO-EXIT BUTTON. CONNECT TO ADVANTOR SYSTEM AND FIRE ALARM SYSTEM. FIRE ALARM OVERRIDES AND UNLOCKS THE DOOR.

MATCH LINE

GENERAL NOTES:

1. ELECTRICAL AND COMMUNICATION OUTLETS SHALL BE INSTALLED AT UNIFORM MOUNTING HEIGHT, INCLUDING NEW AND EXISTING DEVICES. ADJUST EXISTING AS REQUIRED TO MATCH NEW ITEMS.

2 TELECOMMUNICATIONS INSTALLATION PARTIAL PLAN  
E-203 SCALE: 1/8" = 1'-0"

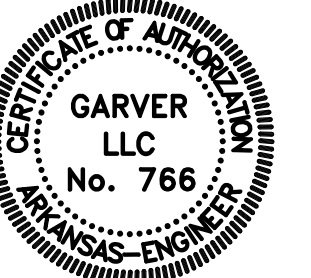


LITTLE ROCK A.F.B.  
ARKANSAS

**GARVER** 1010 Battery St.  
Little Rock, AR  
72202  
501-376-3633  
www.GarverUSA.com

**CROMWELL**  
ARCHITECTS ENGINEERS

101 SOUTH SPRING ST  
LITTLE ROCK AR 72201  
TELEPHONE 501-372-2900  
FACSIMILE 501-372-0482



No.	Revision/Issue	Date	BY	APP'D

PROJECT TITLE  
REPAIR & RENOVATE MED. CLINIC PH IV A  
LITTLE ROCK AIR FORCE BASE  
JACKSONVILLE, ARKANSAS

SHEET TITLE  
TELECOMMUNICATIONS  
INSTALLATION PLAN

DRAWN BY MCL	LEAD DESIGNER ECF
TECH REVIEWER ECF	PROJECT NUMBER NKAK 06-8006 4A
DESIGNED BY ECF	SHEET E-203
DATE 13 MAY 2009	SCALE AS SHOWN
SCALE AS SHOWN	46 OF 51