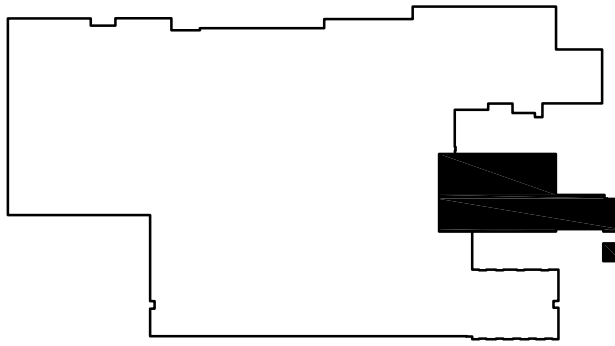


1 MAIN ELECTRICAL/MECHANICAL ROOMS PLAN  
SCALE: 1/4" = 1'-0"

GENERAL NOTES:

1. HEAVY TONE LINEWORK AND TEXT DENOTE NEW WORK. LIGHT TONE LINEWORK AND TEXT DENOTES EXISTING CONDITIONS TO REMAIN. DASHED LINEWORK DENOTES CONDUIT/WIRE RUN UNDERGROUND.

- LEGEND:
- 120/208V PANELBOARD/EQUIPMENT
  - 277/480V PANELBOARD/EQUIPMENT



KEY PLAN

SHEET PLOTTED FULL SIZE = 24"x36"		DATE REVISED
NOTICE: THIS IS THE PERSONAL PROPERTY OF KROESCHELL ENGINEERING CO. AND ALL USE IS FORBIDDEN EXCEPT UPON WRITTEN CONSENT.		
CAD Filename: K\\Air Force Bases\\Little Rock\\14554		
ADDITIONS AND REVISIONS		
ISSUED FOR 65% DESIGN		1/10/14
ISSUED FOR 65% DESIGN-REV. 1		1/13/14
ISSUED FOR 100% DESIGN		2/21/14
<div><div><b>KROESCHELL</b> ENGINEERING Co.</div><div>3222 KENNICOTT AVE. ARLINGTON HEIGHTS, IL 60004 (312) 649-7980 / FAX: (312) 337-1944 KROESCHELL.COM</div></div>		<div><div><b>dkjv</b> Donkey-Kube Joint Venture</div><div>515 DOVER RD. ROCKVILLE, MD 20850 (301) 315-7456 / FAX: (240) 453-8722 DONKEYKUBE.COM</div></div>
<div><div>19TH MEDICAL SUPPORT GROUP</div><div>LITTLE ROCK AFB, ARKANSAS</div><div>REPAIR OF MECHANICAL BUILDING INFRASTRUCTURE SYSTEMS</div></div>		
<div>DRAWN BY CHECKED BY APPROVED BY SCALE DATE</div>	<div>RPK MM MM 1/4" = 1'-0" JANUARY 2014</div>	<div>ENLARGED ELECTRICAL EQUIPMENT ROOM PLANS JOB No. 14554</div>
		<div>Sheet No.  E-6</div>