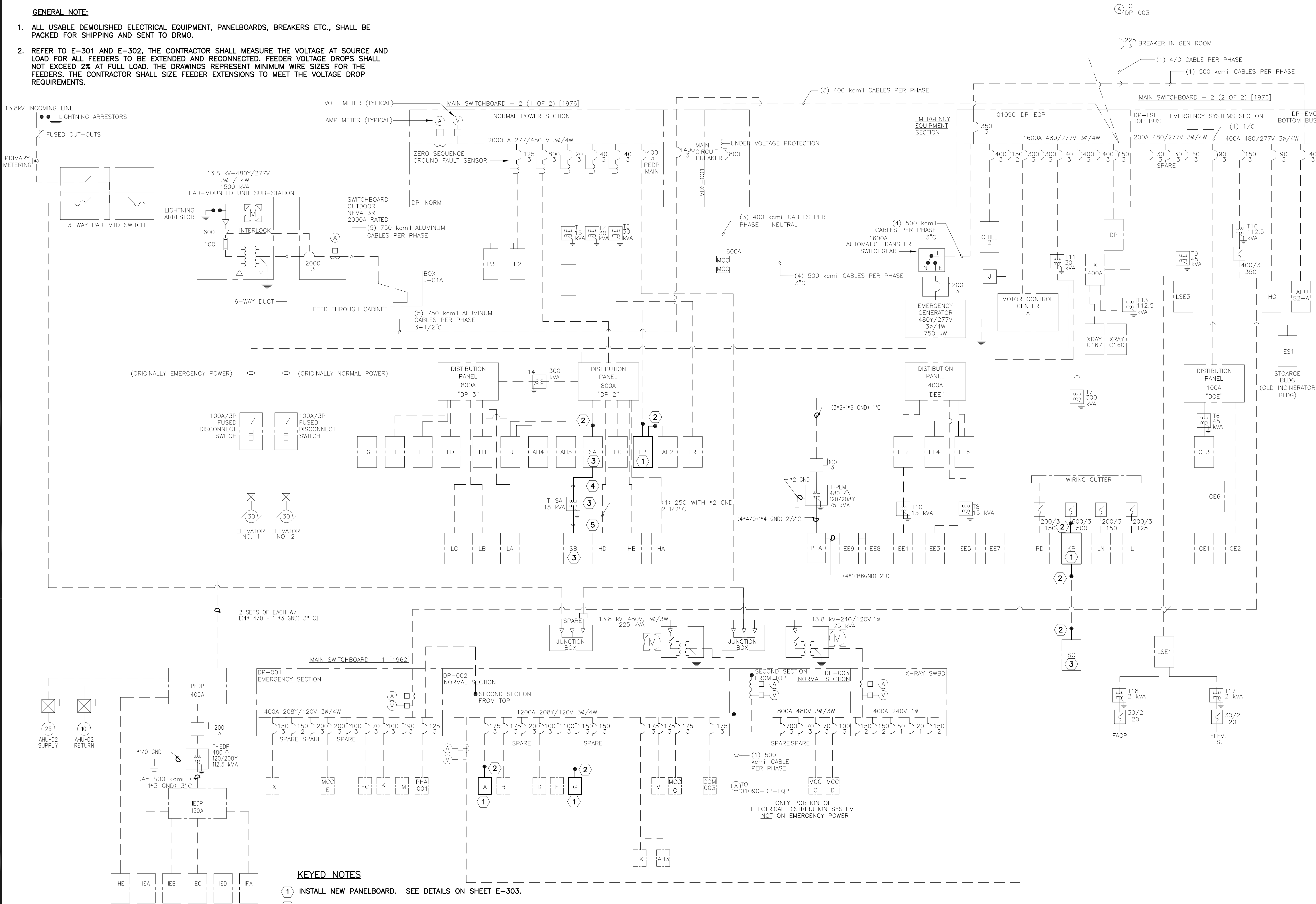


MCL LRAFB\_E302\_ONELINE.dwg L:\2007\07056004 LRAFB Repair Renovate Medical Clinic Phase 4A\Drawings\ 07056004 1=1 5/11/09 2:05 pm  
Images: [none]  
Xrefs: [S:\COMPANY WIP\Code Standards\STAMP\S\ GARVER LLC AR 766-JCF-AR-EGE-AR-ic1 or1 [XREF\ 02- bordersm]

GENERAL NOTE:

1. ALL USABLE DEMOLISHED ELECTRICAL EQUIPMENT, PANELBOARDS, BREAKERS ETC., SHALL BE PACKED FOR SHIPPING AND SENT TO DRMO.
2. REFER TO E-301 AND E-302, THE CONTRACTOR SHALL MEASURE THE VOLTAGE AT SOURCE AND LOAD FOR ALL FEEDERS TO BE EXTENDED AND RECONNECTED. FEEDER VOLTAGE DROPS SHALL NOT EXCEED 2% AT FULL LOAD. THE DRAWINGS REPRESENT MINIMUM WIRE SIZES FOR THE FEEDERS. THE CONTRACTOR SHALL SIZE FEEDER EXTENSIONS TO MEET THE VOLTAGE DROP REQUIREMENTS.



KEYED NOTES

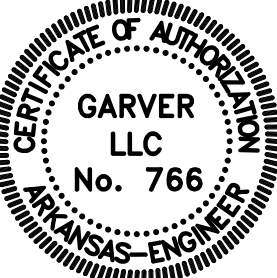
- 1 INSTALL NEW PANELBOARD. SEE DETAILS ON SHEET E-303.
- 2 INSTALL NEW 3M SPLICE KIT BASED ON WIRE SIZE. REFER TO SPECIFICATION 16120 ITEM 2.06 FOR SPLICE KIT REQUIREMENTS.
- 3 REINSTALL EXISTING EQUIPMENT AT NEW LOCATION.
- 4 INSTALL NEW TRANSFORMER FEEDER.
- 5 INSTALL NEW PANELBOARD FEEDER.



LITTLE ROCK A.F.B.  
ARKANSAS

**GARVER**  
1010 Battery St.  
Little Rock, AR  
72202  
501-376-3633  
www.GarverUSA.com

**CROMWELL**  
ARCHITECTS ENGINEERS  
101 SOUTH SPRING ST  
LITTLE ROCK AR 72201  
TELEPHONE 501-372-2900  
FACSIMILE 501-372-0482



No.	Revision/Issue	Date	BY	APP'D

PROJECT TITLE  
REPAIR & RENOVATE MED. CLINIC PH IV A  
LITTLE ROCK AIR FORCE BASE  
JACKSONVILLE, ARKANSAS

SHEET TITLE  
ELECTRICAL ONE-LINE  
INSTALLATION DIAGRAM

DRAWN BY MCL	LEAD DESIGNER ECF
TECH REVIEWER ECF	PROJECT NUMBER NKAK 06-8006 4A
DESIGNED BY ECF	SHEET E-302
DATE 13 MAY 2009	
SCALE AS SHOWN	48 OF 51