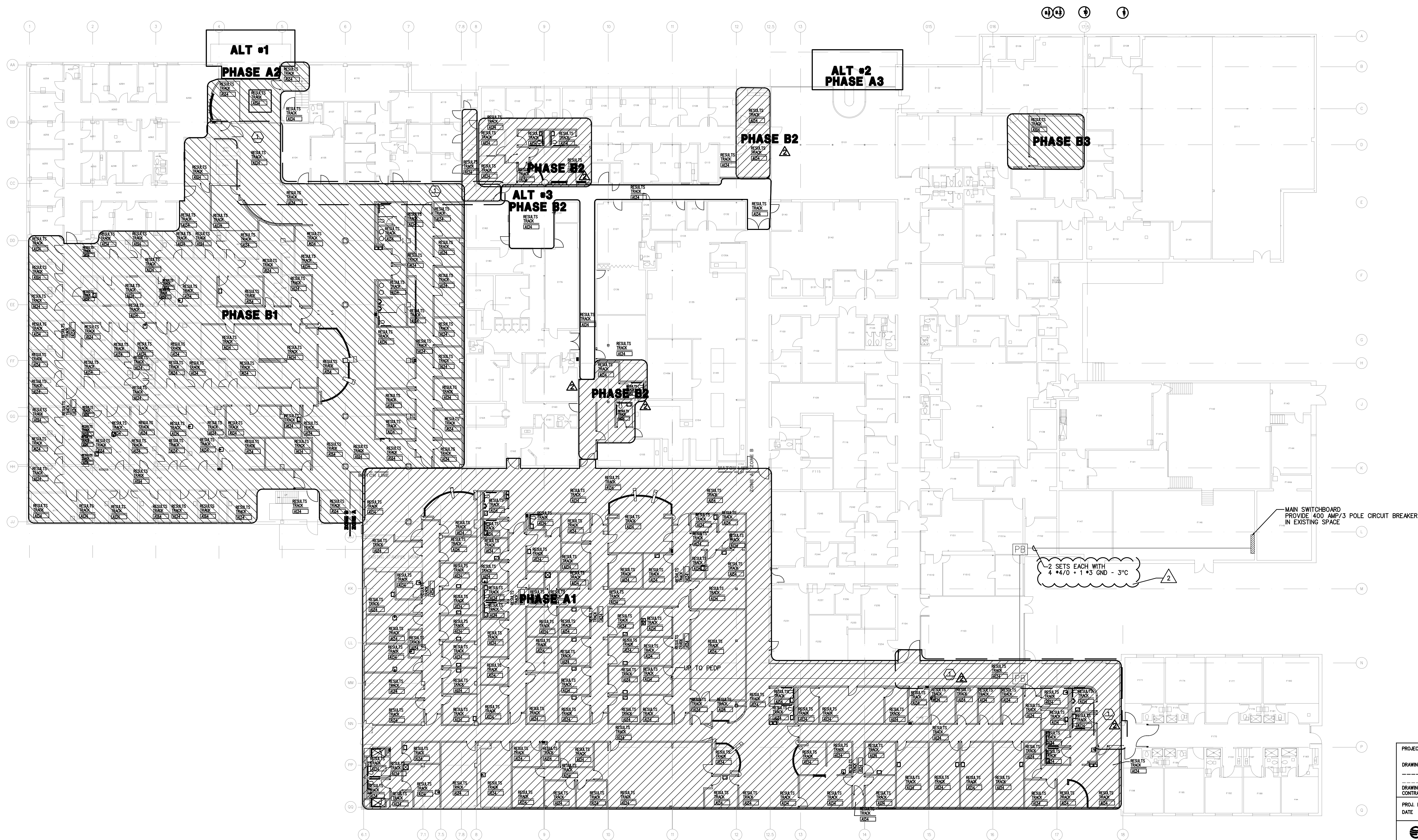


REVISIONS	AS-BUILT	ISSUED FOR FINAL WORK PLAN	ISSUED FOR CONSTRUCTION	DATE	APPROVED	SYMBOL	AMENDMENT DESCRIPTION
1	8/01/2005	10/31/2003	10/14/2003	10/14/2003			

DESIGNED BY: DATE: 08/04/2003	PROJECT NO. 6503	CHECKED BY: DRAWING CODE:	REVIEWED BY: SOLICITATION NUMBER:
U.S. ARMY ENGINEERING AND SUPPORT CENTER CORPS OF ENGINEERS HUNTSVILLE, ALABAMA	FLM EARTH TECH		

RENOVATE CLINIC
BUILDING 1090
LITTLE ROCK AFB, ARKANSAS
**ELECTRICAL POWER PLAN
AS-BUILT**

SHEET
REFERENCE
NUMBER:
E1.20
SHEET X OF XX



2 ZONE A AND B PLAN

SCALE 1/8" = 1'-0"

LEGEND

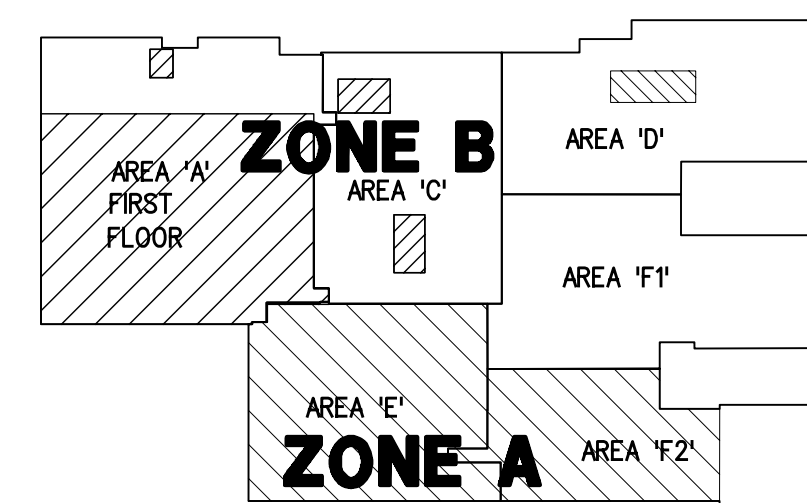
PHASE A	[Symbol]
PHASE B	[Symbol]
ALT #1, #2, #3	[Symbol]

KEY NOTES:

- Ⓜ AREA OF JOINT OCCUPANCY. MAINTAIN ACCESS. COORDINATE ALL WORK THROUGH FACILITY REPRESENTATIVE.
- Ⓜ AREA OF TEMPORARY ACCESS. TO BE CREATED FOLLOWING DEMOLITION AND PRELIMINARY CONSTRUCTION IN ZONE A.

4
**WORK IN ZONE B DELETED
FROM SCOPE OF PROJECT**

PROJECT RENOVATE CLINIC BUILDING 1090 LITTLE ROCK AFB, ARKANSAS DRAWING TITLE
DRAWING APPLIES TO CONTRACT DOCUMENTS, SHEETS E1.20
PROJ. NO. 02209800 DR. BY RWH DATE 10/14/03 CHK. BY RWH
EARTH TECH FLM SD-1 56 SHEET OF



KEY PLAN

N.T.S.

SCALE