

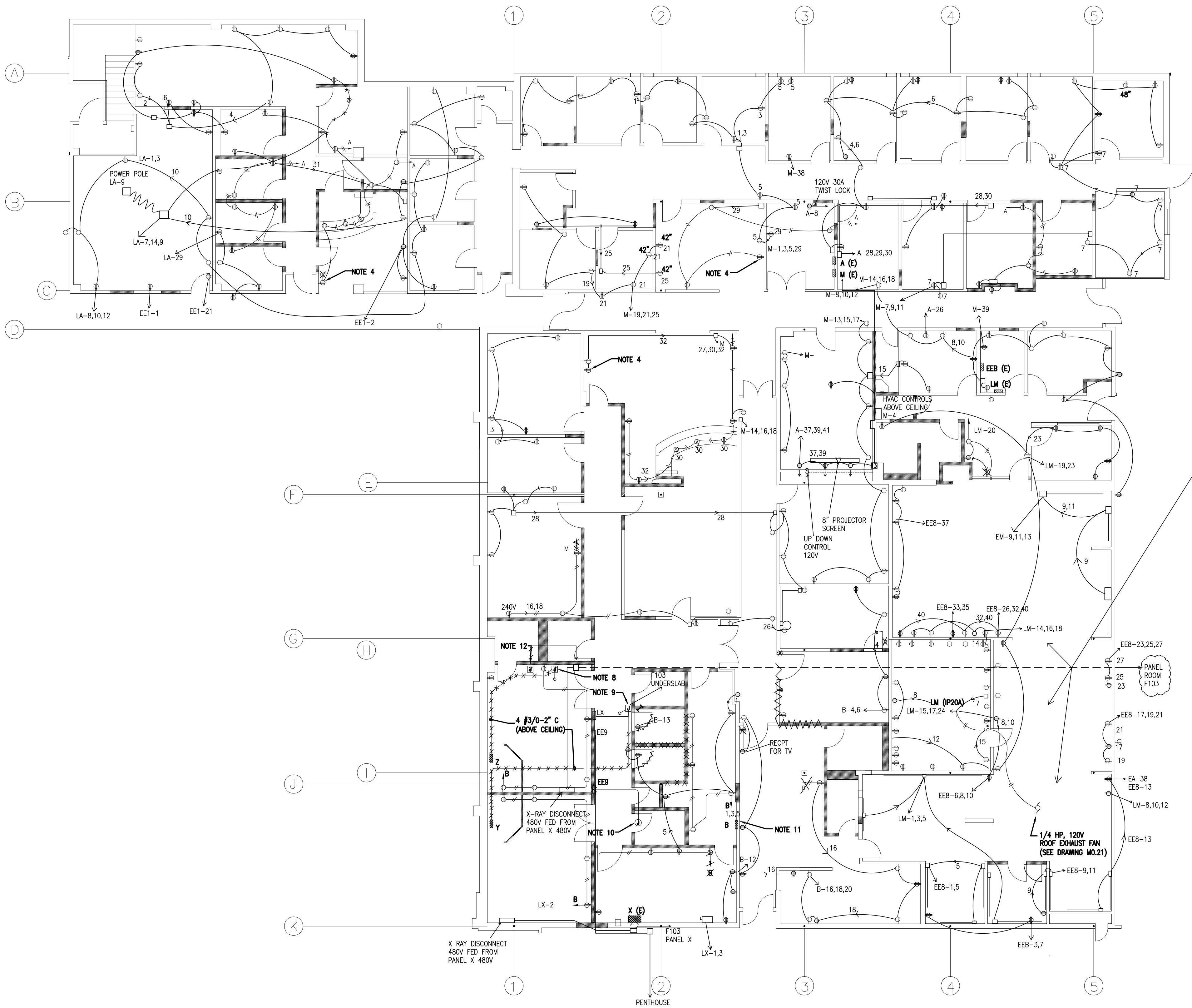


LITTLE ROCK A.F.B.
ARKANSAS

PROJECT TITLE
REPAIR MEDICAL CENTER PH 3
LITTLE ROCK AFB, ARKANSAS

SHEET TITLE
ELECTRICAL POWER PLAN

DRAWN BY RJR	LEAD DESIGNER AM
TECH REVIEWER KF	PROJECT NUMBER NKAK 06-8001
DESIGNED BY KF	SHEET E1.21
DATE 8-11-06	SCALE 1/8"=1'-0"
	33 OF 37

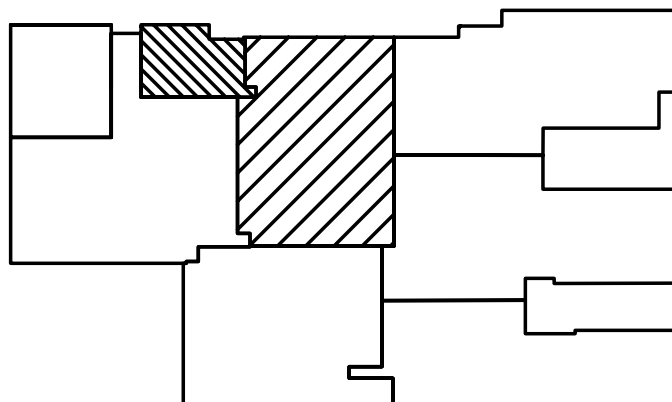
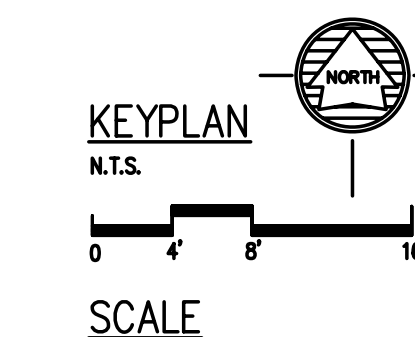


PARTITION LEGEND

- EXISTING WALL/PARTITION
NEW WALL/PARTITION

DRAWING NOTES:

- SEE DRAWING E0.00 FOR SYMBOL LEGEND.
- MAINTAIN CONTINUITY OF EXISTING BRANCH CIRCUITS TO EXISTING DEVICES, USING JUNCTION BOXES AND "JUMPER" WIRING TO BYPASS DEVICES REMOVED IN DEMOLITION.
- RECEPTACLES IN TOILETS TO BE GFI TYPE, MOUNTED 48" AFF, NEXT TO OR CENTERED BETWEEN ADJACENT SINKS.
- SEE DETAIL ON DRAWING E2.01 FOR EXACT LOCATION OF TV RECEPTACLES.
- PROVIDE (2) 20A, 120V, 1P CIRCUITS FROM PANEL "A" OR "M" TO NEW COM ROOM C117. CONNECT ONE CIRCUIT TO INDOOR A/C UNIT AND EXTEND THE OTHER CIRCUIT UP TO ROOF MOUNTED OUTDOOR A/C UNIT. PROVIDE SINGLE POLE DISCONNECT SWITCH FOR BOTH UNITS. (WEATHERPROOF FOR OUTDOOR UNIT)
- RING OUT ALL EXISTING CIRCUITS TO PROVIDE ACCURATE AND COMPLETE PANEL SCHEDULES. MARK FEEDING PANEL DESIGNATION AND CIRCUIT NUMBER ON EVERY RECEPTACLE COVER PLATE.
- NEW RECEPTACLE CIRCUITS SHALL BE FED FROM PANELS SHOWN AS SPARE CIRCUITS ARE AVAILABLE. UPDATE AS-BUILT DRAWINGS AND PANEL SCHEDULES ACCORDINGLY. PROVIDE NEW IP20A CIRCUIT BREAKERS AS REQUIRED.
- CHOP FLOOR AND ROUTE EXISTING UNDERFLOOR FEEDER AND SPARE CONDUIT INTO NEW, FLUSH MOUNTED 12"x12"x4" J-BOX MOUNTED 1" AFF. EXTEND CIRCUIT TO PANEL "Z" AS SHOWN.
- CHOP FLOOR AND ROUTE EXISTING UNDERFLOOR FEEDER AND SPARE CONDUIT INTO NEW, FLUSH MOUNTED 12"x12"x4" J-BOX MOUNTED 1" AFF. EXTEND CIRCUIT TO PANEL "Y" AS SHOWN.
- ROUTE ALL EXISTING FEEDERS AND BRANCH CIRCUITS DISCONNECTED FROM OLD PANEL EE9 INTO 12"x12"x6" J-BOX ABOVE CEILING. EXTEND CIRCUITS TO NEW PANEL EE9 AS SHOWN.
- PROVIDE NEW PANEL "B" IN SAME LOCATION AS OLD PANEL, EXCEPT "FLIPPED" TO OPPOSITE SIDE OF WALL AS SHOWN. RECONNECT ALL EXISTING AND NEW CIRCUITS, PROVIDING CIRCUIT BREAKERS AS REQUIRED.
- PROVIDE 10"x10"x4" J-BOX AT END OF FEEDER CUT BACK DURING DEMOLITION. EXTEND FEEDER WITH 4 #3/0-2" C TO LOCATION IN X-RAY AREA AS DIRECTED BY BASE.



1 ELECTRICAL POWER PLAN

SCALE: 1/8" = 1'-0"