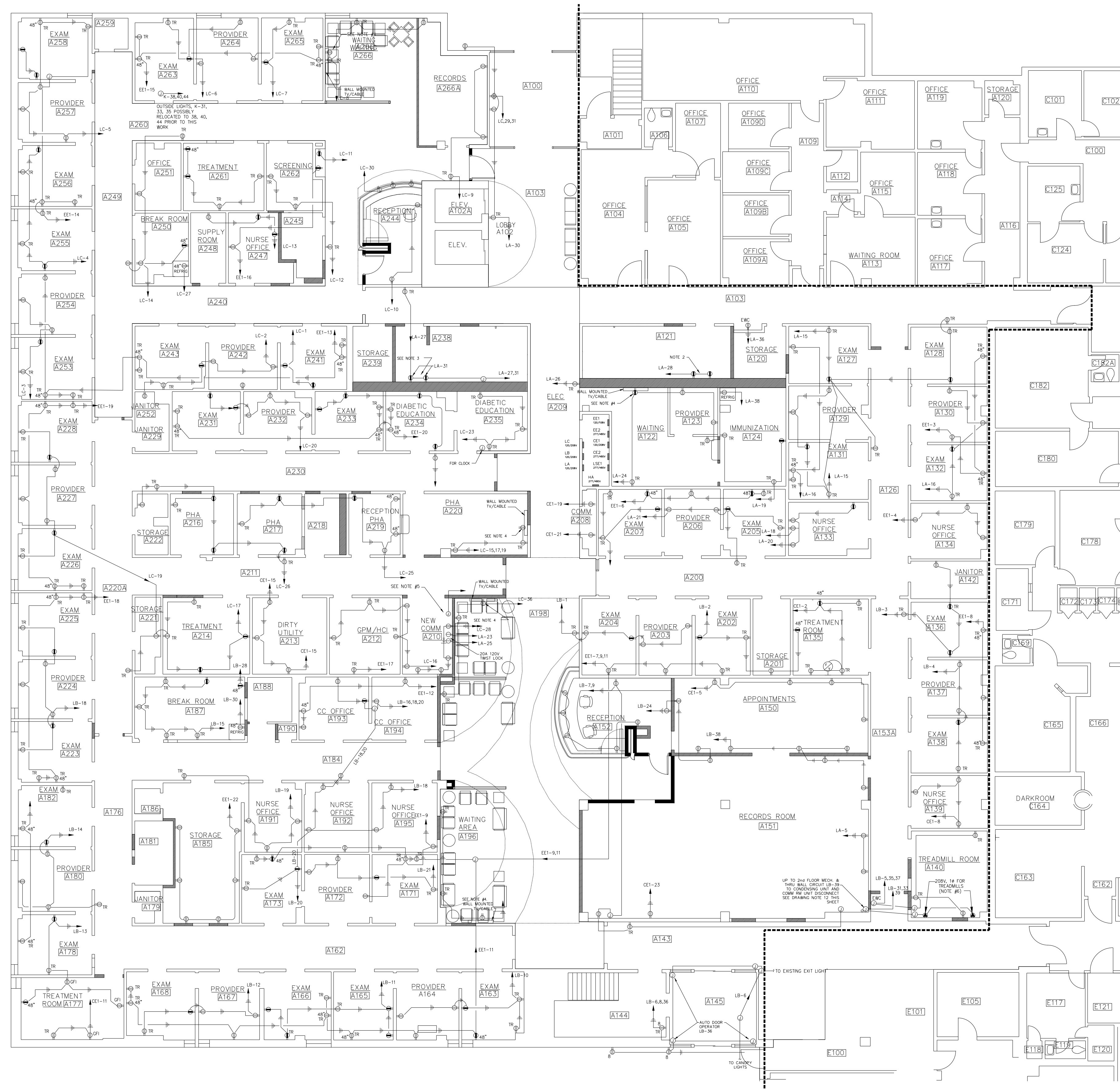


LITTLE ROCK A.F.B.
ARKANSAS

FPM

804 West Curtis Drive, Suite H
Midwest City, OK 73110
phone: 405.869.9212
fax: 405.869.9222
www.fpm-group.com

RECORD
DRAWINGS
MARCH 2007



PARTITION LEGEND

- EXISTING WALL/PARTITION
- NEW WALL/PARTITION

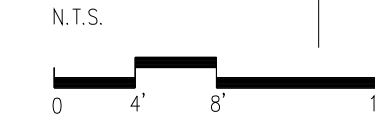
DRAWING NOTES:

- SEE DRAWING E0.00 FOR SYMBOL LEGEND.
- MAINTAIN CONTINUITY OF EXISTING BRANCH CIRCUITS TO EXISTING DEVICES, USING JUNCTION BOXES AND "JUMPER" WIRING TO BYPASS DEVICES REMOVED IN DEMOLITION.
- RECEPTACLES IN TOILETS A121 & A238 TO GFI TYPE, MOUNTED 48" AFF, CENTERED BETWEEN ADJACENT SINKS.
- SEE DETAIL ON DRAWING E2.01 FOR EXACT LOCATION OF TV RECEPTACLES.
- PROVIDE (2) 20A, 120V, 1Ø CIRCUITS FROM PANEL IN ROOM A209 TO NEW COM ROOM A210. CONNECT ONE CIRCUIT TO INDOOR A/C UNIT AND EXTEND THE OTHER CIRCUIT UP TO ROOF MOUNTED OUTDOOR A/C UNIT. PROVIDE SINGLE POLE DISCONNECT SWITCH FOR BOTH UNITS. (WEATHERPROOF FOR OUTDOOR UNIT) CONDUIT PENETRATION THROUGH ROOF SHALL RUN THROUGH THE SAME HOLE AS THE REFRIGERANT PIPING ROOF PENETRATION.
- PROVIDE (2) 20A, 208V, 1Ø CIRCUITS FROM PANEL IN ROOM A209 TO TREADMILL ROOM A140. CONNECT TO (2) NEW RECEPTACLES AS DIRECTED IN FIELD.
- RING OUT ALL EXISTING CIRCUITS TO PROVIDE ACCURATE AND COMPLETE PANEL SCHEDULES. MARK FEEDING PANEL DESIGNATION AND CIRCUIT NUMBER ON EVERY RECEPTACLE COVER PLATE.
- NEW RECEPTACLE CIRCUITS SHALL BE FED FROM PANEL LA, LB, OR LC AS SPARE CIRCUITS ARE AVAILABLE. UPDATE AS-BUILT DRAWING AND PANEL SCHEDULES ACCORDINGLY.
- ALL RECEPTACLES WITHIN 6'-0" OF A SINK SHALL BE GFI TYPE AS SHOWN.
- ALL RECEPTACLES IN WAITING AND EXAM ROOMS, EXCEPT GFI TYPES, SHALL BE TAMPER RESISTANT AS SHOWN.
- REFRIGERATORS IN ROOMS A124, A187, & A250 MUST BE PROVIDED WITH A DUPLEX RECEPTACLE ON A SEPARATE, DEDICATED CIRCUIT.
- CONDENSER FOR SPLIT SYSTEM FOR COMM. ROOM A210 - CE6-23 SECOND FLOOR ELECTRICAL CLOSET B162A

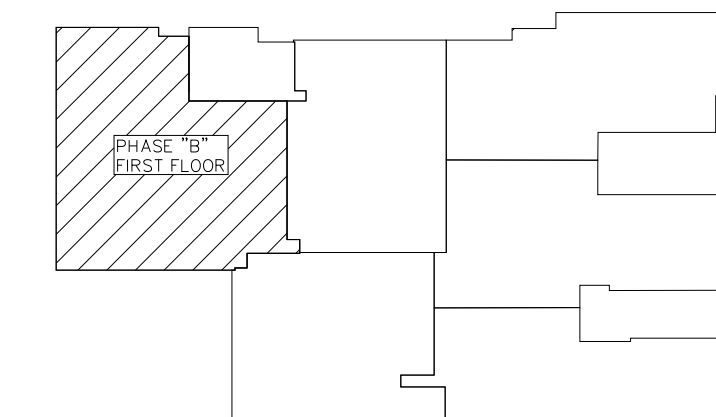
1 POWER PLAN

SCALE: 1/8" = 1'-0"

KEYPLAN
N.T.S.



SCALE



PROJECT TITLE
REPAIR MEDICAL CENTER PH B
LITTLE ROCK AFB, ARKANSAS

DRAWN BY RJR	LEAD DESIGNER AM
TECH REVIEWER KF	PROJECT NUMBER NKAK 05-8004A
DESIGNED BY KF	SHEET
DATE 1-21-08	E1.21
SCALE 1/8"=1"	35 OF 39