

TYPE: F10

FEATURES:  
LAMP TYPE: ONE 32W TRIPLE TUBE FLUORESCENT  
PROFILE: 4" SOLID BRASS WALL SCONCE, ADA  
COMPLIANT, SATIN NICKEL FINISH  
SHIELDING: ACRYLIC RESERVE GOLD LENS  
BALLAST: ELECTRONIC  
NOM. DIMENSION: 9 5/8" W x 13 7/8" L x 4" DEEP  
ELECTRICAL: 277 VOLT



WALL SCONCE

NOT TO SCALE

TYPE: F5 (F15 & F16 SIMILAR)

FEATURES:  
LAMP TYPE: F32TB/75CRI  
PROFILE: 2 LAMP  
SHIELDING: METAL ROUND HOLES  
BALLAST: ELECTRONIC <10% THD  
NOM. DIMENSION: 12" W x 48" L x 6" deep

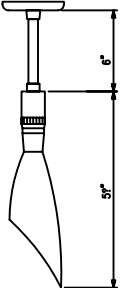
GENERAL DESCRIPTION  
HOUSING: COLD ROLLED STEEL, FLANGE TO  
COORDINATE WITH CEILING; EXTRUDED  
ALUMINUM LENS FRAME, HINGED REMOVAL  
AND SPRING-LOADED CATCHES  
MOUNTING: RECESSED INTO STANDARD NON-METRIC GRID  
REFLECTORS: REFLECTANCE MATTE WHITE  
ELECTRICAL: 277 VOLT  
EFFICIENCY: 80%

RECESSED DIRECT/INDIRECT 1'x4'  
FLUORESCENT TROFFER

NOT TO SCALE

TYPE: F18

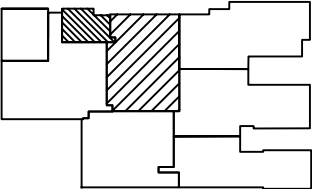
FEATURES:  
LAMP TYPE: 50 WATT 12V BI-PIN  
PROFILE: 1 LAMP  
SHIELDING: GLASS WHITE MATTE  
FINISH: MATTE CHROME  
BALLAST: 75 WATT TRANSFORMER 277/12 VOLT IN CANOPY  
NOM. DIMENSION: 5 3/4" L x 6" EXTENSION



SHORT STEM DOWNLIGHT FIXTURE

NOT TO SCALE

LIGHTING FIXTURE SCHEDULE						
FIXTURE MARK	LAMPS			FIXTURE VOLTAGE	MOUNTING	REMARKS
	TYPE	NO.	WATTS.			
F1	F32TB /75CRI	3	32	277	LAY-IN	2'x4", FLUORESCENT STATIC TROFFER, SHIELDING: 0.125" PATTERN IS 12 ACRYLIC PRISMATIC LENS BALLAST: ELECTRONIC <10% THD
*F2	F32TB /75CRI	2	32	277	LAY-IN	2'x4", FLUORESCENT STATIC TROFFER, SHIELDING: 3" DEEP 12 CELL SEM-SPECULAR LOW IRIDESCENT PARABOLIC LOUVER BALLAST: ELECTRONIC <10% THD
F3	F32TB /75CRI	3	32	277	LAY-IN	2'x4", FLUORESCENT STATIC TROFFER, SHIELDING: 3" DEEP 18 CELL SEM-SPECULAR LOW IRIDESCENT PARABOLIC LOUVER BALLAST: ELECTRONIC <10% THD
*F4	CF40-TT5	2	40	277	LAY-IN	2'x2' - DIRECT/INDIRECT - 52% OPEN PERFORATED METAL WITH WHITE ACRYLIC DIFFUSER BALLAST: ELECTRONIC <10% THD LITHUANIA - AVANTE OR EQUAL
*F5	F32TB /75CRI	2	32	277	LAY-IN	1'x4' DIRECT/INDIRECT WALL LIGHTING ASYMMETRIC DISTRIBUTION - 52% OPEN PERFORATED METAL WITH WHITE ACRYLIC DIFFUSER BALLAST: ELECTRONIC < 10% THD LITHUANIA - AVANTE OR EQUAL
F6	T5	2	14/21/28	277	COVE	STAGGERED STRIP 2 LAMP T5 LAMPS OF VARYING LENGTHS TO FULL REQUIRED TOILET ROOM COVE END TO END USING MULTIPLE FIXTURES. METALUX SML214/221/228-2LT-277-EBT
F7	100A 21/F	1	100	120	RECESSED	CLEAR ALZAK SEM-SPECULAR W/FLANGE WHITE PAINTED
F8	F32DT/RS	1	32	277	RECESSED	6" DIA. RECESSED COMPACT FLUORESCENT DOWN LIGHT. SEM-SPECULAR ALZAK LOW IRIDESCENT WITH WHITE TRIM FLANGE
F10	F32TTT	1	32	277	WALL	4" SOLID BRASS WALL SCONCE, ADA COMPLIANT. SATIN NICKEL FINISH W/REVERSE GOLD LENS "MAGO" NESSEN - NW680 -RG OR EQUAL
F14	F23TB/75CRI	1	32	277	SURFACE	SURFACE MOUNTED PRISMATIC ACRYLIC WRAPAROUND LENS BALLAST: ELECTRONIC <10% THD
F18	50W-MR16	1	50	277/12	PENDANT	PENDANT DECORATIVE LIGHTING - BALLAST CANOPY, EXTENSION AND GLASS FIXTURE, BRUCK OR EQUAL
F22	INCLUDED HALOGEN	1	-	120	CEILING	EXAM LIGHT ON ADJUSTABLE ARM, AMSCO/STERIS EXAMINER 10 EXAMINATION LIGHTING SYSTEM. PROVIDE WITH ALL REQUIRED MOUNTING SUPPORT HARDWARE.- LIGHT INTENSITY CONTROL.-DUAL SWING ARM
X1	LED	-	<1	120/277	UNIVERSAL	THIN PROFILE CAST METAL FRAME WITH CAST ALUMINUM FACEPLATE, SATIN FINISH, 6 INCH HIGH RED LETTERS, COMPLETE WITH MULTIPOINT LED LIGHT SOURCE DESIGNED FOR EVEN ILLUMINATION OF LETTERS AND ARROWS. SINGLE CIRCUIT OPERATION WITH SEALED BATTERY AND CHARGING CIRCUIT. ALL EXIT SIGNS SHALL HAVE SELF DIAGNOSTIC CIRCUITRY BUILT IN THAT MEETS THE LIFE SAFETY CODE REQUIREMENTS AND SHALL BE CONNECTED TO THE BUILDINGS FIRE ALARM. DUAL-LITE MODEL SCSRWNE1-FAP OR APPROVED EQUAL
X2	LED	-	<1	120/277	UNIVERSAL	THIN PROFILE CAST METAL FRAME WITH CAST ALUMINUM FACE PLATE, SATIN FINISH, 6 INCH HIGH RED LETTERS, COMPLETE WITH MULTIPOINT LED LIGHT SOURCE DESIGNED FOR EVEN ILLUMINATION OF LETTERS AND ARROWS. SINGLE CIRCUIT OPERATION WITH SEALED BATTERY AND CHARGING CIRCUIT. ALL EXIT SIGNS SHALL HAVE SELF DIAGNOSTIC CIRCUITRY BUILT IN THAT MEETS THE LIFE SAFETY CODE REQUIREMENTS AND SHALL BE CONNECTED TO THE BUILDINGS FIRE ALARM. DUAL-LITE MODEL SCSRWNE1-FAP OR APPROVED EQUAL
*XF2	_____	1	32	277	LAY-IN	BOONIE - GEN1 - 2000 LUMEN, 5 MINUTES BATTERY PACK UNIT INSTALL IN ALL FIXTURES INDICATED WITH DIAGONAL LINE THROUGH FIXTURE SYMBOL *
F23	F32TB/75CRI	4	32	277	LAY-IN	2'x4", FLUORESCENT STATIC TROFFER, SHIELDING: 0.125" PATTERN IS 12 ACRYLIC PRISMATIC LENS BALLAST: ELECTRONIC <10% THD
F24	F32TB/75CRI	2	32	277	RECESSED	1'x4", FLUORESCENT RECESSED. SHIELDING: 0.125" PATTERN IS 12 ACRYLIC PRISMATIC LENS BALLAST: ELECTRONIC <10% THD
F25	F17TB/75CRI	2	17	277	RECESSED	1'x2", FLUORESCENT RECESSED. SHIELDING: 0.125" PATTERN IS 12 ACRYLIC PRISMATIC LENS BALLAST: ELECTRONIC <10% THD
F26	F17TB/75CRI	2	32	277	LAY-IN	2'x2", FLUORESCENT STATIC TROFFER, SHIELDING: 0.125" PATTERN IS 12 ACRYLIC PRISMATIC LENS BALLAST: ELECTRONIC <10% THD



LITTLE ROCK A.F.B.  
ARKANSAS

							APP'D
							BY
							Date
							Revision/Issue
							No.

PROJECT TITLE REPAIR MEDICAL CENTER PH 3 LITTLE ROCK AFB, ARKANSAS		SHEET TITLE LIGHTING SCHEDULES & DETAILS	
DRAWN BY RJR	LEAD DESIGNER AM	E3.11	
TECH REVIEWER KF	PROJECT NUMBER NKAK 06-8001		
DESIGNED BY KF	SHEET	36 of 37	
DATE 8-11-06			
SCALE N/A			