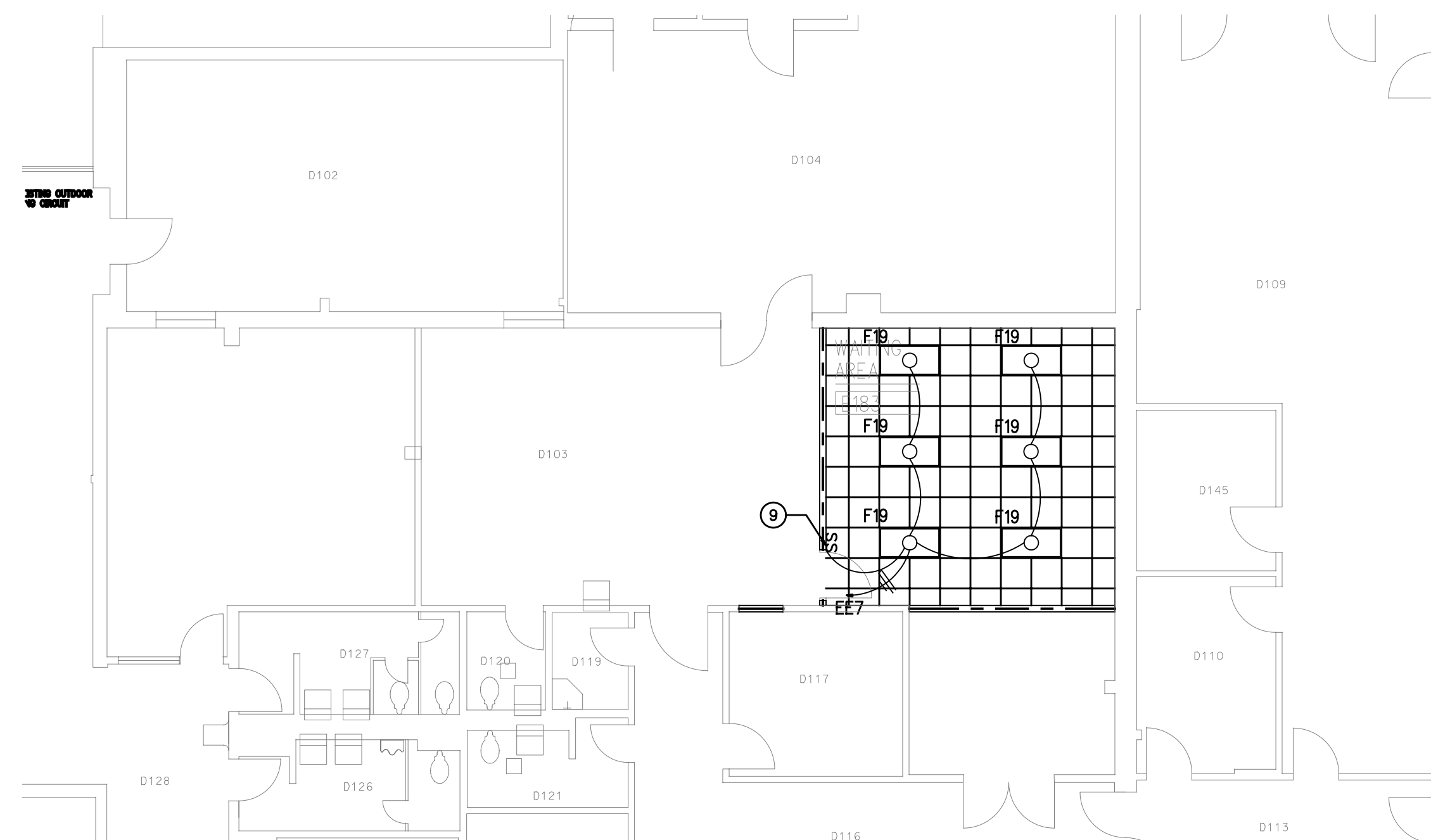


REVISIONS	DATE	DESCRIPTION	APPROVED	DATE
1	8/07/2003	ISSUED FOR FINAL WORK PLAN		
2	9/27/2004	ISSUED FOR FINAL WORK PLAN		
3	10/17/2003	ISSUED FOR FINAL WORK PLAN		
4	10/17/2003	ISSUED FOR FINAL WORK PLAN		

DESIGNED BY: DATE: 08/04/2003	PROJECT NO: 6503
DRAWN BY: U.S.	CHECKED BY: DRAWING CODE:
REVIEWED BY: SOLIDATION NUMBER:	

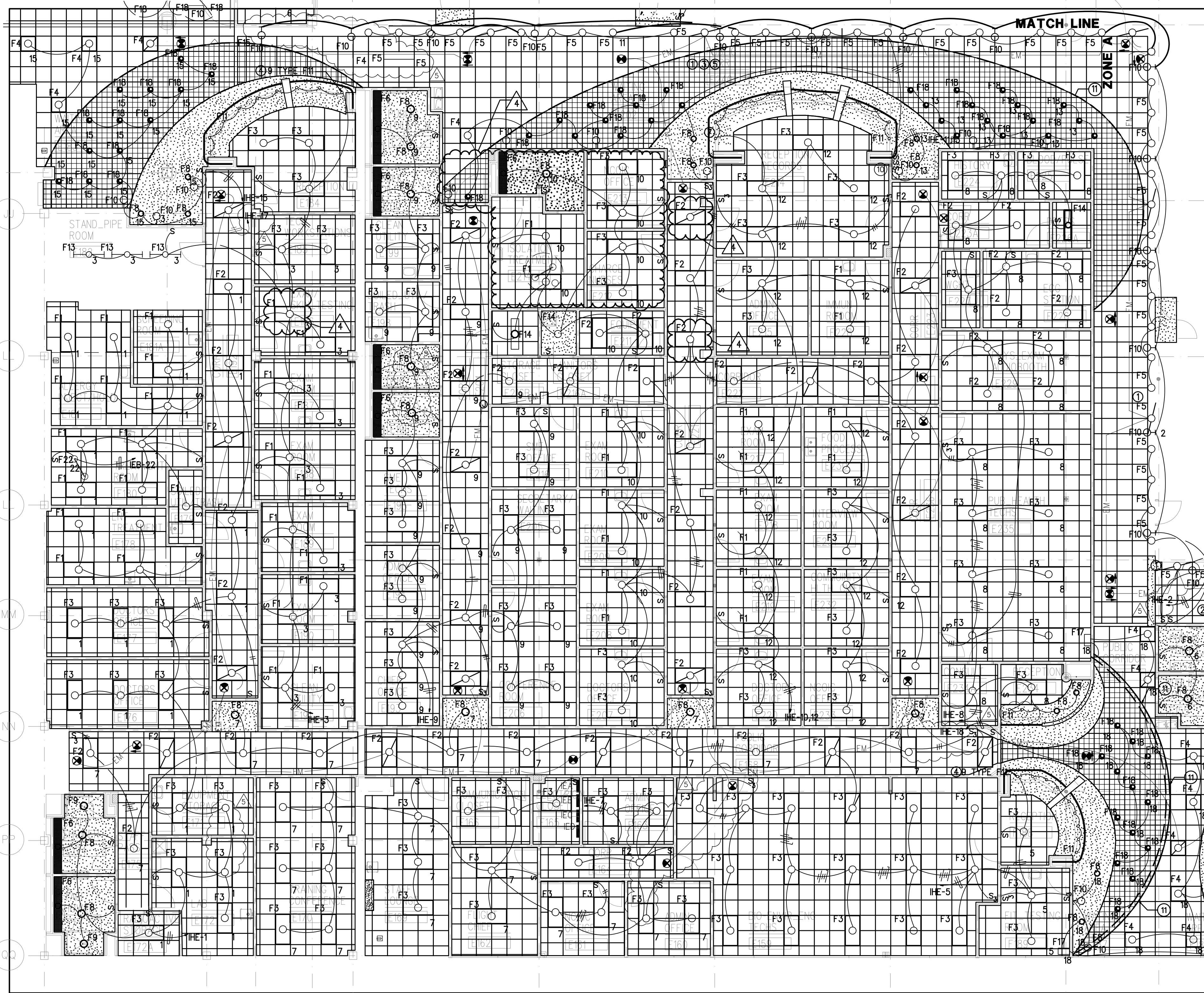
U.S. ARMY ENGINEERING AND SUPPORT CENTER CORPS OF ENGINEERS HUNTSVILLE, ALABAMA	FLM Design
---	---------------

SHEET REFERENCE NUMBER: <b>E1.11</b> SHEET X OF XX
--



1 PARTIAL PLAN OF AREA 'D' IN ZONE B

SCALE 1/8" = 1'-0"



2 ZONE A PLAN

SCALE 1/8" = 1'-0"

### GENERAL AND KEY NOTES

- 1 LIGHTING FIXTURES INDICATED WITH DIAGONAL SLASH ACROSS SYMBOLS ARE TO BE PROVIDED WITH BATTERY BACKUP XL1.
- 2 SWITCHES FOR WALL SCONCE FIXTURES F10 AND WALL WASH FIXTURE F5 FEED FROM PANEL 1HE-2.
- 3 COORDINATE FOUR FOOT WALL WASH FIXTURES TYPE F5 WITH REQUIREMENTS FOR WALL AND CEILING SUPPORT SYSTEM. FIXTURES SUPPLIED SHALL BE INSTALLED CONTINUOUS VERIFY WITH MANUFACTURER THAT FIXTURE WILL ALLOW INSTALLATION METHOD REQUIRED.
- 4 LOW VOLTAGE DOWN LIGHTS FIXTURE F11. PROVIDE 227/12 VOLT RECESSED HOUSING. FIXTURES MOUNT IN SOFFIT WITH DIFFUSER LIGHT TO DESK SIDE. SWITCH FROM BEHIND COUNTER.
- 5 SWITCHES FOR WALL SCONCE F10 AND WALL WASH FIXTURE F5 FED FROM PANEL 1HE-11.
- 6 LOW VOLTAGE DOWN LIGHTS FIXTURES, 10 TYPE F11 CIRCUIT 1HE-8. PROVIDE 227/12 VOLT RECESSED HOUSING. FIXTURE MOUNT IN SOFFIT WITH DIFFUSER LIGHT TO DESK SIDE. SWITCH FROM BEHIND COUNTER.
- 7 LOW VOLTAGE DOWN LIGHTS FIXTURES, 11 TYPE F11 CIRCUIT 1HE-12. PROVIDE 227/12 VOLT RECESSED HOUSING. FIXTURES MOUNT IN SOFFIT WITH DIFFUSER LIGHT TO DESK SIDE SWITCH FROM BEHIND COUNTER.
- 8 PENTHOUSE LIGHTING WORK INDICATED ON SHEET E1.23
- 9 SWITCH LAMP IN FIXTURES SO THAT OUTSIDE LAMPS ARE CONTROLLED BY ONE SWITCH. CENTER LAMPS BY SECOND SWITCH.
- 10 SWITCHES FOR WALL SCONCE FIXTURES F10 AND WALL WASH FIXTURE F5 FEED FROM PANEL 1HE-11.
- 11 FIBER OPTIC LIGHT SOURCE WITH LIGHT SOURCE AT END OF CABLE.
- 12 1000 WATT DIMMER - CEILING FIXTURES SWITCH AT DOOR AND CONTROLLED THIS LOCATION.
- 13 RELOCATE EXISTING EAST WING CORRIDOR LIGHTING SWITCHES

VOID. REMOVED FIBER OPTICAL LIGHTING

PROJECT RENOVATE CLINIC BUILDING 1090  
LITTLE ROCK AFB, ARKANSAS

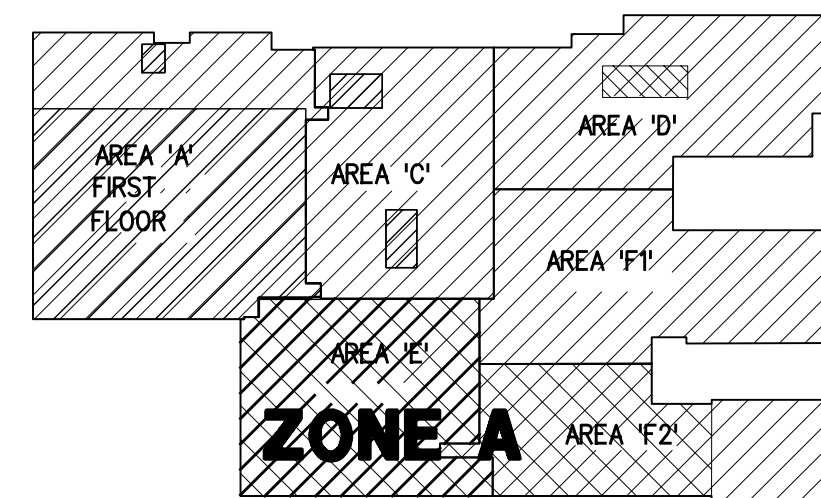
DRAWING TITLE

DRAWING APPLIES TO CONTRACT DOCUMENTS, SHEETS E1.11

PROJ. NO. 02209800 OR. BY: DATE 9-27-04 CHK. BY:

SUPPLEMENTAL DRAWING NO. SD-5 SHEET OF

EARTH TECH



KEY PLAN

N.T.S.

SCALE