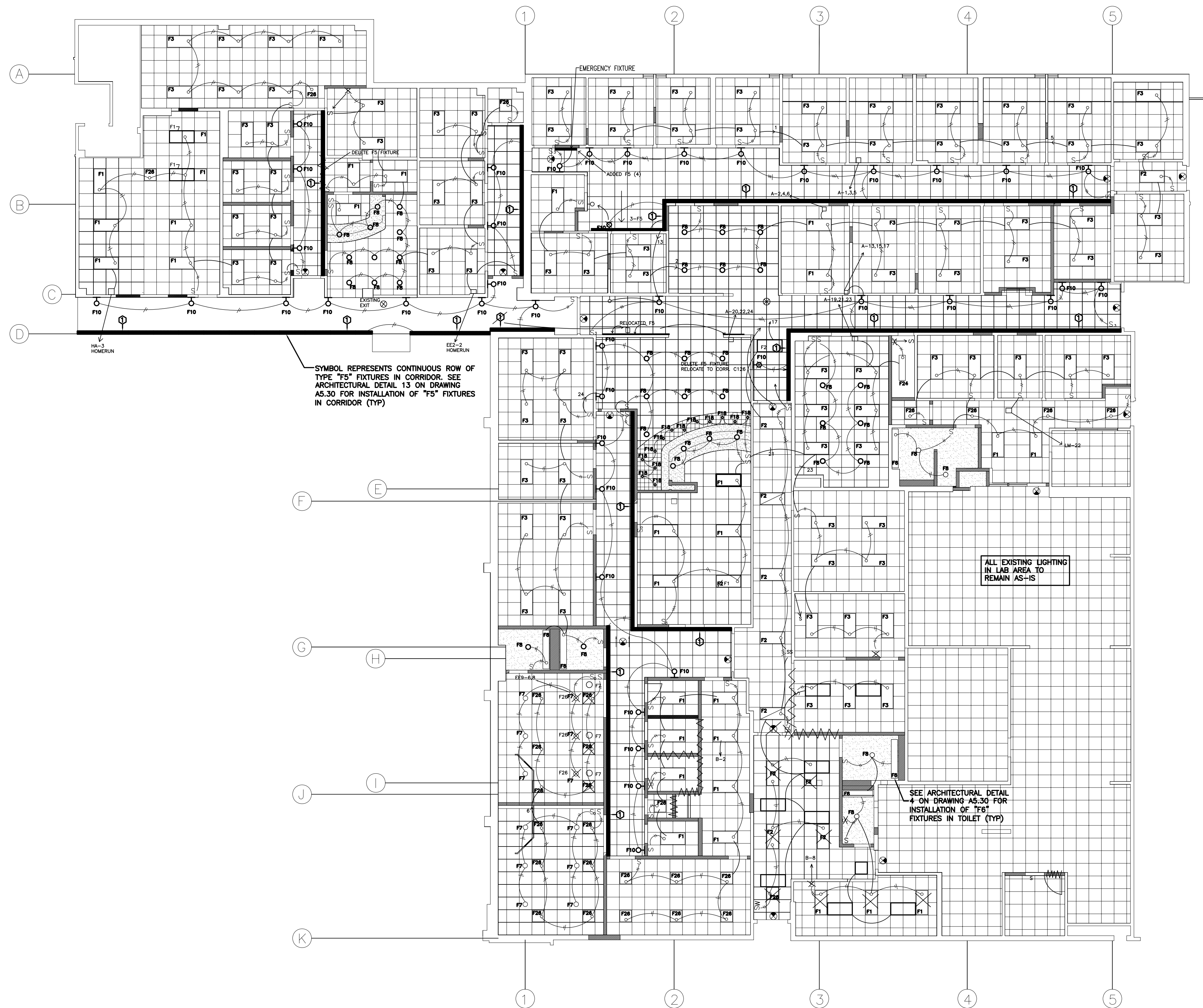




LITTLE ROCK A.F.B.  
ARKANSAS



DEMOLITION LEGEND

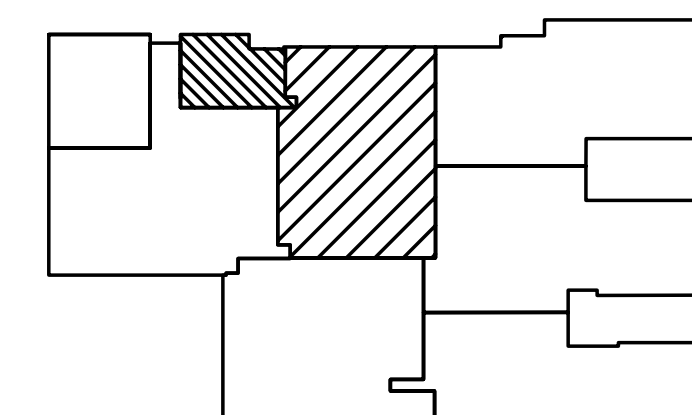
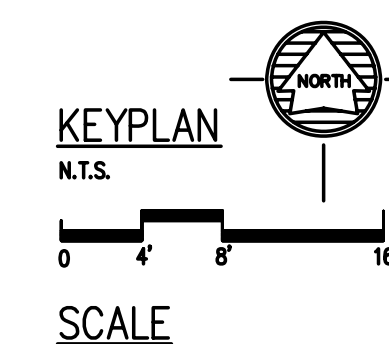
- EXISTING WALLS/PARTITIONS TO REMAIN  
EXISTING WALLS/PARTITIONS BEING REMOVED

DRAWING NOTES:

- SEE DRAWING E0.00 FOR ELECTRICAL SYMBOLS.
- THE FINAL LOCATION AND ARRANGEMENT OF LIGHTING FIXTURES SHALL BE OBTAINED FROM THE ARCHITECTURAL REFLECTED CEILING PLAN.
- REFER TO DETAIL 2 ON DRAWING A5.20 FOR MOUNTING DETAIL OF EXAM LIGHT IN ROOMS A-135, A-177, A-214 & A-261. EXACT LOCATION OF EXAM LIGHT TO BE DETERMINED AND DIRECTED BY BASE.
- PROVIDE AN UNSWITCHED CIRCUIT TO ALL FIXTURES WITH AN EMERGENCY BALLAST (SHOW WITH DIAGONAL LINE).
- ALL FIXTURES SHALL BE FED FROM THE EXISTING HOME RUN CIRCUITS RETAINED DURING DEMOLITION PHASE, WITH A MAXIMUM OF 12 AMPS PER CIRCUIT. TRACE EXISTING CIRCUITS TO PROVIDE ACCURATE AND COMPLETE AS-BUILT DRAWINGS AND PANEL SCHEDULES.
- PROVIDE ADDITIONAL BRANCH CIRCUIT WIRING AS REQUIRED TO ACCOMMODATE SWITCHING AND TO PROVIDE UNSWITCHED POWER TO EMERGENCY BALLASTS.
- CONNECT ALL EXIT LIGHTS TO EXISTING EXIT LIGHT CIRCUITS RETAINED DURING DEMOLITION PHASE.

KEY NOTES:

- ① INSTALL "F5" EMERGENCY BALLAST IN TYPE "F5" FIXTURE. PROVIDE UNSWITCHED CIRCUIT FOR EMERGENCY BALLAST ONLY.



AS BUILTS

1 ELECTRIC LIGHTING PLAN

SCALE: 1/8" = 1'-0"

No.	Revision/Issue	Date	By	APP'D

PROJECT TITLE REPAIR MEDICAL CENTER PH 3 LITTLE ROCK AFB, ARKANSAS	SHEET TITLE ELECTRICAL LIGHTING PLAN
DRAWN BY RJR	LEAD DESIGNER AM
TECH REVIEWER KF	PROJECT NUMBER NKAK 06-8001
DESIGNED BY KF	SHEET E1.11
DATE 8-11-06	SCALE 1/8"=1'-0"
	32 of 37