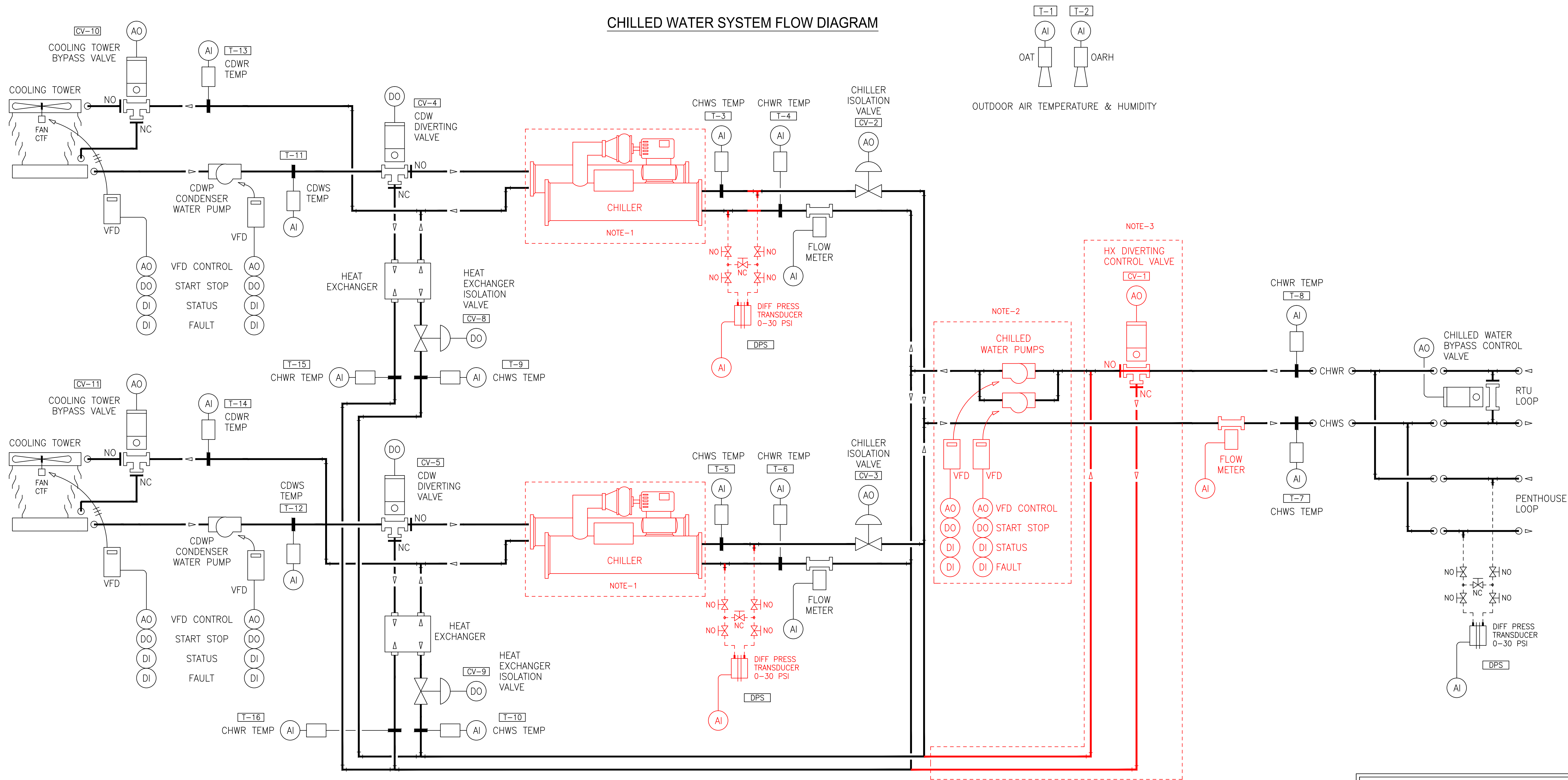


CHILLED WATER SYSTEM FLOW DIAGRAM



- NOTES:
- EXISTING CHILLERS WILL BE REMOVED. NEW TRANE CHILLERS WILL BE INSTALLED. DDC CONTRACTOR WILL REMOVE AND RE-INSTALL POINTS ON NEW CHILLER INCLUDING START STOP, STATUS, FAULT (ALARM), REMOTE SETPOINT AND A NEW BACNET CONNECTION TO PICK UP APPROX 15 ADDITIONAL POINTS TO BE DETERMINED. ALL CONDUIT, WIRING AND PROGRAMMING WILL BE THE RESPONSIBILITY OF THE DDC CONTRACTOR.
  - EXISTING CHILLED WATER PUMPS AND VFD'S WILL BE REMOVED. NEW CHILLED WATER PUMPS AND VFD'S WILL BE INSTALLED. DDC CONTRACTOR WILL REMOVE AND RE-INSTALL POINTS ON THE NEW VFD'S INCLUDING START STOP, STATUS, FAULT AND CONTROL INCLUDING A NEW BACNET CONNECTION TO PICK UP APPROX 10 ADDITIONAL POINTS TO BE DETERMINED. ALL CONDUIT, WIRING AND PROGRAMMING WILL BE THE RESPONSIBILITY OF THE DDC CONTRACTOR.
  - 3-WAY CONTROL VALVE WILL BE REMOVED. DDC CONTRACTOR TO REMOVE POINTS OF CONTROL, CONDUIT, WIRING AND ALL PROGRAMMING ASSOCIATED WITH THIS VALVE.

CAD Filename: controls.dwg	
ORIGINAL SHEET SIZE: D SIZE 36x24	DATE REVISED
ADDITIONS AND REVISIONS	
65% DESIGN DRAWINGS	11/27/2013
65% DESIGN DRAWINGS REV 1	1/10/2014
100% DESIGN DRAWINGS	2/21/2014

**KROESCHELL**  
ENGINEERING Co.

3222 KENNICOTT AVE.  
ARLINGTON HEIGHTS, IL 60004  
(312) 649-7980 / FAX (312) 337-1944  
KROESCHELL.COM

**dkjv**  
Donley-Kirlin Joint Venture

515 DOWER RD.  
ROCKVILLE, MD 20850  
(301) 315-7456 / FAX (240) 453-8722  
DONLEYKIRLIN.COM

LITTLE ROCK AFB  
19TH MEDICAL SUPPORT GROUP  
JACKSONVILLE, AR  
REPAIR OF BUILDING INFRASTRUCTURE SYSTEMS

DRAWN BY LJE	CHW SYSTEM MODS	Sheet No. TC-4
CHECKED BY -		
APPROVED BY -		
SCALE DATE	SEE PAGE NOVEMBER 2013	JOB No. 14462-600

NOTICE: THIS IS THE PERSONAL PROPERTY OF KROESCHELL ENGINEERING CO. AND ALL USE IS FORBIDDEN EXCEPT UPON WRITTEN CONSENT.