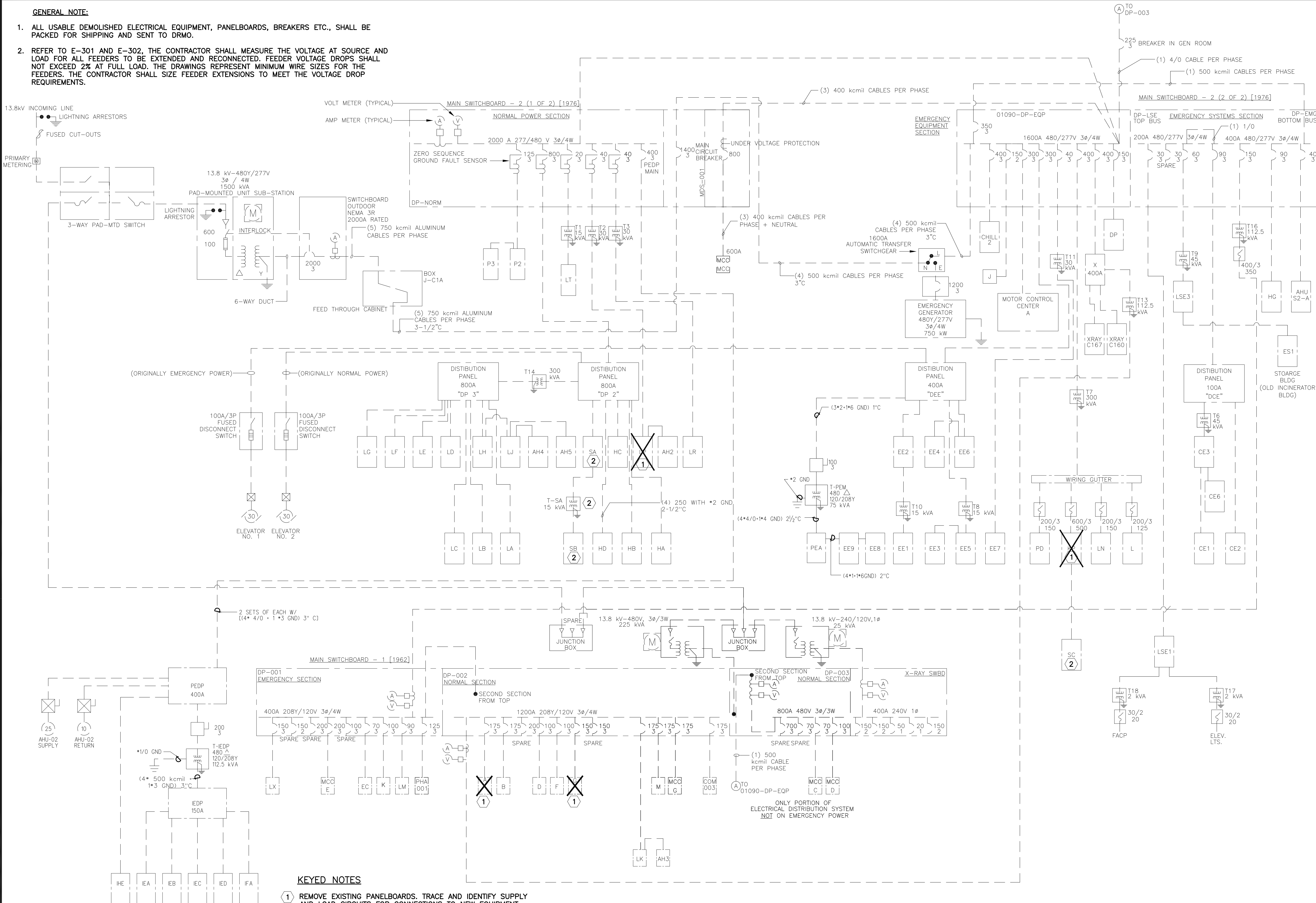


MCL LRAFB_E301_ONELINE.dwg L:\2007\07056004 LRAFB Repair Renovate Medical Clinic Phase 4A\Drawings\ 07056004 24x36 1=1 5/11/09 2:00 pm
Images: [none]
Xrefs: [S:\COMPANY WIDE\Code Standards\STAMP\S\ GARVER_ILC_AR_766\JCF-AR_ECF-AR.icf or [XREF\ 02- borders.mst]

GENERAL NOTE:

1. ALL USABLE DEMOLISHED ELECTRICAL EQUIPMENT, PANELBOARDS, BREAKERS ETC., SHALL BE PACKED FOR SHIPPING AND SENT TO DRMO.
2. REFER TO E-301 AND E-302, THE CONTRACTOR SHALL MEASURE THE VOLTAGE AT SOURCE AND LOAD FOR ALL FEEDERS TO BE EXTENDED AND RECONNECTED. FEEDER VOLTAGE DROPS SHALL NOT EXCEED 2% AT FULL LOAD. THE DRAWINGS REPRESENT MINIMUM WIRE SIZES FOR THE FEEDERS. THE CONTRACTOR SHALL SIZE FEEDER EXTENSIONS TO MEET THE VOLTAGE DROP REQUIREMENTS.



KEYED NOTES

- 1 REMOVE EXISTING PANELBOARDS. TRACE AND IDENTIFY SUPPLY AND LOAD CIRCUITS FOR CONNECTIONS TO NEW EQUIPMENT.
- 2 COORDINATE POWER EQUIPMENT RELOCATION WITH SCHEDULED SHUTDOWN AND SERVER ROOM RENOVATION WORK.



LITTLE ROCK A.F.B.
ARKANSAS

GARVER 1010 Battery St.
Little Rock, AR
72202
501-376-3633
www.GarverUSA.com

CROMWELL
ARCHITECTS ENGINEERS
101 SOUTH SPRING ST
LITTLE ROCK AR 72201
TELEPHONE 501-372-2900
FACSIMILE 501-372-0482



No.	Revision/Issue	Date	BY	APP'D

PROJECT TITLE
REPAIR & RENOVATE MED. CLINIC PH IV A
LITTLE ROCK AIR FORCE BASE
JACKSONVILLE, ARKANSAS

SHEET TITLE
ELECTRICAL ONE-LINE
REMOVAL DIAGRAM

DRAWN BY MCL	LEAD DESIGNER ECF
TECH REVIEWER ECF	PROJECT NUMBER NKAK 06-8006 4A
DESIGNED BY ECF	SHEET E-301
DATE 13 MAY 2009	
SCALE AS SHOWN	47 OF 51