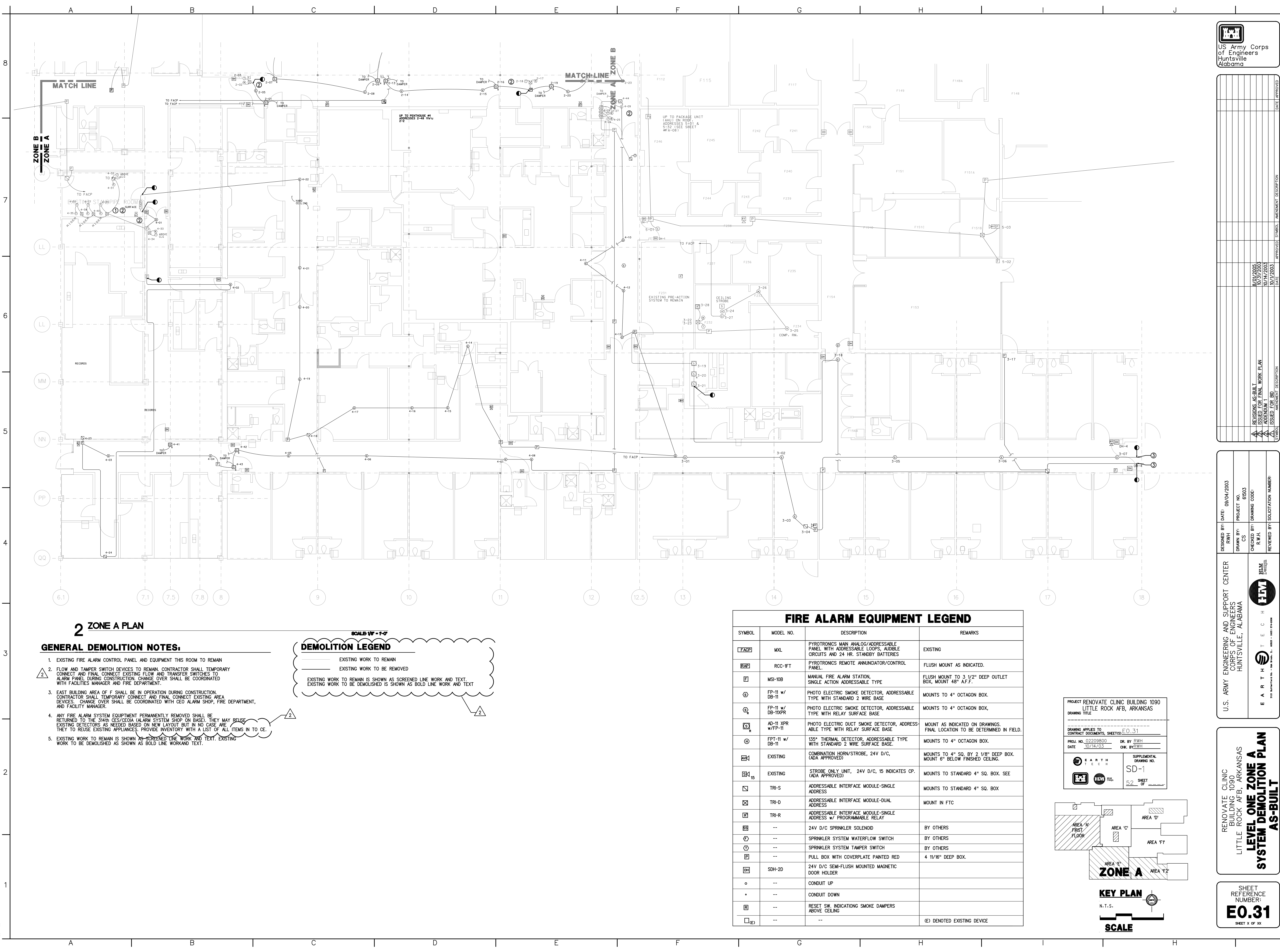


REVISIONS	DATE	DESCRIPTION
1	8/01/2005	ISSUED FOR FINAL WORK PLAN
2	10/17/2003	ADDED
3	10/17/2003	ADDED
4	10/17/2003	ADDED
5	10/17/2003	ADDED
6	10/17/2003	ADDED
7	10/17/2003	ADDED
8	10/17/2003	ADDED
9	10/17/2003	ADDED
10	10/17/2003	ADDED
11	10/17/2003	ADDED
12	10/17/2003	ADDED
13	10/17/2003	ADDED
14	10/17/2003	ADDED
15	10/17/2003	ADDED
16	10/17/2003	ADDED
17	10/17/2003	ADDED
18	10/17/2003	ADDED
19	10/17/2003	ADDED
20	10/17/2003	ADDED
21	10/17/2003	ADDED
22	10/17/2003	ADDED
23	10/17/2003	ADDED
24	10/17/2003	ADDED
25	10/17/2003	ADDED
26	10/17/2003	ADDED
27	10/17/2003	ADDED
28	10/17/2003	ADDED
29	10/17/2003	ADDED
30	10/17/2003	ADDED
31	10/17/2003	ADDED
32	10/17/2003	ADDED
33	10/17/2003	ADDED
34	10/17/2003	ADDED
35	10/17/2003	ADDED
36	10/17/2003	ADDED
37	10/17/2003	ADDED
38	10/17/2003	ADDED
39	10/17/2003	ADDED
40	10/17/2003	ADDED
41	10/17/2003	ADDED
42	10/17/2003	ADDED
43	10/17/2003	ADDED
44	10/17/2003	ADDED
45	10/17/2003	ADDED
46	10/17/2003	ADDED
47	10/17/2003	ADDED
48	10/17/2003	ADDED
49	10/17/2003	ADDED
50	10/17/2003	ADDED
51	10/17/2003	ADDED
52	10/17/2003	ADDED
53	10/17/2003	ADDED
54	10/17/2003	ADDED
55	10/17/2003	ADDED
56	10/17/2003	ADDED
57	10/17/2003	ADDED
58	10/17/2003	ADDED
59	10/17/2003	ADDED
60	10/17/2003	ADDED
61	10/17/2003	ADDED
62	10/17/2003	ADDED
63	10/17/2003	ADDED
64	10/17/2003	ADDED
65	10/17/2003	ADDED
66	10/17/2003	ADDED
67	10/17/2003	ADDED
68	10/17/2003	ADDED
69	10/17/2003	ADDED
70	10/17/2003	ADDED
71	10/17/2003	ADDED
72	10/17/2003	ADDED
73	10/17/2003	ADDED
74	10/17/2003	ADDED
75	10/17/2003	ADDED
76	10/17/2003	ADDED
77	10/17/2003	ADDED
78	10/17/2003	ADDED
79	10/17/2003	ADDED
80	10/17/2003	ADDED
81	10/17/2003	ADDED
82	10/17/2003	ADDED
83	10/17/2003	ADDED
84	10/17/2003	ADDED
85	10/17/2003	ADDED
86	10/17/2003	ADDED
87	10/17/2003	ADDED
88	10/17/2003	ADDED
89	10/17/2003	ADDED
90	10/17/2003	ADDED
91	10/17/2003	ADDED
92	10/17/2003	ADDED
93	10/17/2003	ADDED
94	10/17/2003	ADDED
95	10/17/2003	ADDED
96	10/17/2003	ADDED
97	10/17/2003	ADDED
98	10/17/2003	ADDED
99	10/17/2003	ADDED
100	10/17/2003	ADDED

DESIGNED BY: DATE: 08/04/2003	PROJECT NO. 6503
DRAWN BY: CS	CHECKED BY: R.W.H.
REVIEWED BY: SOLICITATION NUMBER:	
U.S. ARMY ENGINEERING AND SUPPORT CENTER CORPS OF ENGINEERS HUNTSVILLE, ALABAMA	FLM EARTH TECH 2000 Huntsville, AL 35894-0001

RENOVATE CLINIC  
BUILDING 1090  
LITTLE ROCK AFB, ARKANSAS  
**LEVEL ONE ZONE A  
SYSTEM DEMOLITION PLAN  
AS-BUILT**

SHEET  
REFERENCE  
NUMBER:  
**E0.31**  
SHEET X OF XX



## 2 ZONE A PLAN

### GENERAL DEMOLITION NOTES:

- EXISTING FIRE ALARM CONTROL PANEL AND EQUIPMENT THIS ROOM TO REMAIN
- FLOW AND TAMPER SWITCH DEVICES TO REMAIN. CONTRACTOR SHALL TEMPORARY CONNECT AND FINAL CONNECT EXISTING FLOW AND TRANSFER SWITCHES TO ALARM PANEL DURING CONSTRUCTION. CHANGE OVER SHALL BE COORDINATED WITH FACILITIES MANAGER AND FIRE DEPARTMENT.
- EAST BUILDING AREA OF F SHALL BE IN OPERATION DURING CONSTRUCTION. CONTRACTOR SHALL TEMPORARY CONNECT AND FINAL CONNECT EXISTING AREA DEVICES. CHANGE OVER SHALL BE COORDINATED WITH CEO ALARM SHOP, FIRE DEPARTMENT, AND FACILITY MANAGER.
- ANY FIRE ALARM SYSTEM EQUIPMENT PERMANENTLY REMOVED SHALL BE RETURNED TO THE 344th CES/CEQA (ALARM SYSTEM SHOP ON BASE). THEY MAY REUSE EXISTING DETECTORS AS NEEDED BASED ON NEW LAYOUT BUT IN NO CASE ARE THEY TO REUSE EXISTING APPLIANCES. PROVIDE INVENTORY WITH A LIST OF ALL ITEMS IN TO CE.
- EXISTING WORK TO REMAIN IS SHOWN AS SCREENED LINE WORK AND TEXT. EXISTING WORK TO BE DEMOLISHED AS SHOWN AS BOLD LINE WORK AND TEXT.

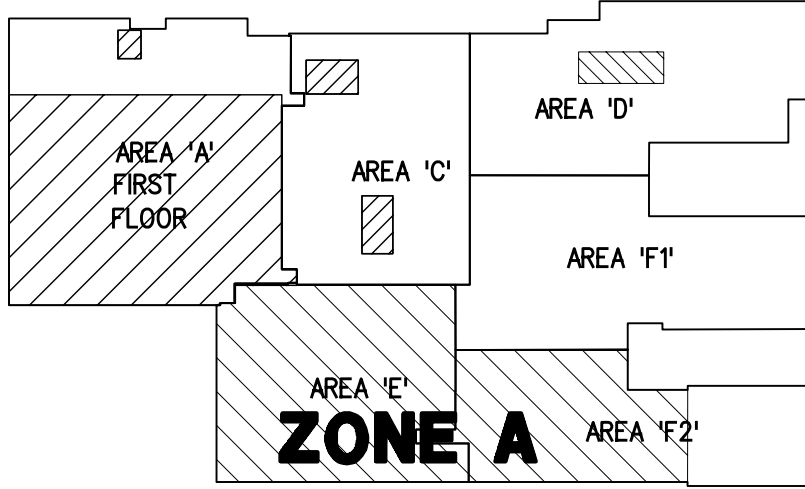
### DEMOLITION LEGEND

- EXISTING WORK TO REMAIN
- EXISTING WORK TO BE REMOVED
- EXISTING WORK TO REMAIN IS SHOWN AS SCREENED LINE WORK AND TEXT. EXISTING WORK TO BE DEMOLISHED IS SHOWN AS BOLD LINE WORK AND TEXT.

### FIRE ALARM EQUIPMENT LEGEND

SYMBOL	MODEL NO.	DESCRIPTION	REMARKS
[FACP]	MXL	PYROTRONICS MAIN ANALOG/ADDRESSABLE PANEL WITH ADDRESSABLE LOOPS, AUDIBLE CIRCUITS AND 24 HR. STANDBY BATTERIES	EXISTING
[RCP]	RCC-1FT	PYROTRONICS REMOTE ANNUNCIATOR/CONTROL PANEL	FLUSH MOUNT AS INDICATED.
[F]	MSI-10B	MANUAL FIRE ALARM STATION, SINGLE ACTION ADDRESSABLE TYPE	FLUSH MOUNT TO 3 1/2" DEEP OUTLET BOX, MOUNT 48" A.F.F.
[S]	FP-11 w/ DB-11	PHOTO ELECTRIC SMOKE DETECTOR, ADDRESSABLE TYPE WITH STANDARD 2 WIRE BASE	MOUNTS TO 4" OCTAGON BOX.
[S]	FP-11 w/ DB-11XPR	PHOTO ELECTRIC SMOKE DETECTOR, ADDRESSABLE TYPE WITH RELAY SURFACE BASE	MOUNTS TO 4" OCTAGON BOX.
[S]	AD-11 XPR w/FP-11	PHOTO ELECTRIC DUCT SMOKE DETECTOR, ADDRESSABLE TYPE WITH RELAY SURFACE BASE	MOUNT AS INDICATED ON DRAWINGS. FINAL LOCATION TO BE DETERMINED IN FIELD.
[T]	FPT-11 w/ DB-11	135° THERMAL DETECTOR, ADDRESSABLE TYPE WITH STANDARD 2 WIRE SURFACE BASE.	MOUNTS TO 4" OCTAGON BOX.
[H]	EXISTING	COMBINATION HORN/STROBE, 24V D/C, (ADA APPROVED)	MOUNTS TO 4" SQ. BY 2 1/8" DEEP BOX. MOUNT 6" BELOW FINISHED CEILING.
[S]	EXISTING	STROBE ONLY UNIT, 24V D/C, 15 INDICATES CP. (ADA APPROVED)	MOUNTS TO STANDARD 4" SQ. BOX. SEE
[I]	TRI-S	ADDRESSABLE INTERFACE MODULE-SINGLE ADDRESS	MOUNTS TO STANDARD 4" SQ. BOX
[I]	TRI-D	ADDRESSABLE INTERFACE MODULE-DUAL ADDRESS	MOUNT IN FTC
[I]	TRI-R	ADDRESSABLE INTERFACE MODULE-SINGLE ADDRESS w/ PROGRAMMABLE RELAY	
[S]	--	24V D/C SPRINKLER SOLENOID	BY OTHERS
[S]	--	SPRINKLER SYSTEM WATERFLOW SWITCH	BY OTHERS
[S]	--	SPRINKLER SYSTEM TAMPER SWITCH	BY OTHERS
[P]	--	PULL BOX WITH COVERPLATE PAINTED RED	4 11/16" DEEP BOX.
[D]	SDH-2D	24V D/C SEMI-FLUSH MOUNTED MAGNETIC DOOR HOLDER	
[C]	--	CONDUIT UP	
[C]	--	CONDUIT DOWN	
[R]	--	RESET SW. INDICATIONG SMOKE DAMPERS ABOVE CEILING	
[E]	--	--	(E) DENOTED EXISTING DEVICE

PROJECT RENOVATE CLINIC BUILDING 1090  
LITTLE ROCK AFB, ARKANSAS  
DRAWING TITLE  
DRAWING APPLIES TO  
CONTRACT DOCUMENTS, SHEETS E0.31  
PROJ. NO. 02209800  
DATE 10/14/03  
DR. BY RWH  
CHK. BY RWH  
SUPPLEMENTAL  
DRAWING NO.  
SD-1  
52 SHEET OF 52



### KEY PLAN

N.T.S.

### SCALE