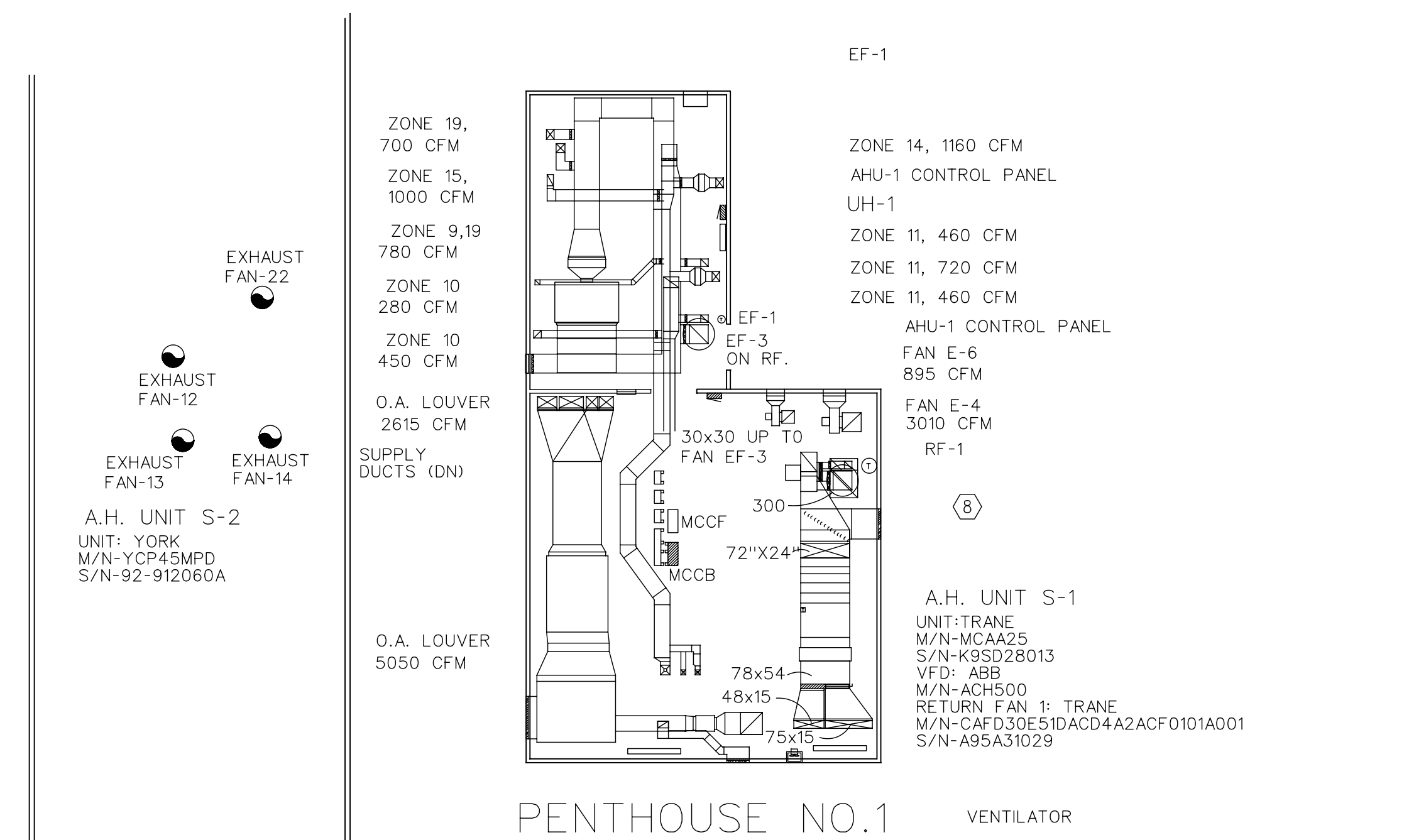


REVISIONS	DATE	DESCRIPTION
1	10/17/2003	ISSUED FOR FINAL WORK PLAN
2	10/17/2003	ISSUED FOR FINAL WORK PLAN
3	10/17/2003	ISSUED FOR FINAL WORK PLAN
4	10/17/2003	ISSUED FOR FINAL WORK PLAN
5	10/17/2003	ISSUED FOR FINAL WORK PLAN
6	10/17/2003	ISSUED FOR FINAL WORK PLAN
7	10/17/2003	ISSUED FOR FINAL WORK PLAN
8	10/17/2003	ISSUED FOR FINAL WORK PLAN
9	10/17/2003	ISSUED FOR FINAL WORK PLAN
10	10/17/2003	ISSUED FOR FINAL WORK PLAN
11	10/17/2003	ISSUED FOR FINAL WORK PLAN
12	10/17/2003	ISSUED FOR FINAL WORK PLAN
13	10/17/2003	ISSUED FOR FINAL WORK PLAN
14	10/17/2003	ISSUED FOR FINAL WORK PLAN
15	10/17/2003	ISSUED FOR FINAL WORK PLAN
16	10/17/2003	ISSUED FOR FINAL WORK PLAN
17	10/17/2003	ISSUED FOR FINAL WORK PLAN
18	10/17/2003	ISSUED FOR FINAL WORK PLAN
19	10/17/2003	ISSUED FOR FINAL WORK PLAN
20	10/17/2003	ISSUED FOR FINAL WORK PLAN
21	10/17/2003	ISSUED FOR FINAL WORK PLAN
22	10/17/2003	ISSUED FOR FINAL WORK PLAN
23	10/17/2003	ISSUED FOR FINAL WORK PLAN
24	10/17/2003	ISSUED FOR FINAL WORK PLAN
25	10/17/2003	ISSUED FOR FINAL WORK PLAN
26	10/17/2003	ISSUED FOR FINAL WORK PLAN
27	10/17/2003	ISSUED FOR FINAL WORK PLAN
28	10/17/2003	ISSUED FOR FINAL WORK PLAN
29	10/17/2003	ISSUED FOR FINAL WORK PLAN
30	10/17/2003	ISSUED FOR FINAL WORK PLAN
31	10/17/2003	ISSUED FOR FINAL WORK PLAN
32	10/17/2003	ISSUED FOR FINAL WORK PLAN
33	10/17/2003	ISSUED FOR FINAL WORK PLAN
34	10/17/2003	ISSUED FOR FINAL WORK PLAN
35	10/17/2003	ISSUED FOR FINAL WORK PLAN
36	10/17/2003	ISSUED FOR FINAL WORK PLAN
37	10/17/2003	ISSUED FOR FINAL WORK PLAN
38	10/17/2003	ISSUED FOR FINAL WORK PLAN
39	10/17/2003	ISSUED FOR FINAL WORK PLAN
40	10/17/2003	ISSUED FOR FINAL WORK PLAN
41	10/17/2003	ISSUED FOR FINAL WORK PLAN
42	10/17/2003	ISSUED FOR FINAL WORK PLAN
43	10/17/2003	ISSUED FOR FINAL WORK PLAN
44	10/17/2003	ISSUED FOR FINAL WORK PLAN
45	10/17/2003	ISSUED FOR FINAL WORK PLAN
46	10/17/2003	ISSUED FOR FINAL WORK PLAN
47	10/17/2003	ISSUED FOR FINAL WORK PLAN
48	10/17/2003	ISSUED FOR FINAL WORK PLAN
49	10/17/2003	ISSUED FOR FINAL WORK PLAN
50	10/17/2003	ISSUED FOR FINAL WORK PLAN

DESIGNED BY: DATE: 08/04/2003	PROJECT NO: 6503	CHECKED BY: DRAWING CODE:	REVIEWED BY: SOLIDATION NUMBER:
DRAWN BY:	PROJECT NO:	CHECKED BY:	REVIEWED BY:
U.S. ARMY ENGINEERING AND SUPPORT CENTER CORPS OF ENGINEERS HUNTSVILLE, ALABAMA	PROJECT NO: 6503	CHECKED BY: DRAWING CODE:	REVIEWED BY: SOLIDATION NUMBER:
EARTHTECH	PROJECT NO: 6503	CHECKED BY: DRAWING CODE:	REVIEWED BY: SOLIDATION NUMBER:

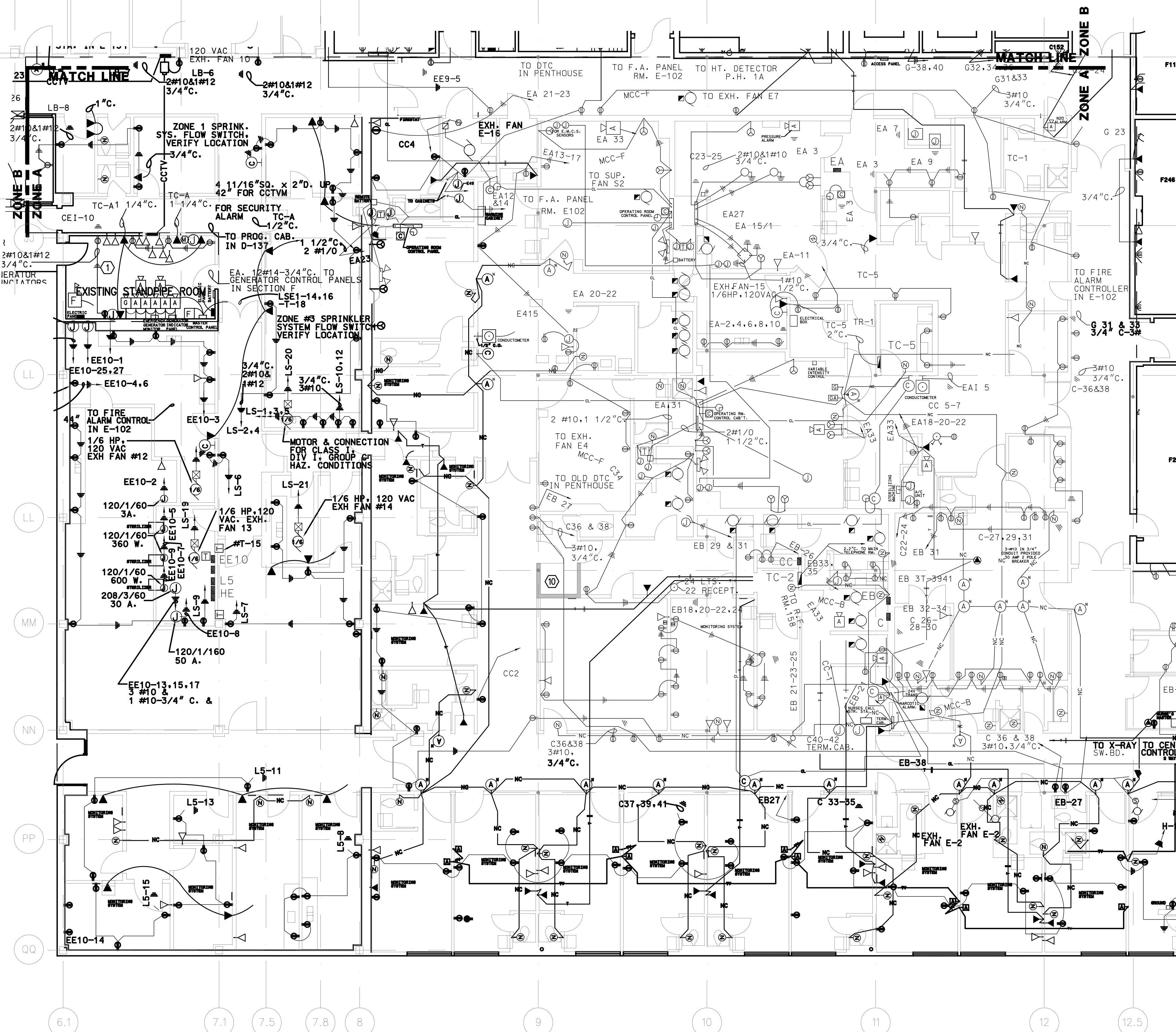
RENOVATE CLINIC
BUILDING 1090
LITTLE ROCK AFB, ARKANSAS
**LEVEL ONE ZONE A
POWER DEMOLITION PLAN
AS-BUILT**

SHEET
REFERENCE
NUMBER:
E0.21
SHEET X OF XX



1 PARTIAL PLAN OF AREA 'C' AND 'D' IN ZONE B

SCALE 1/8" = 1'-0"



2 ZONE A PLAN

SCALE 1/8" = 1'-0"

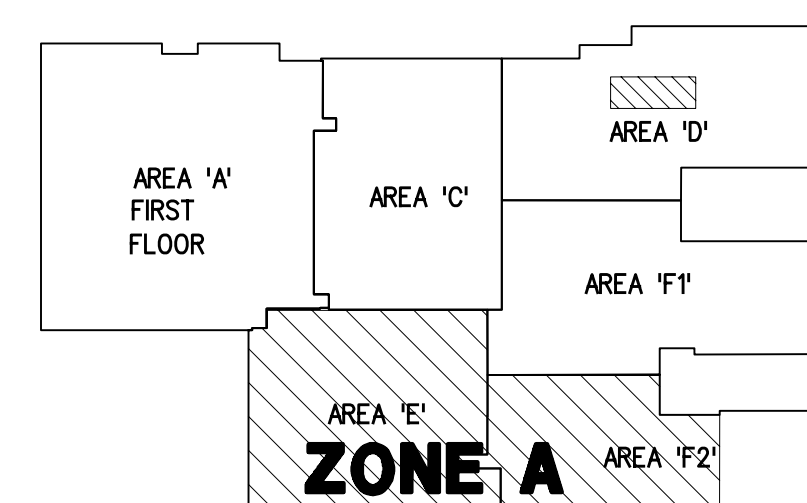
DEMOLITION KEY NOTES

- EXISTING WORK TO REMAIN IS SHOWN AS SCREENED LINE WORK AND TEXT. EXISTING WORK TO BE DEMOLISHED IS SHOWN AS BOLD LINE WORK AND TEXT.
- DISCONNECT AND REMOVE EXISTING RECEPTACLES, DEVICES, CLOCK OUTLETS, NURSE CALL DEVICES, SWITCHES, AND COVER PLATES IN THE AREA OF WORK.
- DISCONNECT AND REMOVE EXISTING BRANCH CIRCUIT CONDUCTORS, CONDUITS, INCLUDING HOME RUNS TO EXISTING PANELBOARDS. CONDUIT INSTALLED IN FLOOR SLAB SHALL BE CUT FLUSH WITH FLOOR, FILLED WITH CONCRETE AND ABANDONED IN PLACE.
- DISCONNECT AND REMOVE EXISTING BRANCH CIRCUIT CONDUCTORS AND CONDUITS BACK TO EXISTING ACTIVE SOURCE WHEN CIRCUIT USED TO RECONNECT NEW WORK.
- REMOVE EXISTING ABANDONED ELECTRICAL CONDUITS AND EQUIPMENT AS IDENTIFIED IN AREA OF WORK AND AS DIRECTED BY GOVERNMENT.
- DISCONNECT AND REMOVE ALL ELECTRICAL SYSTEMS, COMMUNICATION, NURSE-CALL, BOXES, CABLE, CONDUCTORS AND CONDUIT IN THIS AREA.
- TELEVISION CABLE SHALL BE PULLED OUT OF CONDUIT AND COILED FOR EXTENSION TO REMODELED AREA.
- MECHANICAL EQUIPMENT IN PENTHOUSE NO 1 IS TO BE REMOVED. REMOVE ALL ELECTRICAL EQUIPMENT ASSOCIATED WITH THE MECHANICAL VENTILATION EQUIPMENT BACK TO MOTOR CONTROL CENTER. REMOVE MCC B AND MCC F AND FEEDER BACK TO SWITCHGEAR IN ROOM F104
- SEE SHEET E0.11 FOR GENERAL DEMOLITION NOTES.
- EXISTING NETWORK DATA EQUIPMENT THIS ROOM TO BE RELOCATED TO ROOM E166.

DEMOLITION LEGEND

- EXISTING WORK TO REMAIN
 - EXISTING WORK TO BE REMOVED
- EXISTING WORK TO REMAIN IS SHOWN AS SCREENED LINE WORK AND TEXT.
EXISTING WORK TO BE DEMOLISHED IS SHOWN AS BOLD LINE WORK AND TEXT

PROJECT RENOVATE CLINIC BUILDING 1090 LITTLE ROCK AFB, ARKANSAS	DRAWING TITLE
DRAWING APPLIES TO CONTRACT DOCUMENTS, SHEET E0.21	
PROJ. NO. 02209800 DATE 10/14/03	DR. BY: RWH CHK. BY: RWH
EARTHTECH	SUPPLEMENTAL DRAWING NO. SD-1
50	SHEET OF



KEY PLAN
N.T.S.
SCALE