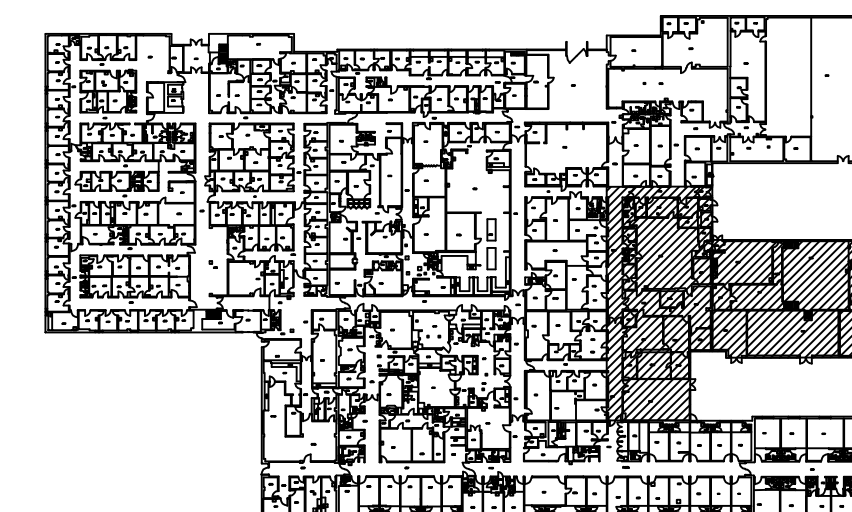
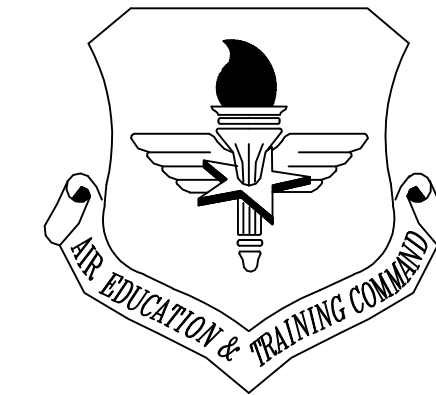


- LEGEND**
- REMOVE POWER RECEPTACLES, ETC., AS INDICATED.
 - EXISTING HVAC EQUIPMENT TO BE REMOVED.
 - EXISTING ELECTRICAL EQUIPMENT AND CIRCUIT TO BE REMOVED.

- KEYED NOTES**
- 1 DISCONNECT AND REMOVE EXISTING EXHAUST FAN. REMOVE ALL ASSOCIATED WIRING AND CONDUIT TO PANEL OF ORIGIN.
 - 2 REMOVE ALL WIRING AND CONDUIT ASSOCIATED WITH ABANDONED CHILLER PUMP.
 - 3 REMOVE ALL WIRING AND CONDUIT ASSOCIATED WITH ABANDONED AIR COMPRESSOR.
 - 4 REMOVE ALL WIRING AND CONDUIT ASSOCIATED WITH ABANDONED SUMP PUMP.
 - 5 REMOVE ALL WIRING AND CONDUIT ASSOCIATED WITH ABANDONED TURBINE PUMP.



KEY PLAN



LITTLE ROCK A.F.B.
ARKANSAS

GARVER ENGINEERS

1010 BATTERY STREET
LITTLE ROCK, ARKANSAS 72202
www.garverengineers.com
(501) 376-3633

CROMWELL
ARCHITECTS ENGINEERS

101 SOUTH SPRING ST
LITTLE ROCK AR 72201
TELEPHONE 501-372-2900
FACSIMILE 501-372-0482

No.	Revision/Issue	Date	BY	APP'D

PROJECT TITLE REPAIR & RENOVATE MEDICAL CLINIC PH IV LITTLE ROCK AIR FORCE BASE JACKSONVILLE, ARKANSAS 100% SUBMITTAL		SHEET TITLE ELECTRICAL POWER DEMOLITION PLAN AREA "B"	
DRAWN BY CAG	TECH REVIEWER CAG	LEAD DESIGNER ECF	PROJECT NUMBER NKAK#06-8006-4
DESIGNED BY	DATE JULY 21, 2008	SHEET E-104	39 OF
SCALE AS NOTED			