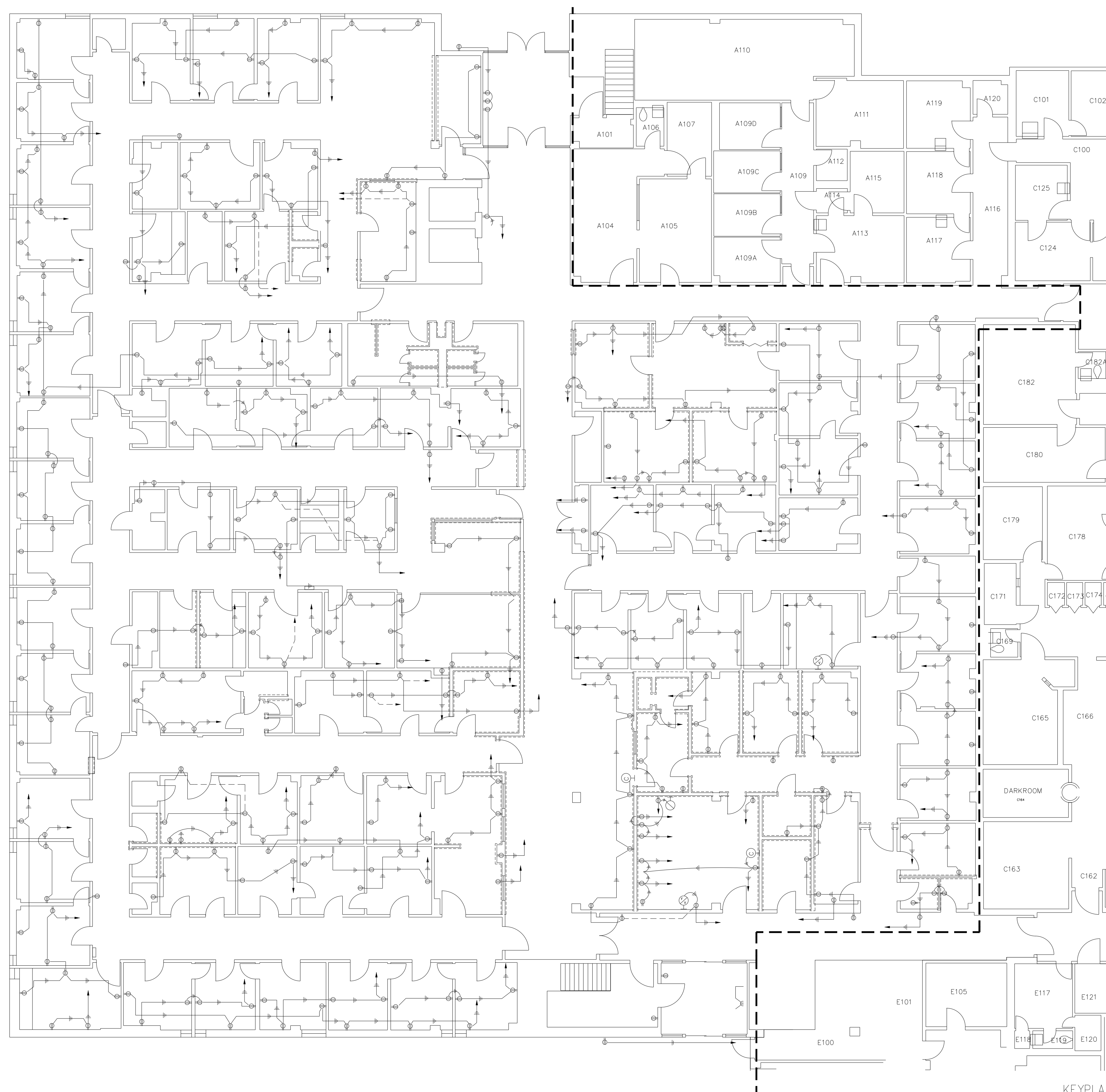


LITTLE ROCK A.F.B.
ARKANSAS

FPM

804 West Curtis Drive, Suite H
Midwest City, OK 73110
phone: 405.869.9212
fax: 405.869.9222
www.fpm-group.com

RECORD
DRAWINGS
MARCH 2007



DEMOLITION LEGEND

- EXISTING WALLS/PARTITIONS TO REMAIN
- EXISTING WALLS/PARTITIONS BEING REMOVED
- EXISTING OUTLETS AND ASSOCIATED WIRING TO REMAIN.
- EXISTING OUTLETS AND ASSOCIATED WIRING TO BE REMOVED.
- NEW WIRING REQUIRED TO MAINTAIN CONTINUITY OF EXISTING CIRCUITS BROKEN BY OUTLET REMOVAL.

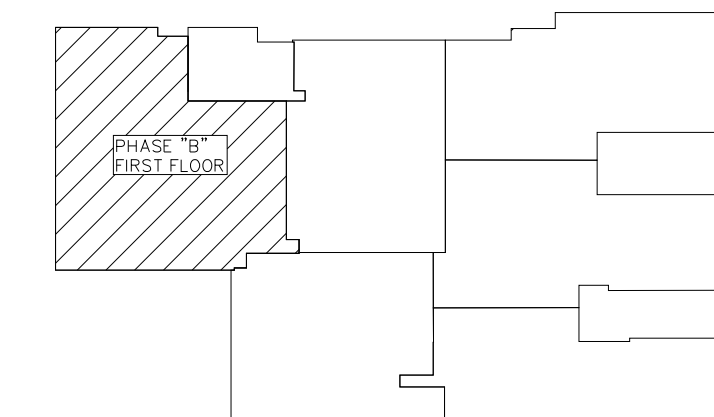
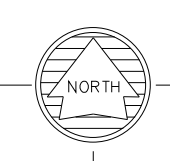
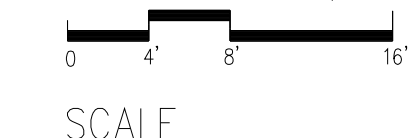
DRAWING NOTES:

- REMOVE EXISTING RECEPTACLES AND ASSOCIATED OUTLET BOXES AND WIRING, WHICH ARE LOCATED IN WALLS/PARTITIONS BEING REMOVED, AS SHOWN ON PLAN.
- PROVIDE NEW JUNCTION BOXES AND "JUMPER" WIRING TO MAINTAIN CONTINUITY OF EXISTING CIRCUITS BROKEN BY RECEPTACLE REMOVAL, WHETHER SHOWN ON PLANS OR NOT.
- THE BRANCH CIRCUIT WIRING SHOWN HAS BEEN COPIED FROM VARIOUS AS-BUILT DRAWINGS AND HAS NOT BEEN VERIFIED.

1 POWER DEMOLITION PLAN

SCALE: 1/8" = 1'-0"

KEYPLAN
N.T.S.



No.	Revision/Issue	Date	BY	APP'D

PROJECT TITLE		SHEET TITLE	
REPAIR MEDICAL CENTER PH B LITTLE ROCK AFB, ARKANSAS		POWER DEMOLITION PLAN	
DRAWN BY	LEAD DESIGNER		
RJR	AM		
TECH REVIEWER	PROJECT NUMBER		
KF	NKAK 05-8004A		
DESIGNED BY	SHEET		
KF	E0.21		
DATE			
1-21-08			
SCALE	32 OF 39		
1/8"=1"			