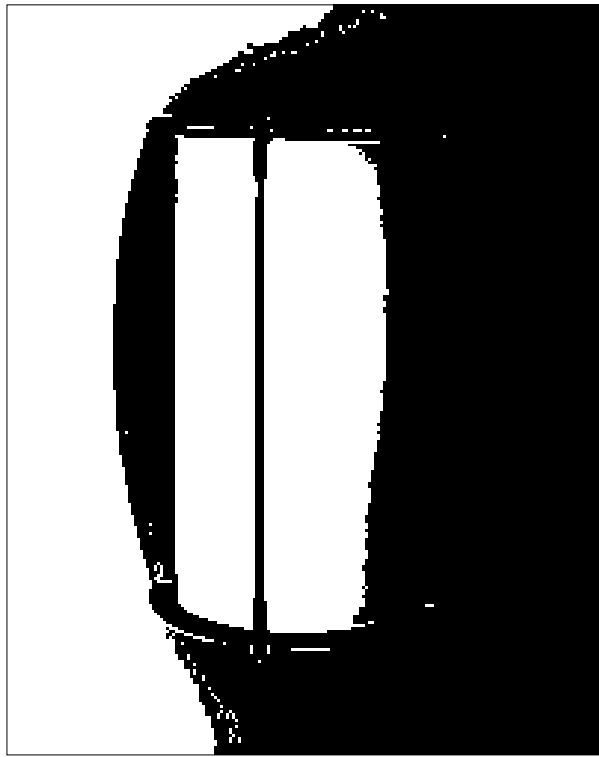


TYPE: F10

FEATURES:
LAMP TYPE: ONE 32W TRIPLE TUBE FLUORESCENT
PROFILE: 4" SOLID BRASS WALL SCONCE, ADA
COMPLIANT, SATIN NICKEL FINISH
SHIELDING: ACRYLIC RESERIE GOLD LENS
BALLAST: ELECTRONIC
NOM. DIMENSION: 9 5/8" w x 13 1/4" x 4" DEEP
ELECTRICAL: 277 VOLT



WALL SCONCE

NOT TO SCALE

TYPE: F5 (F15 & F16 SIMILAR)

FEATURES:
LAMP TYPE: F32T8/75CRI
PROFILE: 2 LAMP
SHIELDING: METAL ROUND HOLES
BALLAST: ELECTRONIC <10% THD
NOM. DIMENSION: 12" w x 48" L x 6" deep

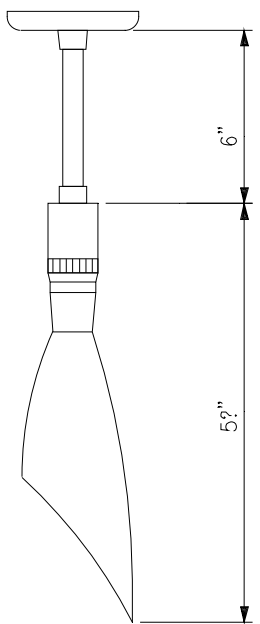
GENERAL DESCRIPTION
HOUSING: COLD ROLLED STEEL, FLANGE TO
COORDINATE WITH CEILING; EXTRUDED
ALUMINUM LENS FRAME, HINGED REMOVAL
AND SPRING-LOADED CATCHES
MOUNTING: RECESSED INTO STANDARD NON-METRIC GRID
REFLECTORS: REFLECTANCE MATTE WHITE
ELECTRICAL: 277 VOLT
EFFICIENCY: 80%

RECESSED DIRECT/INDIRECT 1'x4' FLUORESCENT TROFFER

NOT TO SCALE

TYPE: F18

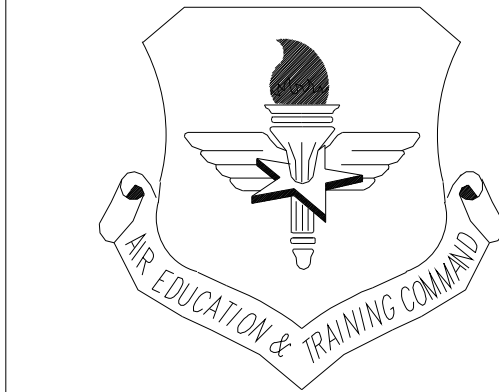
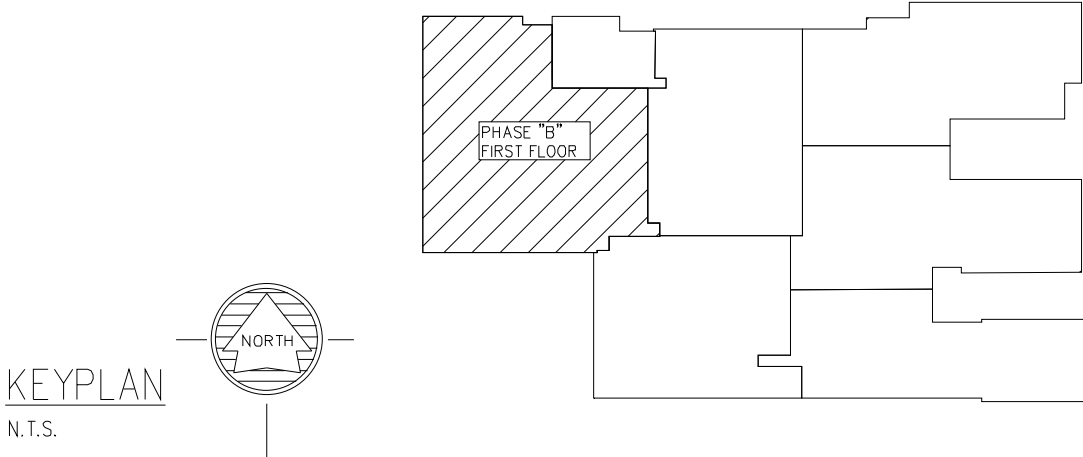
FEATURES:
LAMP TYPE: 50 WATT 12V BI-PIN
PROFILE: 1 LAMP
SHIELDING: GLASS WHITE MATTE
FINISH: MATTE CHROME
BALLAST: 75 WATT TRANSFORMER 277/12 VOLT IN CANOPY
NOM. DIMENSION: 5 3/4" L x 6" EXTENSION



SHORT STEM DOWNLIGHT FIXTURE

NOT TO SCALE

LIGHTING FIXTURE SCHEDULE						
FIXTURE MARK	LAMPS			FIXTURE VOLTAGE	MOUNTING	REMARKS
	TYPE	NO.	WATTS.			
F1	F32T8 /75CRI	3	32	277	LAY-IN	2'x4', FLUORESCENT STATIC TROFFER, SHIELDING: 0.125" PATTERN IS 12 ACRYLIC PRISMATIC LENS BALLAST: ELECTRONIC <10% THD
*F2	F32T8 /75CRI	2	32	277	LAY-IN	2'x4', FLUORESCENT STATIC TROFFER, SHIELDING: 3" DEEP 12 CELL SEMI-SPECULAR LOW IRIDESCENT PARABOLIC LOUVER BALLAST: ELECTRONIC <10% THD
F3	F32T8 /75CRI	3	32	277	LAY-IN	2'x4', FLUORESCENT STATIC TROFFER, SHIELDING: 3" DEEP 18 CELL SEMI-SPECULAR LOW IRIDESCENT PARABOLIC LOUVER BALLAST: ELECTRONIC <10% THD
*F4	CF40-TT5	2	40	277	LAY-IN	2'x2' - DIRECT/INDIRECT - 52% OPEN PERFORATED METAL WITH WHITE ACRYLIC DIFFUSER BALLAST: ELECTRONIC <10% THD LITHUANIA - AVANTE OR EQUAL
*F5	F32T8 /75CRI	2	32	277	LAY-IN	1'x4' DIRECT/INDIRECT WALL LIGHTING ASYMMETRIC DISTRIBUTION - 52% OPEN PERFORATED METAL WITH WHITE ACRYLIC DIFFUSER BALLAST: ELECTRONIC < 10% THD LITHUANIA - AVANTE OR EQUAL
F6	T5	2	14/21/28	277	COVE	STAGGERED STRIP 2 LAMP T5 LAMPS OF VARYING LENGTHS TO FILL REQUIRED TOILET ROOM COVE END TO END USING MULTIPLE FIXTURES: METALUX SML214/221/228-ZLT-277-EBT
F7	100A 21/IF	1	100	120	RECESSED	CLEAR ALZAK SEMI-SPECULAR W/FLANGE WHITE PAINTED
F8	F32DTT/RS	1	32	277	RECESSED	6" DIA. RECESSED COMPACT FLUORESCENT DOWN LIGHT. SEMI-SPECULAR ALZAK LOW IRIDESCENT WITH WHITE TRIM FLANGE
F10	F32TTT	1	32	277	WALL	4" SOLID BRASS WALL SCONCE, ADA COMPLIANT, SATIN NICKEL FINISH W/REVERIE GOLD LENS "IMAGO" NESSEN - NW680 -IRG OR EQUAL
F14	F23T8/75CRI	1	32	277	SURFACE	SURFACE MOUNTED PRISMATIC ACRYLIC WRAPAROUND LENS BALLAST: ELECTRONIC <10% THD
F18	50W-MR16	1	50	277/12	PENDANT	PENDANT DECORATIVE LIGHTING - BALLAST CANOPY, EXTENSION AND GLASS FIXTURE, BRUCK OR EQUAL
F22	INCLUDED HALOGEN	1	-	120	CEILING	EXAM LIGHT ON ADJUSTABLE ARM, AMSCO/STERIS EXAMINER 10 EXAMINATION LIGHTING SYSTEM, PROVIDE WITH ALL REQUIRED MOUNTING SUPPORT HARDWARE - LIGHT INSTENSITY CONTROL - DUAL SWING ARM
X1	LED	-	<1	120/277	UNIVERSAL	THIN PROFILE CAST METAL FRAME WITH CAST ALUMINUM FACEPLATE, SATIN FINISH, 6 INCH HIGH RED LETTERS, COMPLETE WITH MULTIPONT LED LIGHT SOURCE DESIGNED FOR EVEN ILLUMINATION OF LETTERS AND ARROWS. SINGLE CIRCUIT OPERATION WITH SEALED BATTERY AND CHARGING CIRCUIT. ALL EXIT SIGNS SHALL HAVE SELF DIAGNOSTIC CIRCUITRY BUILT IN THAT MEETS THE LIFE SAFETY CODE REQUIREMENTS AND SHALL BE CONNECTED TO THE BUILDINGS FIRE ALARM. DUAL-LITE MODEL SCSRWNEI-FAP OR APPROVED EQUAL.
X2	LED	-	<1	120/277	UNIVERSAL	THIN PROFILE CAST METAL FRAME WITH CAST ALUMINUM FACE PLATE, SATIN FINISH, 6 INCH HIGH RED LETTERS, COMPLETE WITH MULTIPONT LED LIGHT SOURCE DESIGNED FOR EVEN ILLUMINATION OF LETTERS AND ARROWS. SINGLE CIRCUIT OPERATION WITH SEALED BATTERY AND CHARGING CIRCUIT. ALL EXIT SIGNS SHALL HAVE SELF DIAGNOSTIC CIRCUITRY BUILT IN THAT MEETS THE LIFE SAFETY CODE REQUIREMENTS AND SHALL BE CONNECTED TO THE BUILDINGS FIRE ALARM. DUAL-LITE MODEL SCSRWNEI-FAP OR APPROVED EQUAL.
*XF2	-----	?	32	277	LAY-IN	BODINE - GEN1 - 2000 LUMEN, 5 MINUTES BATTERY PACK UNIT INSTALL IN ALL FIXTURES INDICATED WITH DIAGONAL LINE THROUGH FIXTURE SYMBOL *
F23	F32T8/75CRI	4	32	277	LAY-IN	2'x4', FLUORESCENT STATIC TROFFER, SHIELDING: 0.125" PATTERN IS 12 ACRYLIC PRISMATIC LENS BALLAST: ELECTRONIC <10% THD
F24	F32T8/75CRI	2	32	277	RECESSED	1'x4', FLUORESCENT RECESSED, SHIELDING: 0.125" PATTERN IS 12 ACRYLIC PRISMATIC LENS BALLAST: ELECTRONIC <10% THD
F25	F17T8/75CRI	2	17	277	RECESSED	1'x2', FLUORESCENT RECESSED, SHIELDING: 0.125" PATTERN IS 12 ACRYLIC PRISMATIC LENS BALLAST: ELECTRONIC <10% THD
F26	F17T8/75CRI	2	32	277	LAY-IN	2'x2', FLUORESCENT STATIC TROFFER, SHIELDING: 0.125" PATTERN IS 12 ACRYLIC PRISMATIC LENS BALLAST: ELECTRONIC <10% THD



LITTLE ROCK A.F.B.
ARKANSAS

FPM

804 West Curtis Drive, Suite H
Midwest City, OK 73110
phone: 405.869.9212
fax: 405.869.9222
www.fpm-group.com

RECORD
DRAWINGS
MARCH 2007

							APP'D
							BY
							Date
							Revision/Issue
							No.

PROJECT TITLE REPAIR MEDICAL CENTER PH B LITTLE ROCK AFB, ARKANSAS	DRAWN BY RJR		LEAD DESIGNER AM	
	TECH REVIEWER KF		PROJECT NUMBER NKA05-8004A	
	DESIGNED BY KF		SHEET	
	DATE 1-21-08		E3.11	
	SCALE N/A		38 OF 39	