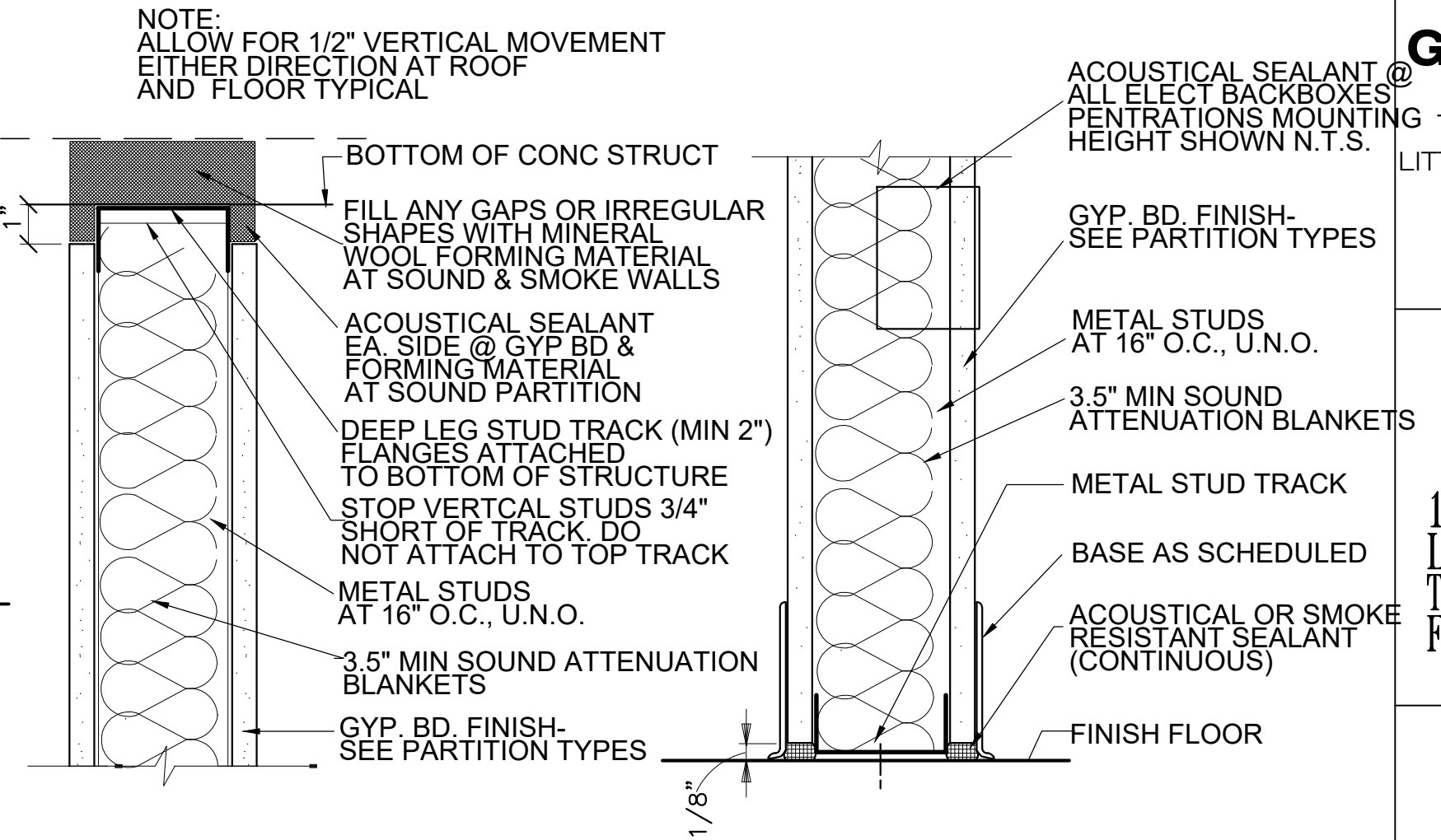
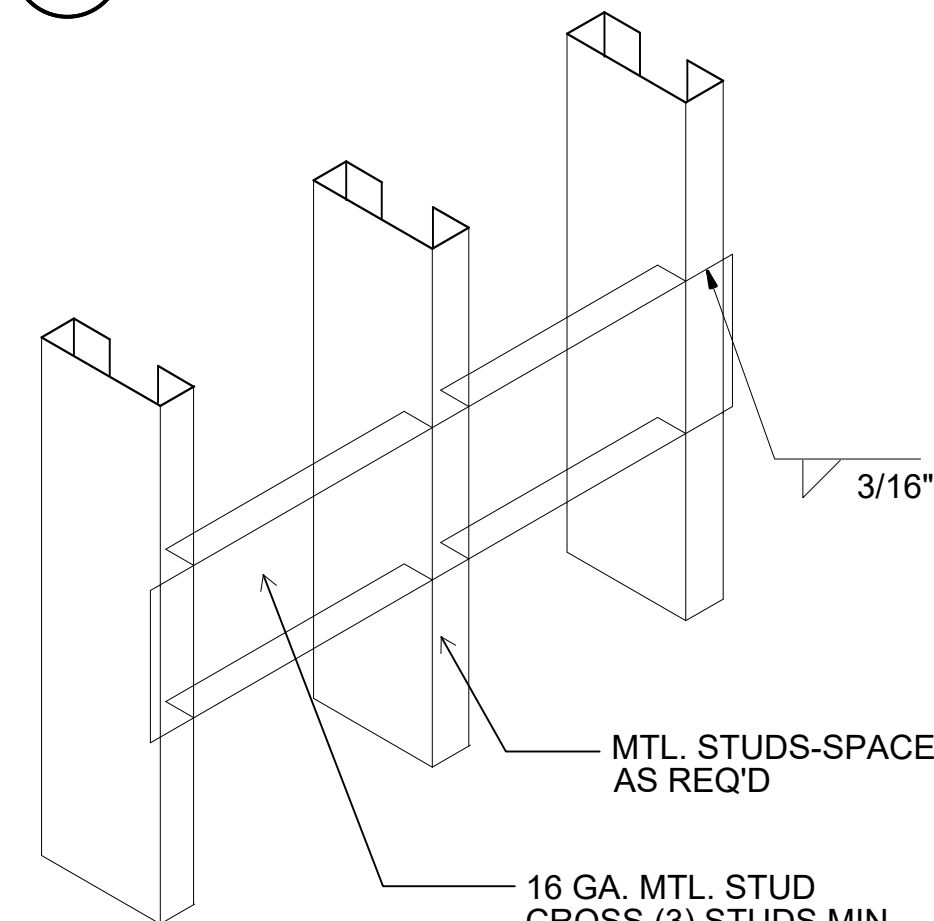


NOTE: METAL STUDS FOR INTERIOR PARTITIONS SHALL BE MIN SIZE AS INDICATED BELOW UNLESS NOTED OTHERWISE. FABRICATOR SHALL SIZE FOR EXACT CONDITIONS & SUBMIT SHOP DRAWINGS FOR APPROVAL.

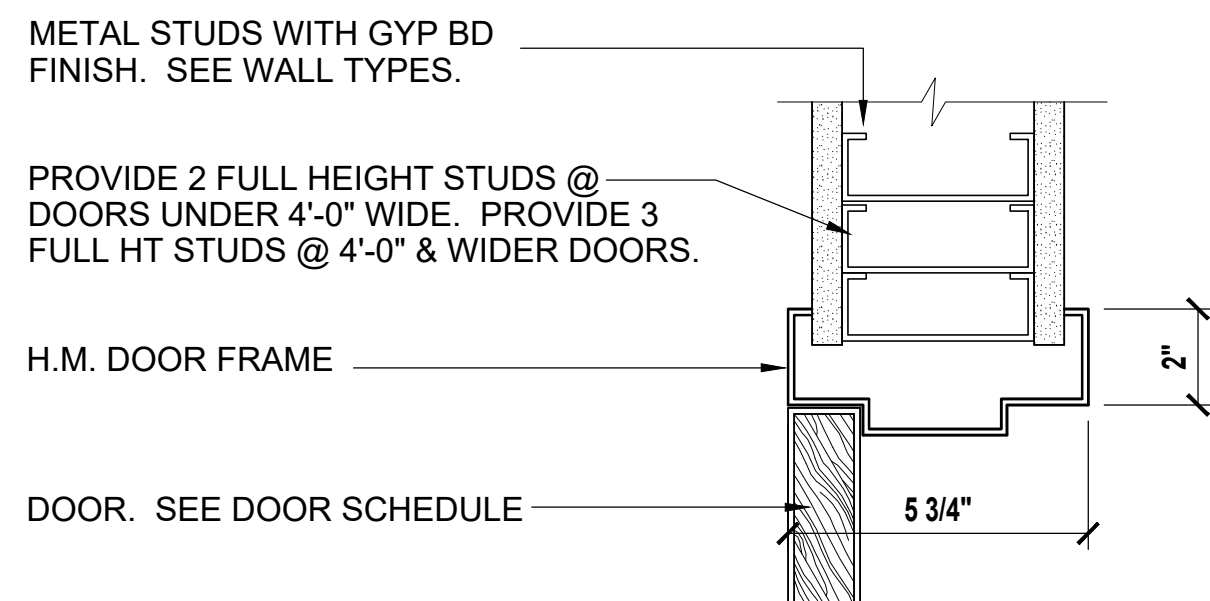
UNBRACED HEIGHT	MIN. METAL STUD SIZE & SPACING
LESS THAN 10'-0"	25 GA. 3 5/8" AT 16" O.C.
10'-0" TO 15'-0"	20 GA. 3 5/8" AT 16" O.C.
15'-0" TO 20'-0"	18 GA. 6" AT 16" O.C.
GREATER THAN 20'-0"	18 GA. 6" AT 12" O.C.



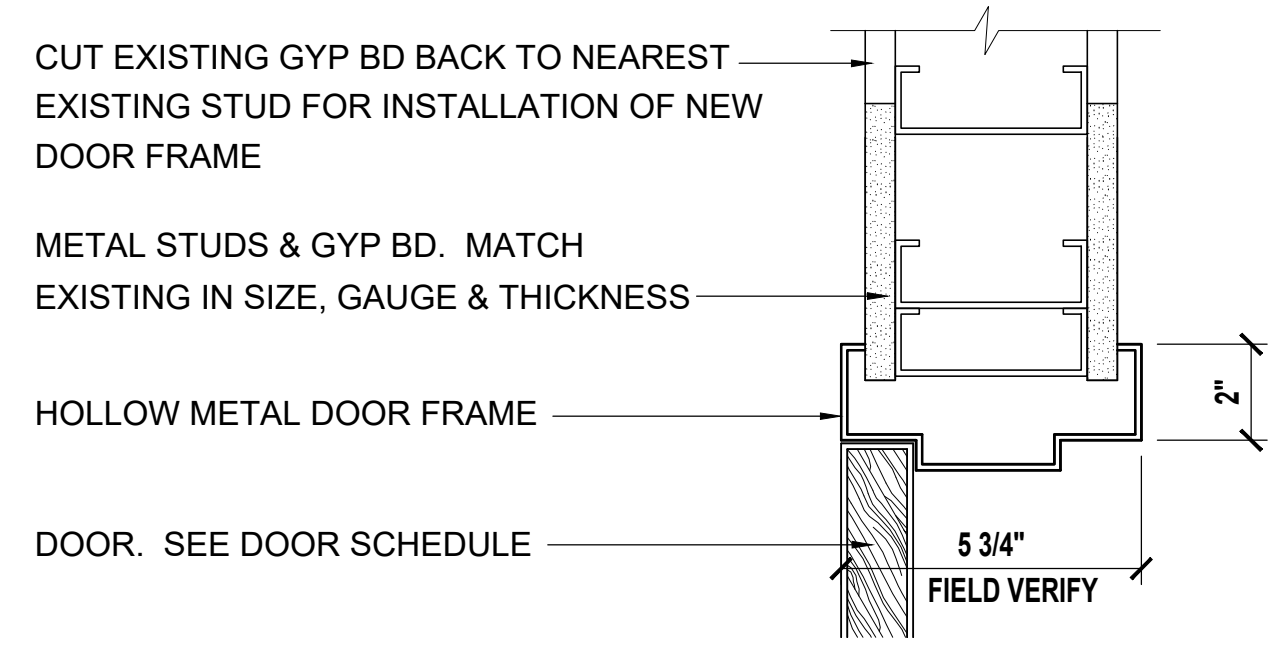
1 WALL TYPES
N.T.S.



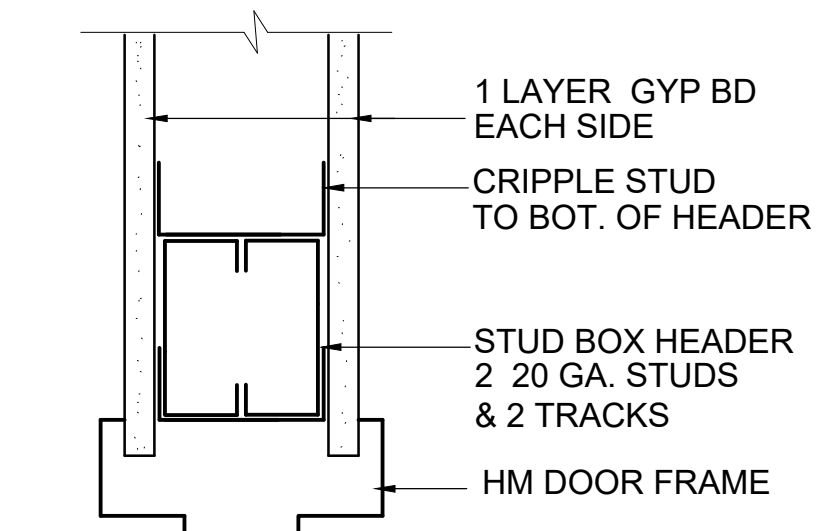
4 WALL BACKING
3"=1'-0"



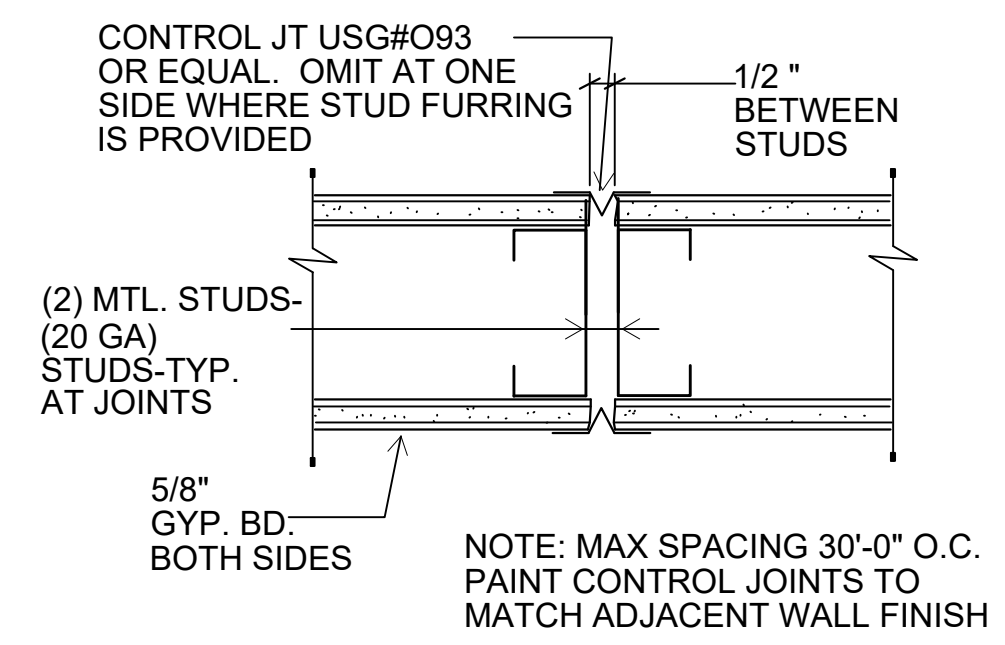
5 H.M. DOOR JAMB @ NEW WALL- HEAD SIM
3"=1'-0"



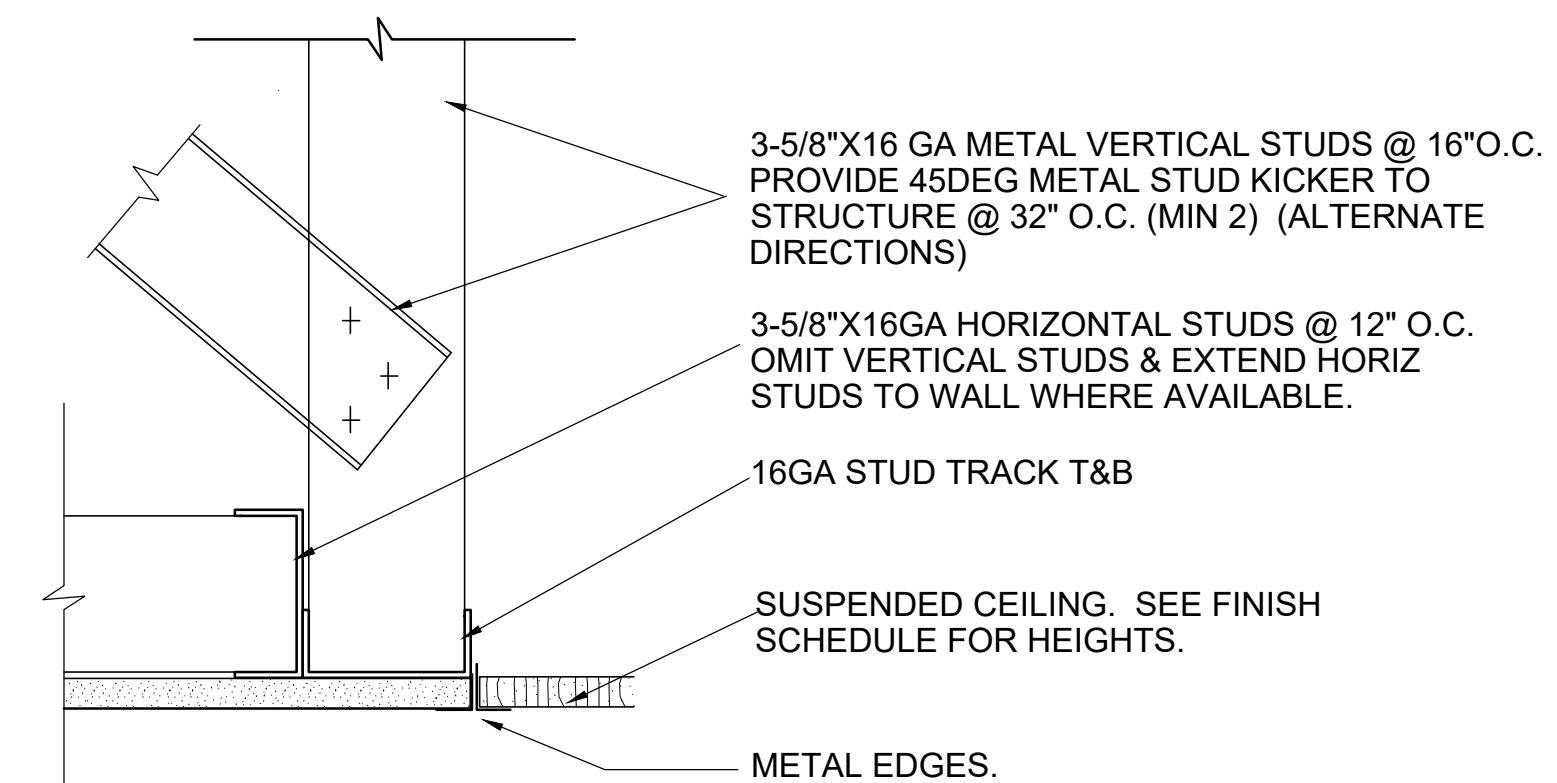
6 H.M. DOOR JAMB @ EXISTING WALL-HEAD SIM
3"=1'-0"



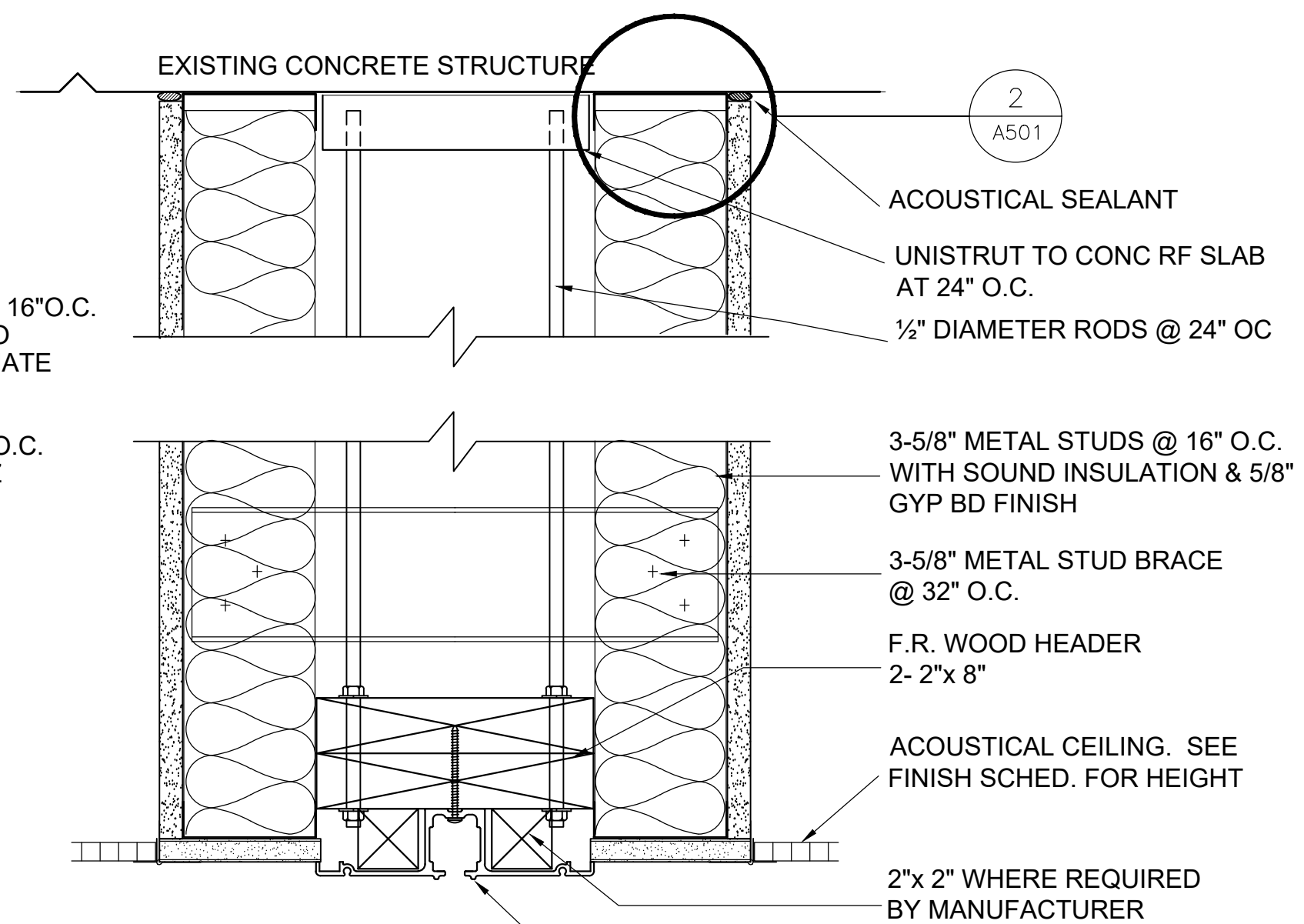
7 H.M. DOOR HEAD @ 4'-0"/ WIDER
3"=1'-0"



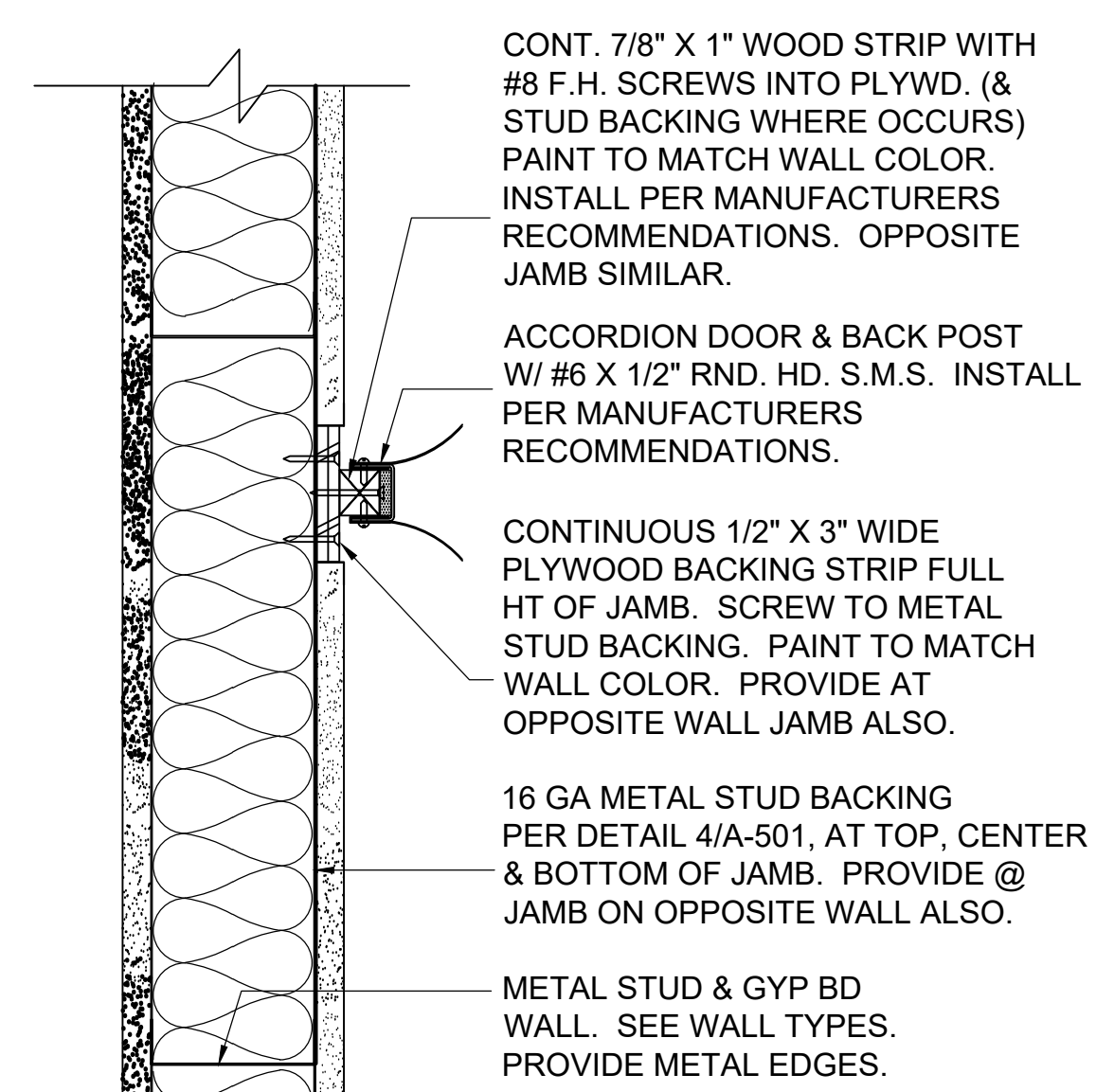
8 CONTROL JT @ INTERIOR WALLS
3"=1'-0"



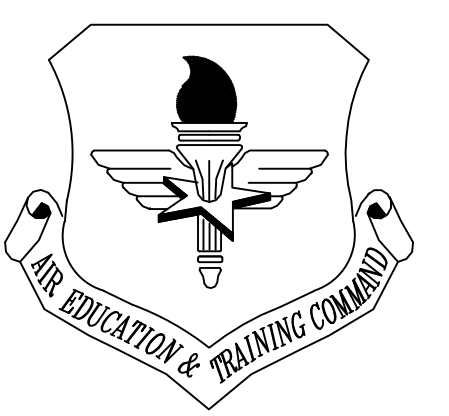
9 GYP BD CEILING TRANSITION
3"=1'-0"



10 ACCORDIAN DOOR HEAD
3"=1'-0"



11 ACCORDIAN DOOR JAMB
3"=1'-0"



LITTLE ROCK A.F.B.
ARKANSAS

GARVER ENGINEERS

1010 BATTERY STREET
LITTLE ROCK, ARKANSAS 72202
www.garverengineers.com
(501) 376-3633

CROMWELL
ARCHITECTS ENGINEERS

101 SOUTH SPRING ST
LITTLE ROCK AR 72201
TELEPHONE 501-372-2900
FACSIMILE 501-372-0482

No.	Revision/Issue	Date	By	App'D

PROJECT TITLE REPAIR & RENOVATE MEDICAL CLINIC PH V LITTLE ROCK AIR FORCE BASE JACKSONVILLE, ARKANSAS 100% SUBMITTAL	SHEET TITLE WALL TYPES & INTERIOR DETAILS	DRAWN BY P.J.L.	LEAD DESIGNER K. TAYLOR
		TECH REVIEWER P.J.L.	PROJECT NUMBER NKAK#06-8006-5
		DESIGNED BY P. LEDFORD	SHEET A-501
		DATE 7 MAY 2008	SCALE 3"=1'-0"