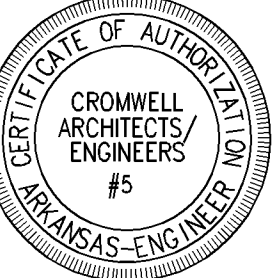




LITTLE ROCK A.F.B.
ARKANSAS

1010 Battery St.
Little Rock, AR
72202
501-376-3633
www.GarverUSA.com

CROMWELL
ARCHITECTS ENGINEERS
101 SOUTH SPRING ST
LITTLE ROCK AR 72201
TELEPHONE 501-372-2900
FACSIMILE 501-372-0482



No.	Revision/Issue	Date	BY	APP'D

PROJECT TITLE
REPAIR & RENOVATE MED. CLINIC PH IV A
LITTLE ROCK AIR FORCE BASE
JACKSONVILLE, ARKANSAS

SHEET TITLE
**ENLARGED FLOOR PLAN &
ELEVATIONS @ COUNTER**

DRAWN BY JKL	LEAD DESIGNER K. TAYLOR
TECH. REVIEWER JKL	PROJECT NUMBER NKAK 06-8006 4A
DESIGNED BY JOHN K. LAI	SHEET A-104
DATE 13 MAY 2009	SCALE

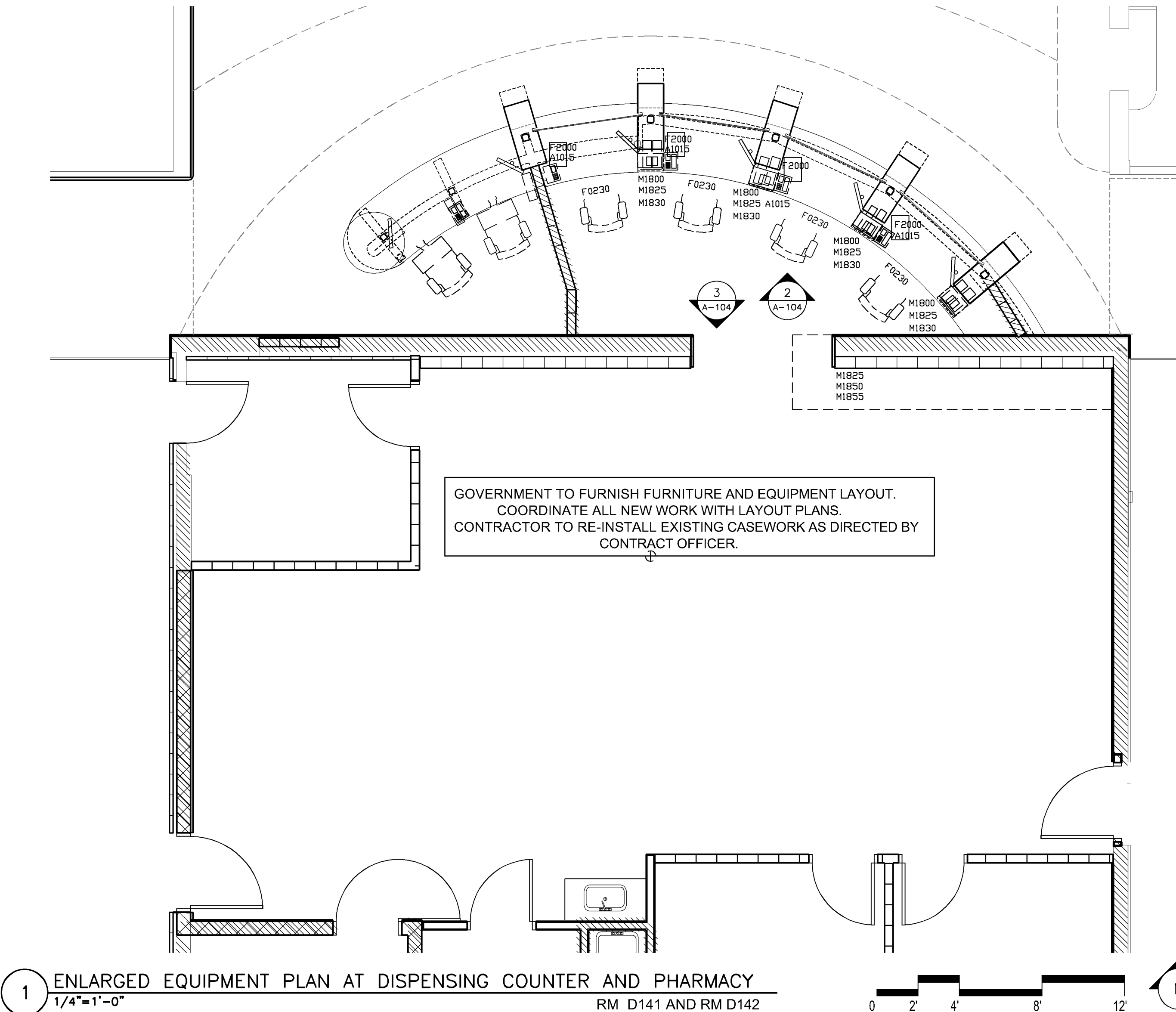
EQUIPMENT IN PHARMACY DISPENSING D141: (EQUIPMENT N.I.C. - G.F.G.I.)

- A1015 TELEPHONE, DESK, MULTIPLE LINE
- F0230 CHAIR, DRAFTING, ROTARY
- F2000 BASKET, WASTEPAPER, RECTANGULAR
- F2550 SHREDDER, PAPER HEAVY DUTY
- F3200 CLOCK BATTERY
- M1800 COMPUTER, MICROPORCESSING, W/ FLAT PANEL MONITOR
- M1825 PRINTER, COMPUTER
- M1830 PRINTER, LABEL, PHARMACY
- M1850 TYPEWRITER, ELECTRIC
- M1855 FACSIMILE MACHINE

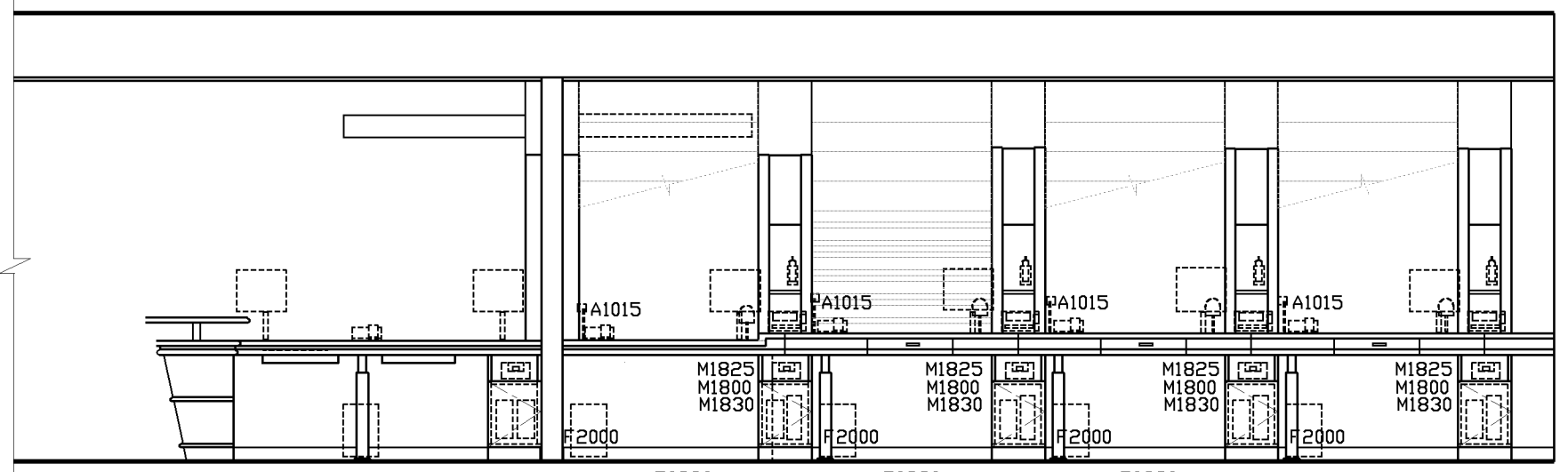
EQUIPMENT IN PHARMACY D142: (EQUIPMENT N.I.C. - G.F.G.I.)

- A1015 TELEPHONE, DESK, MULTIPLE LINE
- A1095 MESSAGE BOARD, DIGITAL
- A5075 DISPENSER, SOAP, DISPOSABLE
- A5080 DISPENSER, PAPER TOWEL,SS, SURFACE MTD
- E0667 PHARMACY DISPENSING & STORAGE LOW VOLUME
- F0230 CHAIR, DRAFTING, ROTARY
- F0280 CHAIR, SWIVEL, LOW BACK
- F2000 BASKET, WASTEPAPER, RECTANGULAR, 18Hx10Wx14 L
- F2550 SHREDDER, PAPER HEAVY DUTY
- F3200 CLOCK BATTERY
- L1950 DIMINERALIZER, WATER, FLOOR MOUNTED 1/2-3 GPM
- M1800 COMPUTER, MICROPORCESSING, W/ FLAT PANEL MONITOR
- M1825 PRINTER, COMPUTER
- M1830 PRINTER, LABEL, PHARMACY
- M1850 TYPEWRITER, ELECTRIC
- M1855 FACSIMILE MACHINE
- M7260 COUNTER/DISPENSER, PILL/TABLET COUNTER, PILL/TABLET, AUTOMATED, COUNTER MOUNTED

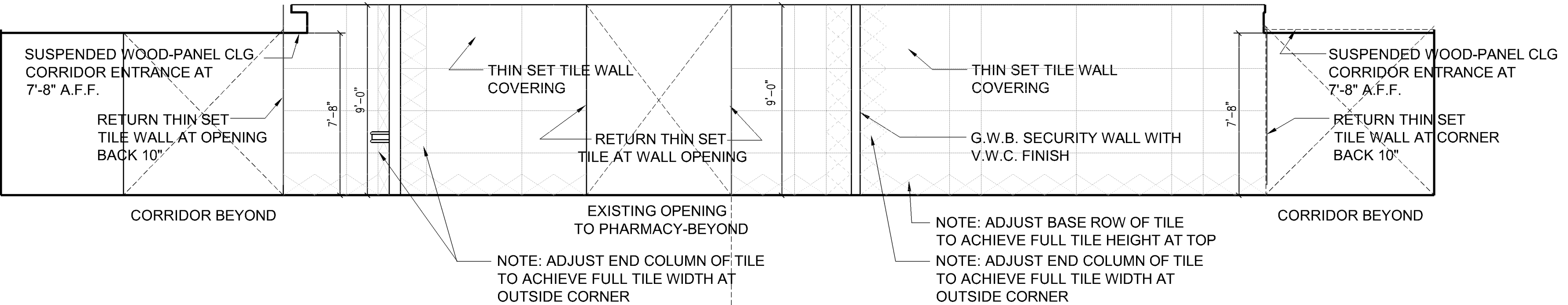
GOVERNMENT TO FURNISH FURNITURE AND EQUIPMENT LAYOUT.
COORDINATE ALL NEW WORK WITH LAYOUT PLANS.
CONTRACTOR TO RE-INSTALL EXISTING CASEWORK AS DIRECTED BY
CONTRACT OFFICER.



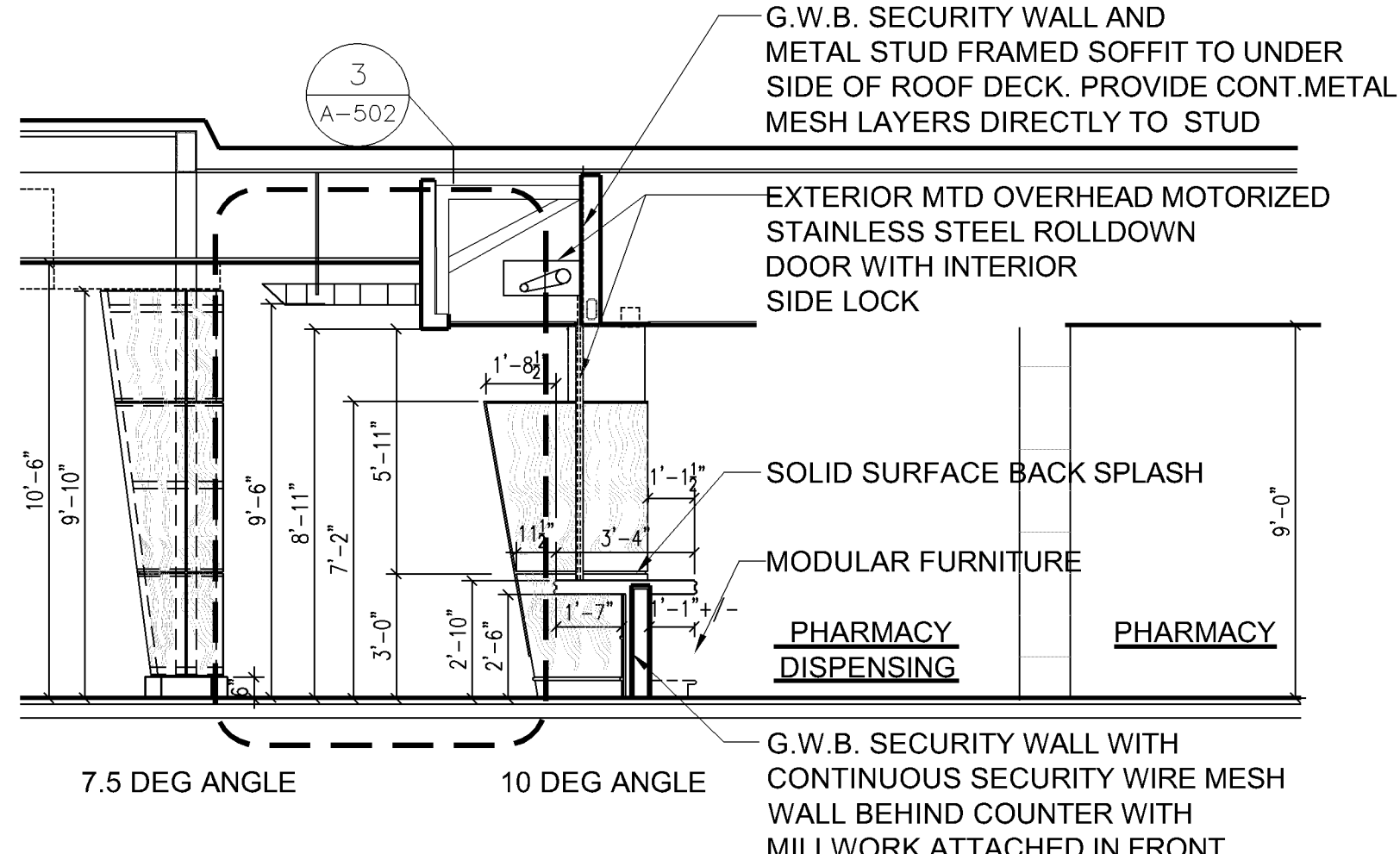
1 ENLARGED EQUIPMENT PLAN AT DISPENSING COUNTER AND PHARMACY
1/4"=1'-0" RM D141 AND RM D142



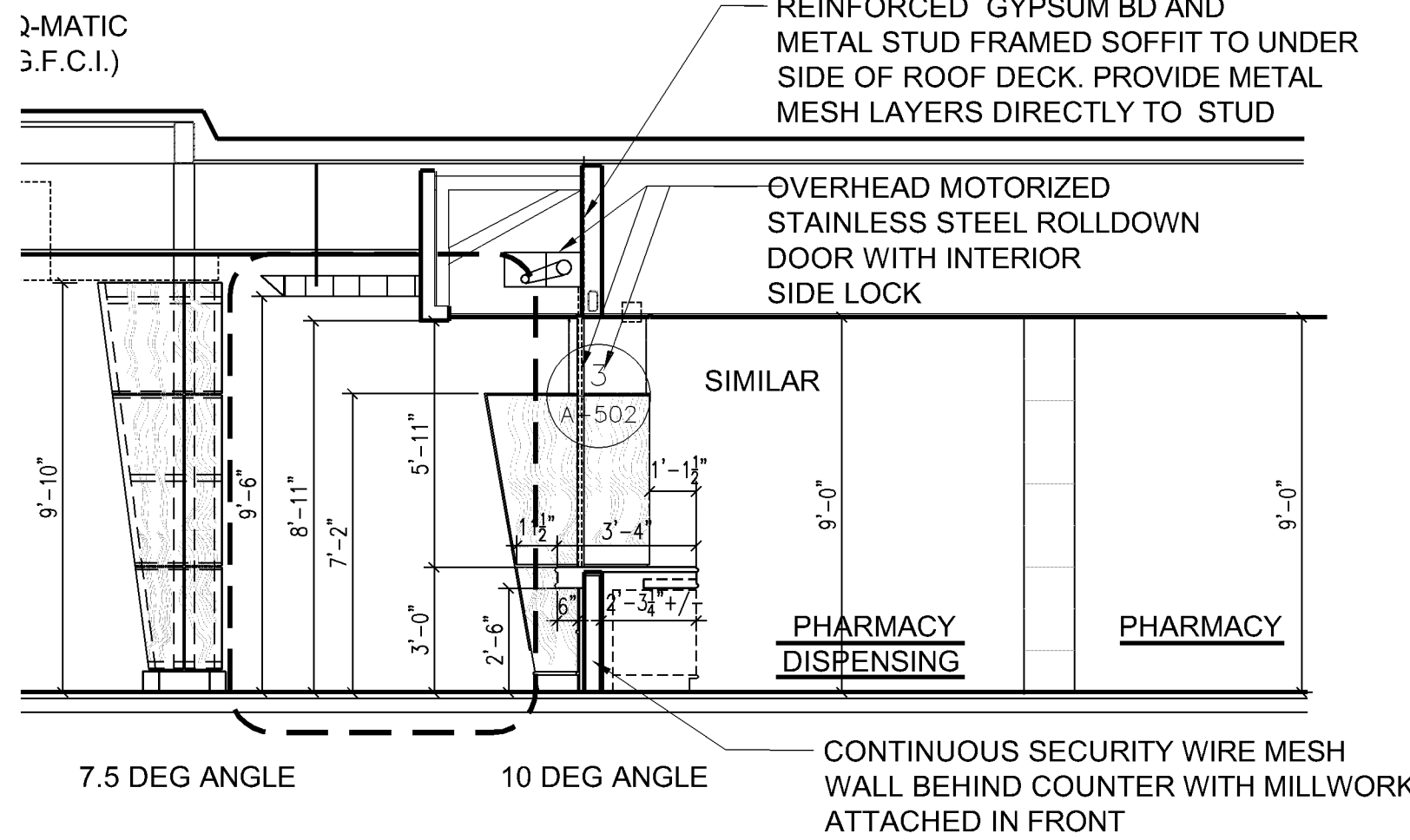
2 REAR ELEVATION EQUIPMENT @ RECEPTION AND DISPENSING COUNTER ALONG ARC LENGTH
1/4"=1'-0" RM D141



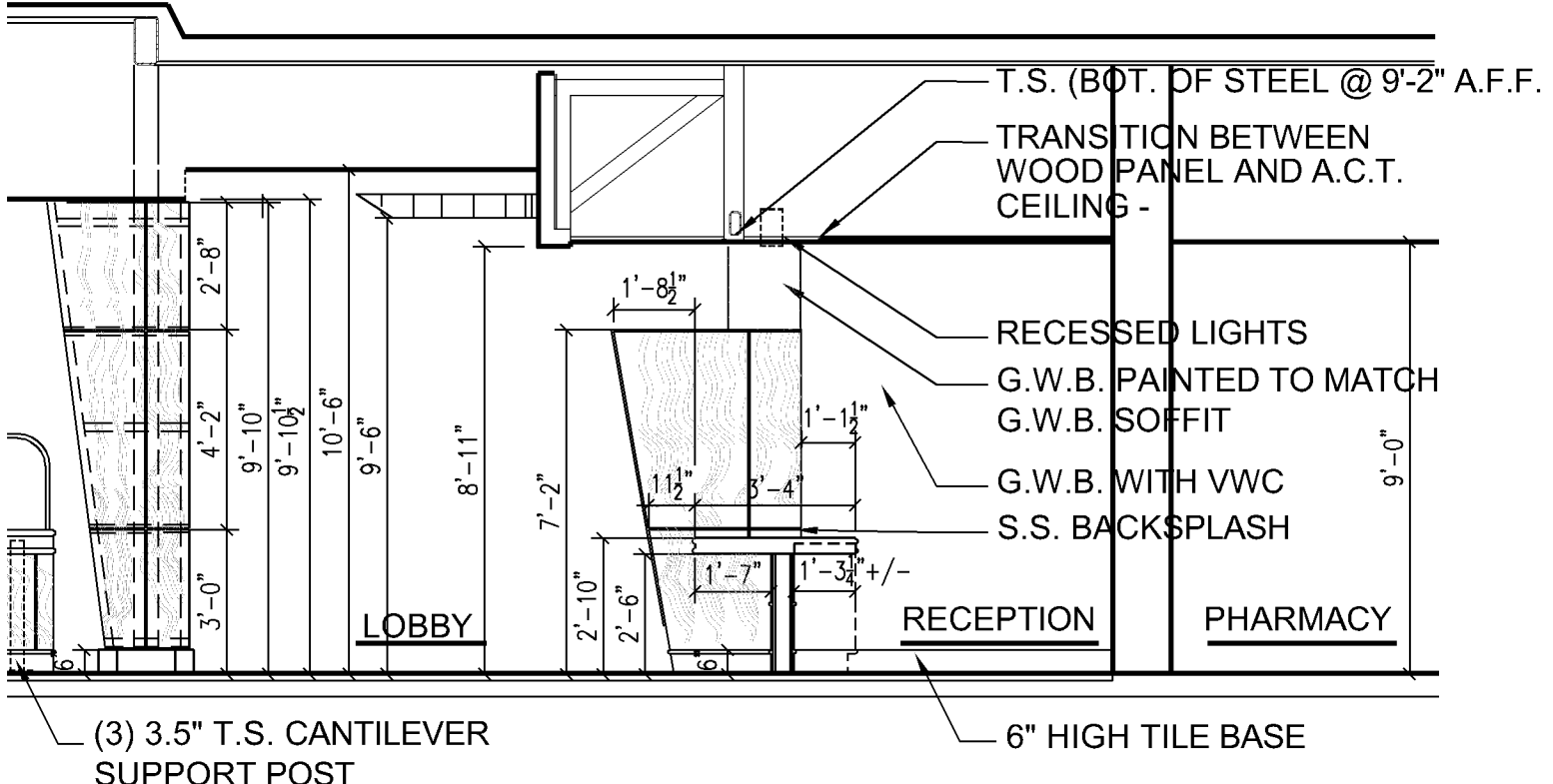
3 SOUTH WALL ELEVATION AT DISPENSING AND RECEPTION COUNTER
1/4"=1'-0" RM D141



4 CROSS SECTION AT ADA DISPENSING COUNTER
1/4"=1'-0" RM D101 & D141



5 CROSS SECTION AT DISPENSING COUNTER
1/4"=1'-0" RM D101 & D141



6 CROSS SECTION AT RECEPTION COUNTER
1/4"=1'-0" RM D141 & D101