

KEYED TOILET ACCESSORIES:

GB1- 42" GRAB BAR. BOBRICK #B-6806-42

GB2- 36" GRAB BAR. BOBRICK #B-6806-36

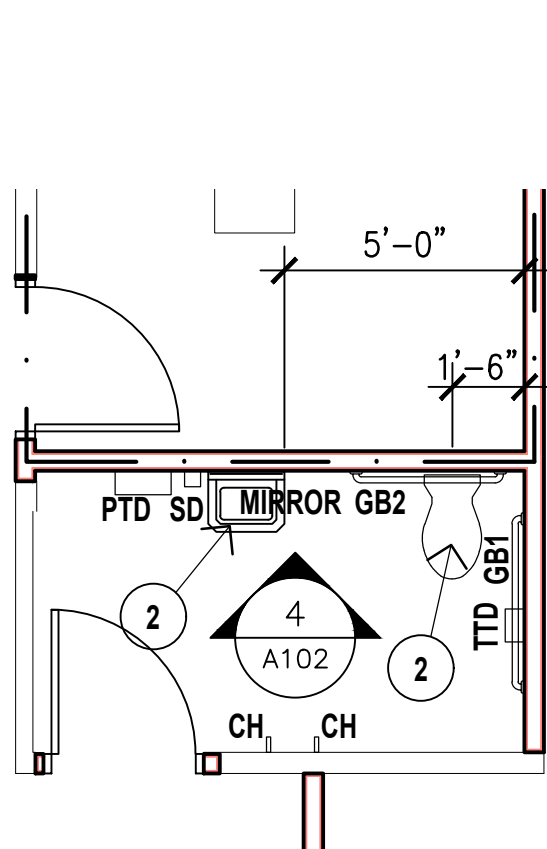
TTD- SURFACE MOUNTED TOILET TISSUE DISPENSER
PLASTIC FOR (2)- 9" ROLLS. "GPC" #582-50
OR EQUAL

SD- SURFACE MOUNTED SOAP DISPENSER
GOVERNMENT FURNISHED & CONTRACTOR
INSTALLED

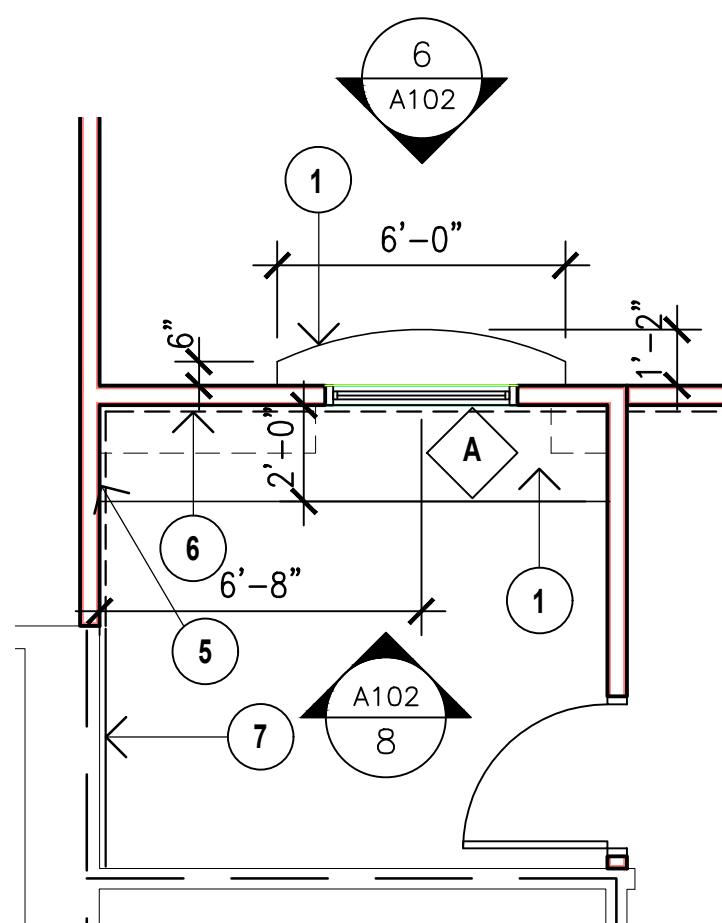
PTD- SURFACE MOUNTED PAPER TOWEL DISPENSER.
BOBRICK #B-262

CH- SURFACE MOUNTED COAT HOOK, (2 TOTAL)
BOBRICK #B-6777
MOUNT (1) @ 6'-0" AFF AND (1) @ 3'-10" AFF.

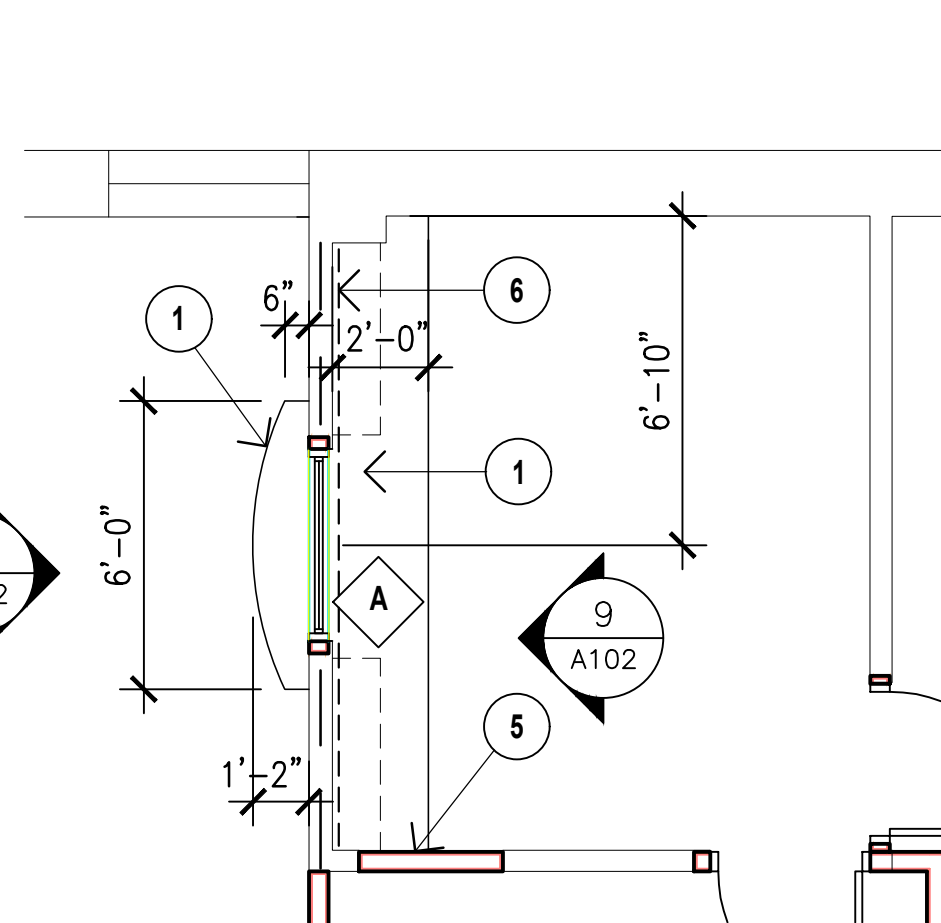
MIRROR- 18" X 36" SEE SPECIFICATIONS.



1 ENLARGED FLOOR PLAN
1/4"=1'-0" RM B-115

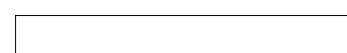


2 ENLARGED FLOOR PLAN
1/4"=1'-0" RM B-134

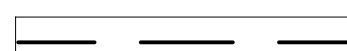


3 ENLARGED FLOOR PLAN
1/4"=1'-0" RM B-104

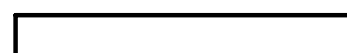
WALL LEGEND



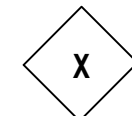
EXISTING METAL STUD & GYP BD WALL TO REMAIN.
PROVIDE NEW FINISHES PER SCHEDULE. WALL
EXTENDS TO APPROXIMATELY 6" ABOVE CEILING



EXISTING METAL STUD & GYP BD WALL TO REMAIN.
NEW METAL STUD CRIPPLE WALL WITH GYP BD
FINISH & SOUND INSULATION TO STRUCTURE ABOVE.
(APPROXIMATELY 3'-6" HIGH)



NEW METAL STUD & GYP BOARD WALL WITH
SOUND INSULATION TO STRUCTURE ABOVE.



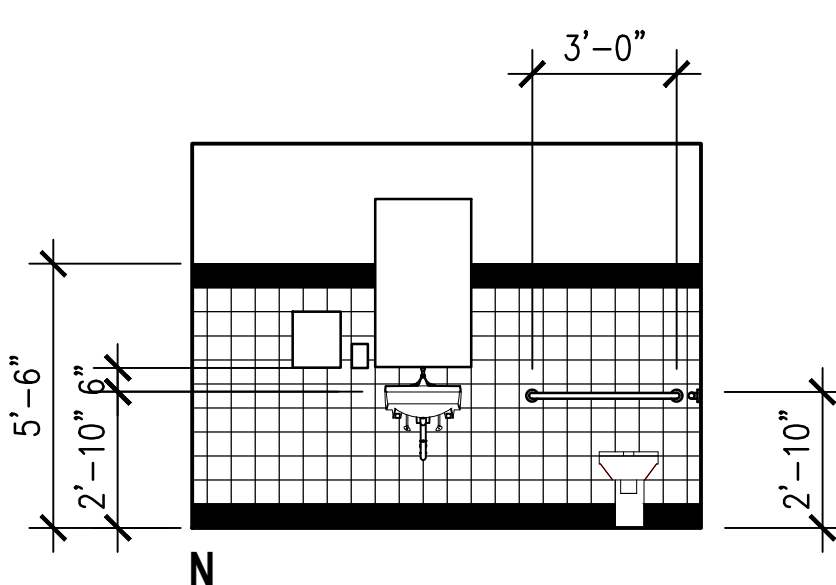
WINDOW TYPE. SEE DRAWING A602.

GENERAL FLOOR PLAN NOTES:

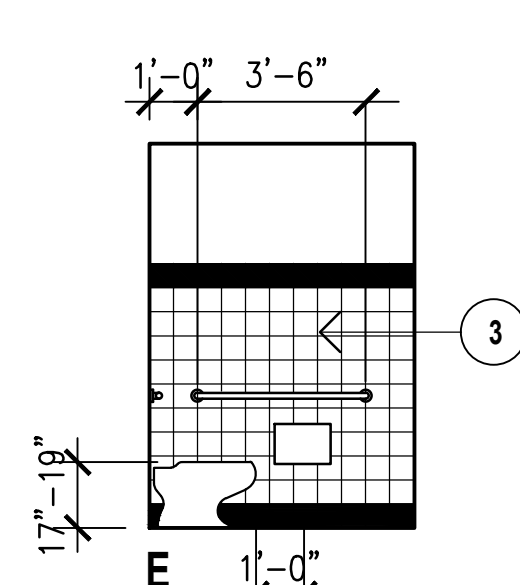
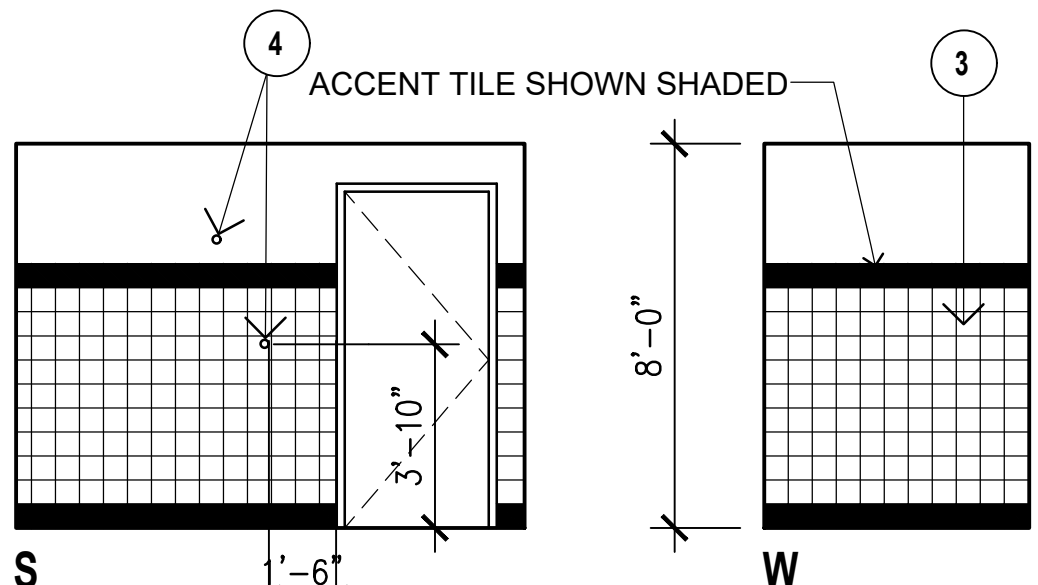
- SEE REFLECTED CEILING PLAN A-101-R FOR SURVEILLANCE
CAMERA LOCATIONS.
- SEE FINISH SCHEDULE ON DRAWING A-601 FOR NEW FINISHES.
- WHERE NEW WALLS ALIGNS WITH EXISTING WALLS CONTRACTOR
SHALL PROVIDE STUD WIDTHS AS REQUIRED TO MATCH OVERALL
EXISTING WALL THICKNESS SO THAT NEW FINISHES ALIGN FLUSH..

KEY NOTES:

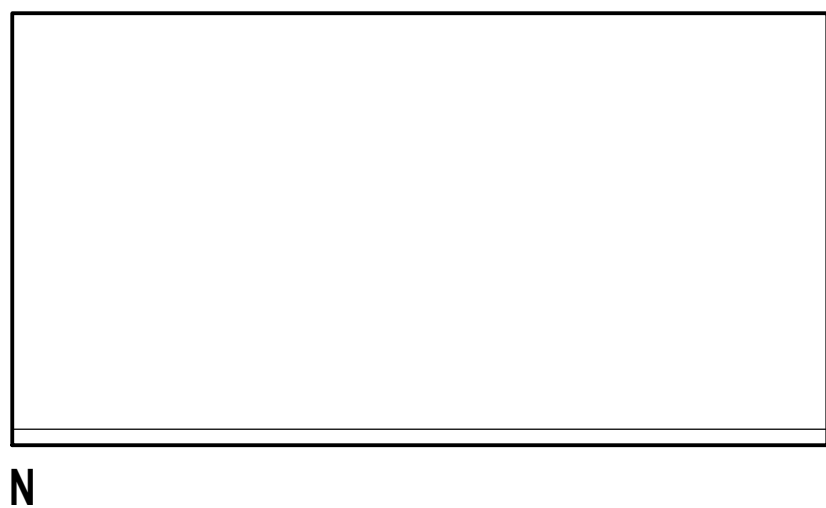
- NEW MILLWORK. SEE INTERIOR ELEVATIONS BELOW.
- NEW PLUMBING FIXTURE.
- NEW TILE WAINSCOT.
- COAT HOOK.
- LOCATION OF WALL MOUNTED, FLAT SCREEN, SECURITY
MONITOR. SEE ELECTRICAL DRAWINGS.
- BULLET RESISTANT PANEL UNDER WALL FINISH. (SHOWN
DASHED) SEE WALL TYPES A501.
- ADD LAYER(S) OF GYP BD, TO 3" ABOVE CEILING, TO FLUSH
WITH NEW WALL FINISHES BEYOND.



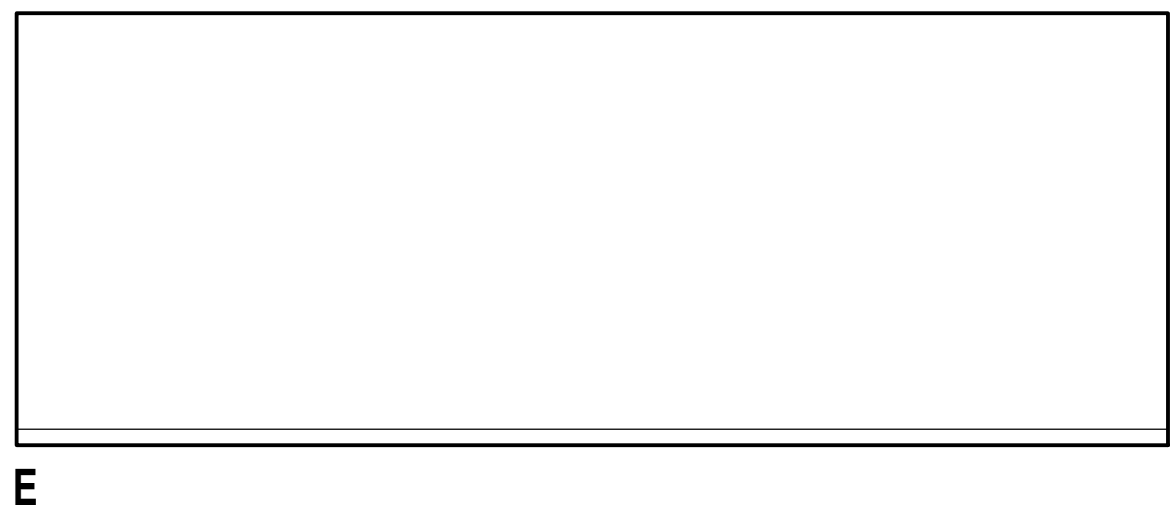
4 INTERIOR ELEVATION- RM B-115 UNISEX TOILET
1/4"=1'-0"



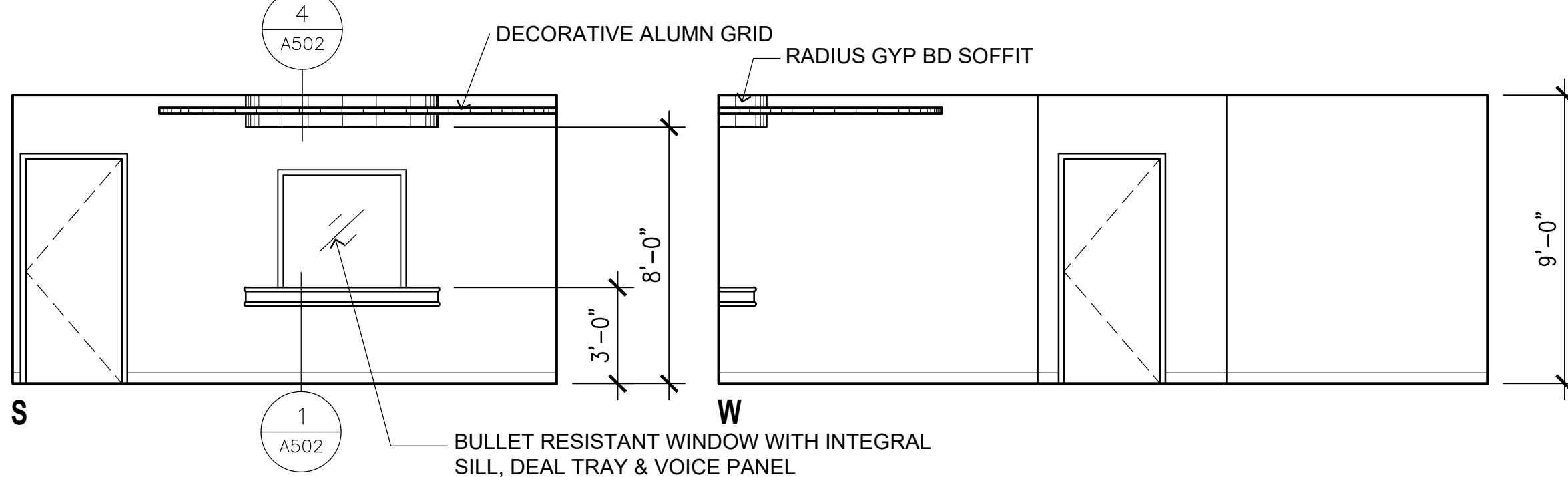
5 NOT USED
1/4"=1'-0"



N



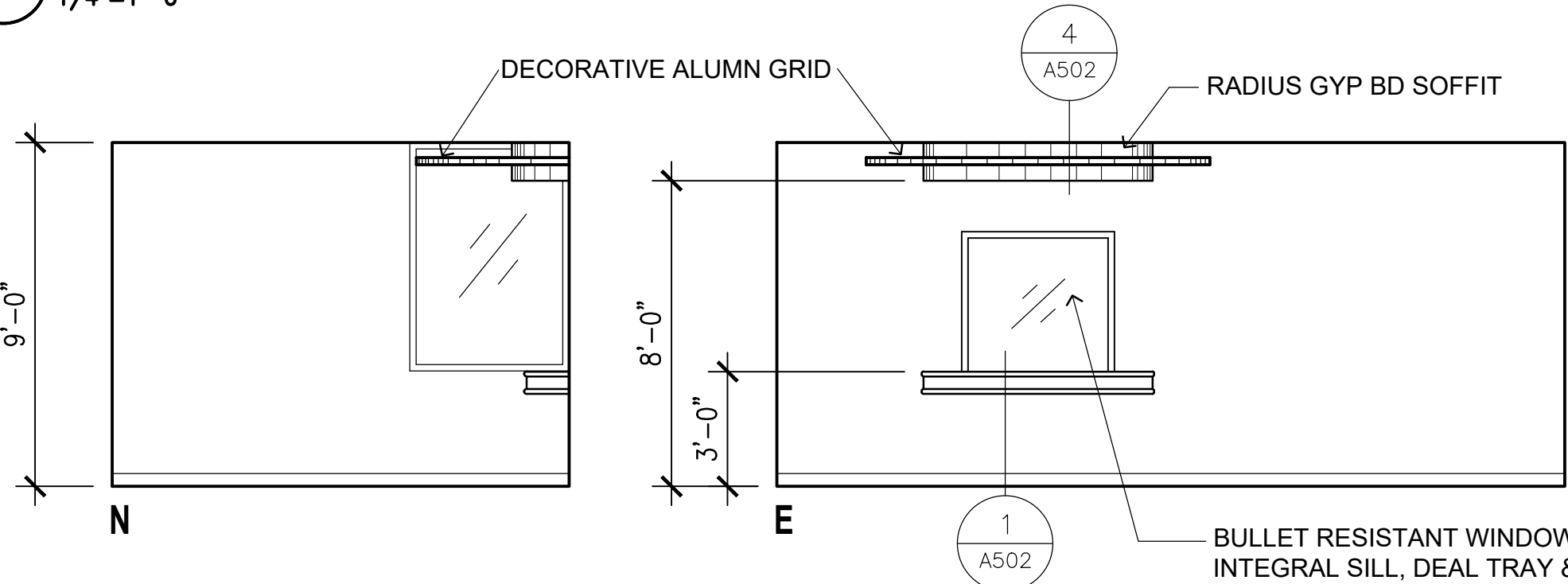
E



S

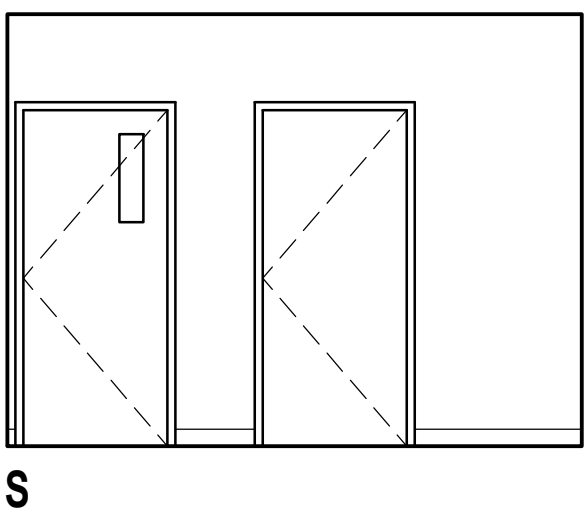
W

6 INTERIOR ELEVATION- RM B-102 FAMILY ADVOCATE WAITING
1/4"=1'-0"

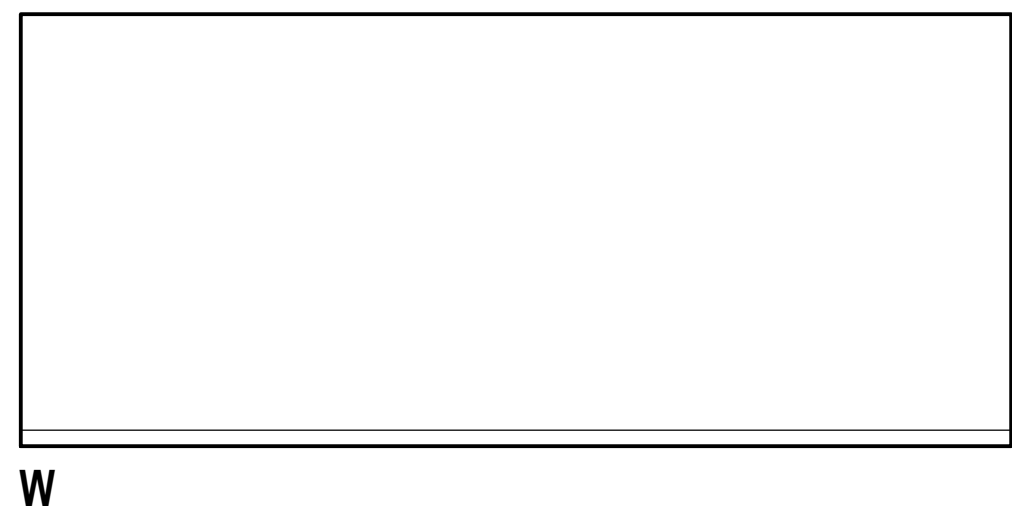


N

E

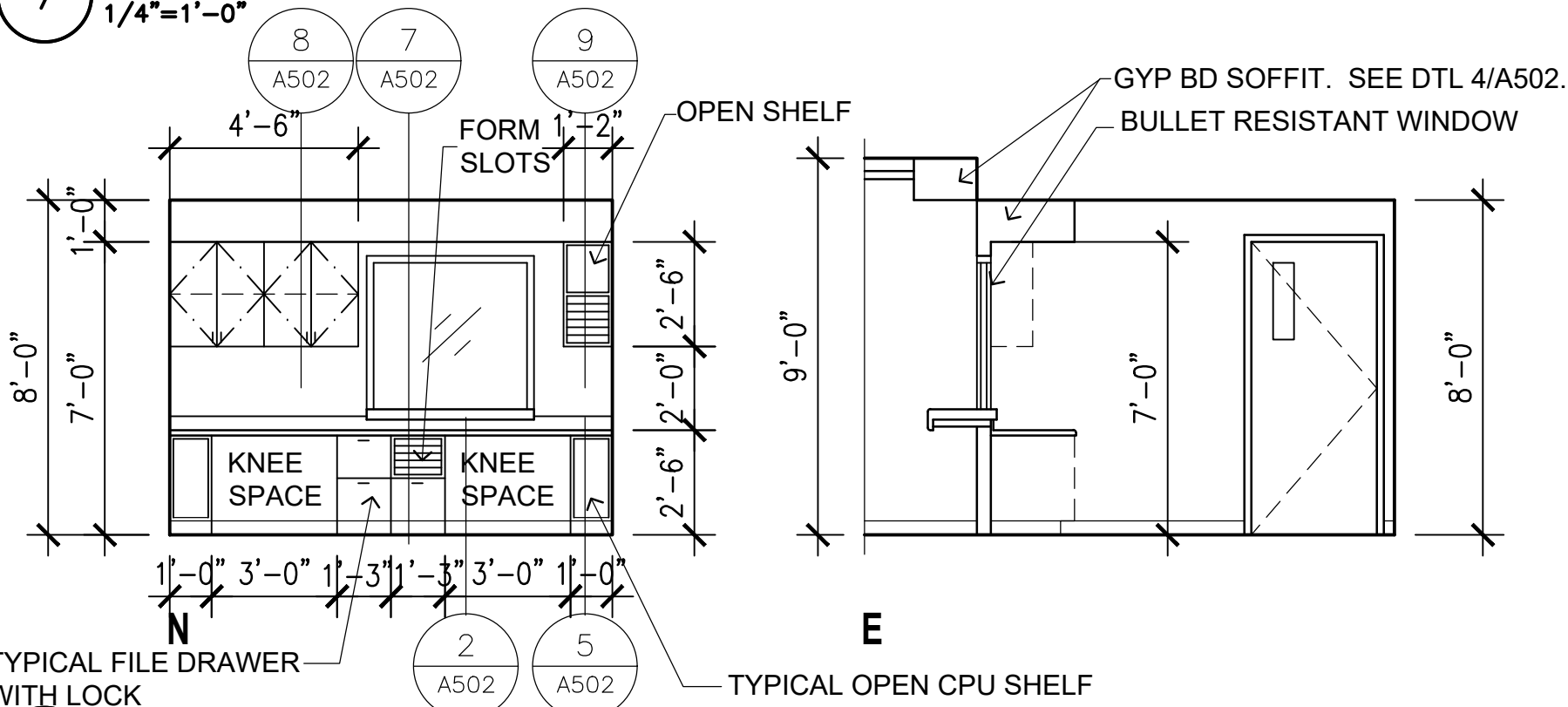


S



W

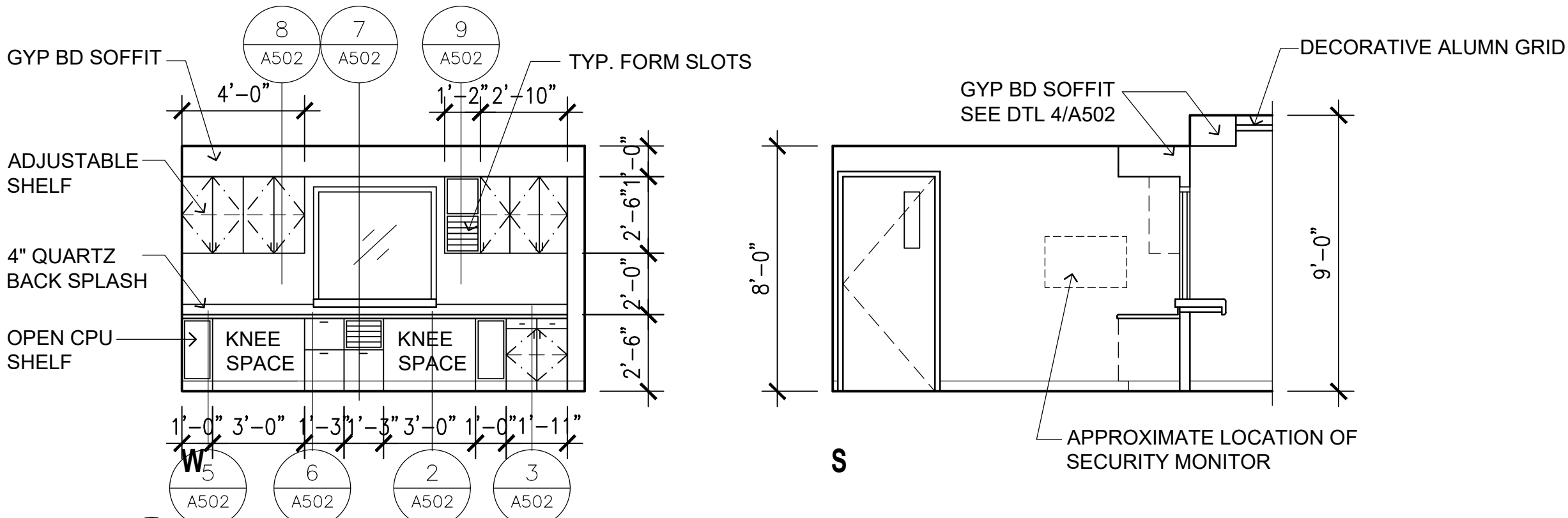
7 INTERIOR ELEVATION- RM B-103 LIFE SKILLS WAITING
1/4"=1'-0"



TYPICAL FILE DRAWER
WITH LOCK

TYPICAL OPEN CPU SHELF

8 INTERIOR ELEVATION- RM B-134 FAM ADV RECEPTION/TECH
1/4"=1'-0"



9 INTERIOR ELEVATION- RM B-104 LIFE SKILLS RECEPTION/TECH
1/4"=1'-0"



LITTLE ROCK A.F.B.
ARKANSAS

GARVER ENGINEERS

1010 BATTERY STREET
LITTLE ROCK, ARKANSAS 72202
www.garverengineers.com
(501) 376-3633

CROMWELL
ARCHITECTS ENGINEERS

101 SOUTH SPRING ST
LITTLE ROCK AR 72201
TELEPHONE 501-372-2900
FACSIMILE 501-372-0482

No.	Revision/Issue	Date	BY	APP'D

PROJECT TITLE
REPAIR & RENOVATE MEDICAL CLINIC PH V
LITTLE ROCK AIR FORCE BASE
JACKSONVILLE, ARKANSAS
100% SUBMITTAL

DRAWN BY P.J.L.	LEAD DESIGNER K. TAYLOR
TECH REVIEWER P.J.L.	PROJECT NUMBER NKAK#06-8006-5
DESIGNED BY P. LEDFORD	SHEET
DATE 7 MAY 2008	A-102
SCALE 1/4"=1'-0"	6 OF 27