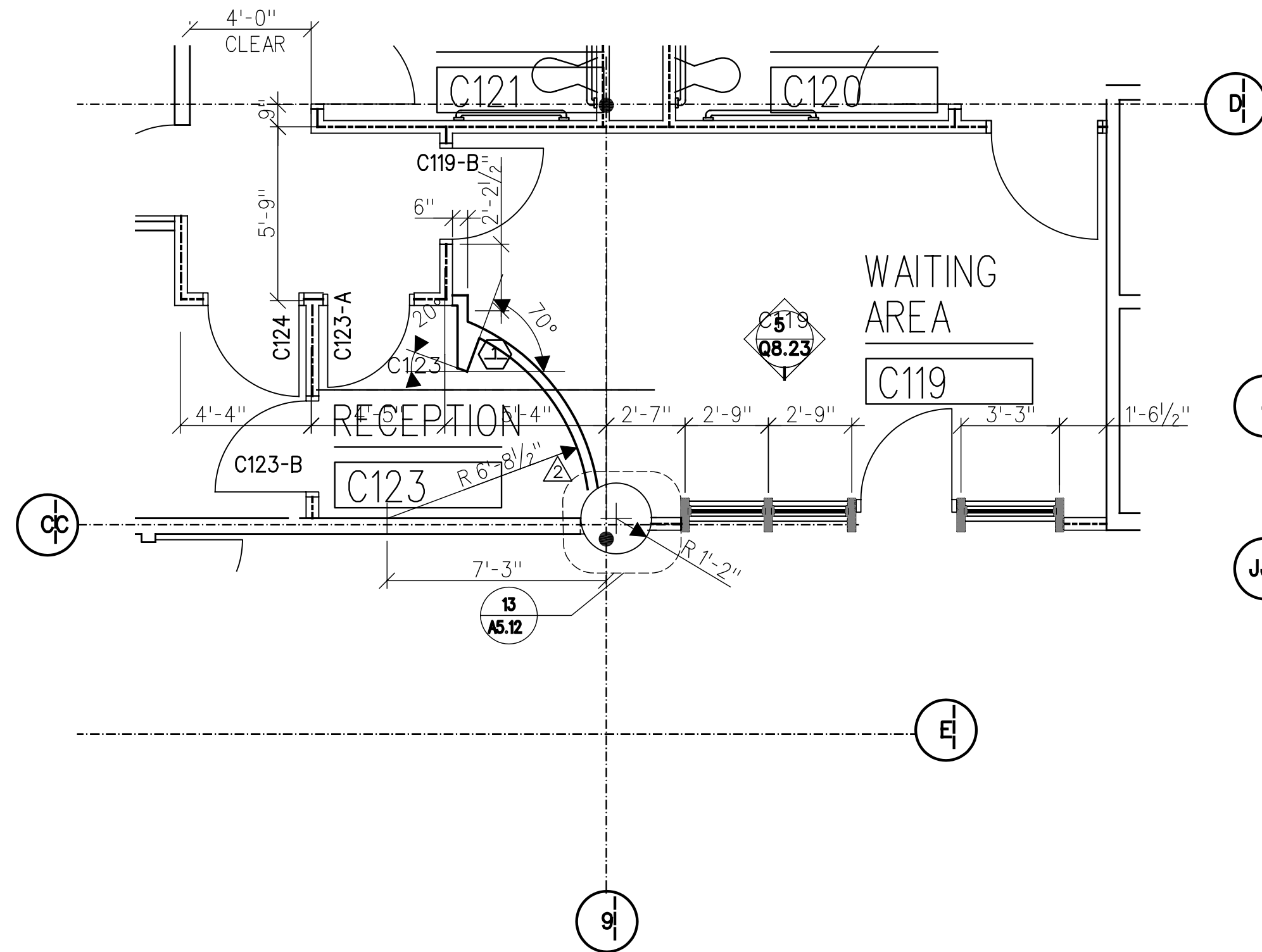


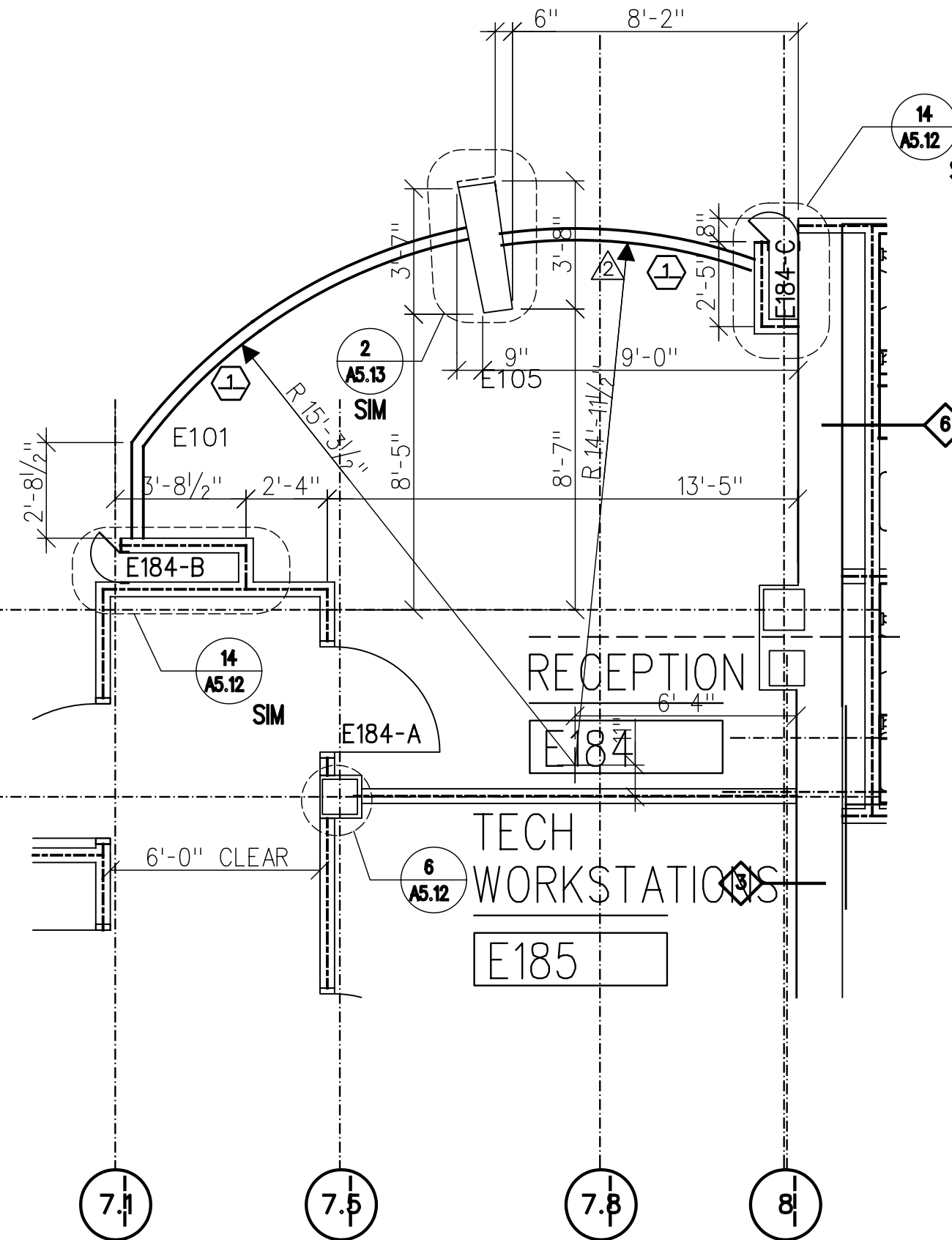
1 RECEPTION AREA - A191

SCALE: 1/4" = 1'-0"



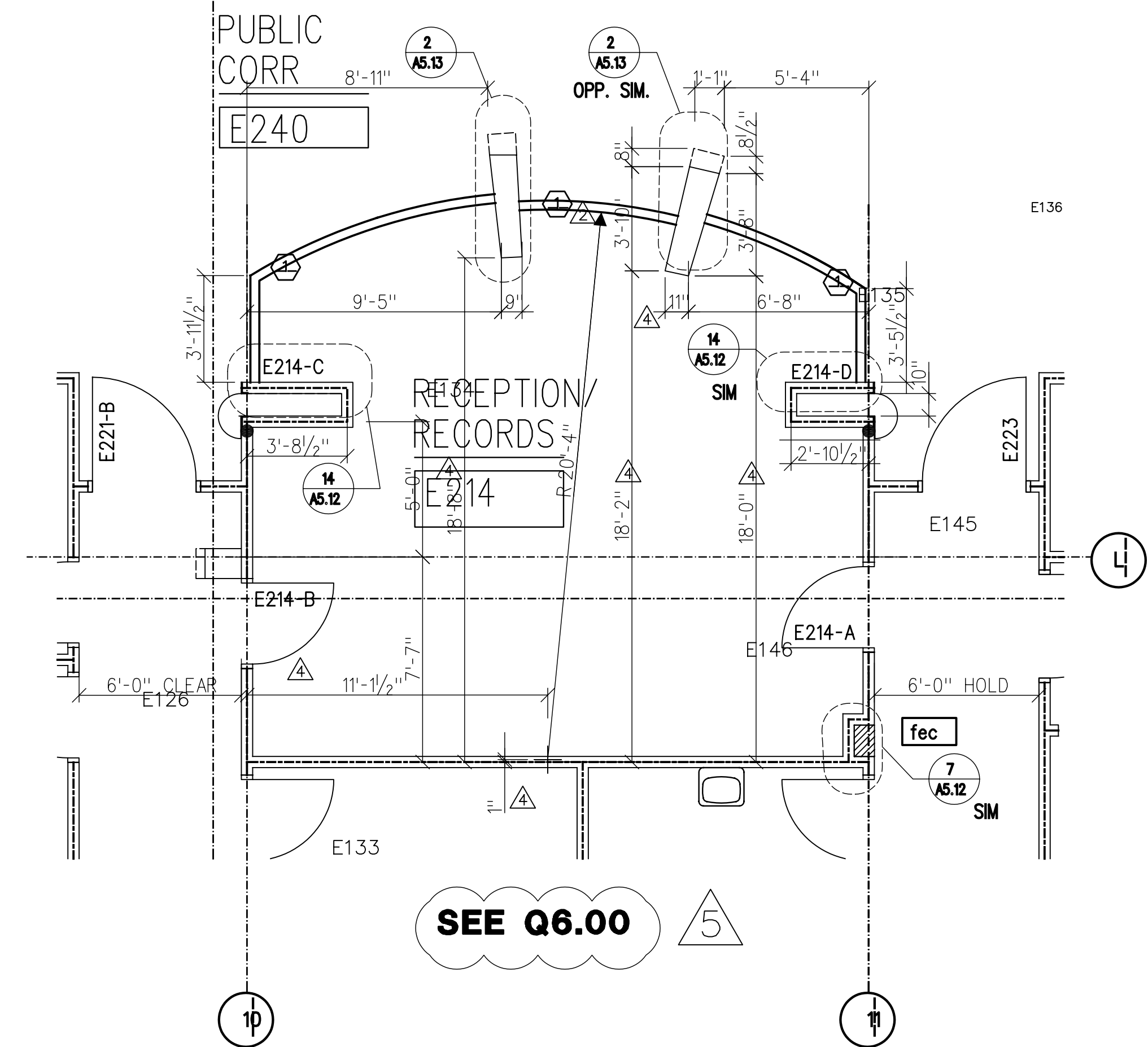
2 RECEPTION AREA - C123

SCALE: 1/4" = 1'-0"



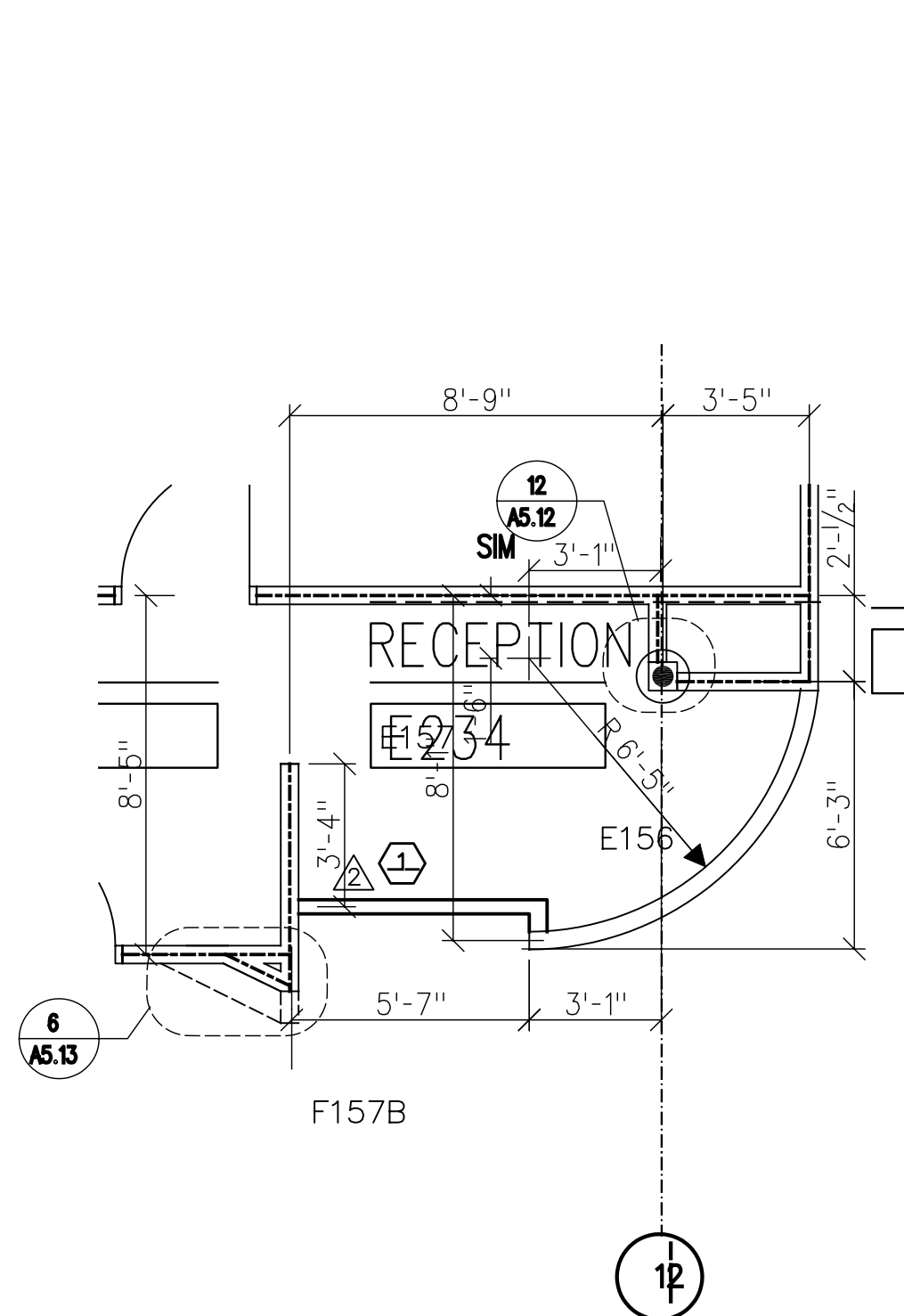
3 RECEPTION AREA - E184

SCALE: 1/4" = 1'-0"



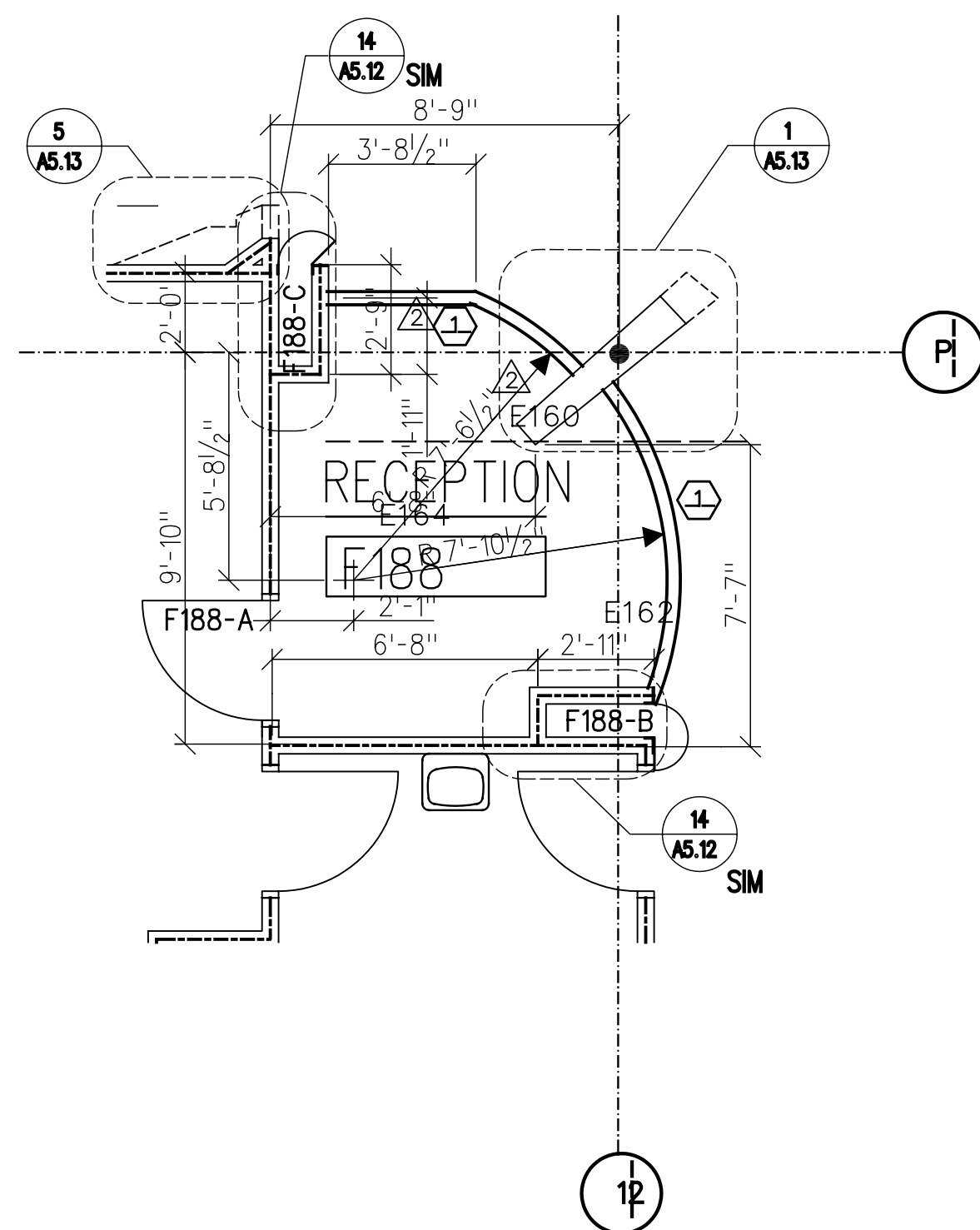
4 RECEPTION AREA - E214

SCALE: 1/4" = 1'-0"



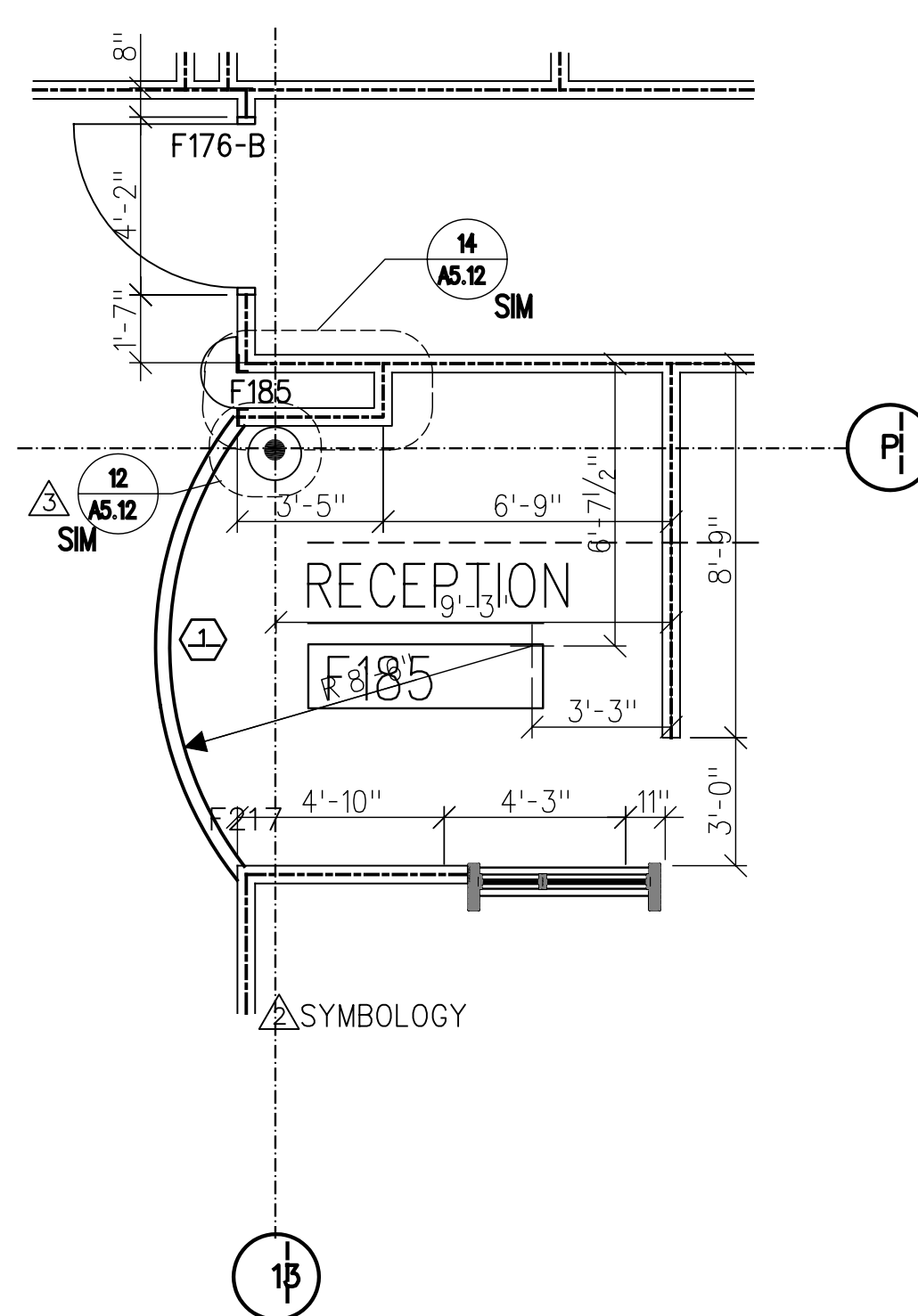
5 RECEPTION AREA - E234

SCALE: 1/4" = 1'-0"



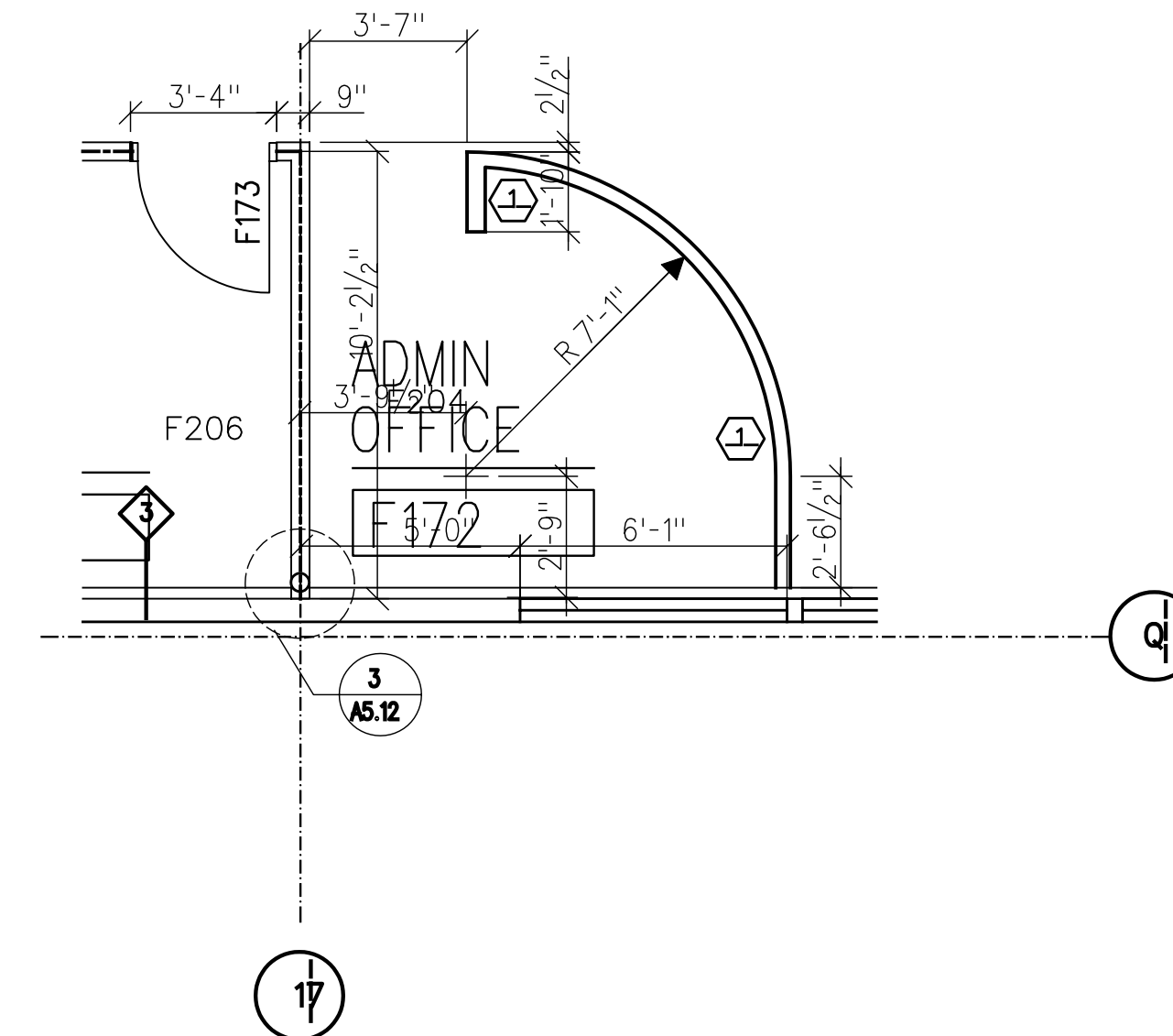
6 RECEPTION AREA - F188

SCALE: 1/4" = 1'-0"



7 RECEPTION AREA - F185

SCALE: 1/4" = 1'-0"



8 RECEPTION AREA - F172

SCALE: 1/4" = 1'-0"

### GENERAL NOTES.

- SOLID LINES INDICATE NEW CONSTRUCTION WHILE BROKEN LINES (SCREENED LINES) INDICATE EXISTING CONSTRUCTION OR NEW CONSTRUCTION COVERED IN A PREVIOUS DIVISION.
- PROVIDE IN WALL BLOCKING IN ACCORDANCE WITH SPECIFICATIONS AND EQUIPMENT REQUIREMENTS.
- CONTRACTORS SHALL FIELD VERIFY ALL EXISTING CONDITIONS AND REPORT ANY DISCREPANCIES TO THE ARCHITECT.
- METAL STUD PARTITIONS ARE TYPICALLY DIMENSIONED TO CENTERLINE OF WALL. MASONRY PARTITIONS ARE DIMENSIONED TO FACE OF WALL.
- WALLS TO BE WALL TYPE 1 UNLESS NOTED OTHERWISE. REFER TO A5.10 FOR WALL TYPES.
- CIRCLED AREAS INDICATE AREAS THAT HAVE BEEN ENLARGED. SEE REFERENCED DETAILS.
- WHEN 2 DIFFERENT WALL TYPES APPEAR ADJACENT TO EACH OTHER, THE FINISHED WALL SURFACES MUST LINE UP.
- INSTALL VAPOR RETARDER BETWEEN STUD & GYPSUM WALLBOARD ON ALL EXTERIOR WALLS.
- REFER TO SHEETS A4.00, A4.01 FOR OPENING SCHEDULE.
- REFER TO Q6.00 FOR RECEPTION COUNTER MILLWORK PLANS.
- fec** INDICATES A FIRE EXTINGUISHER CABINET.
- F176-B INDICATES DOOR NUMBER. REFER TO DOOR SCHEDULE A4.00 AND A4.01.

### KEYED NOTES.

- WALL FOR MILLWORK SUPPORT. WORKSURFACE TO BE AT A FINISHED HEIGHT OF 30". SEE Q6.00 FOR MILLWORK PLANS. SEE Q5.60 FOR MILLWORK SECTIONS.

DESIGNED BY: DATE: 10/10/2003	PROJECT NO.: 61503
DRAWN BY: HLM	CHECKED BY: HLM
U.S. ARMY ENGINEERING AND SUPPORT CENTER CORPS OF ENGINEERS HUNTSVILLE, ALABAMA	REVIEWED BY: SOLICITATION NUMBER: 2012-00000000-0000-0000-0000-0000

RENOVATE CLINIC  
BUILDING 1090  
LITTLE ROCK AFB, ARKANSAS  
**ENLARGED RECEPTION  
AREA PLANS AS-BUILT**

SHEET  
REFERENCE  
NUMBER:  
**A6.00**  
SHEET X OF XX