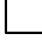


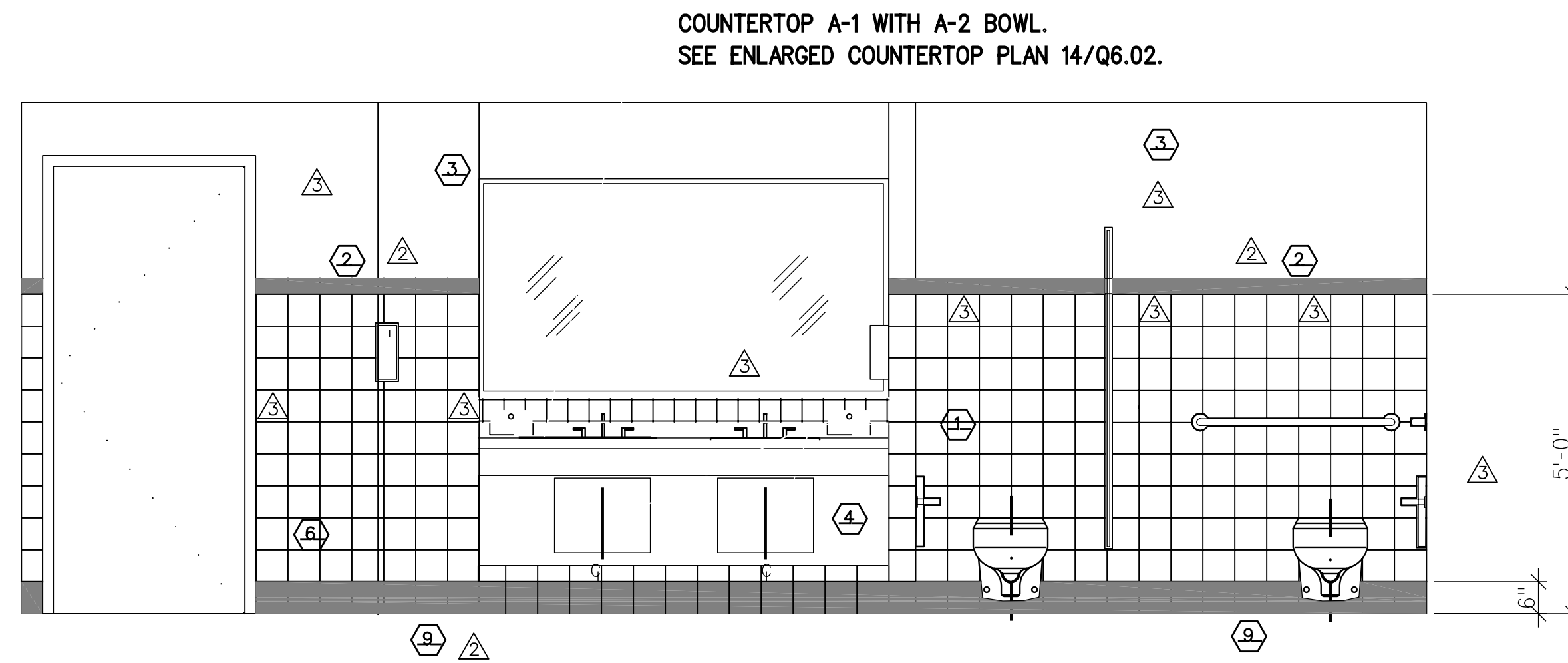


KEYED NOTES

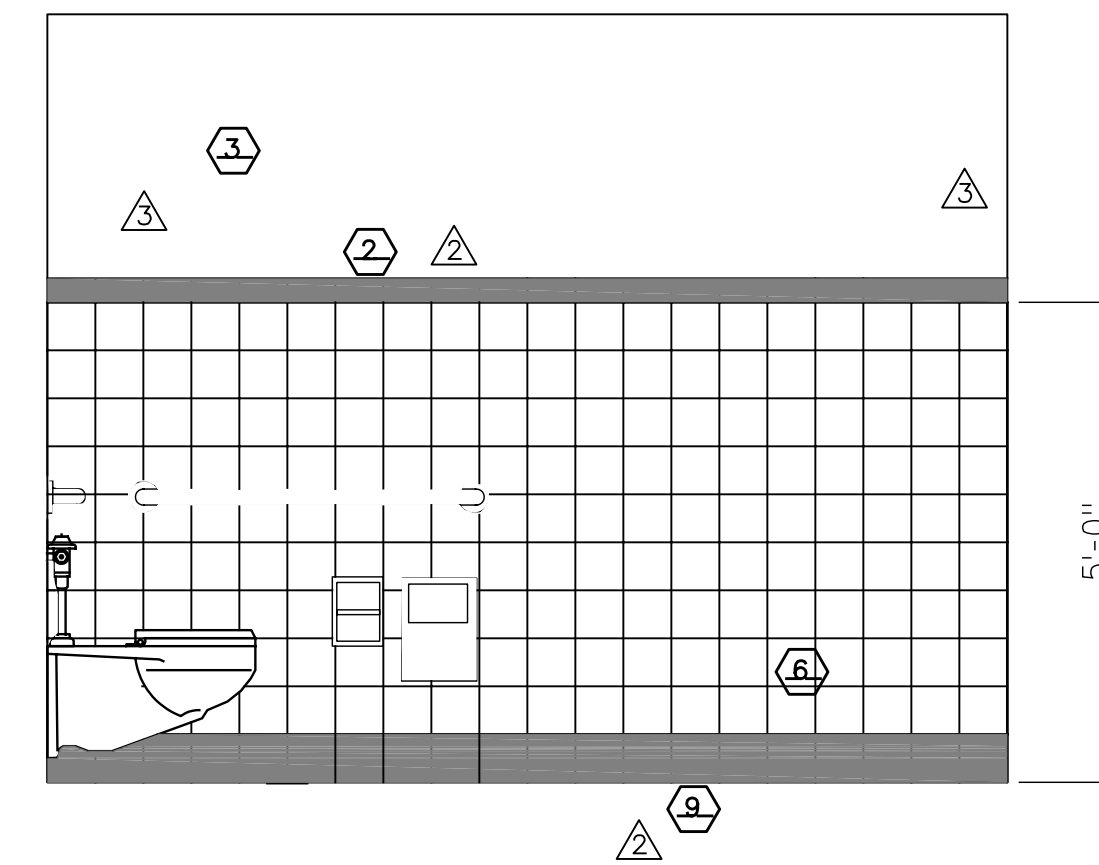
- | | |
|---|---|
| ① | ACCESS PANEL |
| ② | 3" X 6" NOMINAL BULLNOSED TILE (Q-1365), K-189 NAVY |
| ③ | P-1E |
| ④ | LAMINATE PANEL, SEE EQ. SCHEDULE |
| ⑤ | TILED FLOOR |
| ⑥ |  CT-1, 0182 SUEDE GRAY, 6" X 6" NOMINAL SIZE |
| ⑦ |  CT-2, 0136 FAWN, 6" X 6" NOMINAL SIZE |
| ⑧ |  CT-3, K-189 NAVY, 6" X 6" NOMINAL SIZE |
| ⑨ | COVERED 6" X 6" NOMINAL (Q-3686), K-189 NAVY, BASE TILE |

GENERAL INTERIOR FINISH NOTES

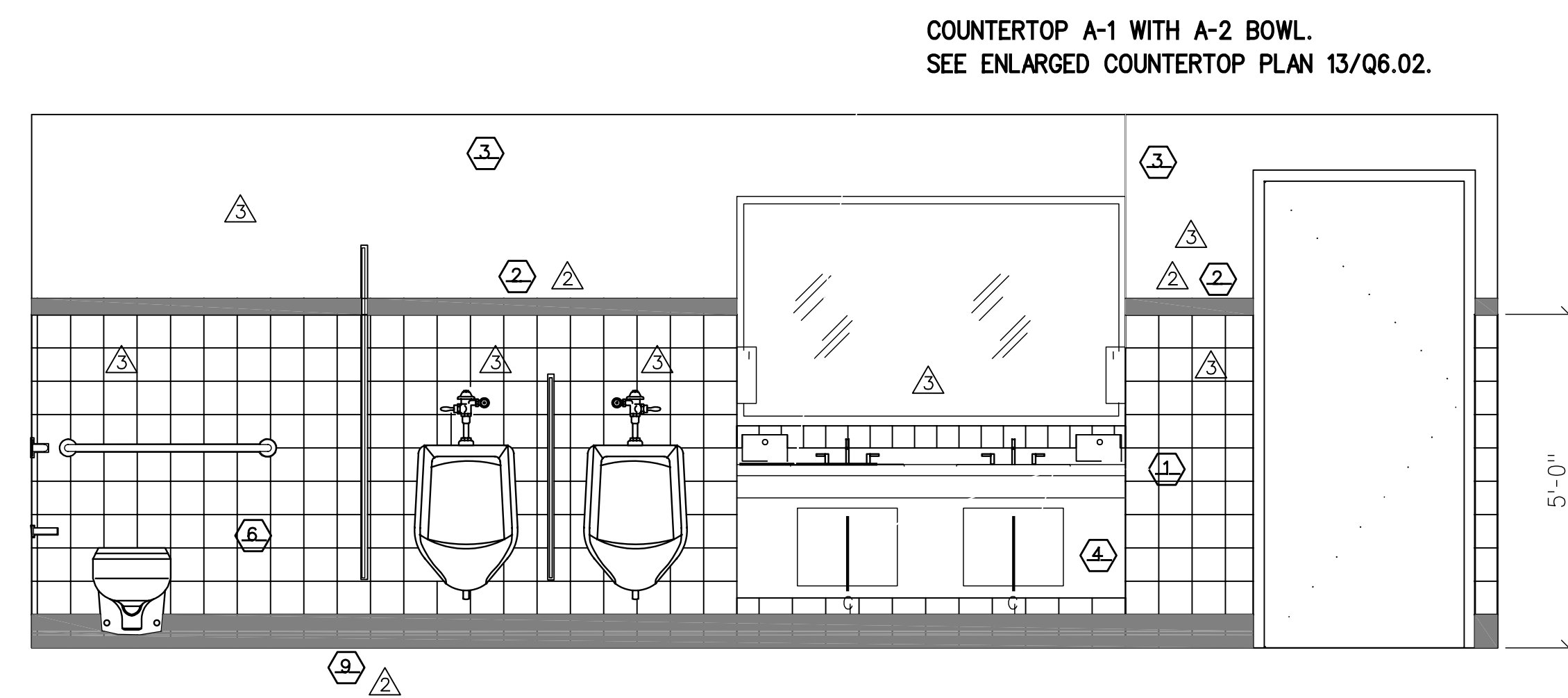
1. ELEVATIONS USED FOR CLARIFICATION OF FINISH SCHEDULE. REFER TO A4.10, A4.11, A4.12 FOR PRIMARY DIRECTION ON FINISHES.
2. REFER TO Q8.22 TOILET ROOM ELEVATIONS FOR EQUIPMENT INFORMATION.
3. SEE SPECIFICATION SECTION 09900 PAINTING FOR INFORMATION REGARDING DOOR FINISH.
4. SEE SPECIFICATION SECTION 09300 CERAMIC TILE FOR PRODUCT AND INSTALLATION INFORMATION.
5. ACCENT TILES TO BE INSTALLED IN A RANDOM METHOD WITH NO SET PATTERN OR REPEAT. USE 20% OF TOTAL NUMBER OF TILES OF EACH ACCENT COLOR TILES TO BE USED.
6. TILE PATTERNS DELETED PER OWNER'S REQUEST ON 12-14-04



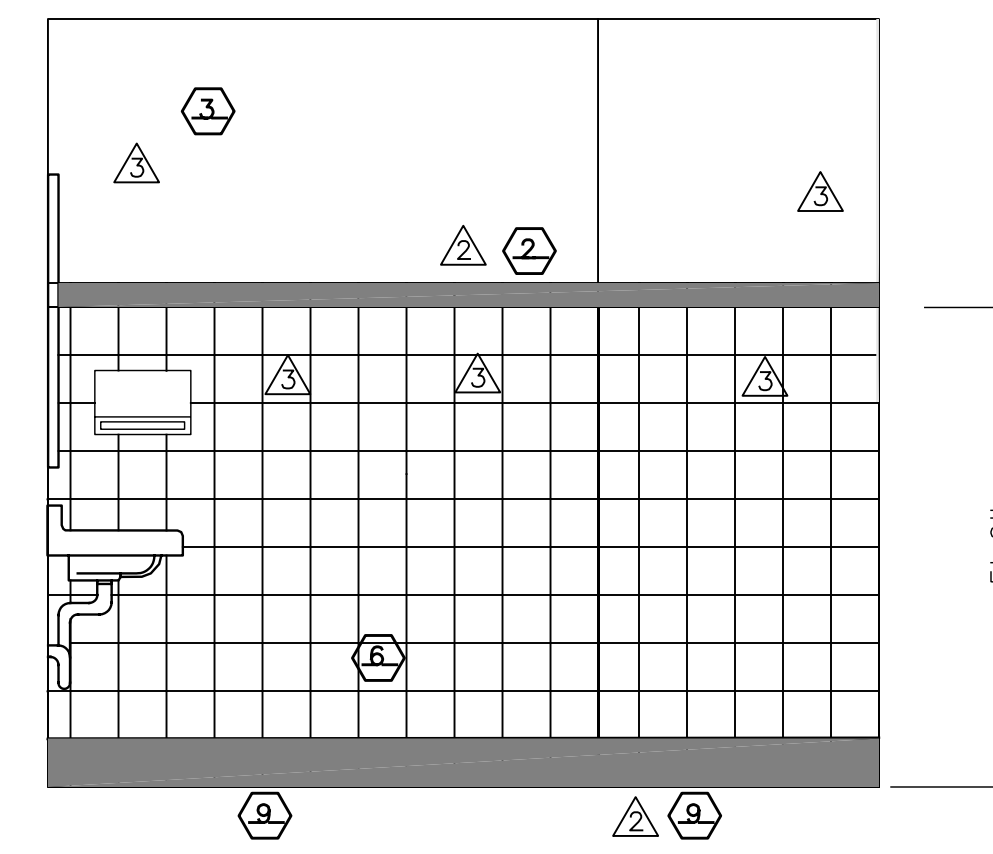
1 PUBLIC TOILET F -A129 SCALE 1/2"=1'-0"



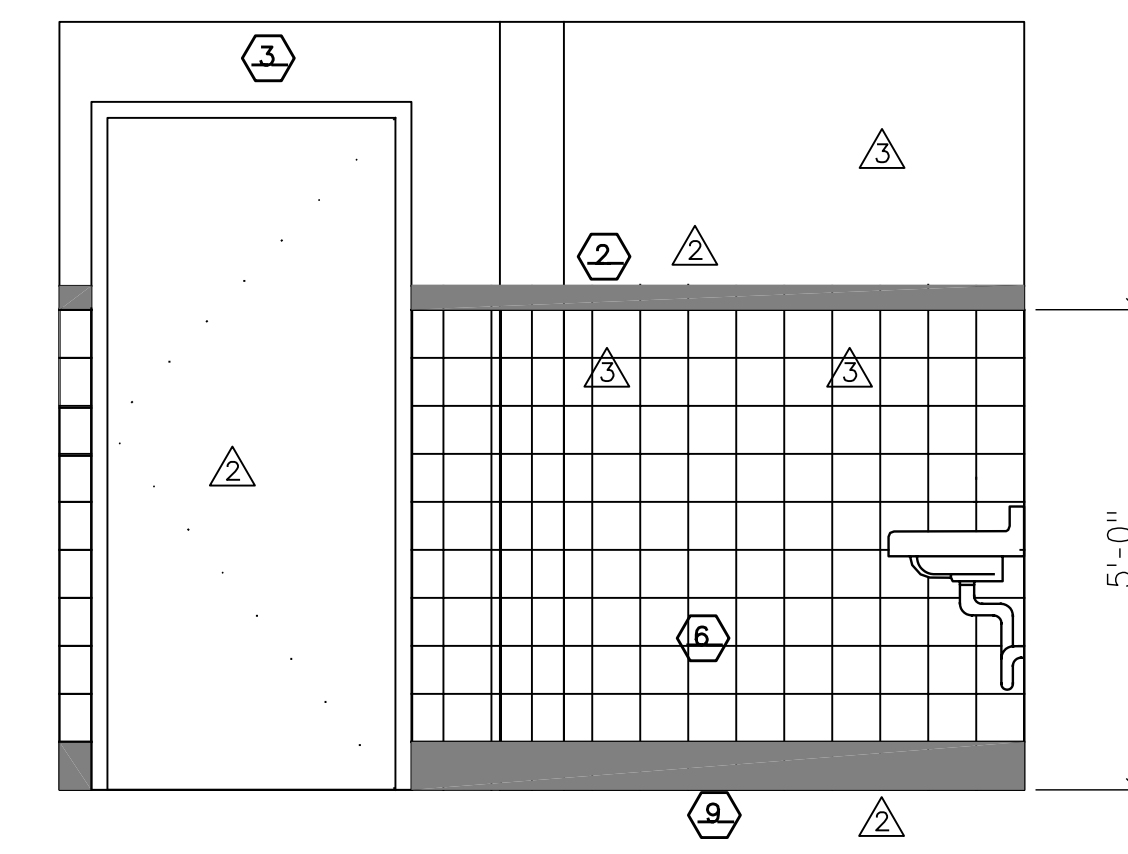
2 PUBLIC TOILET F - A129 SIM. A130, C120, E201, E200, E203A.
SIM. MIRRORED C121, F154 SCALE 1/2"=1'-0"



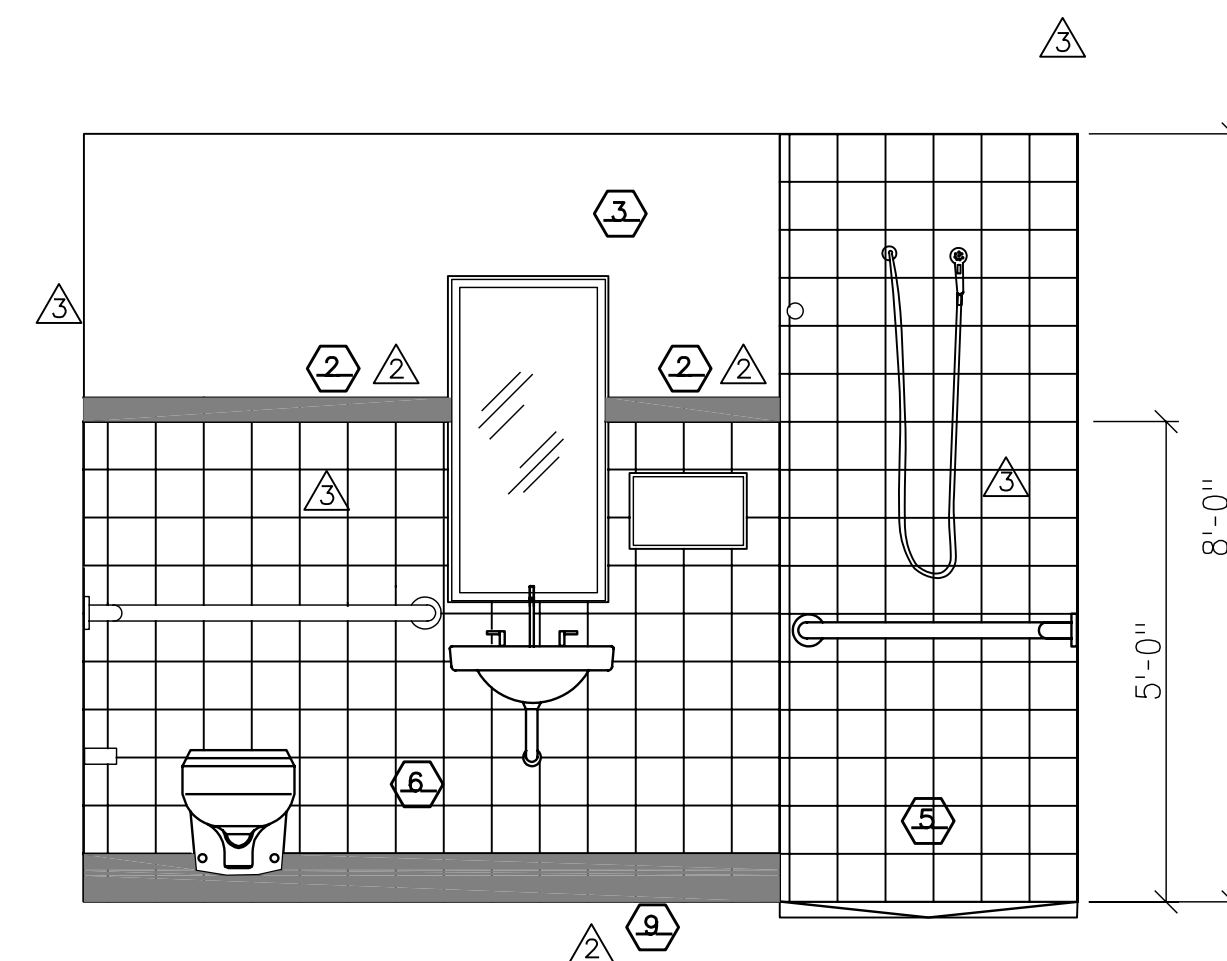
3 PUBLIC TOILET M - A130 SCALE 1/2"=1'-0"



4 TOILET - F155 SCALE 1/2"=1'-0"

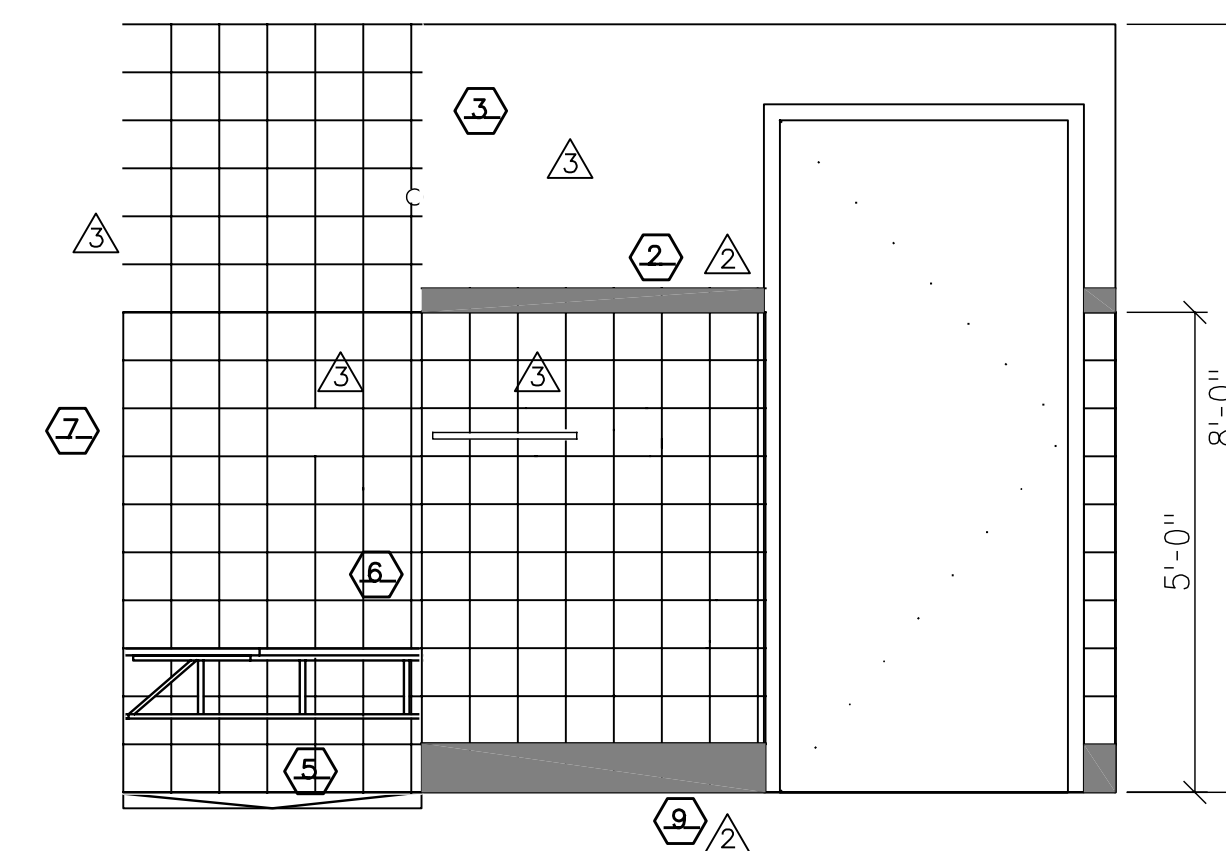
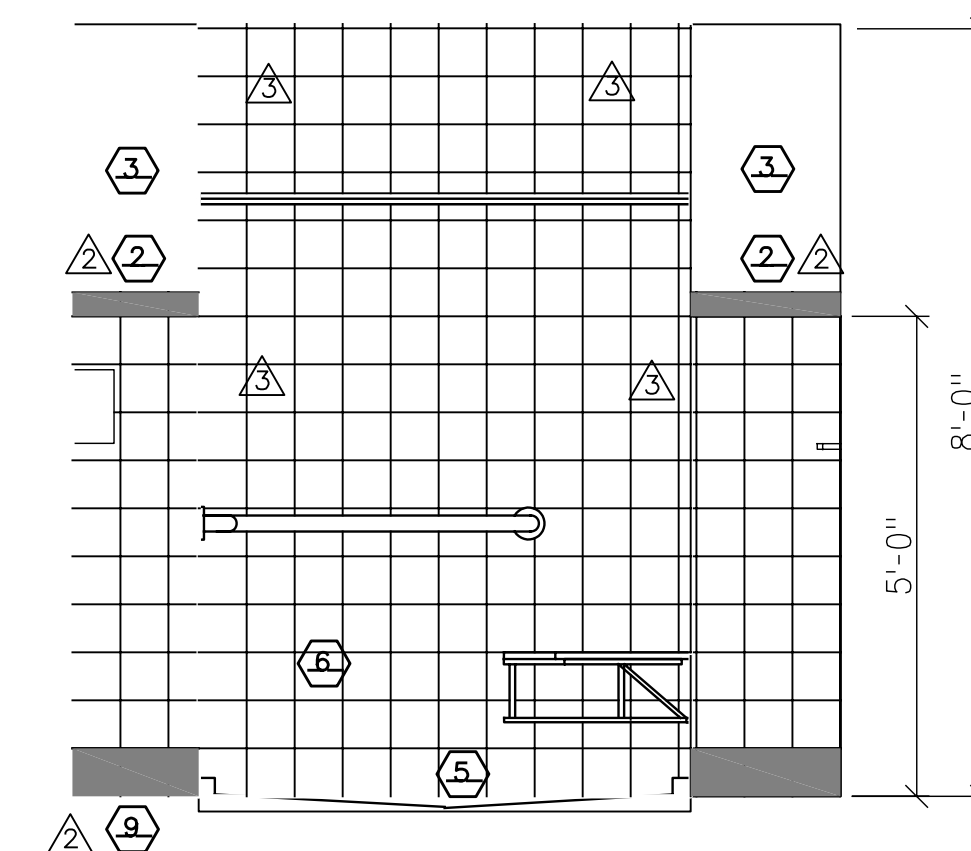
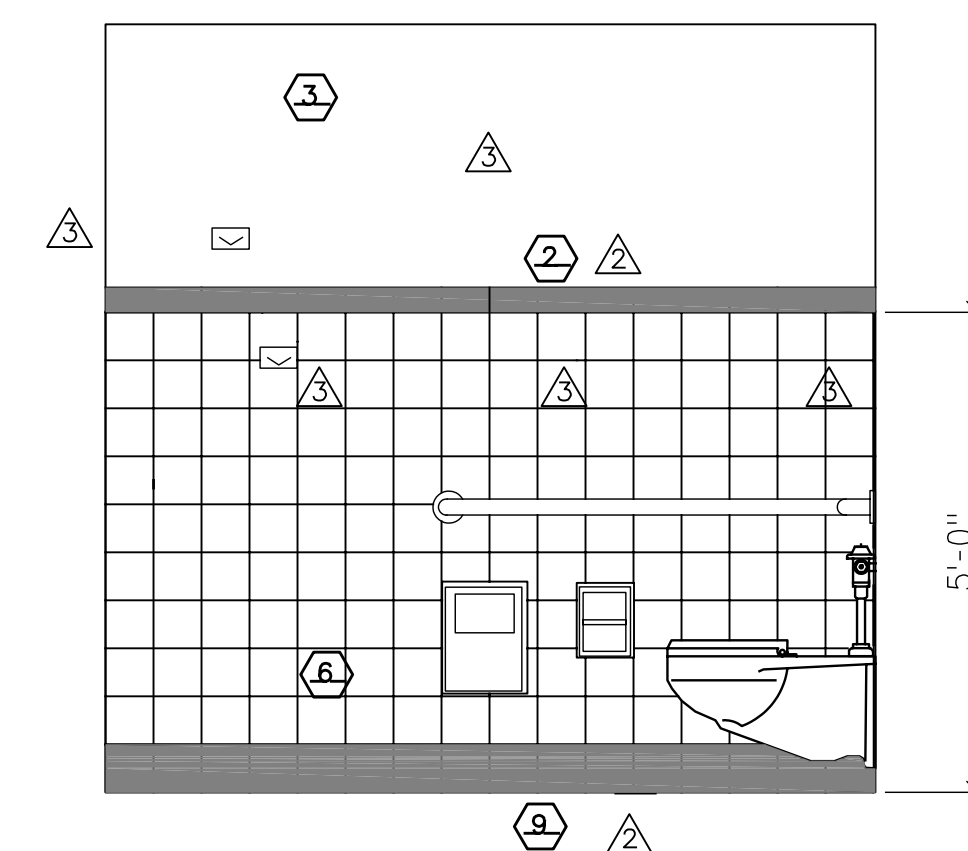



5 TOILET - E203A SCALE 1/2"=1'-0"



6 STAFF SHOWER -E174 SIM. E173

SCALE 1/2"=1'-0"



E A R T H T E C H  3020 Buckhorn Ave., Oak Brook, IL 60452 • (630) 474-0100	DRAWN BY: - PROJECT NO.: 61503 DATE: 10/10/2003
	CHECKED BY: - DRAWING CODE: -
	REVIEWED BY: - SOLICITATION NUMBER: -
	U.S. ARMY ENGINEERING AND SUPPORT CENTER CORPS OF ENGINEERS HUNTSVILLE, ALABAMA

RENOVATE. CEILING.
BUILDING 1090
LITTLE ROCK AFB, ARKANSAS

SHEET
REFERENCE
NUMBER:
A3.20
SHEET X OF XX