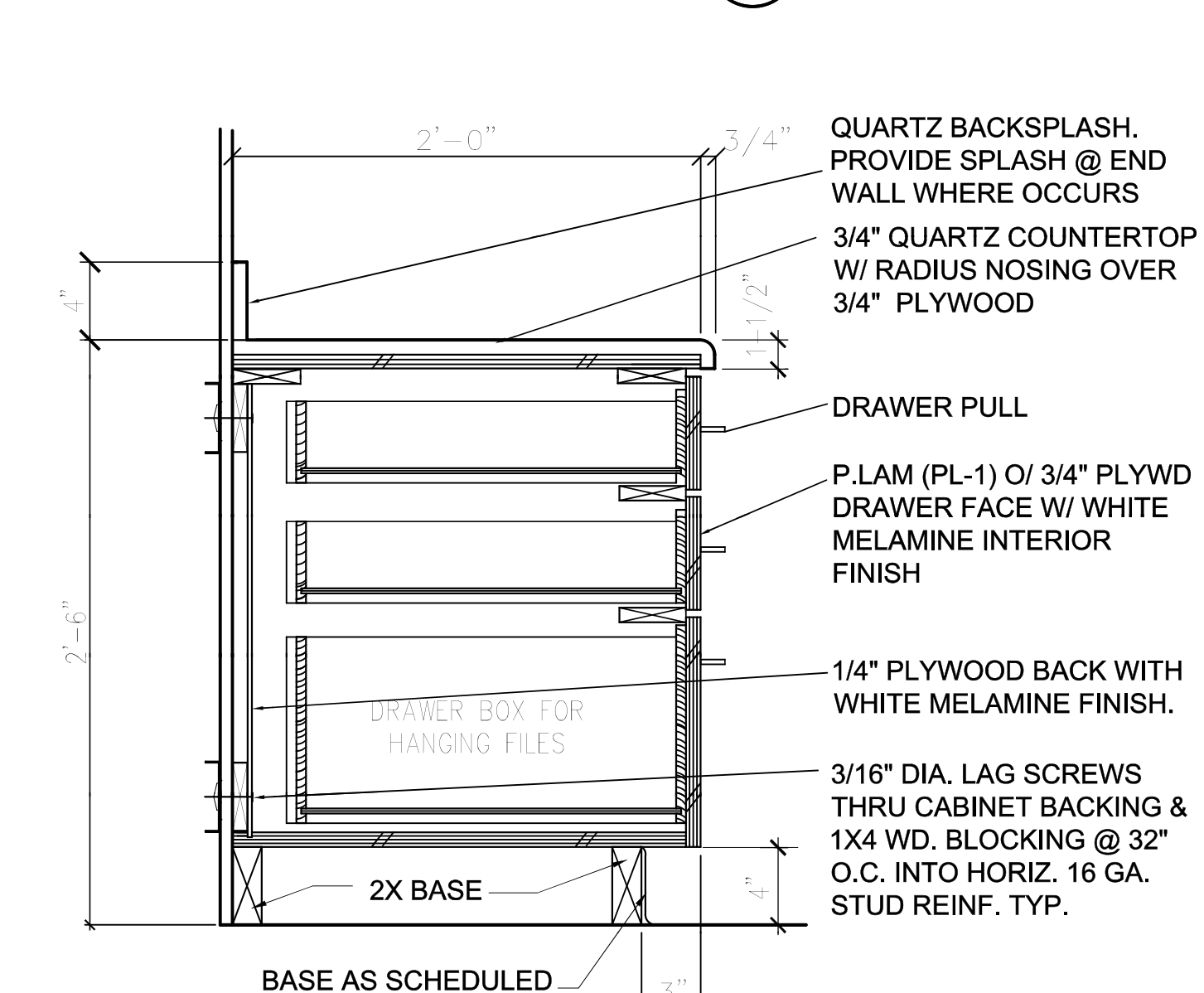
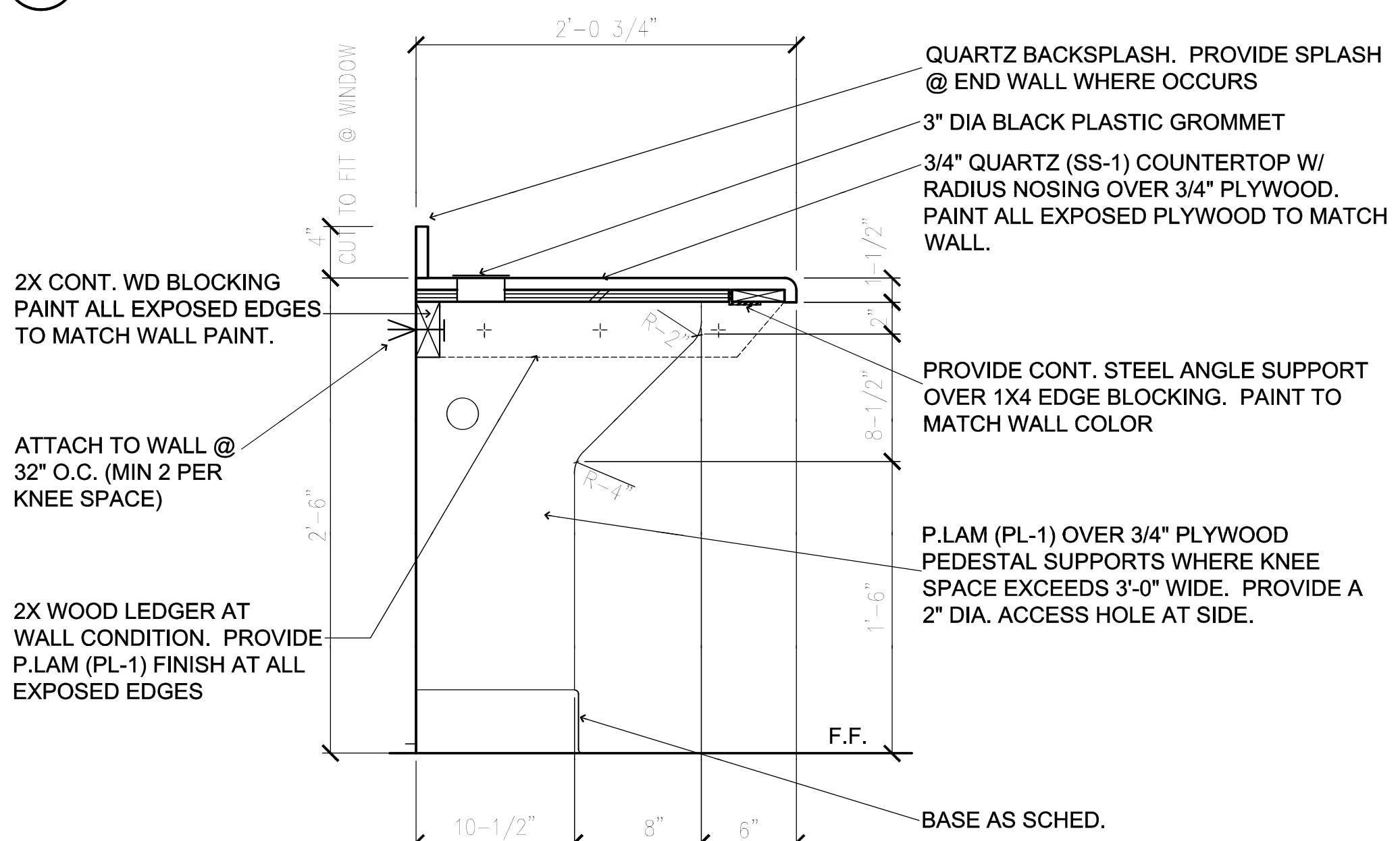


1 MILLWORK - SILL
1-1/2" = 1'-0"

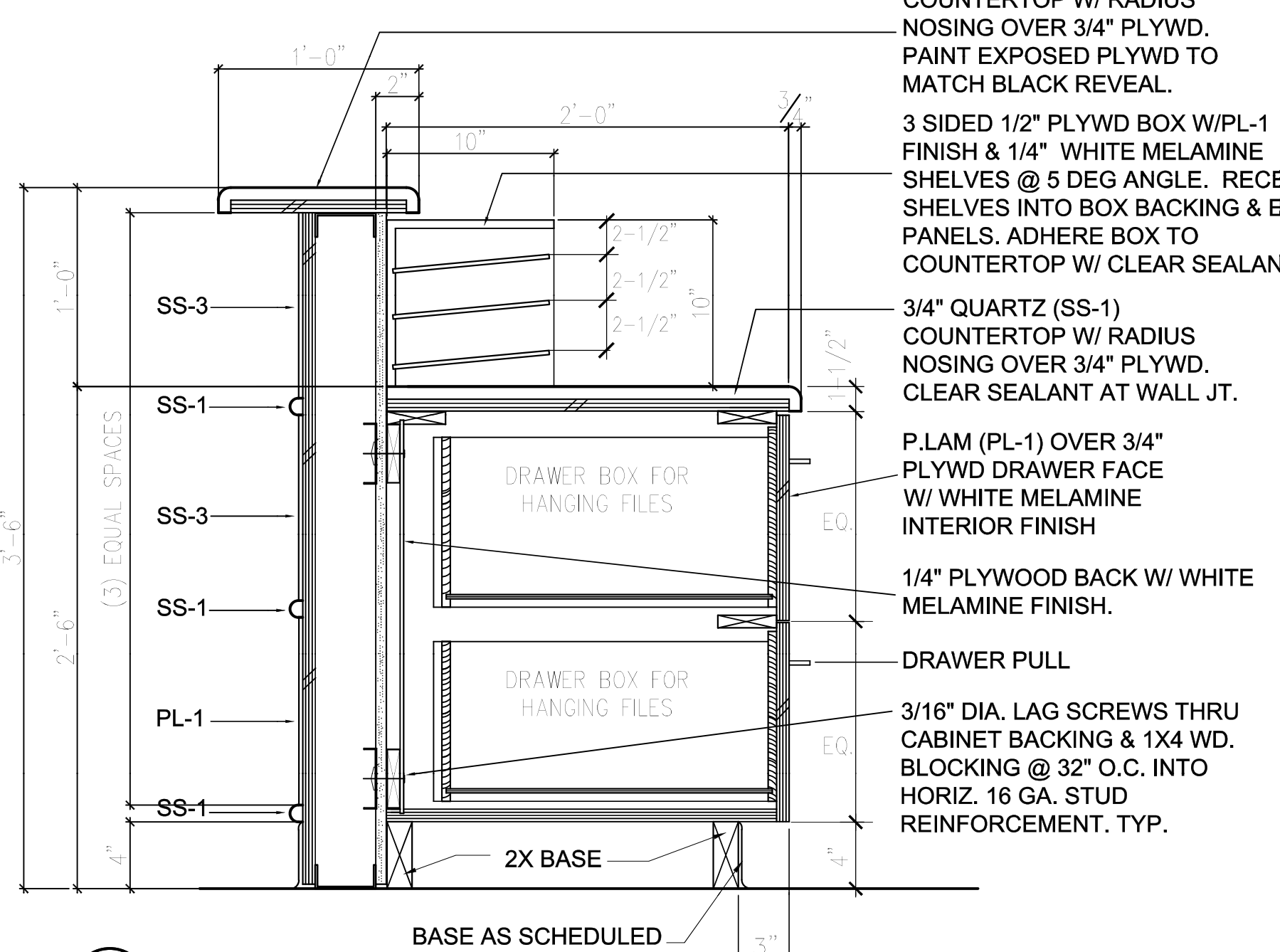
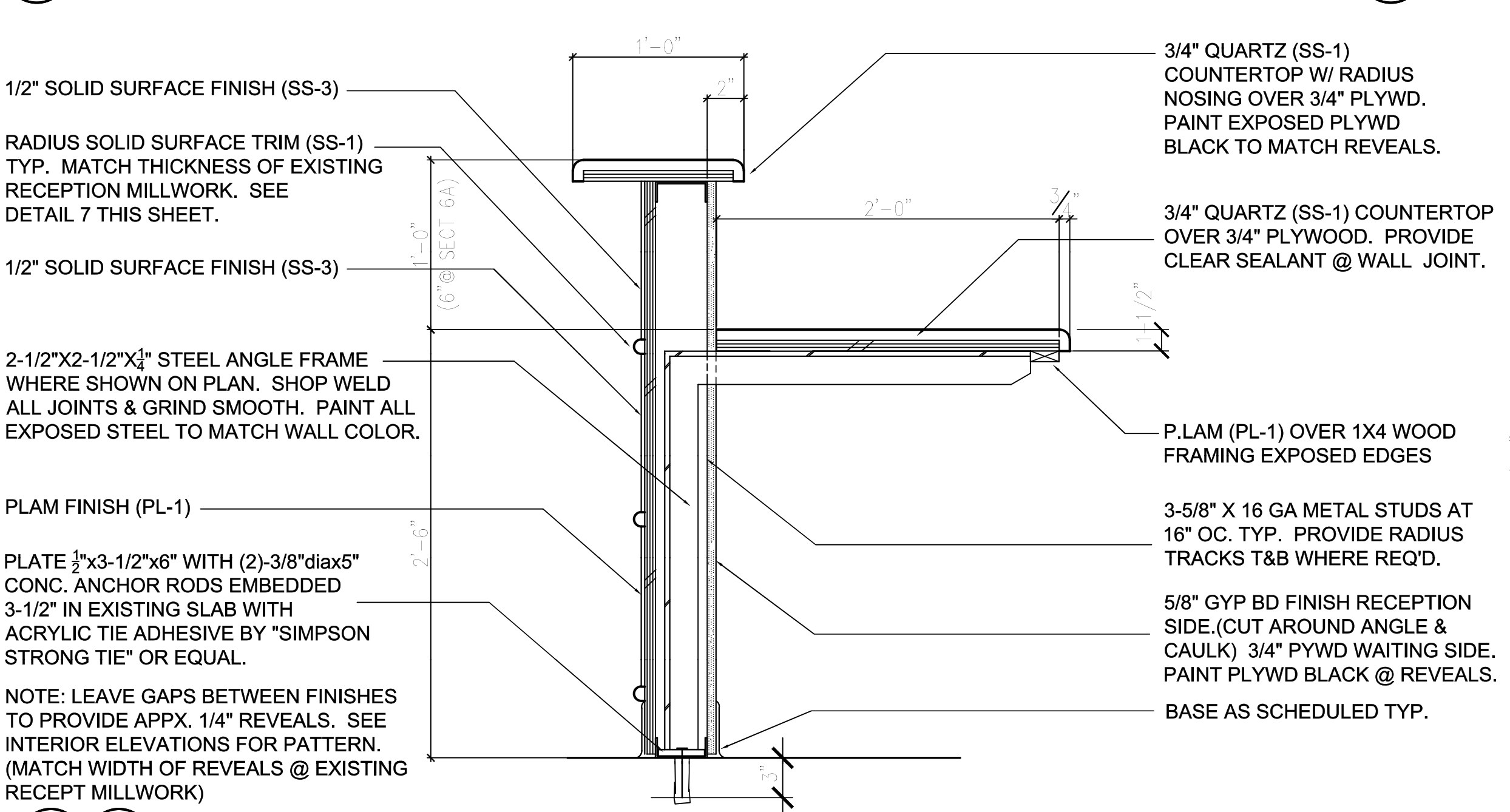
2 MILLWORK
1-1/2" = 1'-0"

3 3A MILLWORK
1-1/2" = 1'-0" NOTE: SECTION 3A @ SINK CONDITION. OMIT DRAWER & SHELF.



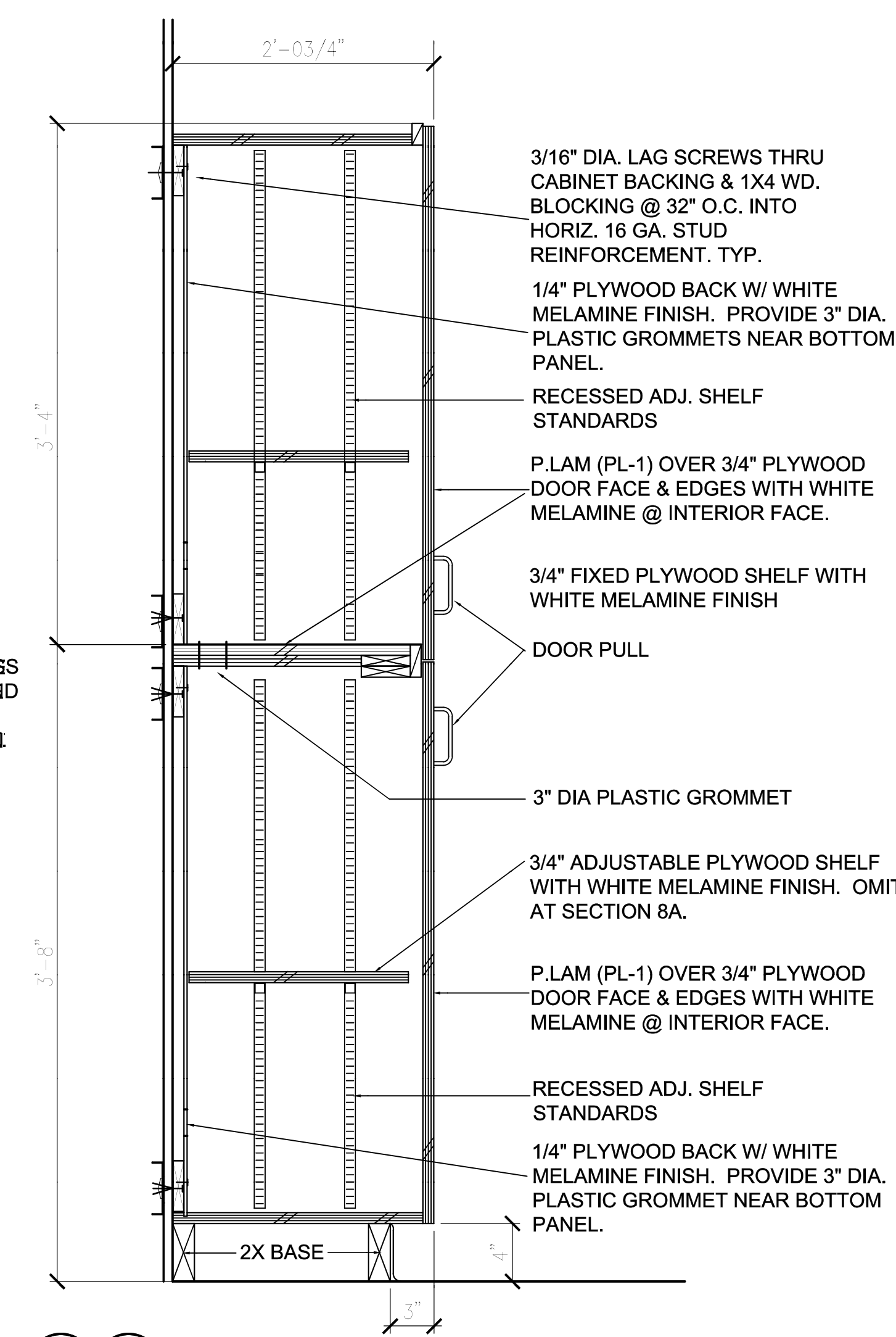
4 MILLWORK
1-1/2" = 1'-0"

5 MILLWORK
1-1/2" = 1'-0"



6 6A MILLWORK
1-1/2" = 1'-0"

7 MILLWORK
1-1/2" = 1'-0"



8 8A MILLWORK
1-1/2" = 1'-0" NOTE: OMIT ADJ. SHELF @ SECT 8A



LITTLE ROCK A.F.B.
ARKANSAS

GARVER ENGINEERS

1010 BATTERY STREET
LITTLE ROCK, ARKANSAS 72202
www.garverengineers.com
(501) 376-3633

CROMWELL
ARCHITECTS ENGINEERS

101 SOUTH SPRING ST
LITTLE ROCK, AR 72201
TELEPHONE 501-372-2900
FACSIMILE 501-372-0482

No.	Revisions/Issues	Date	BY	APP'D

PROJECT TITLE
REPAIR & RENOVATE MEDICAL CLINIC PH IV
LITTLE ROCK AIR FORCE BASE
JACKSONVILLE, ARKANSAS

100% SUBMITTAL
SHEET TITLE

MILLWORK SECTIONS

DRAWN BY PJL	LEAD DESIGNER K. TAYLOR
TECH. REVIEWER PJL	PROJECT NUMBER NKAK#06-8006-4
DESIGNED BY P. LEDFORD	SHEET A-502
DATE JULY 1, 2008	SCALE AS NOTED
	12 OF 50