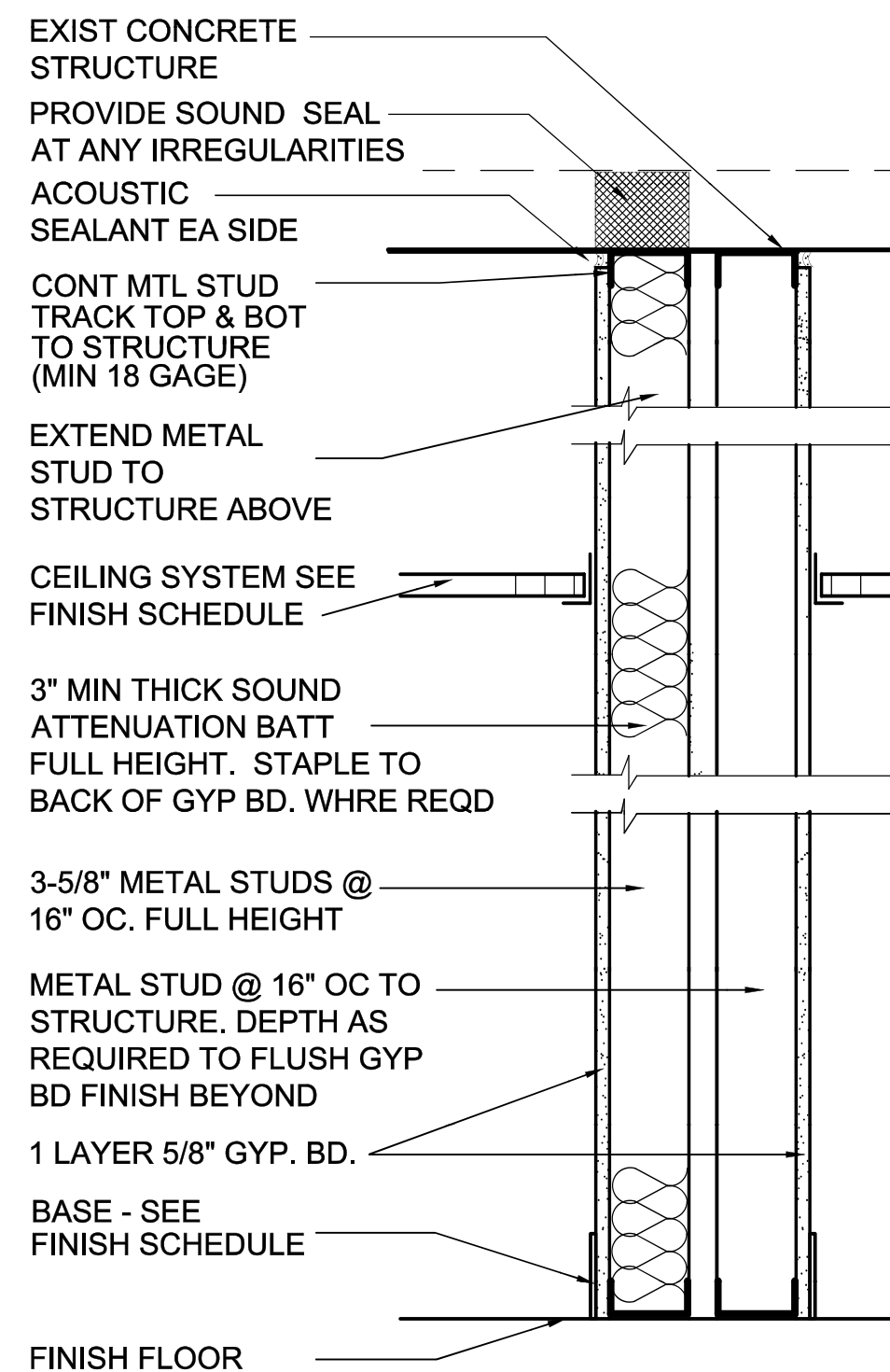
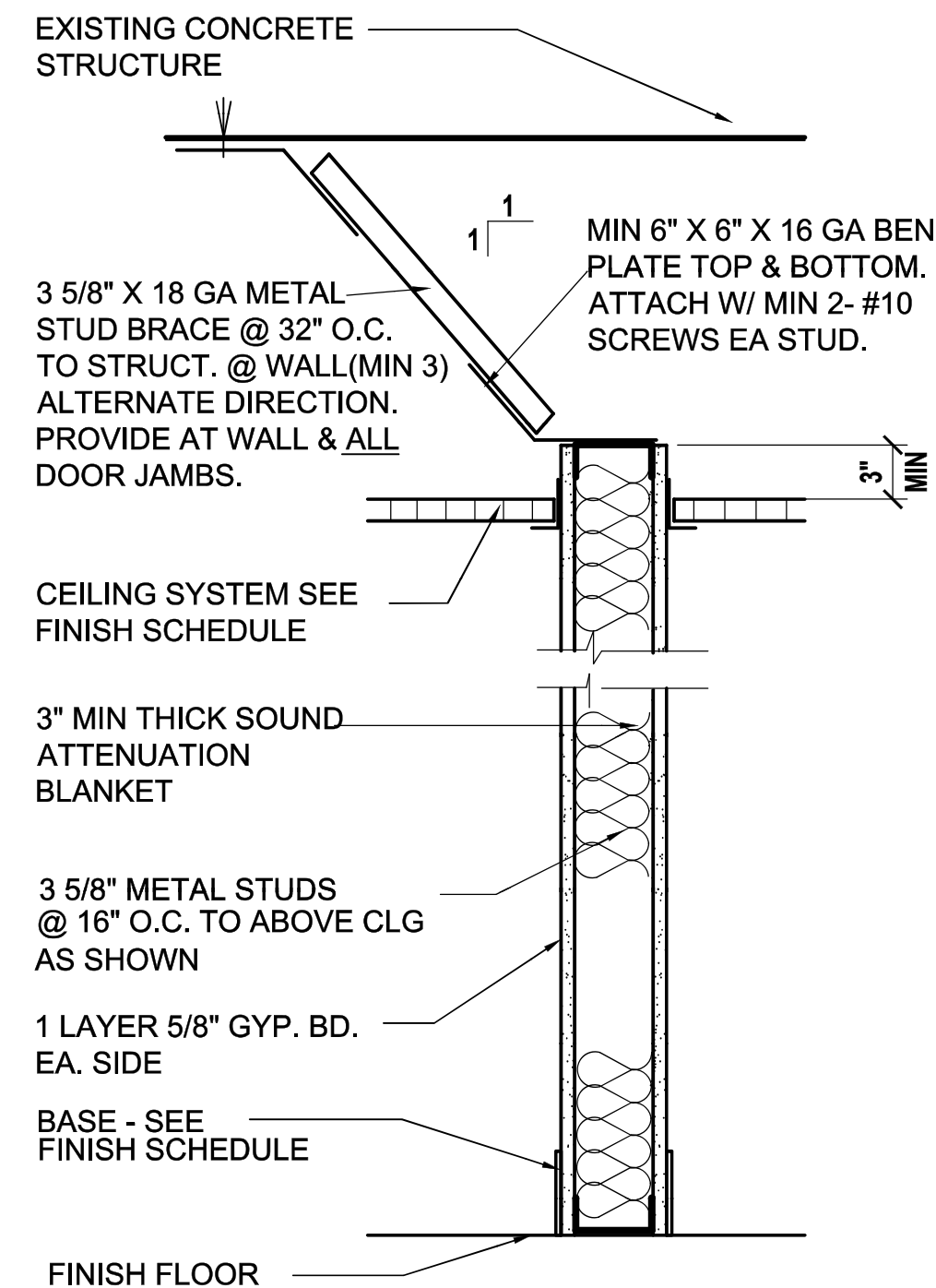


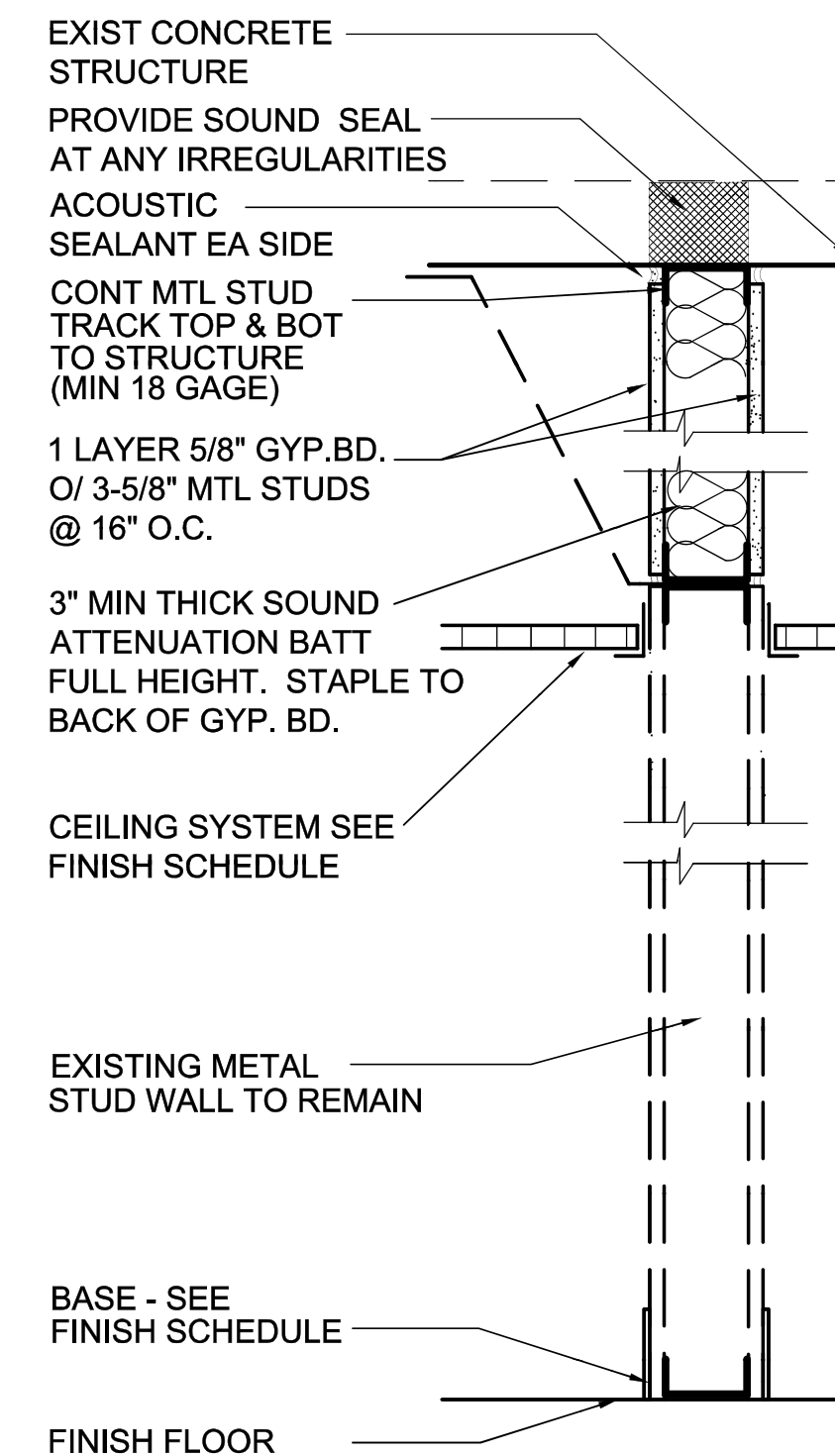
P-1 SOUND PARTITION
INTERIOR NON-LOAD BEARING.
SEAL ALL PENETRATIONS



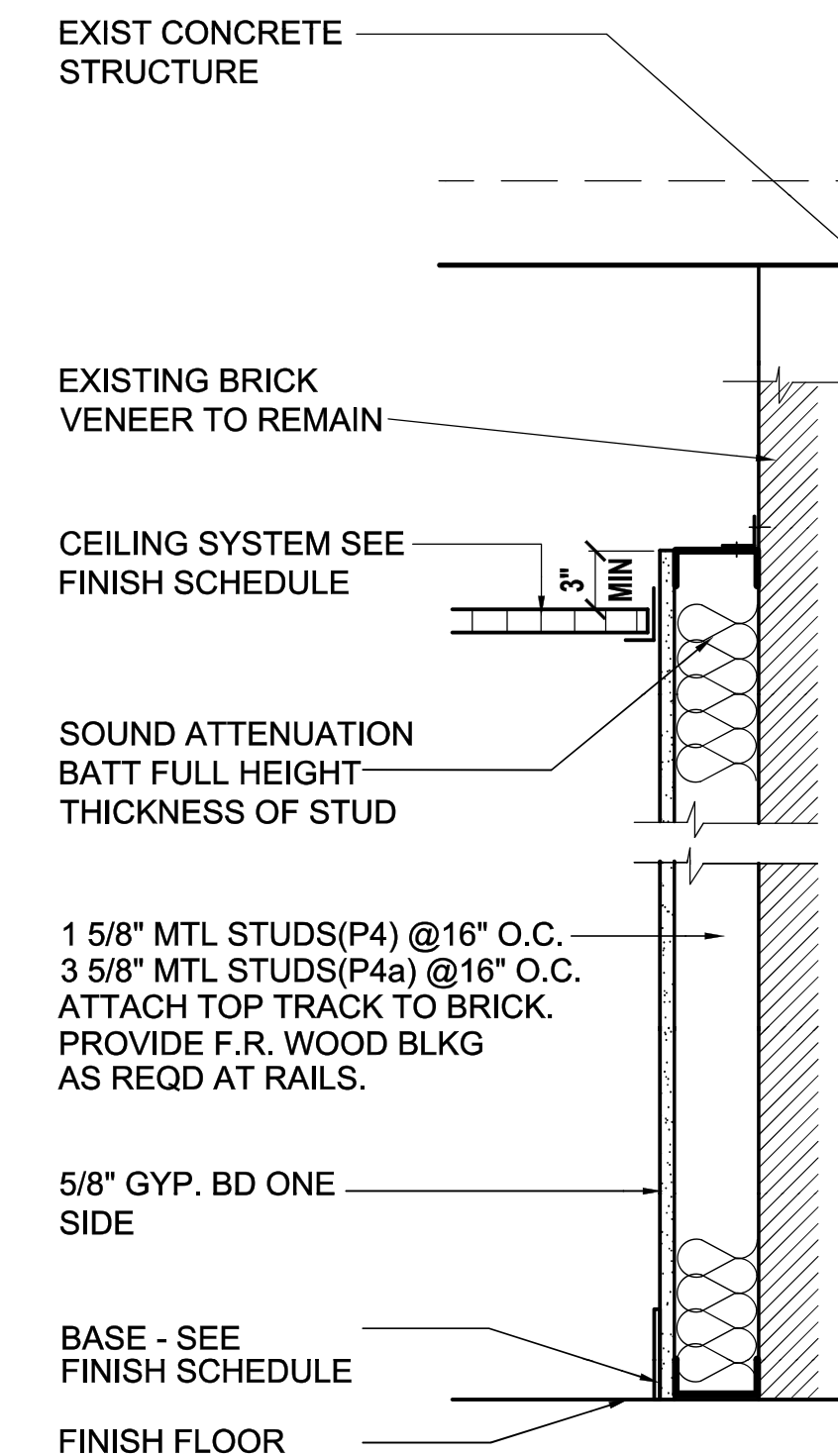
P-1a SOUND PARTITION
INTERIOR NON-LOAD BEARING.
SEAL ALL PENETRATIONS



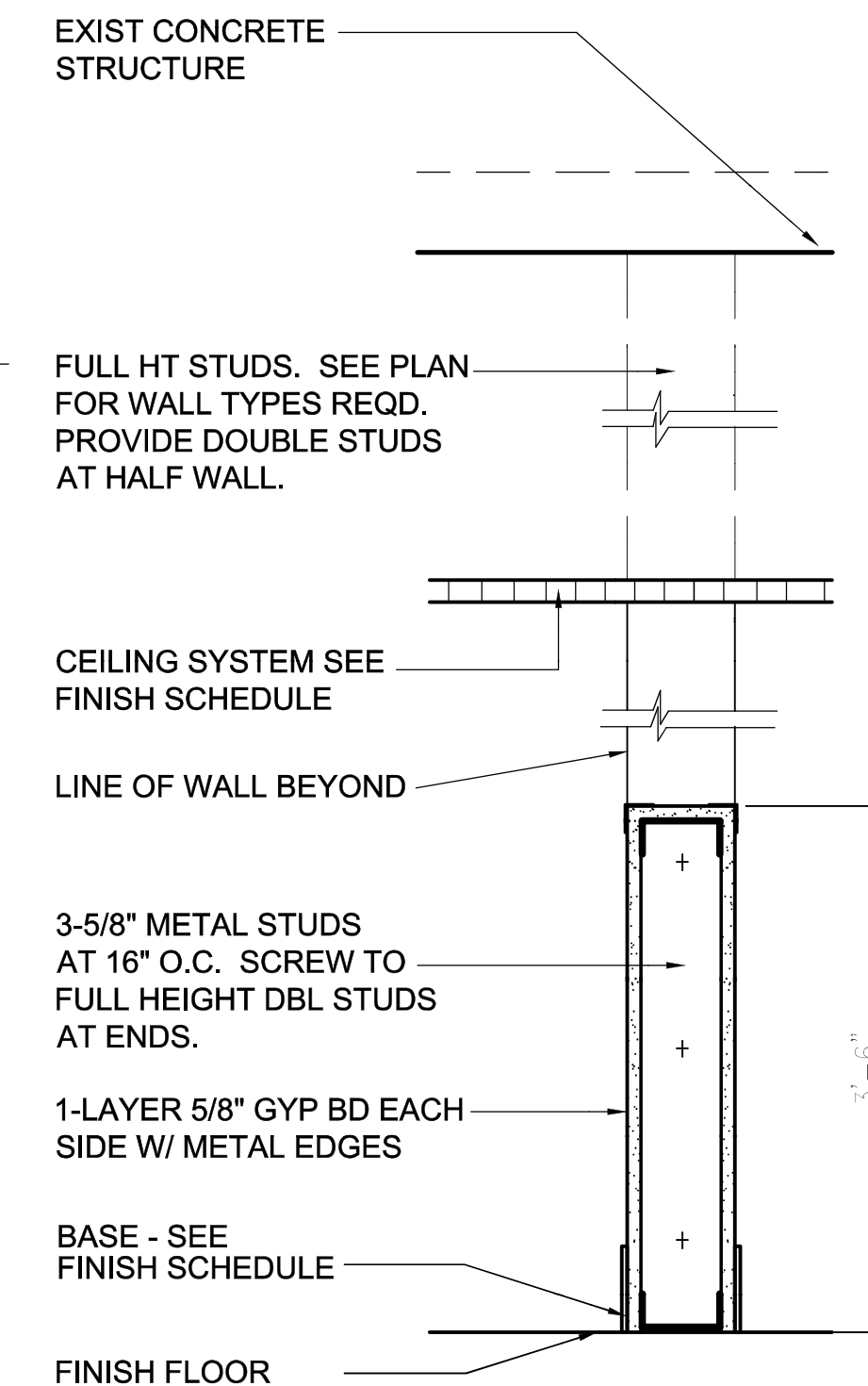
P-2
INTERIOR NON-LOAD BEARING



P-3 SOUND PARTITION
INTERIOR NON-LOAD BEARING
NEW WALL OVER EXISTING WALL



P-4
NEW 1-5/8" STUD FURRING
OVER EXISTING BRICK VENEER
P-4a
NEW 3-5/8" STUDS FURRING OVER
EXISTING BRICK VENEER

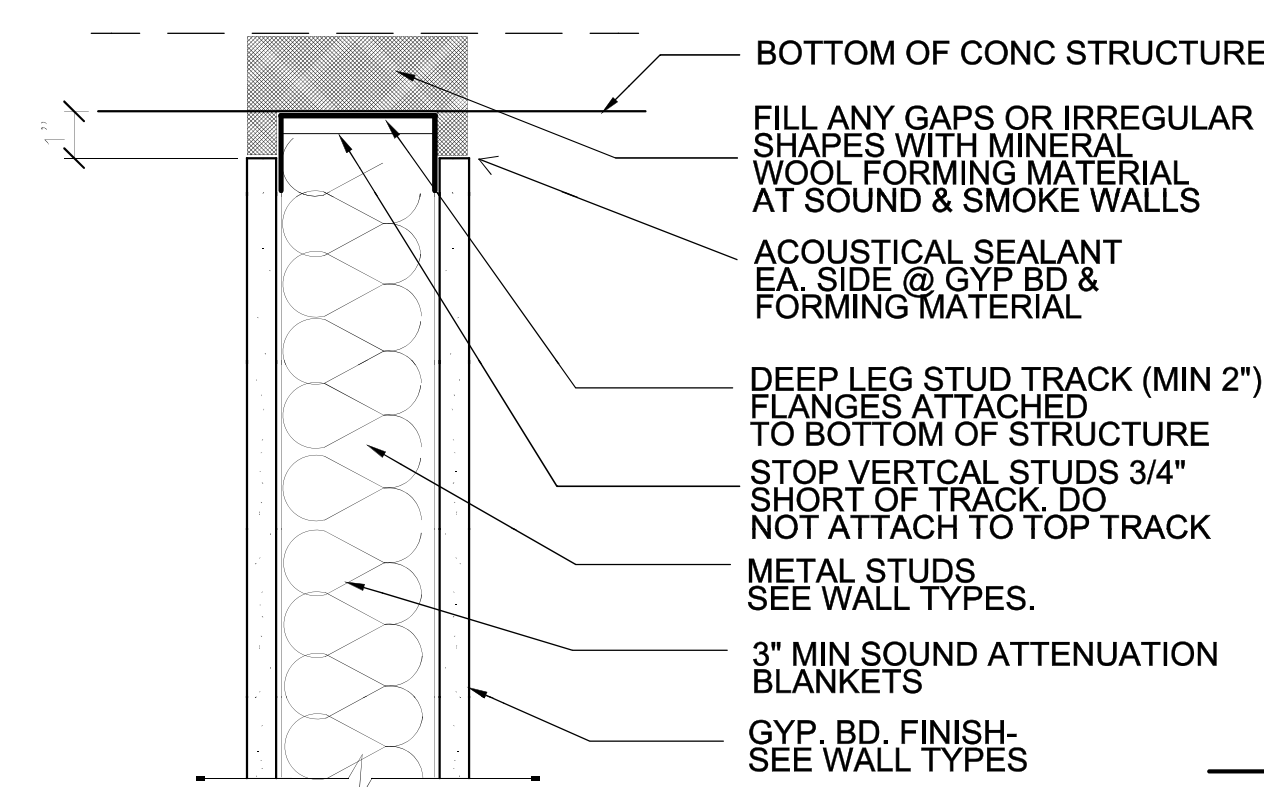


P-5
HALF WALL

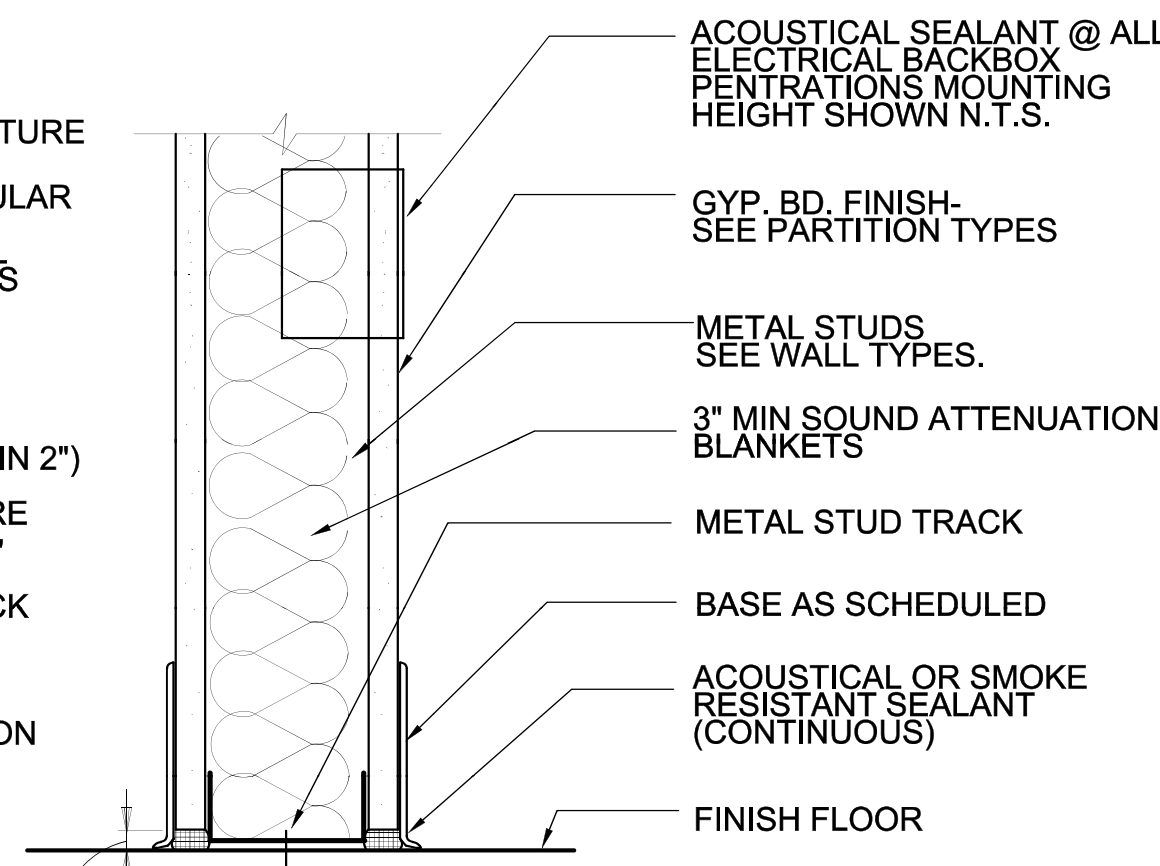
1 WALL TYPES
N.T.S.

SOUND PARTITIONS REQUIRE THE MINIMUM STC RATING AS FOLLOWS:
PHARMACY AREAS= 45, PHYSICAL THERAPY AREAS= 40, TOILETS, STORAGE & HOUSEKEEPING AREAS= 40, CONFERENCE ROOM, EDUCATION/TRAINING ROOMS= 45, ALL OTHER AREAS= 40.

NOTE:
ALLOW FOR 1/2" VERTICAL MOVEMENT
EITHER DIRECTION AT ROOF
AND FLOOR TYPICAL



2 WALL TO STRUCTURE DETAIL
3"=1'-0"

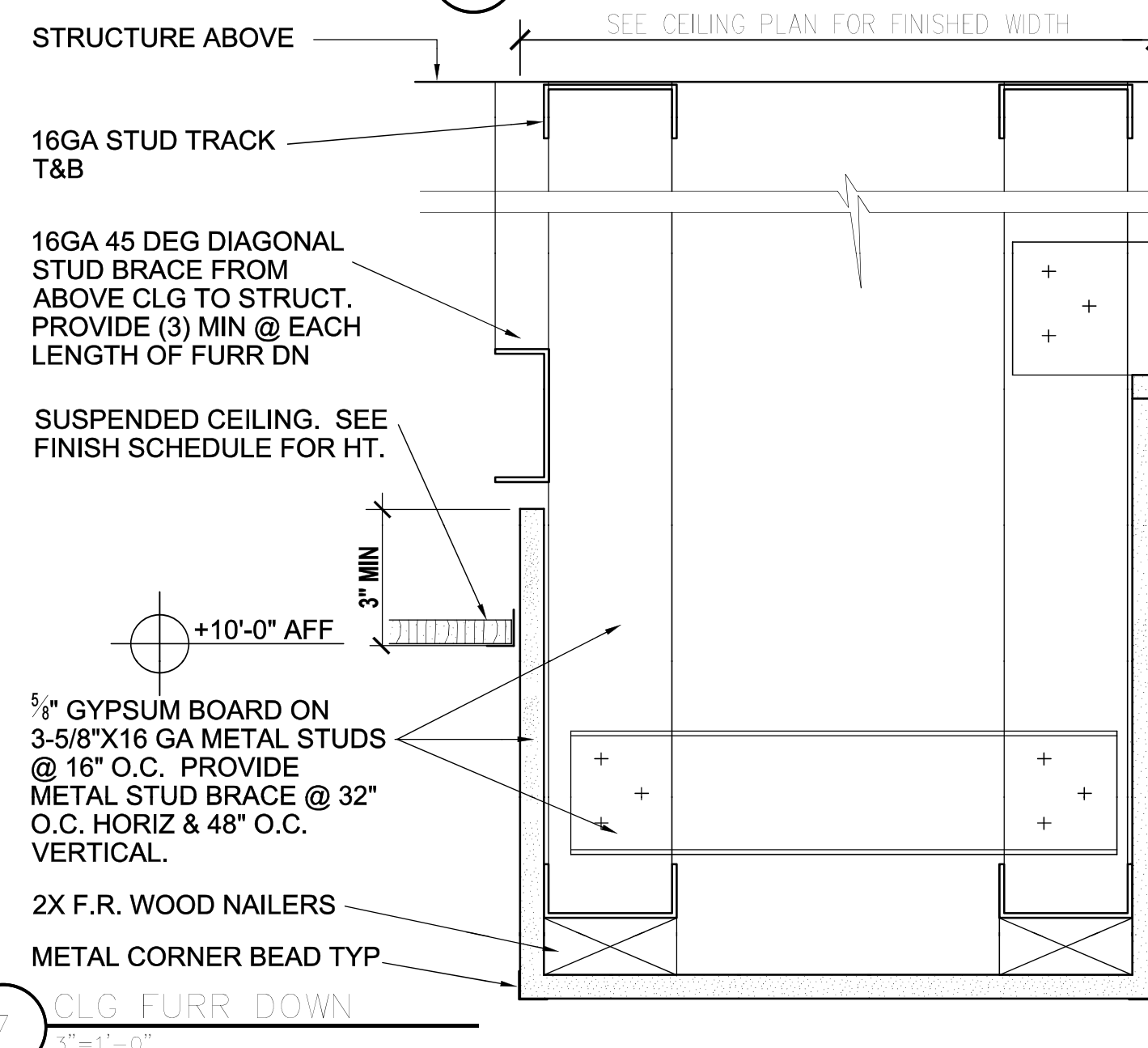


NOTE: METAL STUDS FOR INTERIOR PARTITIONS SHALL BE MIN SIZE AS INDICATED BELOW UNLESS NOTED OTHERWISE. STUD FABRICATOR SHALL SIZE FOR EXACT CONDITIONS & SUBMIT SHOP DRAWINGS FOR APPROVAL.

UNBRACED HEIGHT	MIN. METAL STUD SIZE & SPACING
LESS THAN 10'-0"	25 GA. 3 5/8" AT 16" O.C.
10'-0" TO 15'-0"	20 GA. 3 5/8" AT 16" O.C.
15'-0" TO 20'-0"	18 GA. 6" AT 16" O.C.
GREATER THAN 20'-0"	18 GA. 6" AT 12" O.C.

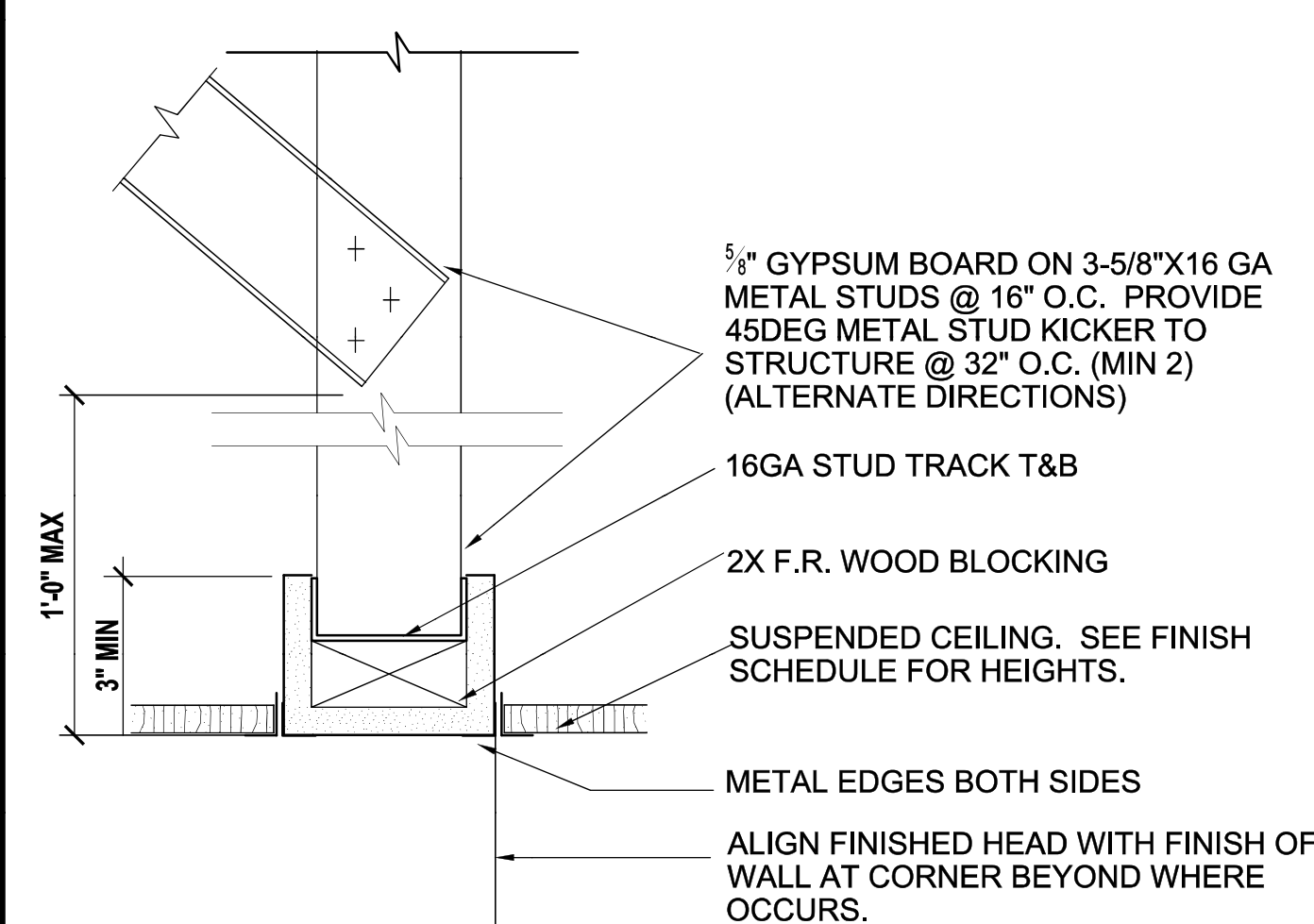
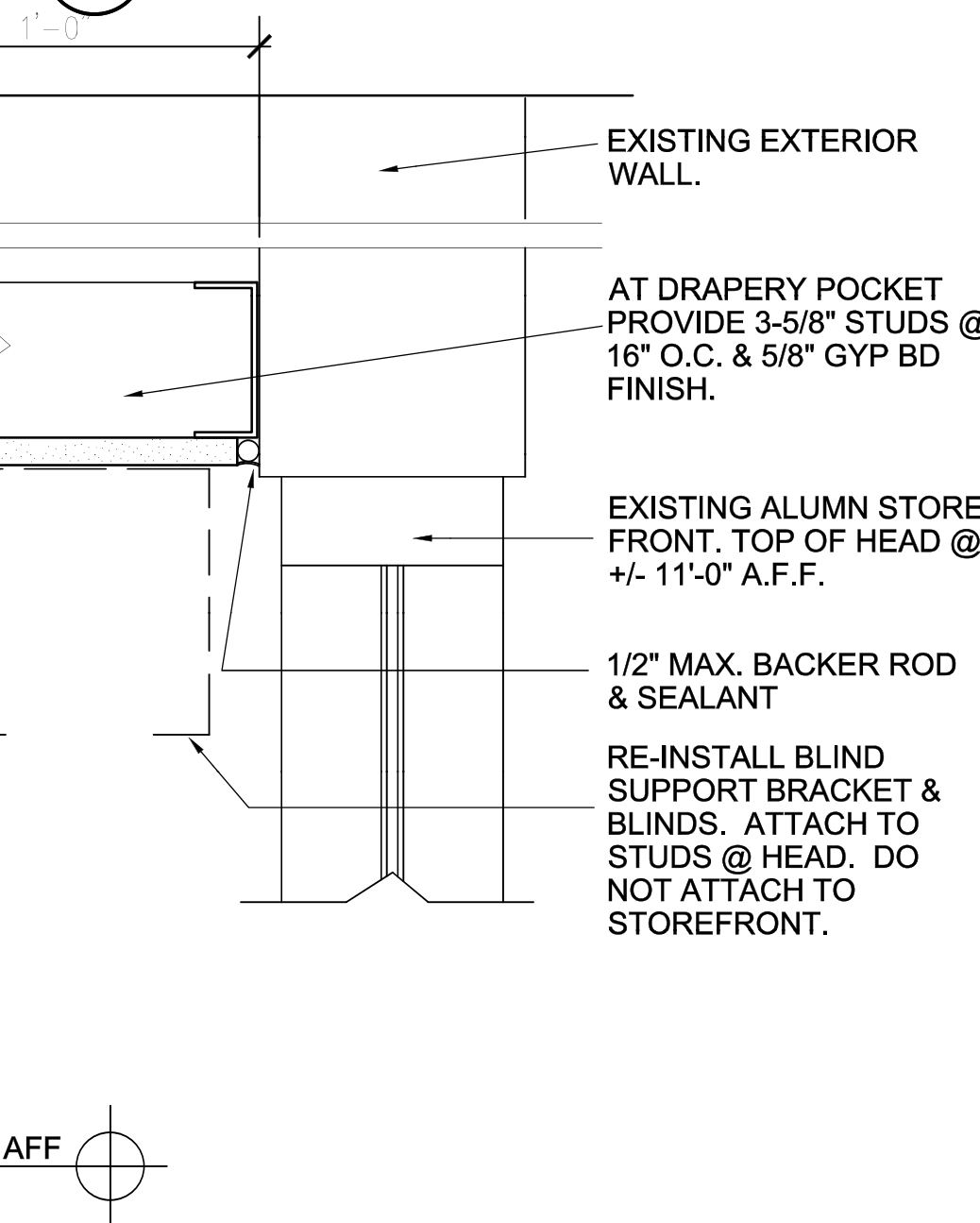
NOTE: LABEL ALL SMOKE & FIRE WALLS WITH 3" MIN HIGH RED TEXT, ABOVE CEILING, BOTH SIDES OF WALL.

3 STUD BACKING DETAIL
3"=1'-0"

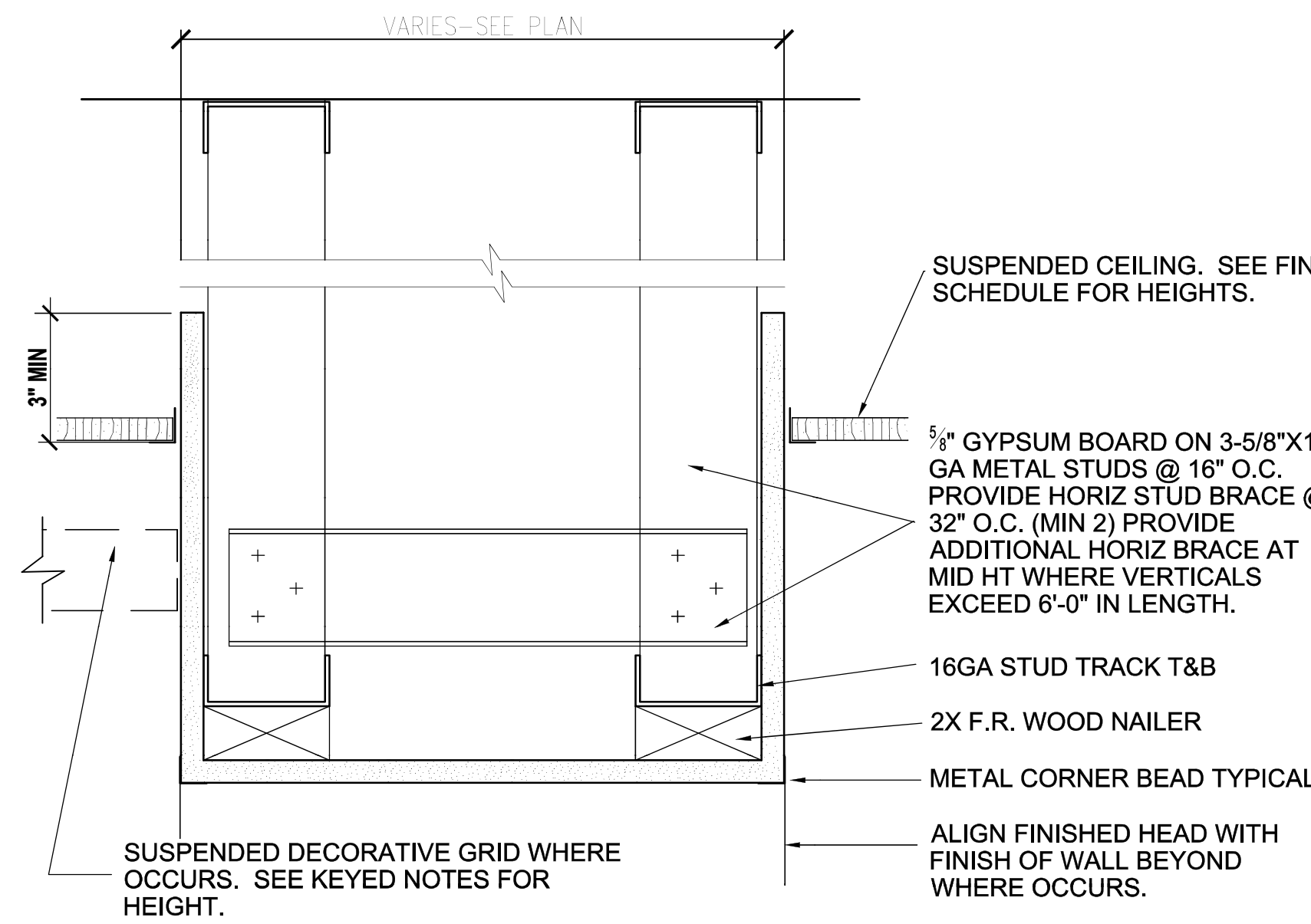


7 CLG FURR DOWN
3"=1'-0"

4 C.B. WALL EXPANSION JOINT
3"=1'-0"



5 GYP. BD. CEILING TRANSITION
3"=1'-0"



6 CEILING FURR DOWN BETWEEN WALLS
3"=1'-0"



LITTLE ROCK A.F.B.
ARKANSAS

GARVER ENGINEERS

1010 BATTERY STREET
LITTLE ROCK, ARKANSAS 72202
www.garverengineers.com
(501) 376-3633

CROMWELL

ARCHITECTS ENGINEERS
101 SOUTH SPRING ST
LITTLE ROCK, AR 72201
TELEPHONE 501-372-2900
FACSIMILE 501-372-0482

No.	Revision/Issue	Date	BY	APP'D

PROJECT TITLE REPAIR & RENOVATE MEDICAL CLINIC PH IV LITTLE ROCK AIR FORCE BASE JACKSONVILLE, ARKANSAS	SHEET TITLE WALL TYPES & DETAILS
DRAWN BY P.JL	LEAD DESIGNER K. TAYLOR
TECH. REVIEWER P.JL	PROJECT NUMBER NKAK#06-8006-4
DESIGNED BY P. LEDFORD	SHEET A-501
DATE JULY 1, 2008	SCALE AS NOTED
11 OF 50	