

KEYED TOILET ACCESSORIES:

GB1- 42" GRAB BAR. BOBRICK #B-6806-42

GB2- 36" GRAB BAR. BOBRICK #B-6806-36

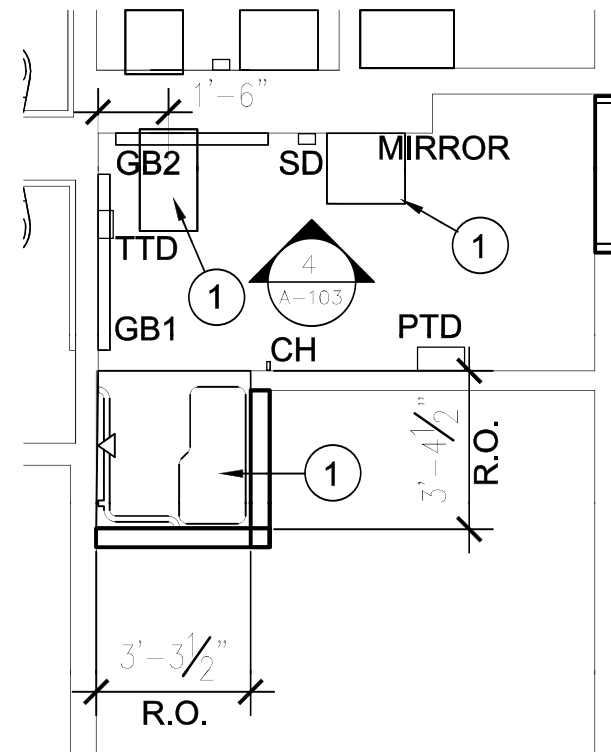
TTD- SURFACE MOUNTED TOILET TISSUE DISPENSER
PLASTIC FOR (2) 9" ROLLS. GPC #582-50 OR EQ.

SD- SURFACE MOUNTED SOAP DISPENSER
GOVERNMENT FURNISHED & INSTALLED

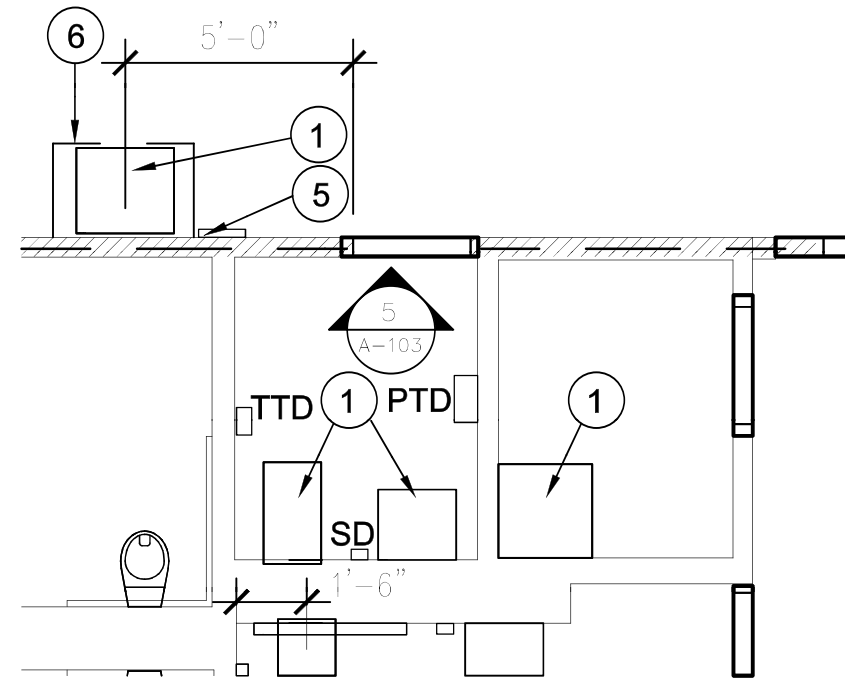
PTD- SURFACE MOUNTED PAPER TOWEL DISPENSER.
BOBRICK #B-262

CH- COAT/TOWEL HOOK. SURFACE MOUNTED @
3'-10" AFF IN TOILET D122. BOBRICK #B-6777

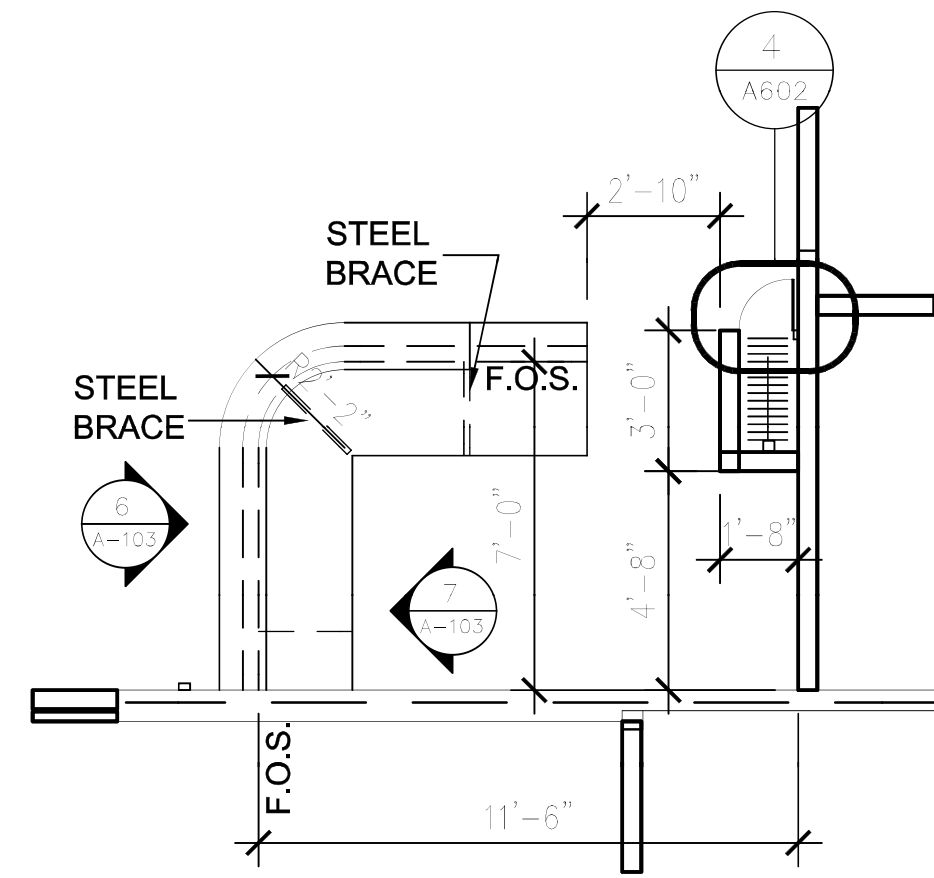
MIRROR- 24" X 36" FRAMED. SEE SPECIFICATIONS.



1 ENLARGED FLOOR PLAN
1/4"=1'-0"
RM D122

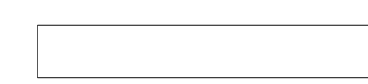


2 ENLARGED FLOOR PLAN
1/4"=1'-0"
RMS D120 & D121

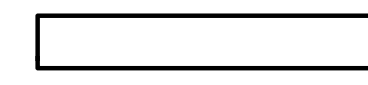


3 ENLARGED FLOOR PLAN
1/4"=1'-0"
RM F133

WALL LEGEND



EXISTING METAL STUD & GYP BD WALL TO REMAIN.
PROVIDE NEW FINISHES PER SCHEDULE. WALL
EXTENDS TO APPROXIMATELY 6" ABOVE CEILING



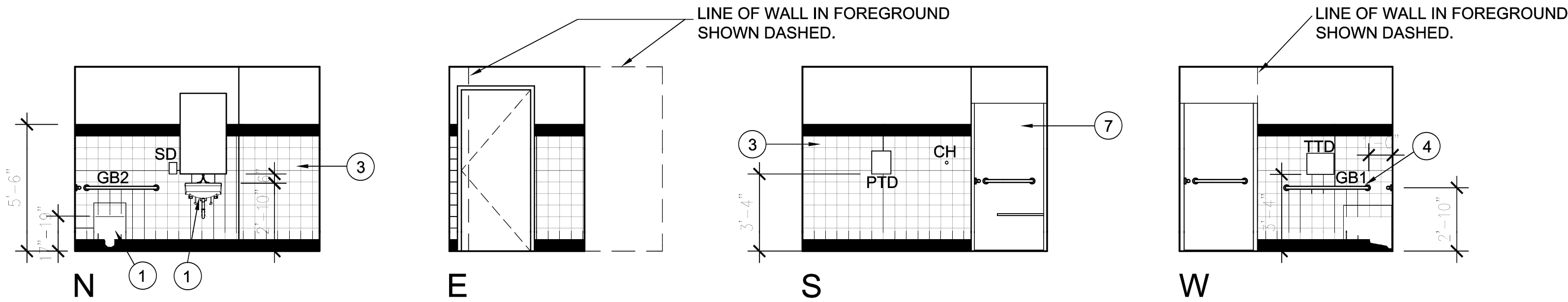
NEW METAL STUD & GYP BOARD WALL WITH
SOUND INSULATION FULL HEIGHT TO
STRUCTURE ABOVE.

GENERAL FLOOR PLAN NOTES:

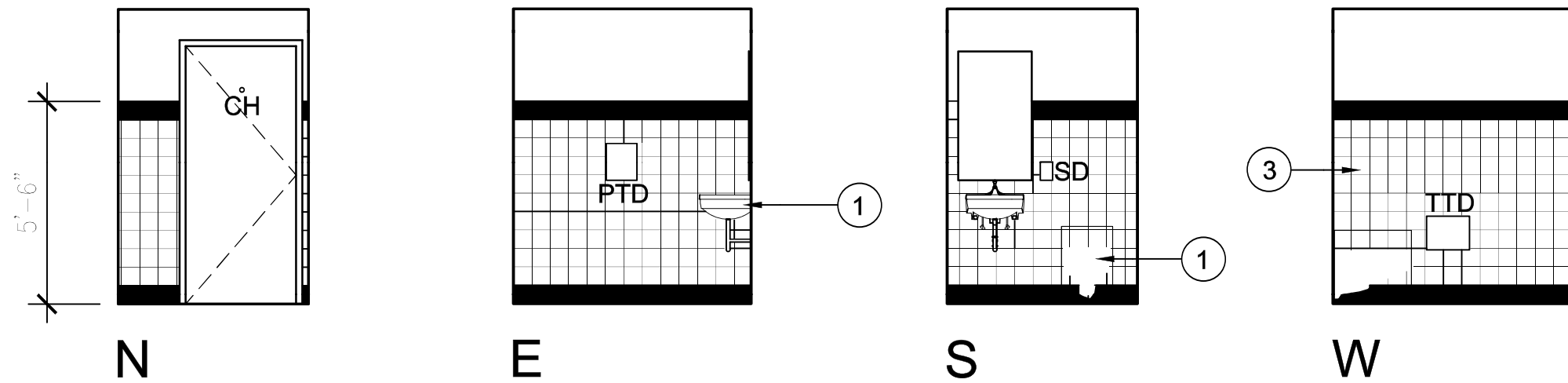
A. WHERE NEW WALLS ALIGNS WITH EXISTING WALLS CONTRACTOR
SHALL PROVIDE STUD WIDTHS AS REQUIRED TO MATCH OVERALL
EXISTING WALL THICKNESS SO THAT NEW FINISHES ALIGN FLUSH.

KEYED FLOOR PLAN & ELEVATION NOTES:

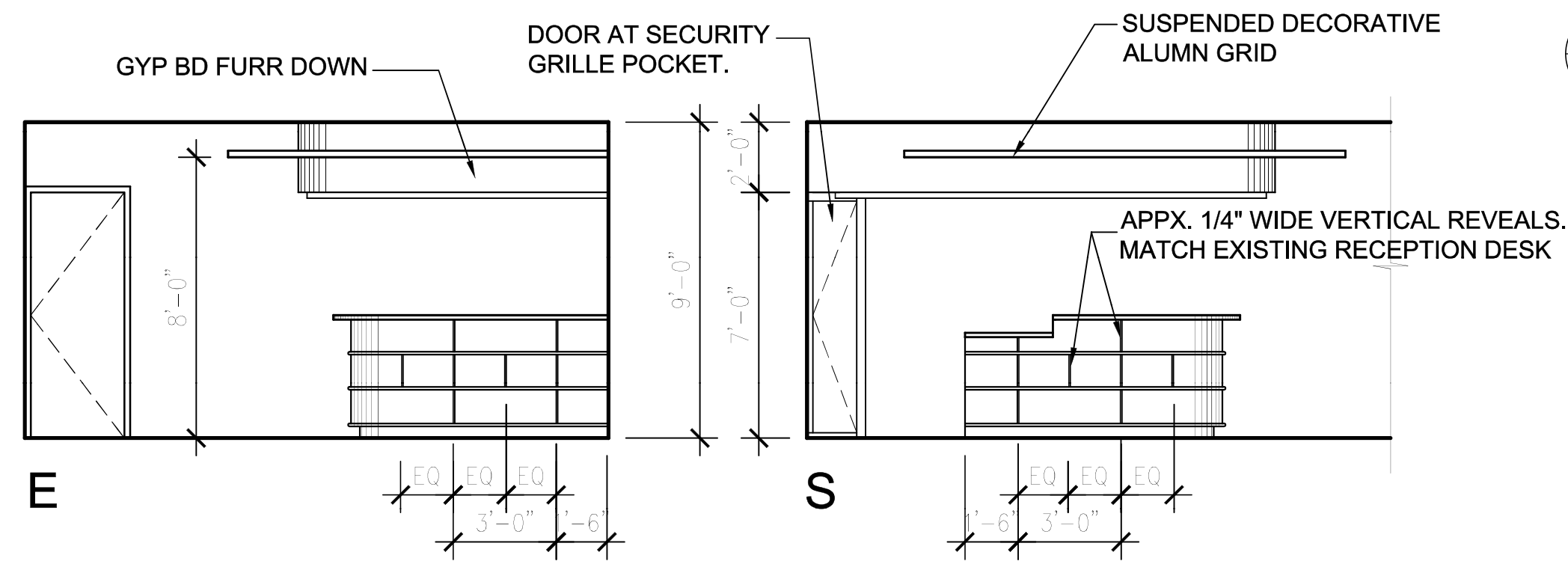
1. NEW PLUMBING FIXTURE. SEE PLUMBING DRAWINGS.
2. NOT USED.
3. TILE WAINSCOT. ACCENT TILE SHOWN SHADED.
4. NEW GRAB BARS.
5. NEW WALL MOUNTED WATER FILTER SYSTEM. SEE PLUMBING
DRAWINGS.
6. GOVERNMENT FURNISHED/GOVERNMENT INSTALLED MILLWORK.
CONTRACTOR SHALL COORDINATE SINK REQUIREMENTS WITH
THE GOVERNMENT'S MILLWORK VENDOR.
7. PRE-FABRICATED ADA ACCESSIBLE SHOWER UNIT. SEE PLUMBING
DRAWINGS.



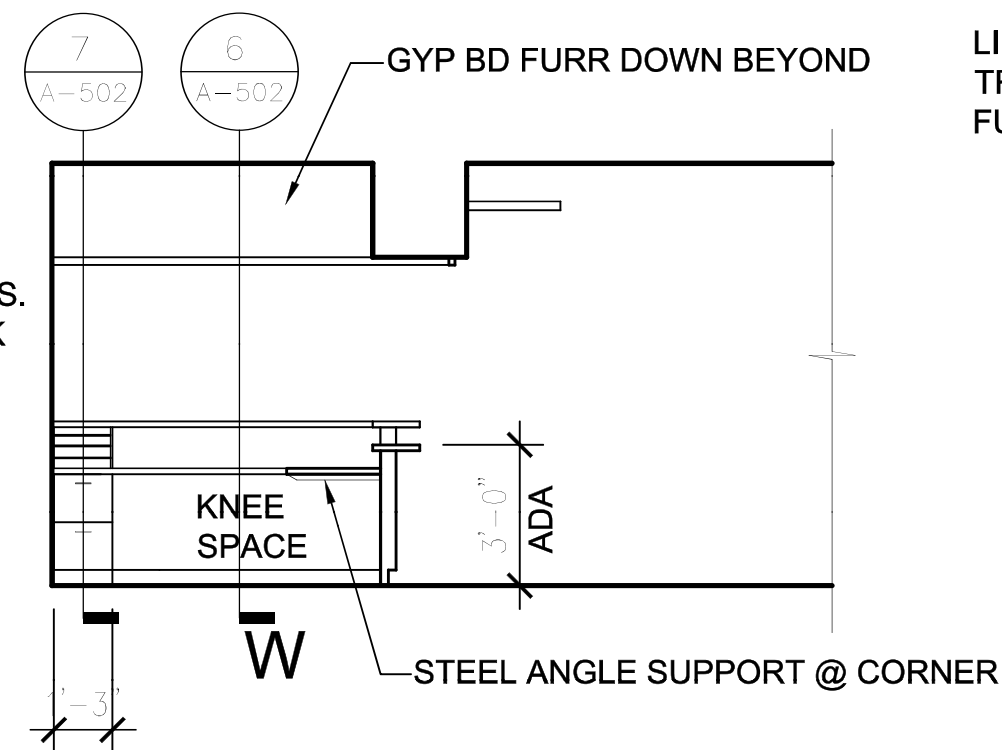
4 STAFF TOILET ROOM- ADA UNISEX
1/4"=1'-0"



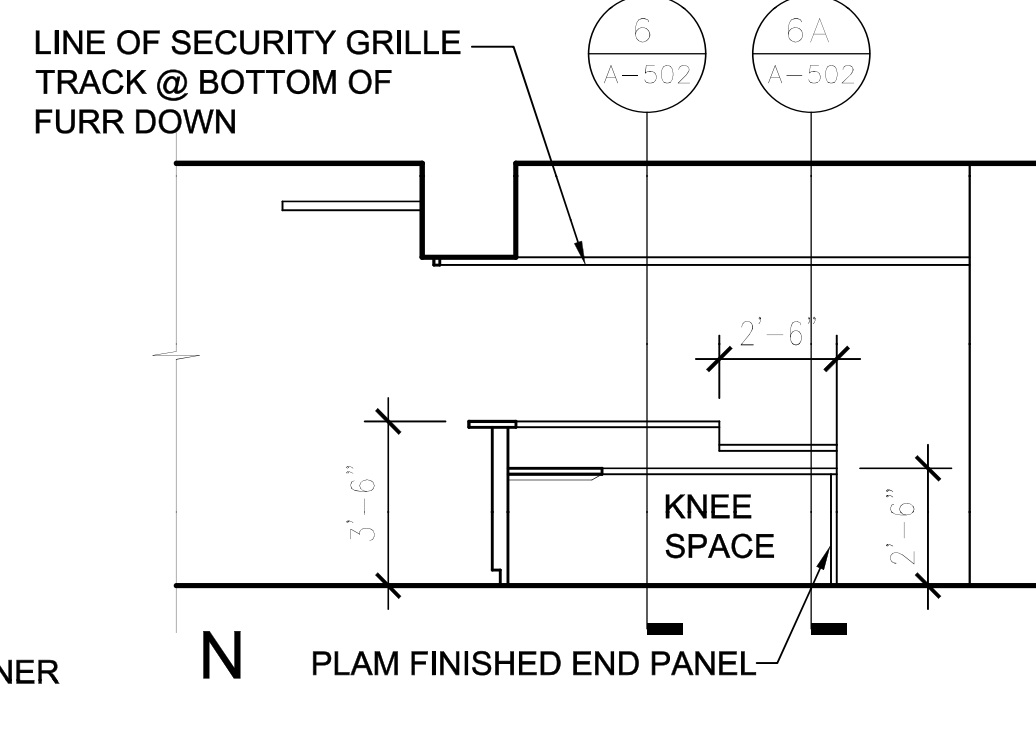
5 STAFF TOILET ROOM- UNISEX
1/4"=1'-0"



6 P.T. RECEPTION/WAITING
1/4"=1'-0"



7 P.T. RECEPTION/WAITING
1/4"=1'-0"



LITTLE ROCK A.F.B.
ARKANSAS

GARVER ENGINEERS

1010 BATTERY STREET
LITTLE ROCK, ARKANSAS 72202
www.garverengineers.com
(501) 376-3633

CROMWELL

ARCHITECTS ENGINEERS

101 SOUTH SPRING ST.
LITTLE ROCK, AR 72201
TELEPHONE 501-372-2900
FACSIMILE 501-372-0482

No.	Revision/Issue	Date	BY	APP'D

PROJECT TITLE
REPAIR & RENOVATE MEDICAL CLINIC PH IV
LITTLE ROCK AIR FORCE BASE
JACKSONVILLE, ARKANSAS

100% SUBMITTAL
SHEET TITLE

ENLARGED FLOOR PLANS &
INTERIOR ELEVATIONS

DRAWN BY PJL	LEAD DESIGNER K. TAYLOR
TECH. REVIEWER PJL	PROJECT NUMBER NKAK#06-8006-4
DESIGNED BY P. LEDFORD	SHEET A-103
DATE JULY 1, 2008	SCALE AS NOTED