



LITTLE ROCK A.F.B.
ARKANSAS

							APPD
							BY
							Date
							Revision/Issue
							No.

PROJECT TITLE REPAIR MEDICAL CENTER PH 3 LITTLE ROCK AFB, ARKANSAS		SHEET TITLE DOOR SCHEDULE	
DRAWN BY TM		LEAD DESIGNER AM	
TECH REVIEWER AM		PROJECT NUMBER NKAK 06-8001	
DESIGNED BY AM		SHEET A4.30	
DATE 8-11-06		13 of 37	
SCALE N/A			

DOOR & OPENING SCHEDULE											
DOOR NO.	ROOM NAME	DOOR					GLASS TYPE	HARD-WARE GROUP	FRAME		REMARKS
		ELEV.	MAT'L	WIDTH	HEIGHT	LABEL			MAT'L	ELEV.	
LEVEL ONE											
A101	STAIRS	B	WD	3'-10"	7'-0"	C	AT	C-01	EXIST	EXIST	
A104	OFFICE	A	WD	3'-0"	7'-0"	C		0-04	HM	A	
A109A	OFFICE	B	WD	3'-0"	7'-0"	C	AT	0-04	HM	A	
A109B	OFFICE	B	WD	3'-0"	7'-0"	C	AT	0-04	HM	A	
A109C	OFFICE	B	WD	3'-0"	7'-0"	C	AT	0-04	HM	A	
A109D	OFFICE	B	WD	3'-0"	7'-0"	C	AT	0-04	HM	A	
A109	CORRIDOR	B	WD	3'-0"	7'-0"	C	AT	0-02	EXIST	EXIST	CARD READER SEE NOTE #4
A111	OFFICE	B	WD	2'-8"	7'-0"	C	AT	0-04	EXIST	EXIST	
A112	SUPPLY	A	WD	2'-6"	7'-0"	C		S-01	EXIST	EXIST	
A113A	WAITING	B	WD	3'-0"	7'-0"	C	AT	0-04	HM	A	
A113B	WAITING	B	WD	3'-0"	7'-0"	C	AT	0-06	HM	A	ELECTRIFIED CYLINDER LOCK
A116	CORRIDOR	B	WD	3'-0"	7'-0"	C	AT	C-01	HM	A	
A117	OFFICE	E	WD	3'-0"	7'-0"	C		0-04	EXIST	EXIST	
A118	OFFICE	E	WD	3'-0"	7'-0"	C		0-04	EXIST	EXIST	
A119	OFFICE	E	WD	3'-0"	7'-0"	C		0-04	EXIST	EXIST	
A120	STORAGE	A	WD	2'-6"	7'-0"	C		S-01	EXIST	EXIST	
C101	OFFICE	E	WD	3'-0"	7'-0"	C	AT	0-04	HM	A	
C102	OFFICE	E	WD	2'-6"	7'-0"	C	AT	0-04	EXIST	EXIST	
C103	OFFICE	E	WD	2'-6"	7'-0"	C	AT	0-04	EXIST	EXIST	
C104	OFFICE	E	WD	2'-6"	7'-0"	C	AT	0-04	EXIST	EXIST	
C105	OFFICE	E	WD	3'-0"	7'-0"	C	AT	0-04	HM	A	
C106	OFFICE	E	WD	3'-0"	7'-0"	C	AT	0-04	HM	A	
C107	OFFICE	E	WD	3'-0"	7'-0"	C	AT	0-04	HM	A	
C108	OFFICE	E	WD	3'-0"	7'-0"	C	AT	0-04	EXIST	EXIST	
C109	OFFICE	E	WD	3'-0"	7'-0"	C	AT	0-04	EXIST	EXIST	
C110	OFFICE	E	WD	3'-0"	7'-0"	C	AT	0-04	EXIST	EXIST	
C111	OFFICE	E	WD	3'-10"	7'-0"	C	AT	0-04	HM	A	
C112D	CORRIDOR	B	WD	3'-10"	7'-0"	C	AT	0-02	EXIST	EXIST	CARD READER SEE NOTE #4
C113	OFFICE	E	WD	3'-0"	7'-0"	C	AT	0-04	HM	A	
C114	OFFICE	E	WD	3'-0"	7'-0"	C	AT	0-04	HM	A	
C115	OFFICE	E	WD	3'-0"	7'-0"	C	AT	0-04	HM	A	
C116	OFFICE	E	WD	3'-0"	7'-0"	C	AT	0-04	HM	A	CARD READER SEE NOTE #4
C117	NEW COMM.	A	WD	6'-0"	7'-0"	C		S-01	HM	A	DOUBLE DOORS
C119	WAITING	E	WD	3'-0"	7'-0"	C	AT	0-04	HM	A	CARD READER SEE NOTE #4
C123	OFFICE	E	WD	3'-0"	7'-0"	C	AT	0-04	EXIST	EXIST	
C124	OFFICE	E	WD	3'-0"	7'-0"	C	AT	0-04	EXIST	EXIST	
C125	STORAGE	A	WD	2'-8"	7'-0"	C		S-01	HM	A	
C126A	CORRIDOR	C	WD	3'-0"	7'-0"	C	AT	X-01	EXIST	EXIST	DOUBLE DOORS
C126B	CORRIDOR	C	WD	3'-0"	7'-0"	C	AT	X-01	EXIST	EXIST	DOUBLE DOORS
C127	CONFERENCE	A	WD	3'-0"	7'-0"	C		0-04	EXIST	EXIST	
C128	JANITOR	A	WD	2'-6"	7'-0"	C		S-01	EXIST	EXIST	SEE NOTE #5
C129	STORAGE	A	WD	2'-6"	7'-0"	C		S-01	HM	A	SEE NOTE #5
C130	OFFICE	A	WD	3'-0"	7'-0"	C		0-04	EXIST	EXIST	
C131	OFFICE	A	WD	3'-0"	7'-0"	C		0-04	EXIST	EXIST	
C132	OFFICE	A	WD	3'-0"	7'-0"	C		0-04	EXIST	EXIST	
C133A	CORRIDOR	D	AL	PAIR 3'-10"	7'-0"	C	AT	C-02		A	ALUMINUM DOOR/FRAME SEE NOTE #6
C133B	CORRIDOR	B	WD	3'-10"	7'-0"	C	AT	0-02	EXIST	EXIST	CARD READER SEE NOTE #4
C134	TOILET	A	WD	3'-0"	7'-0"	C		T-01	HM	A	SEE NOTE #5
C135A	BREAK	B	WD	3'-0"	7'-0"	C	AT	P-04	EXIST	EXIST	SEE NOTE #5
C136	OFFICE	A	WD	3'-0"	7'-0"	C		0-04	EXIST	EXIST	CARD READER
C143	OFFICE	A	WD	3'-0"	7'-0"	C		0-04	HM	A	
C146	OFFICE	A	WD	4'-0"	7'-0"	C		0-04	EXIST	EXIST	
C147	TOILET	A	WD	3'-0"	7'-0"	C		T-01	HM	A	SEE NOTE #5
C148	TOILET	A	WD	2'-8"	7'-0"	C		T-01	HM	A	SEE NOTE #5
C149	LAB	A	WD	3'-0"	7'-0"	C		0-04	HM	A	SEE NOTE #5
C153	STORAGE	A	WD	3'-0"	7'-0"	C		S-01	HM	A	SEE NOTE #5
C154	LAB	B	WD	2'-8"	7'-0"	C		0-02	HM	A	CARD READER SEE NOTE #5, #4
C158A	CORRIDOR	B	WD	3'-0"	7'-0"	C	AT	C-01	EXIST	EXIST	DOUBLE DOORS
C158B	CORRIDOR	B	WD	3'-10"	7'-0"	C	AT	C-01	HM	A	
C158C	CORRIDOR	C	WD	3'-0"	7'-0"	C	AT	X-01	EXIST	EXIST	DOUBLE DOORS
C159A	DIGITAL MAMMO.	A	WD	4'-0"	7'-0"	C		0-04	HM	A	SEE NOTE #5
C159B	DIGITAL MAMMO.	A	WD	3'-0"	7'-0"	C		0-04	HM	A	SEE NOTE #5
C160	DIGITAL XRAY	A	WD	6'-0"	7'-0"	C		0-05	HM	A	DOUBLE DOORS; LEAD LINED SEE NOTE #5
C161	DRESSING ROOM	A	WD	3'-0"	7'-0"	C		0-04	HM	A	SEE NOTE #5
C162	ULTRASOUND	A	WD	3'-0"	7'-0"	C		0-04	HM	A	SEE NOTE #5
C163	STORAGE	A	WD	2'-8"	7'-0"	C		S-01	HM	A	SEE NOTE #5
C164	DRESSING ROOM	A	WD	3'-0"	7'-0"	C		0-04	HM	A	SEE NOTE #5
C165	DRESSING ROOM	A	WD	3'-0"	7'-0"	C		0-04	HM	A	SEE NOTE #5
C165A	CORRIDOR	B	WD	3'-0"	7'-0"	C	AT	C-01	HM	A	
C166	DRESSING ROOM	A	WD	3'-0"	7'-0"	C		0-04	HM	A	SEE NOTE #5
C167	DIGITAL XRAY	A	WD	6'-0"	7'-0"	C		0-05	HM	A	DOUBLE DOORS; LEAD LINED SEE NOTE #5
C168	TOILET	A	WD	3'-0"	7'-0"	C		0-05	HM	A	LEAD LINED SEE NOTE #5
C169	TOILET	A	WD	3'-0"	7'-0"	C		T-01	HM	A	SEE NOTE #5
C170	CORRIDOR	B	WD	3'-0"	7'-0"	C	AT	C-01	EXIST	EXIST	DOUBLE DOORS
C178A	RECORDS	B	WD	3'-0"	7'-0"	C	AT	0-03	HM	A	CARD READER SEE NOTE #4
C178B	RECORDS	B	WD	3'-0"	7'-0"	C	AT	0-03	EXIST	EXIST	CARD READER SEE NOTE #4
C179	PROVIDER	A	WD	4'-0"	7'-0"	C		0-04	HM	A	
C180	TECH. OFFICE	A	WD	3'-0"	7'-0"	C		0-04	HM	A	
C182	NGIOC OFFICE	A	WD	3'-0"	7'-0"	C		0-04	EXIST	EXIST	

WINDOW SCHEDULE				
ROOM NAME	ELEV.	TL. LENGTH	HEIGHT	REMARKS
XRAY ROOMS C160 & C167	A	1'-6"	2'-0"	LEAD GLASS (1.89MM LEAD EQUIVALENT)

SHUTTER SCHEDULE NOTES:

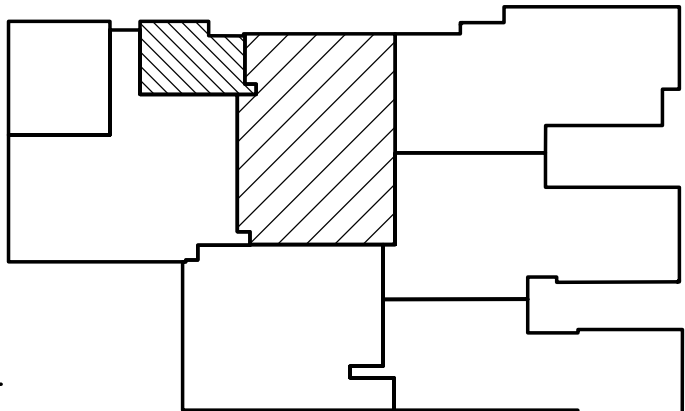
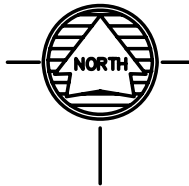
- ALL SIDE FOLDING CLOSURES SHALL HAVE A LEAD MEMBER AT THE PULL SIDE, A FLOATING END AT THE OPPOSITE END, A FLOOR STOP TO TERMINATE THE MOVEMENT OF THE FLOAT END, AND INTERMEDIATE MEMBERS PLACED EVENLY ACROSS THE LENGTH OF THE CLOSURE NOT TO EXCEED 10'-0".
- ALL TRACKS AND STRIKE CHANNELS SHALL BE MOUNTED TO BE FLUSH WITH THE WALL OR CEILING INTO WHICH THEY ARE MOUNTED. NOTE: ALL PHASES WERE SURFACE MOUNTED TRACK
- THE MINIMUM TRACK RADIUS FOR SIDE FOLDING CLOSURES IS 10". THE CENTERLINE OF THE CEILING TRACK MUST BE A MINIMUM 5" FROM THE NEAREST OBSTRUCTION.

DOOR SCHEDULE NOTES:

- ALL DOOR FRAMES SHALL BE NEW UNLESS NOTED AS EXISTING. FIELD VERIFY OPENING SIZE. STAIN DOOR LEAF. PATCH AND PAINT EXISTING FRAMES.
- UNDERCUT ALL INTERIOR DOORS BY 1" EXCEPT FOR FIRE RATED DOORS.
- EXISTING DOOR TRANSOMS ARE TO BE REMOVED. INFILL WALL AND PREP FOR NEW FINISHES.
- BEST LOCK HID CARD READER TO BE TIED TO EXISTING SYSTEM.
- NEW HM DOOR FRAMES TO BE "TERMINATED STOP" TO MATCH EXISTING AS SCHEDULED.
- ALUMINUM DOOR & FRAME IS PART OF GLAZED PARTITION SYSTEM.
- ALL NEW AND EXISTING DOOR FRAMES SHALL BE PAINTED TO MATCH PHASE A.
- ALL DOORS SHALL BE STAINED.
- ALL DOORS 1 HR RATED C LABEL.

SIDE FOLDING CLOSURES										
					TRACK					
ROOM NAME	ELEV.	TL. LENGTH	OPEN HEIGHT	PANEL HEIGHT		LENGTH	RADIUS	WIDTH	DEPTH	REMARKS
RECEPTION C183	B	24'-3/4"	7'-6"	6'-4 1/2"	SEGMENT 1	3'-10"	N/A	1 1/2"	1 7/8"	
					SEGMENT 2	1'-1 3/4"	11 3/16"			
					SEGMENT 3	10'-10 1/2"	N/A			
					SEGMENT 4	1'-2 1/4"	1'-1 3/4"			
					SEGMENT 5	13'-7"	17'-1 1/8"			

KEYPLAN
N.T.S.



AS BUILTS