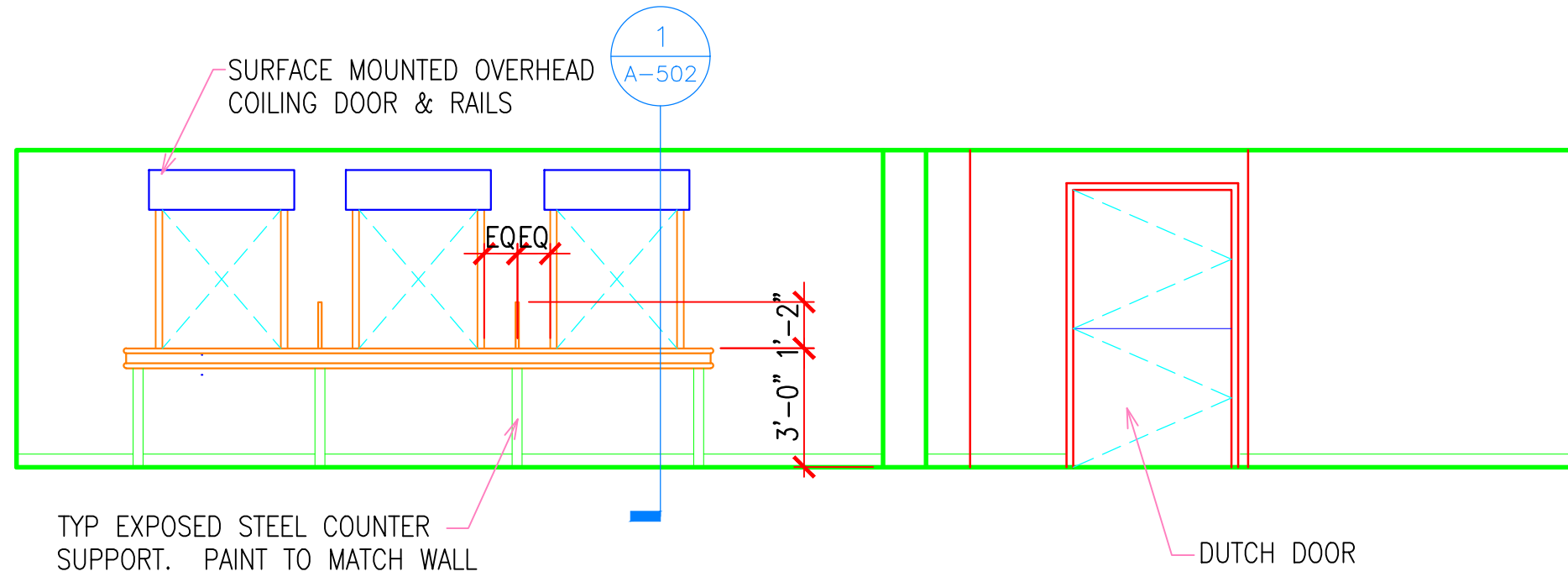
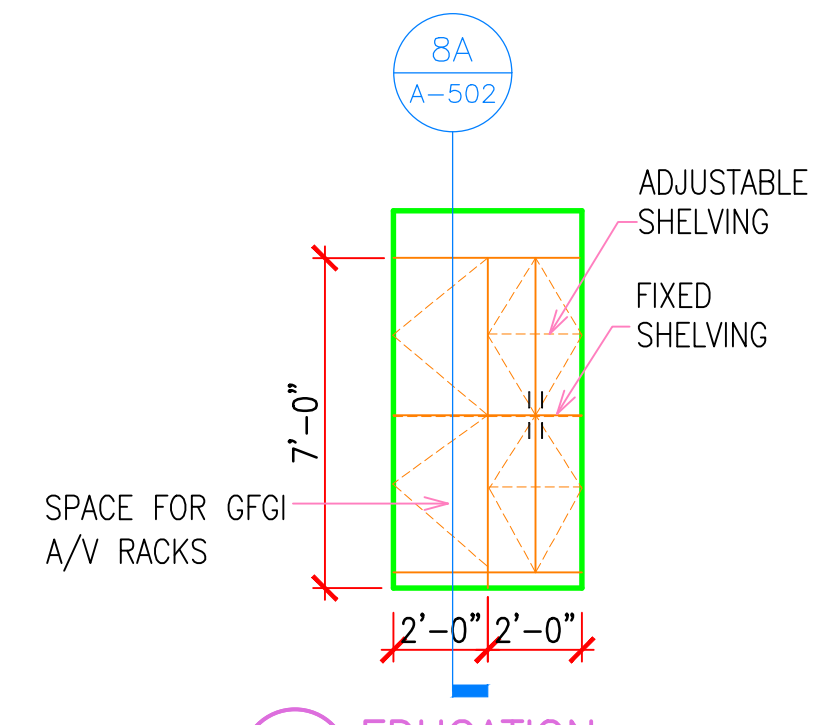


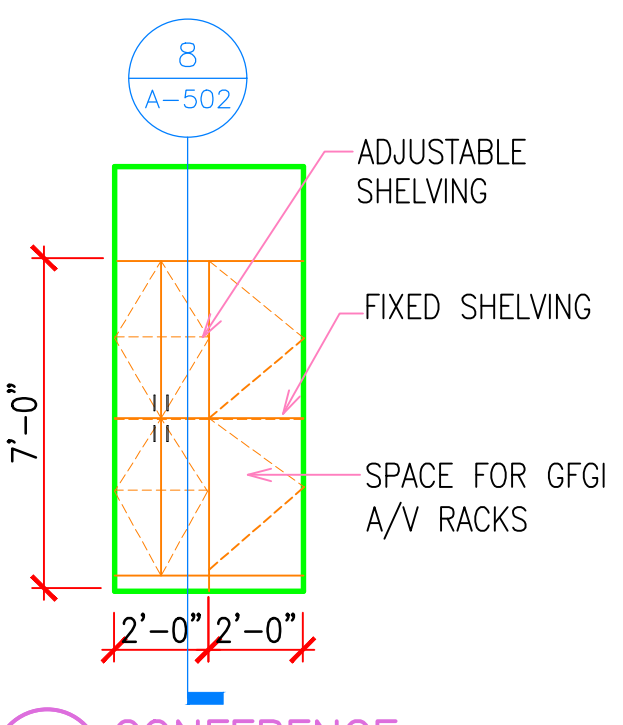
1 LOBBY
1/4"=1'-0"



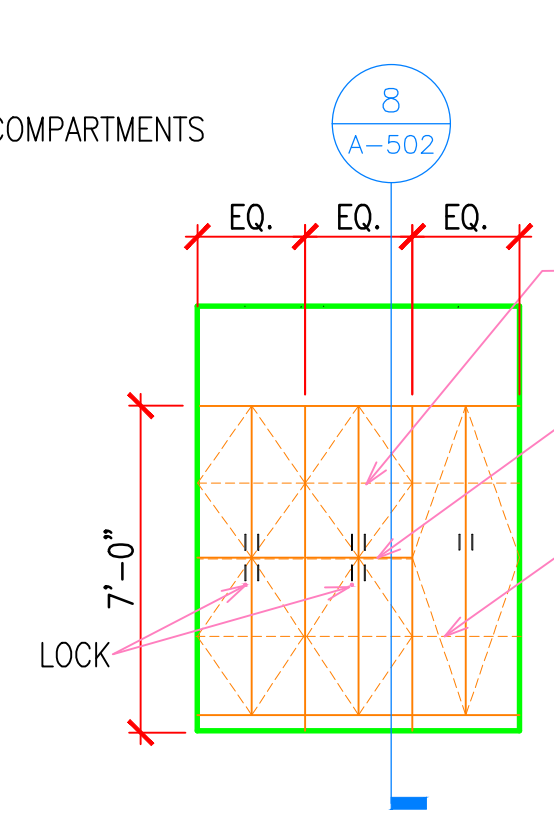
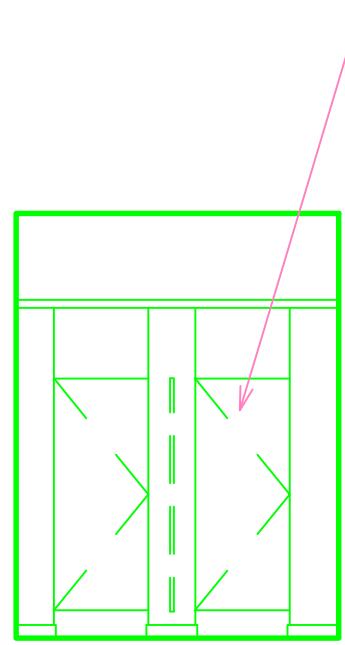
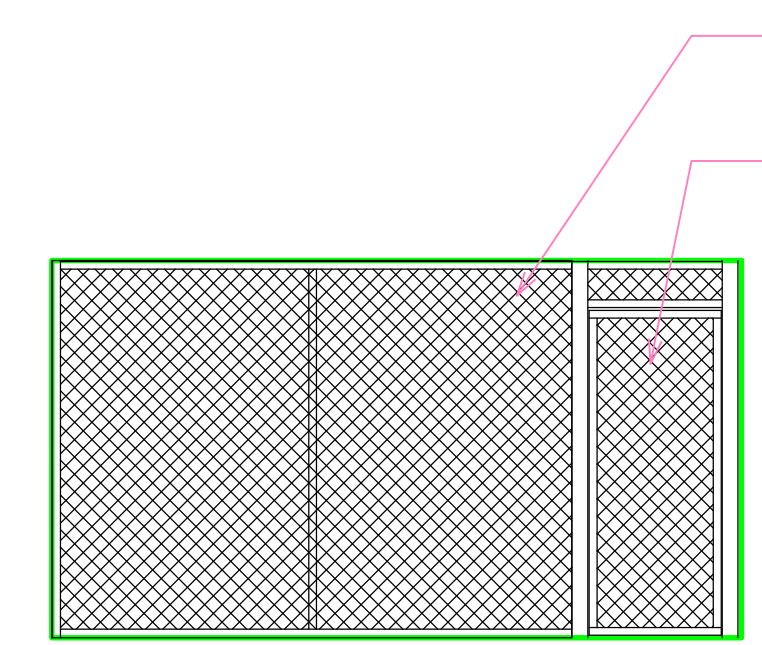
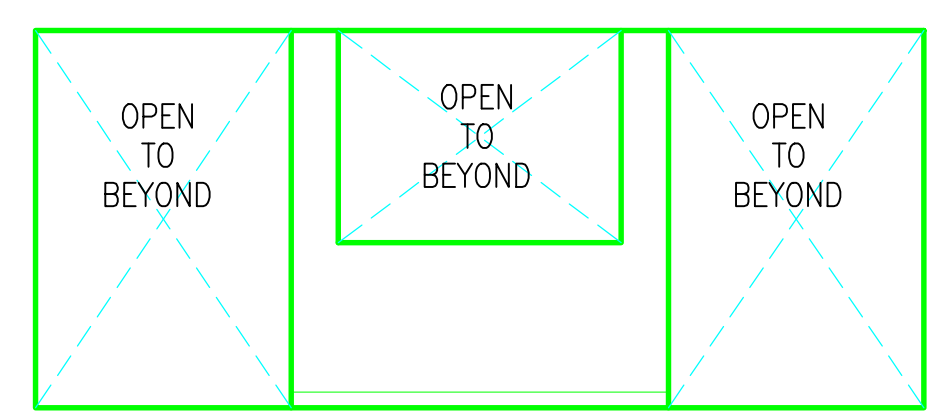
2 REFILL PHARMACY
1/4"=1'-0"



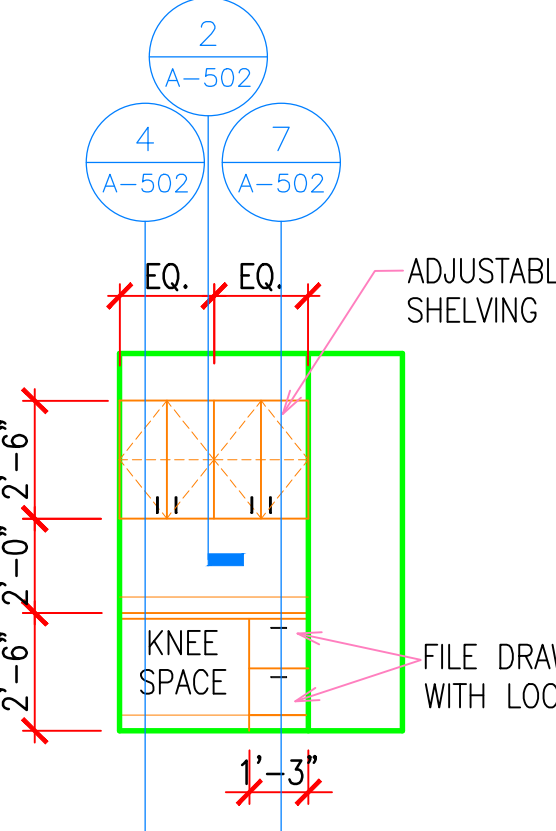
3 EDUCATION
1/4"=1'-0"



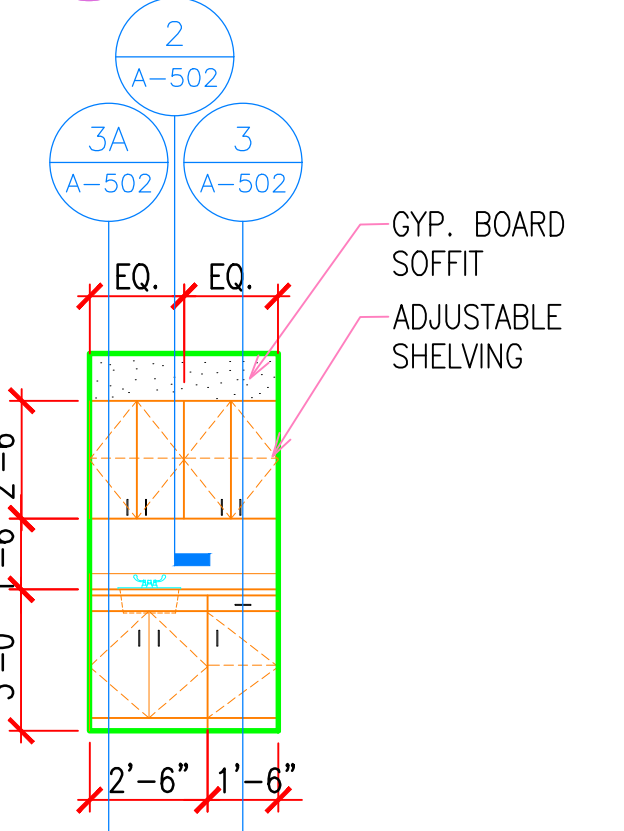
4 CONFERENCE
1/4"=1'-0"



8 P.T. THERAPY GYM
1/4"=1'-0"



9 OBSERVATION
1/4"=1'-0"

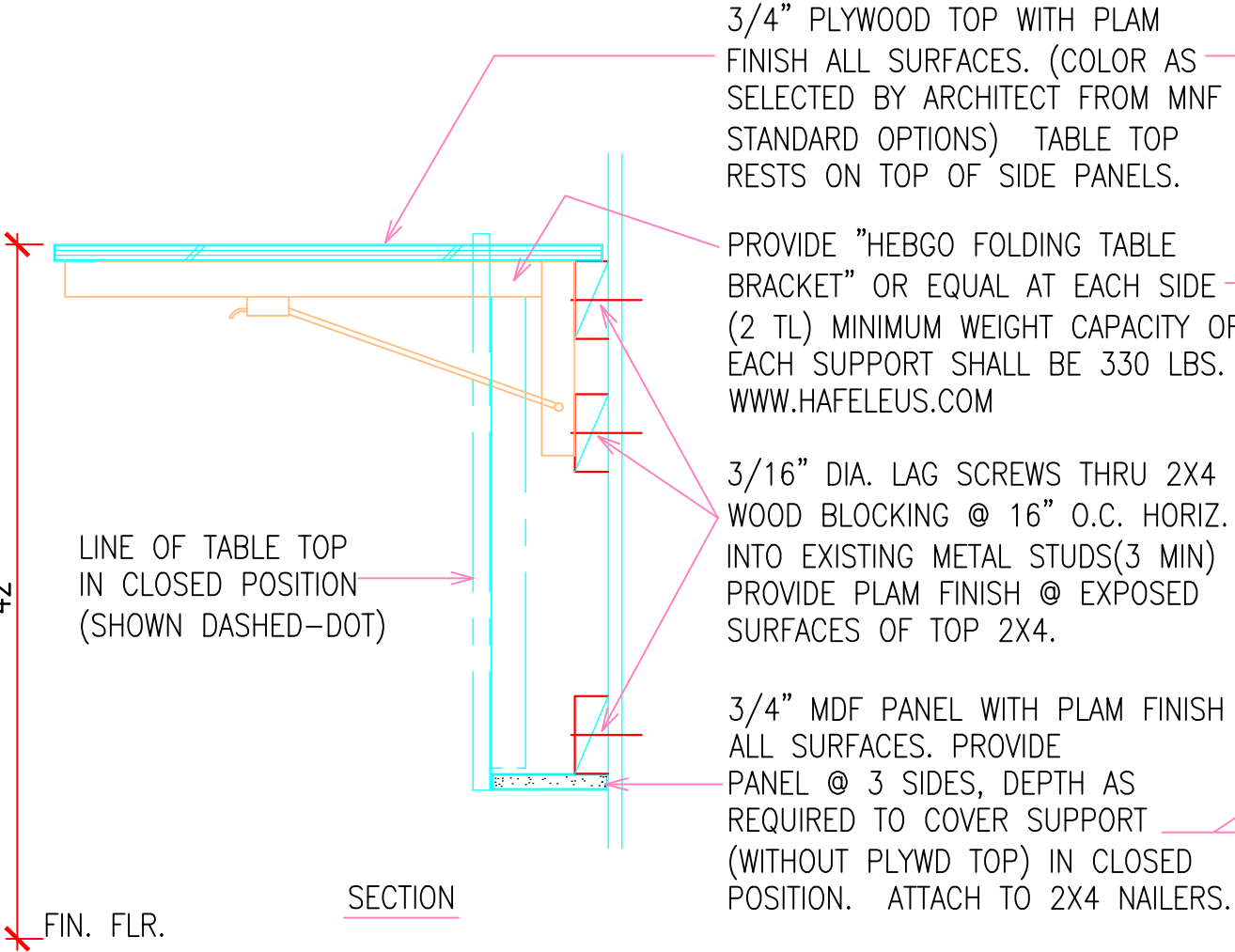


10 TRAINING
1/4"=1'-0"

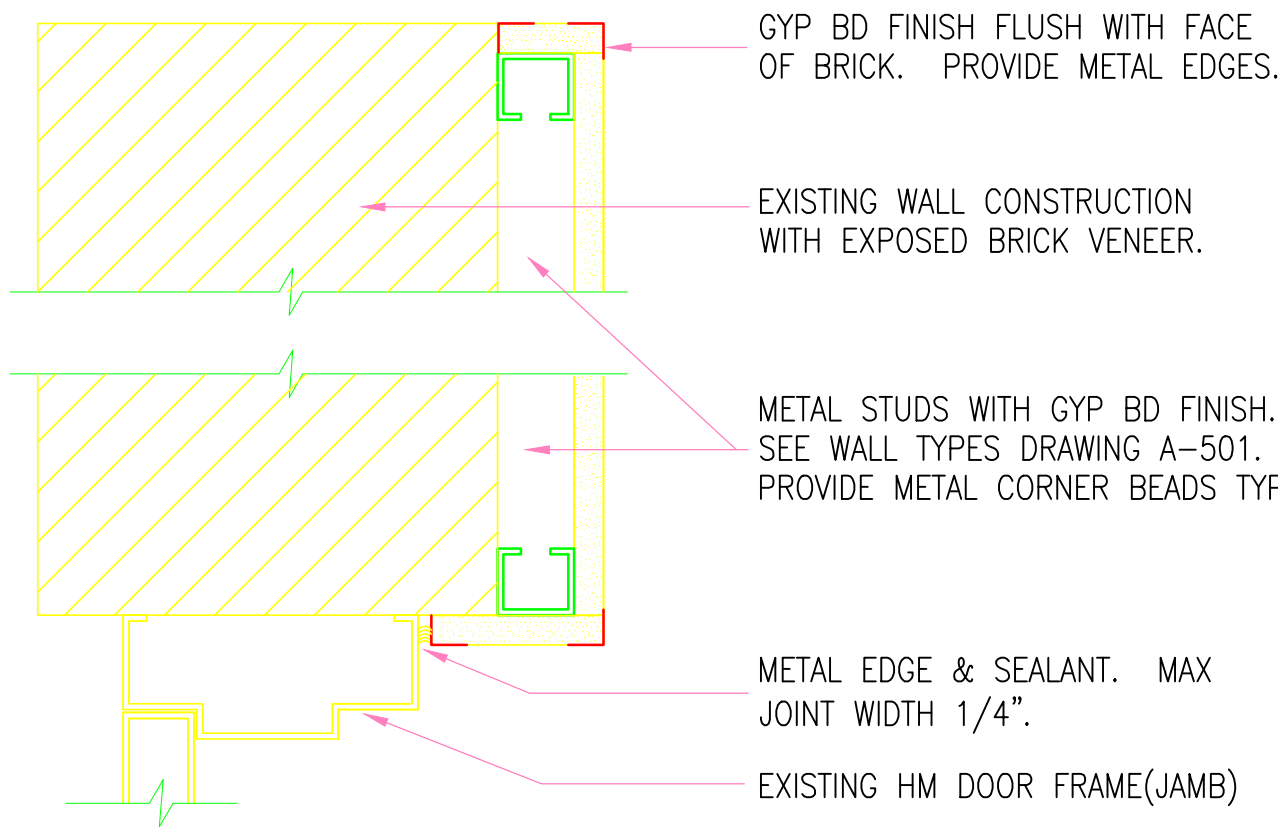
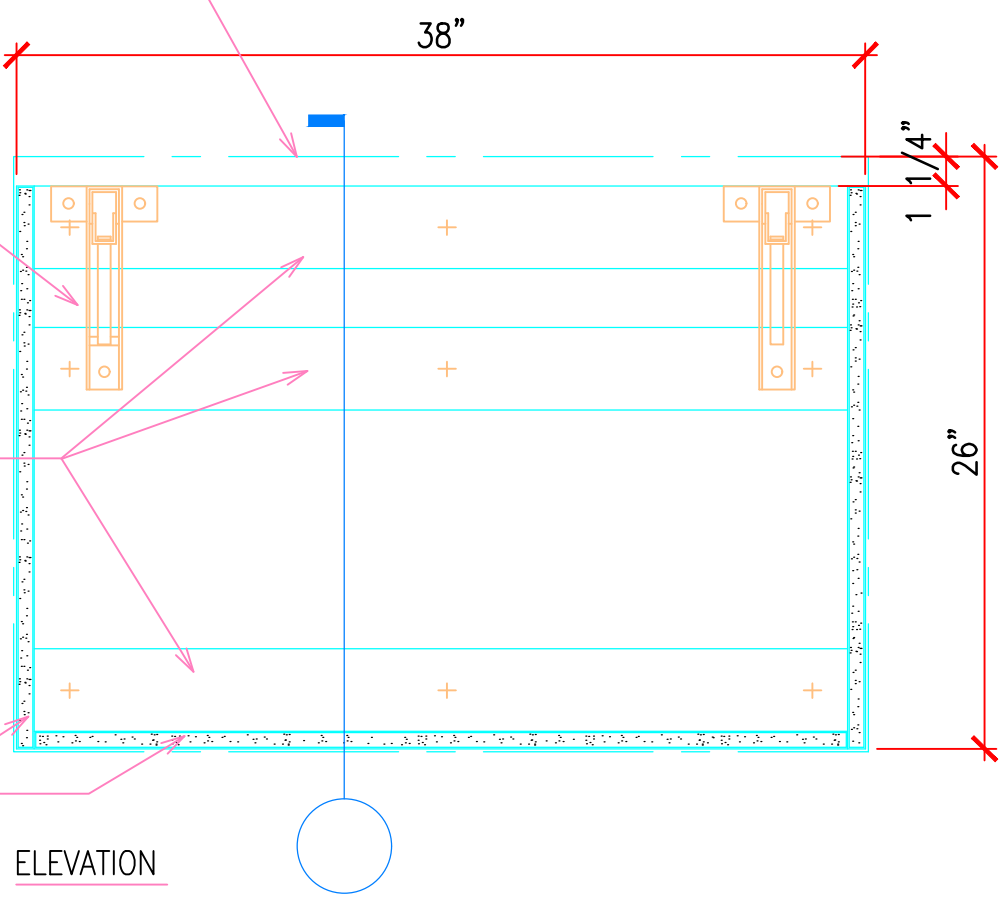
5 LOGISTICS ACQUISITION
1/4"=1'-0"

6 REFILL PHARMACY SECURE STG
1/4"=1'-0"

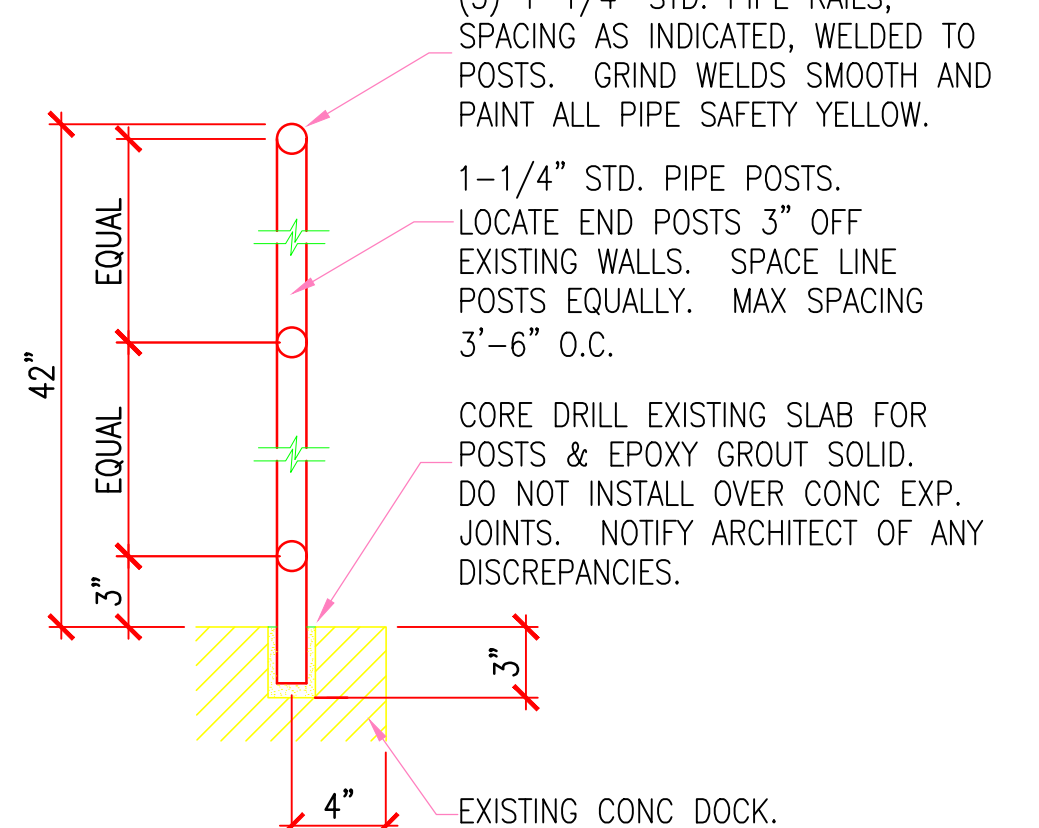
7 DRESSING-P.T.
1/4"=1'-0"



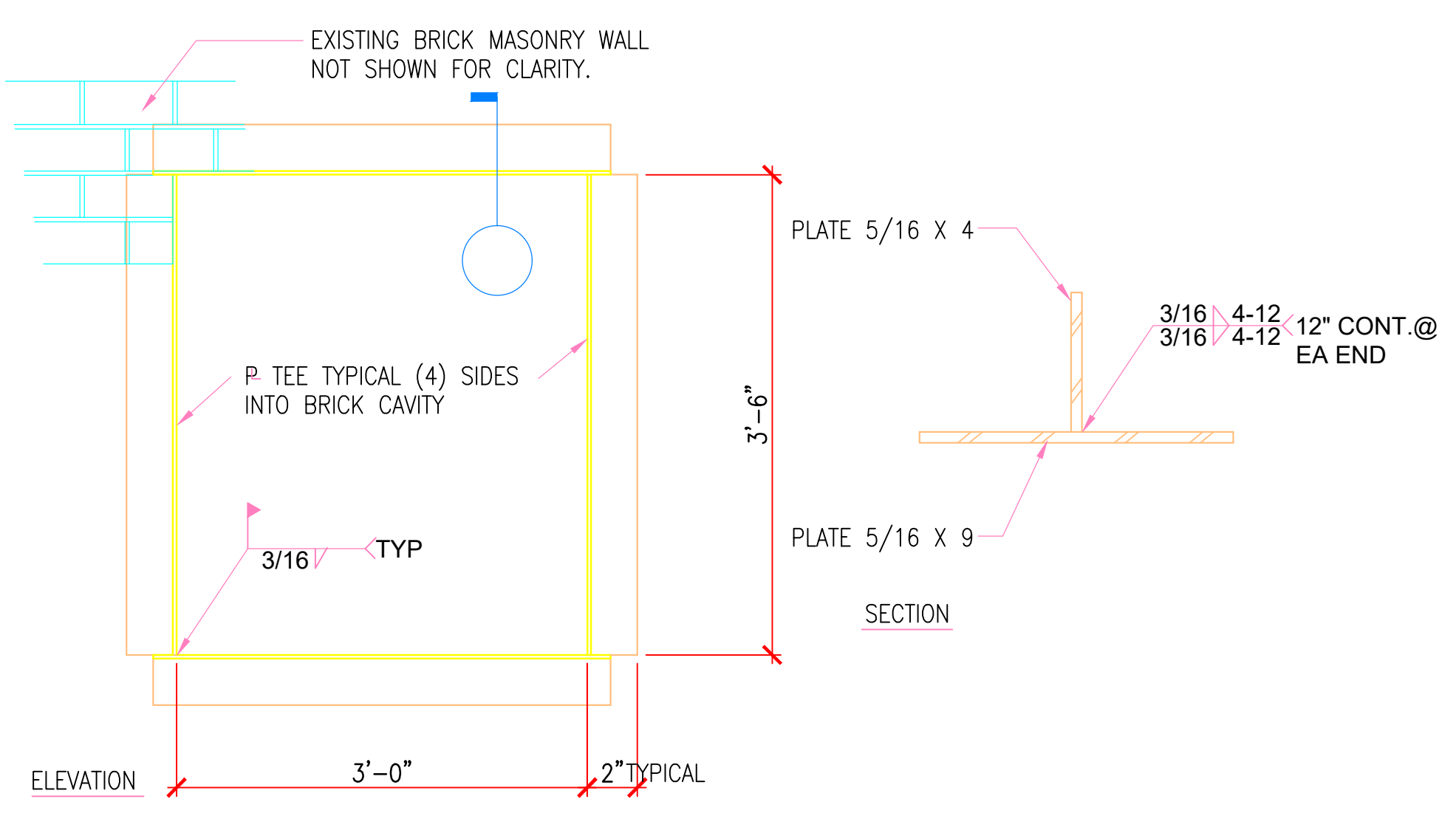
11 WALL MOUNTED FOLDING TABLE
1-1/2"=1'-0"



12 FURRED WALL TERMINATIONS
3"=1'-0"



13 GUARD RAIL @ MECH RM
1-1/2"=1'-0"



14 STL SUPPORT @ O.H. COILING DOOR OPENING
1"=1'-0"



LITTLE ROCK A.F.B.
ARKANSAS

GARVER ENGINEERS

1010 BATTERY STREET
LITTLE ROCK, ARKANSAS 72202
www.garverengineers.com
(501) 376-3633

CROMWELL
ARCHITECTS ENGINEERS

101 SOUTH SPRING ST
LITTLE ROCK AR 72201
TELEPHONE 501-372-2900
FACSIMILE 501-372-0482

No.	Revision/Issue	Date	BY	APP'D

PROJECT TITLE REPAIR & RENOVATE MEDICAL CLINIC PH IV LITTLE ROCK AIR FORCE BASE JACKSONVILLE, ARKANSAS 100% SUBMITTAL	SHEET TITLE INTERIOR ELEVATIONS & DETAILS			
	DRAWN BY P.J.L.	LEAD DESIGNER K. TAYLOR	PROJECT NUMBER NKAK#06-8006-4	
	TECH REVIEWER P.J.L.	DESIGNED BY P. LEDFORD	SHEET A-201	
	DATE JULY 1, 2008	SCALE AS NOTED	10 of 50	