

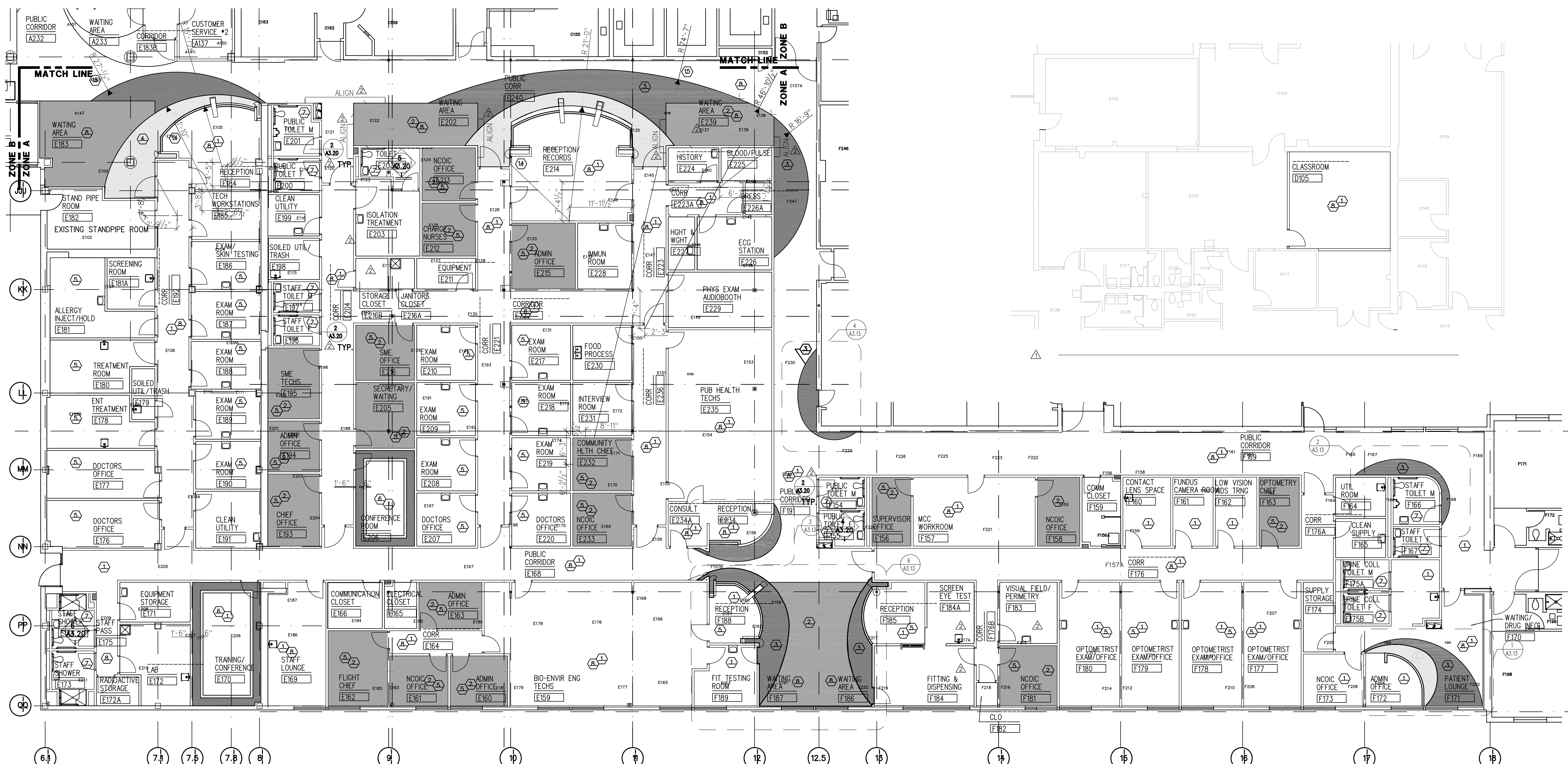
DATE	DESCRIPTION	APPROVED	SYMBOL	AMENDMENT
10/10/2003	SD-1 ADDENDUM #1			
8/01/2005	REVISIONS AS-BUILT			
10/31/2003	ISSUED FOR FINAL WORK PLAN			
10/01/2003	ISSUED FOR BID			

DESIGNED BY DATE: 10/10/2003	PROJECT NO.: 61503
DRAWN BY:	DRAWING CODE:
CHECKED BY:	REVIEWED BY:
DATE: 10/10/2003	DATE: 10/10/2003

U.S. ARMY ENGINEERING AND SUPPORT CENTER CORPS OF ENGINEERS HUNTSVILLE, ALABAMA	FLM T E C H DESIGN
--	--------------------------

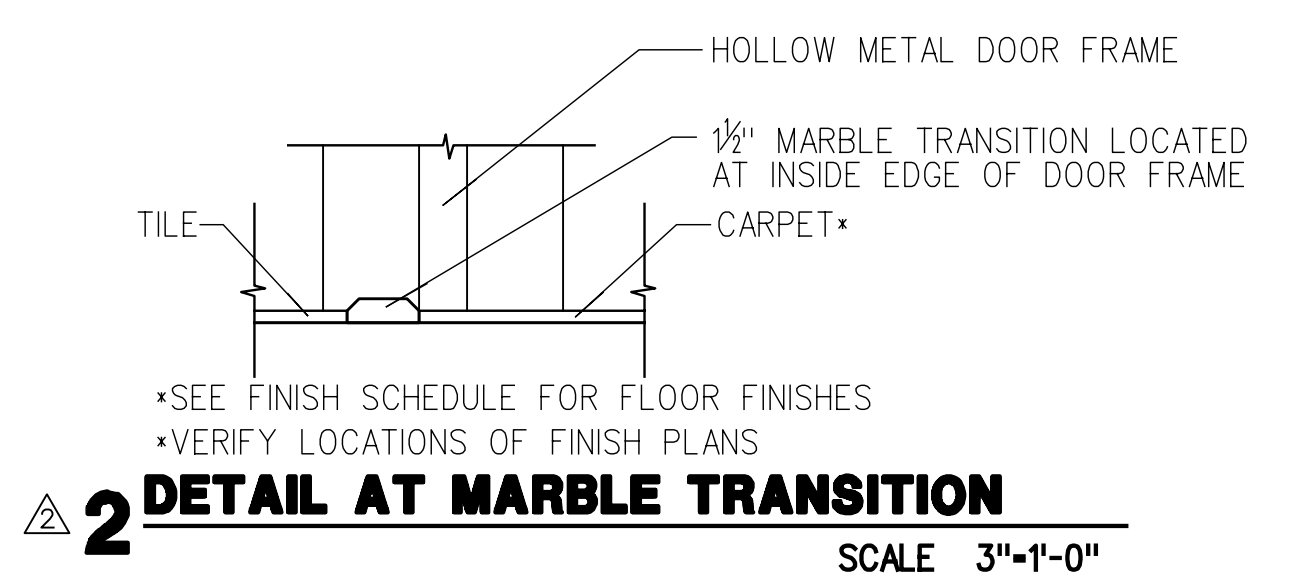
RENOVATE CLINIC
BUILDING 1090
LITTLE ROCK AFB, ARKANSAS
FINISH PLAN ZONE A
AS-BUILT

SHEET
REFERENCE
NUMBER:
A3.11
SHEET X OF XX



FLOORING LEGEND

CPT-1	CERAMIC FLOOR TILE BY KEY NOTE INDICATOR
CPT-2	VCT
CPT-3	SV
CPT-4	INDICATES MARBLE TRANSITION
	INDICATES TRANSITION SEE SPEC SECTION 09650



GENERAL INTERIOR FINISH NOTES

- PLANS USED FOR CLARIFICATION OF FINISH SCHEDULE. REFER TO A4-10, A4-11, A4-12 FOR PRIMARY DIRECTION ON FINISHES.
- PART WEST WALL OF RECEPTION AREA A191 P-2. WALLCOVER (WVC) ALL OTHER WALLS.
- PART EAST AND SOUTH WALLS OF RECEPTION E184 P-2. WALLCOVER ALL OTHER WALLS.
- PART SOUTH WALL OF RECEPTION E214 P-2. WALLCOVER ALL OTHER WALLS.
- PART NORTH WALL OF RECEPTION E234 P-2. WALLCOVER ALL OTHER WALLS.
- PART WEST AND SOUTH WALLS OF RECEPTION F188 P-2. WALLCOVER ALL OTHER WALLS.
- PART EAST AND SOUTH WALLS OF RECEPTION F185 P-2. WALLCOVER ALL OTHER WALLS.
- PART WEST WALL OF RECEPTION F172 P-2. WALL COVER ALL OTHER WALLS.
- PART ALL ANGLED COLUMNS & SOFFITS AT RECEPTION COUNTERS P-2.
- REFER TO SHEETS A3.13 & A3.14 FOR ENLARGED CARPET PLANS.
- REFER TO FINISH SCHEDULE FOR FLOORING MATERIAL NOT INDICATED ON PLANS.
- REFER TO SHEET A3.20 FOR CERAMIC WALL TILE LAYOUT.
- WHERE TRANSITION FINISHES FROM NEW TO EXISTING CONDITION OCCURS, PATCH EXISTING WITH MATCHING MATERIALS.
- SEE SPEC SECTION 09650 FOR ALL FLOORING TRANSITIONS.
- FIELD VERIFY ALL DIMENSIONS AND REPORT ANY DISCREPANCIES TO THE GOVERNMENT'S REPRESENTATIVE PRIOR TO INSTALLATION.
- ALTERNATE #3 IS A FINISH UPGRADE FOR CORRIDORS C137, C126A, AND C158 AS DESIGNATED IN PLAN. THIS INCLUDES FLOOR AND WALL FINISHES AS WELL AS THE REPLACEMENT OF DOOR LEAFS DESIGNATED ON A1.12. SEE DIMENSION PLAN A1.12 FOR EXCEPTIONS. SEE A2.12 FOR CEILING DESCRIPTION OF ALTERNATE #3.

KEYED NOTES

- CPT-1
- CPT-2
- CPT-3
- CPT-4
- SEE FINISH SCHEDULE FOR ACCENT PAINT LOCATIONS.
- THIS ROOM TO HAVE A 1'-6" BORDER CPT-3, & 6" BORDER CPT-4.
- CFT
- VINYL WALL COVERING-SEE FINISH SCHEDULE
- ALT. #3 FLOORING WILL STOP AT DOUBLE DOORS. SEE REFLECTED CEILING PLAN A2.12 FOR LIMITS OF ALT-#3 CEILING. WINDOWS IN WAITING AREA C119 WILL BE PART OF BASE BID.
- WALK-OFF CARPET.
- EXISTING FINISHES NOT IN THIS CONTRACT.
- MATCH FINISHES IN CORRIDOR.
- MATCH EXISTING FINISHES.
- COORDINATE WITH EDGE OF SOFFIT. SEE REFLECTED CEILING PLAN A2.11.
- COORDINATE WITH EDGE OF SUSPENDED OPEN METAL CEILING GRID. SEE REFLECTED CEILING PLAN A2.11.
- COORDINATE WITH EDGE OF SOFFIT. SEE REFLECTED CEILING PLAN A2.12.
- COORDINATE WITH EDGE OF SUSPENDED OPEN METAL CEILING GRID. SEE REFLECTED CEILING PLAN A2.12.
- COORDINATE WITH EDGE OF SOFFIT. SEE REFLECTED CEILING PLAN A2.13.
- COORDINATE WITH EDGE OF SUSPENDED OPEN METAL CEILING GRID. SEE REFLECTED CEILING PLAN A2.13.
- COORDINATE WITH EDGE OF REVERSE SOFFIT. SEE REFLECTED CEILING PLAN A2.12.
- COORDINATE WITH EDGE OF REVERSE SOFFIT. SEE REFLECTED CEILING PLAN A2.13.

