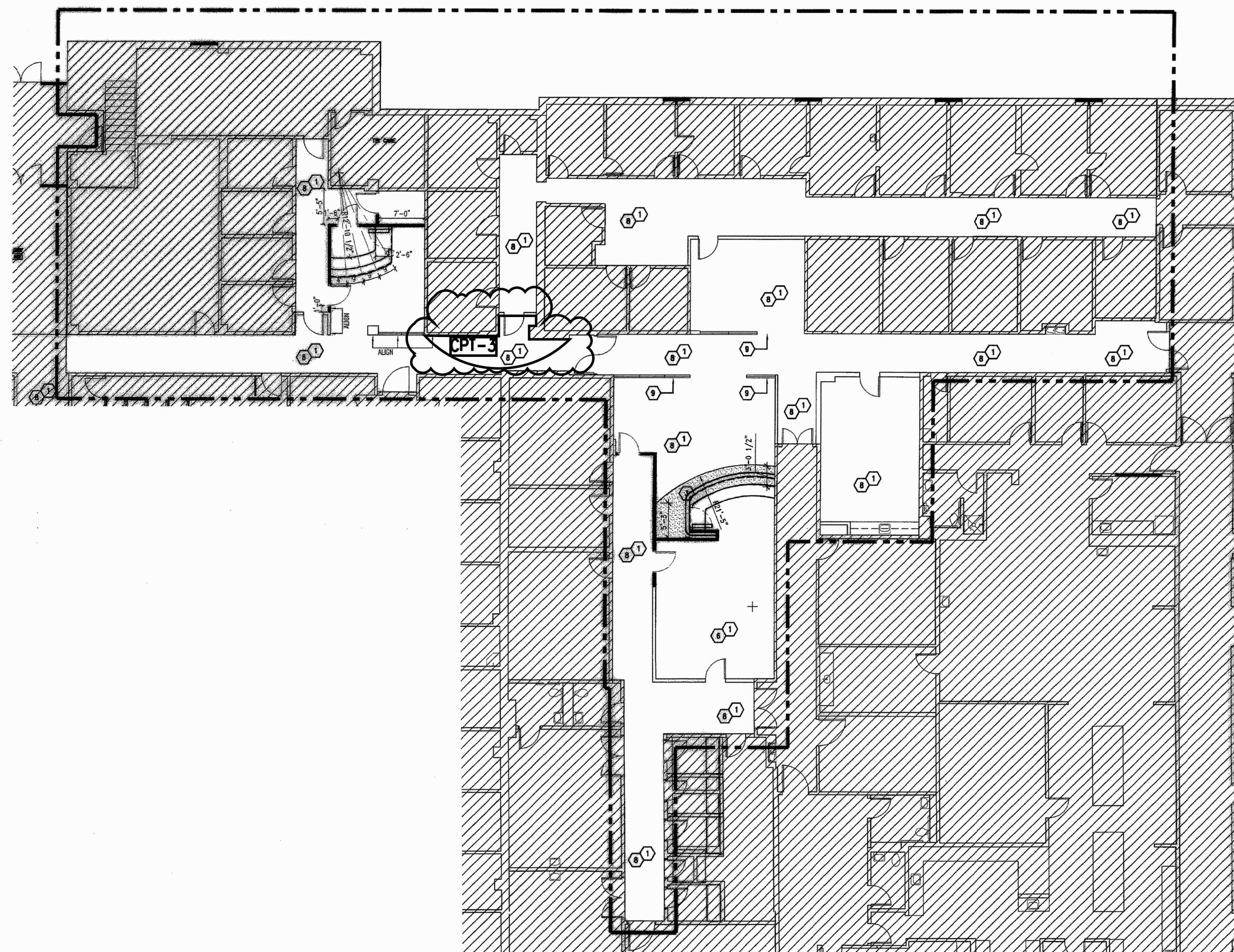




LITTLE ROCK A.F.B.
ARKANSAS

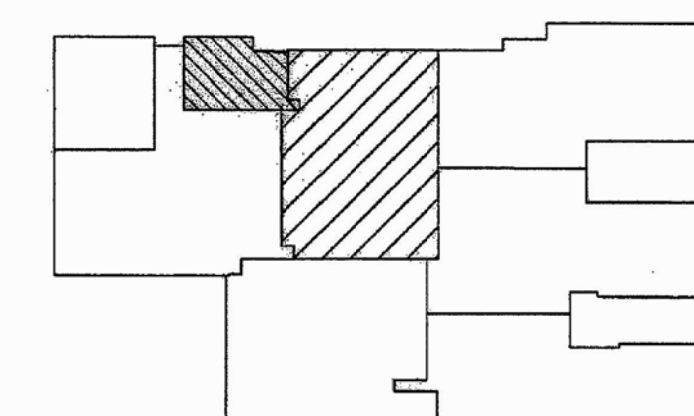
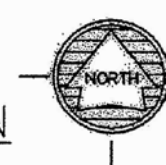


1 NEW FLOOR PATTERN PLAN
1/8" = 1'-0"



GENERAL INTERIOR FINISH NOTES:	KEYED NOTES:	FLOOR FINISH LEGEND:
<p>1. PLANS USED FOR CLARIFICATION OF FINISH SCHEDULE. REFER TO A4.11 FOR PRIMARY DIRECTION ON FINISHES.</p> <p>2. REFER TO FINISH SCHEDULE FOR FLOORING MATERIAL NOT INDICATED ON PLANS.</p> <p>3. PAINT ALL ANGLED COLUMNS & SOFFITS AT RECEPTION COUNTERS P-2.</p> <p>4. WHERE TRANSITION FINISHES FROM NEW TO EXISTING CONDITION OCCURS, PATCH EXISTING WITH MATCHING MATERIALS.</p> <p>5. SEE SPEC SECTION 09650 FOR ALL FLOORING TRANSITIONS.</p> <p>6. FIELD VERIFY ALL DIMENSIONS AND REPORT ANY DISCREPANCIES TO THE GOVERNMENT'S REPRESENTATIVE PRIOR TO INSTALLATION.</p> <p>7. ALL BASE IS R-1 UNLESS NOTED OTHERWISE.</p> <p>8. ALL WALLS ARE PAINTED P-1 UNLESS NOTED OTHERWISE. REFER TO INTERIOR FINISH SCHEDULE.</p>	<p>1 CPT-1</p> <p>2 NOT USED</p> <p>3 CPT-3</p> <p>4 WM-1</p> <p>5 NOT USED</p> <p>6 PAINT WALLS P-2</p> <p>7 NOT USED</p> <p>8 VINYL WALL COVERING</p> <p>9 DP-1</p> <p>10 NOT USED</p>	<p>CPT-1</p> <p>CPT-3</p> <p>INDICATES TRANSITION SEE SPEC SECTION 09650</p>

KEYPLAN
N.T.S.



PROJECT TITLE REPAIR MEDICAL CENTER PH 3 LITTLE ROCK AFB, ARKANSAS	SHEET TITLE FINISH PLAN INTERIOR PUBLIC AREAS
DRAWN BY GP	LEAD DESIGNER AM
TECH. REVIEWER AM	PROJECT NUMBER NKAK 06-8001
DESIGNED BY GP	SHEET A4.20
DATE 8-11-06	SCALE 1/8"=1'-0"
12 OF 37	

AS BUILTS