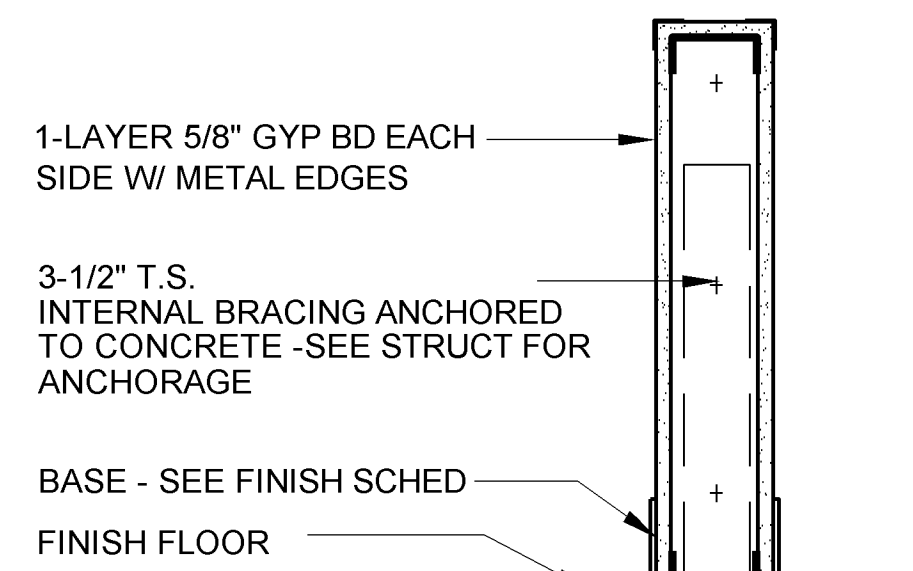


NOTE: METAL STUDS FOR INTERIOR PARTITIONS SHALL BE MIN SIZE AS INDICATED BELOW UNLESS NOTED OTHERWISE. STUD FABRICATOR SHALL SIZE FOR EXACT CONDITIONS & SUBMIT SHOP DRAWINGS FOR APPROVAL.

UNBRACED HEIGHT	MIN. MTL STUD SIZE & SPACING
LESS THAN 10'-0"	25 GA. 3 5/8" AT 16" O.C.
10'-0" TO 15'-0"	20 GA. 3 5/8" AT 16" O.C.
15'-0" TO 20'-0"	18 GA. 6" AT 16" O.C.
GREATER THAN 20'-0"	18 GA. 6" AT 12" O.C.



SECURITY PARTITION TYPE P-1s. 16 GA STUDS AND 18 GA. EXPANDED STEEL SCREEN LINED FROM FLOOR TO METAL DECK ABOVE AND COVERED WITH 5/8" GYP BD

**P-1** INTERIOR NON-LOAD BEARING. SEAL ALL PENETRATIONS

**P-2** INTERIOR NON-LOAD BEARING

**P-3** INTERIOR NON-LOAD BEARING NEW WALL OVER EXISTING WALL

**P-4** FURRING AS REQUIRED FOR CONTINUOUS, SMOOTH, LEVEL SURFACE

**P-5** CONCRETE MASONRY WALL

**P-6** HALF WALL

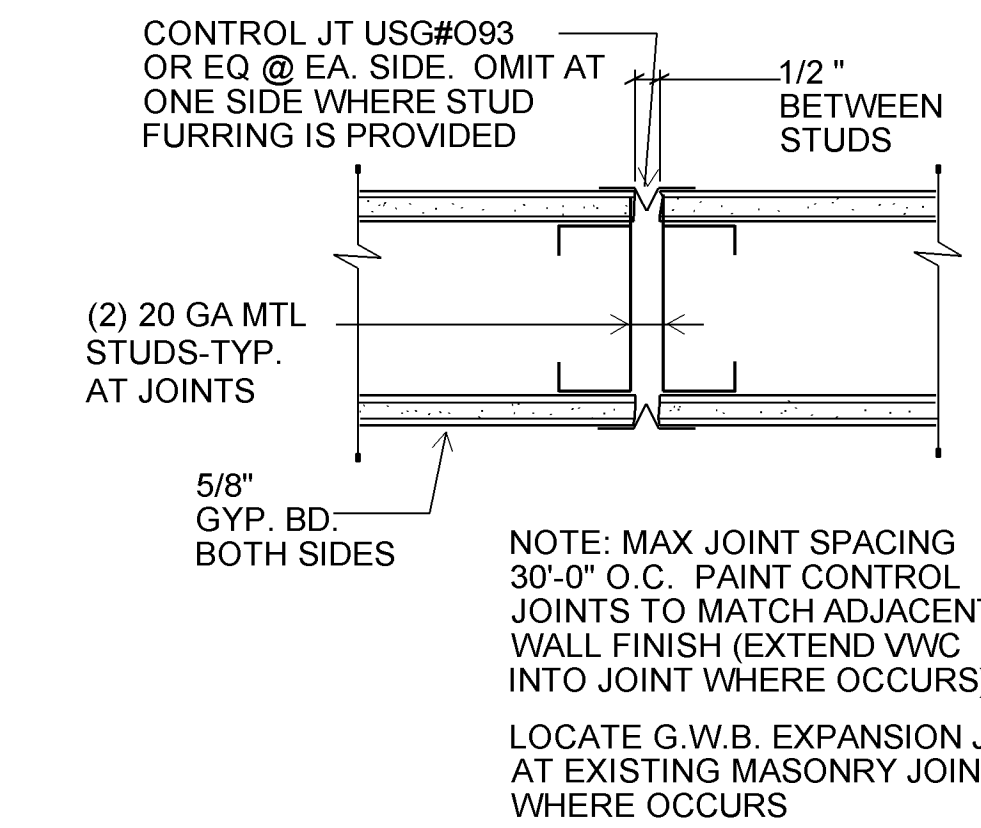
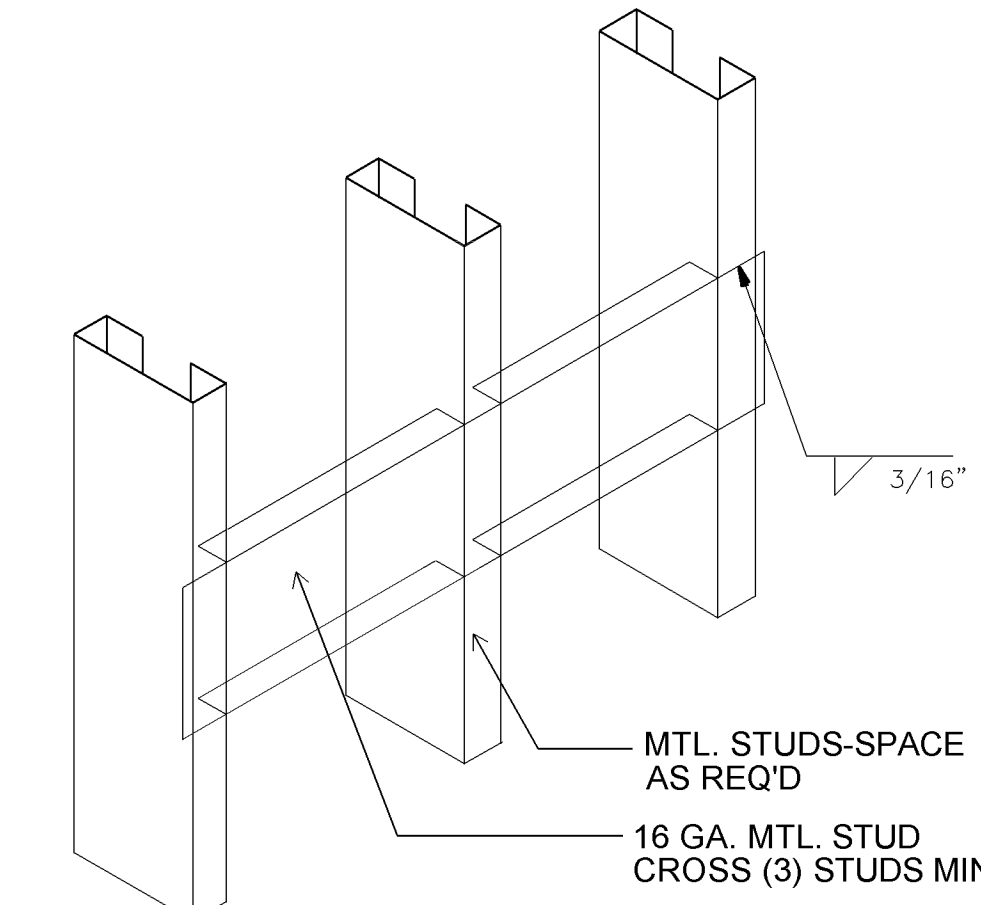
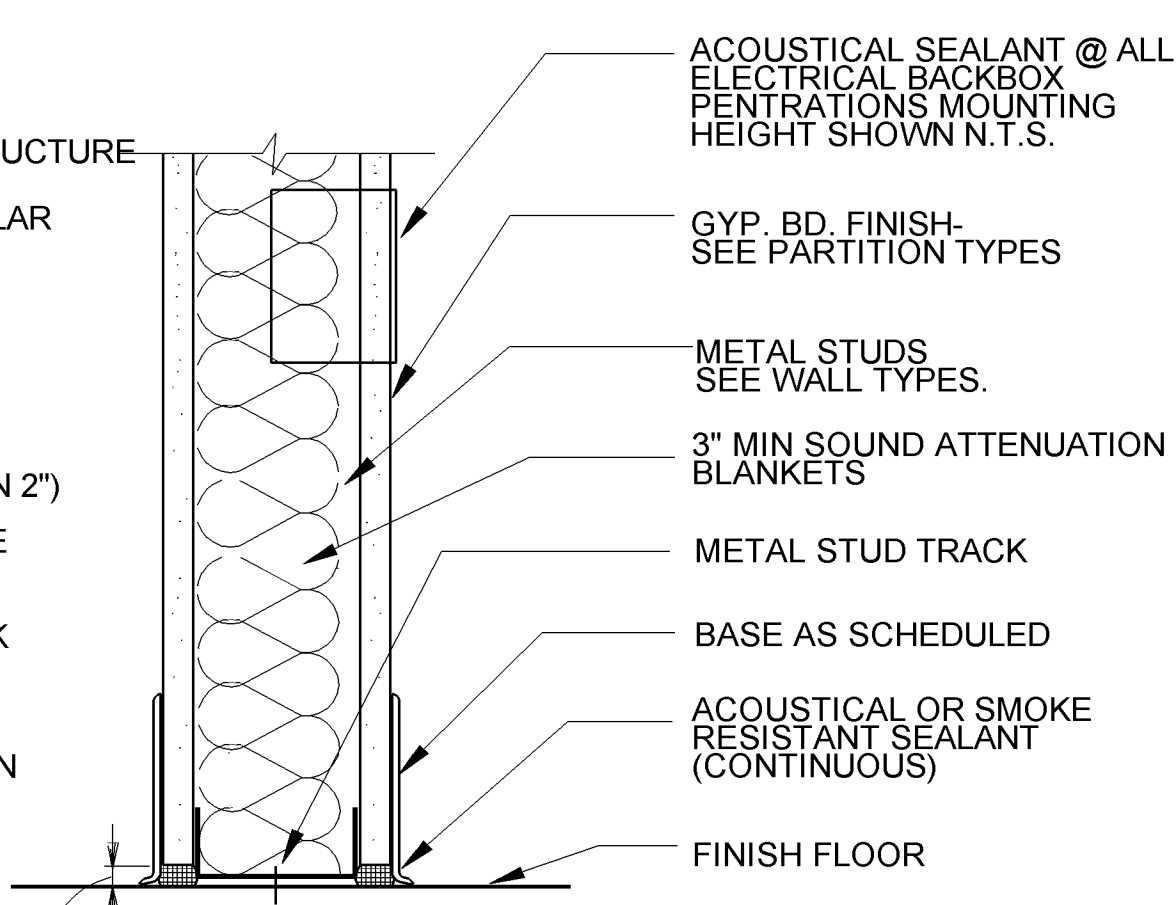
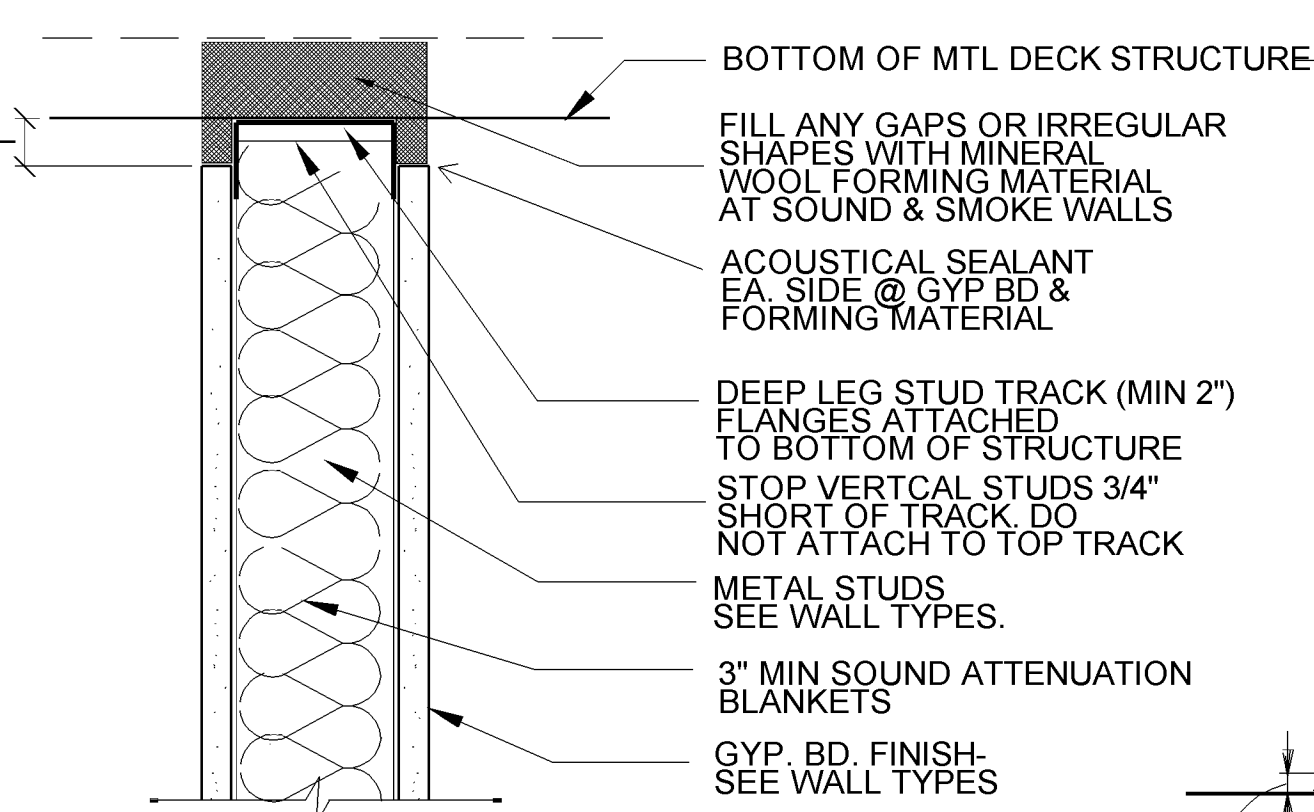
**P-1s** SECURITY INTERIOR NON-LOAD BEARING WALL. SIMILAR @ LOW WALL UNDER DISPENSING COUNTER. ADD P-6 HALF WALL STEEL TUBE BRACE ANCHORED TO FLOOR.

SOUND PARTITIONS REQUIRE THE MINIMUM STC RATING AS FOLLOWS: PHARMACY AREAS= 45, TOILETS, STORAGE & HOUSEKEEPING AREAS= 40, CONFERENCE ROOM, EDUCATION/TRAINING ROOMS= 45, ALL OTHER AREAS= 40.

**P-4a** 7/8" STUD FURRING OVER EXISTING BRICK VENEER  
**P-4b** 1 5/8" STUD FURRING OVER EXISTING BRICK VENEER  
**P-4c** 2 5/8" STUD FURRING OVER EXISTING BRICK VENEER

**P-4d** 3 5/8" STUD FURRING OVER EXISTING BRICK VENEER  
**P-4e** 7/8" STUD FURRING OVER EXISTING BRICK VENEER-ALIGN FURRING AND REGLETS FOR PANELIZED GWB  
**P-4f** 2-5/8" STUD FURRING OVER EXISTING LATTICE STUD WALL

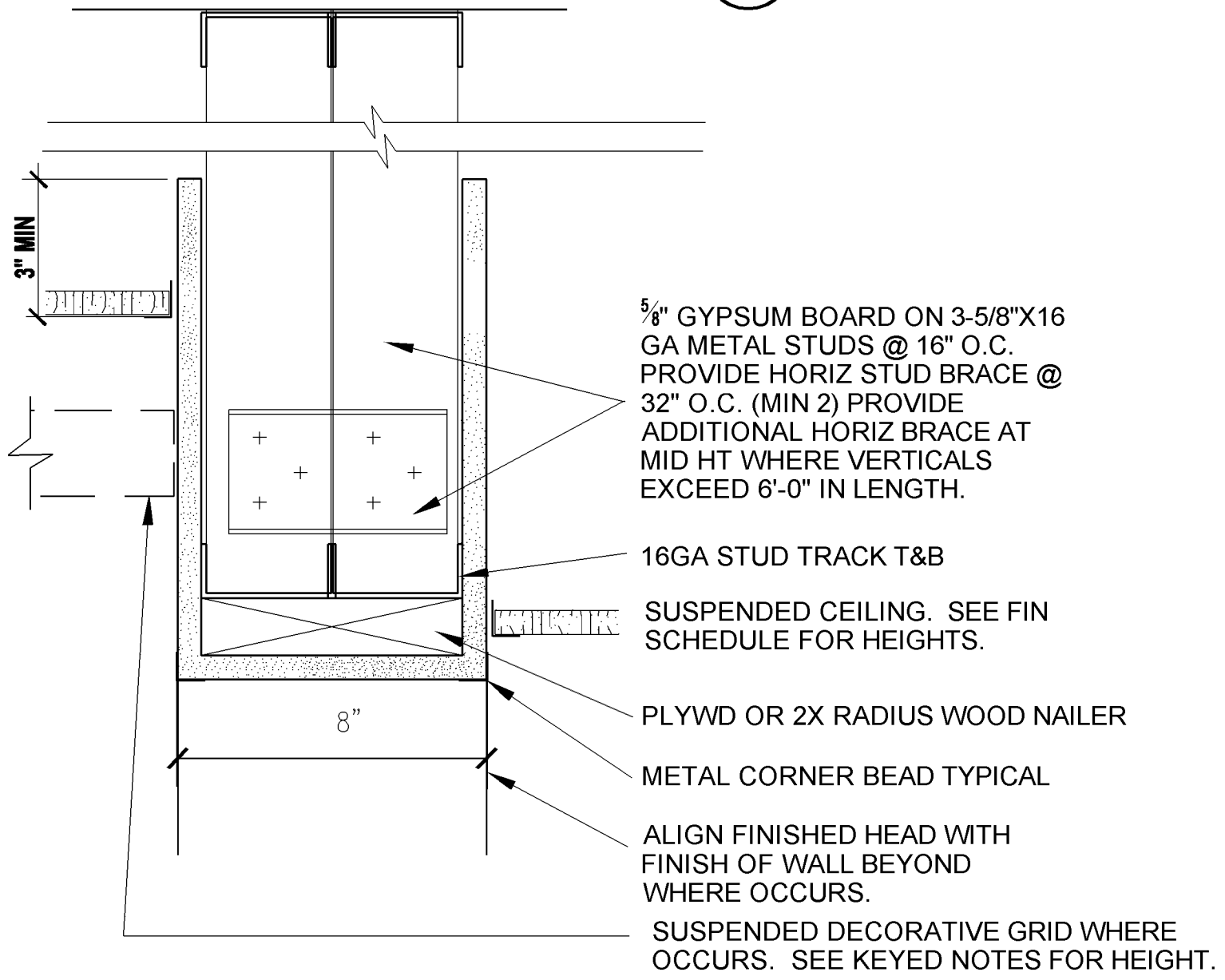
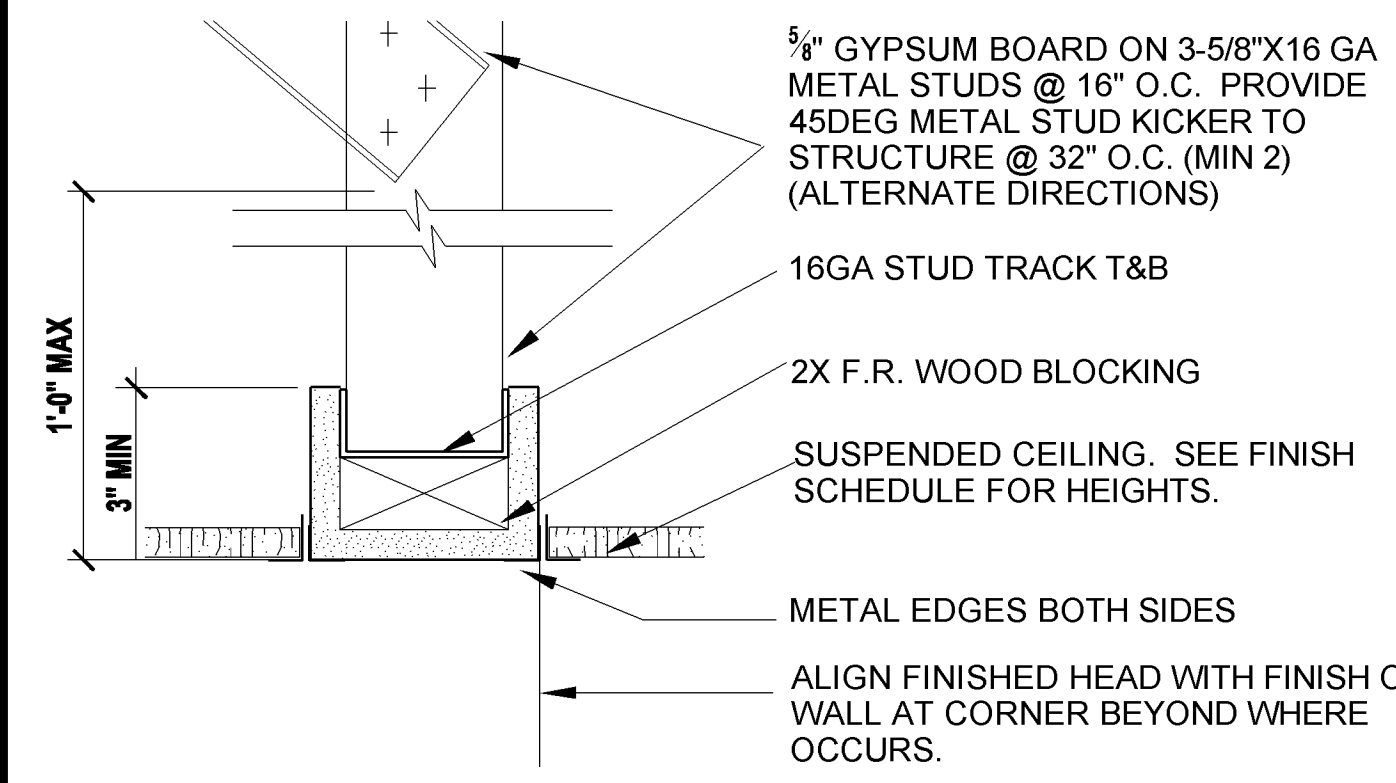
**1** WALL TYPES  
 N.T.S.  
 NOTE: ALLOW FOR 1/2" VERTICAL MOVEMENT EITHER DIRECTION AT ROOF AND FLOOR TYPICAL



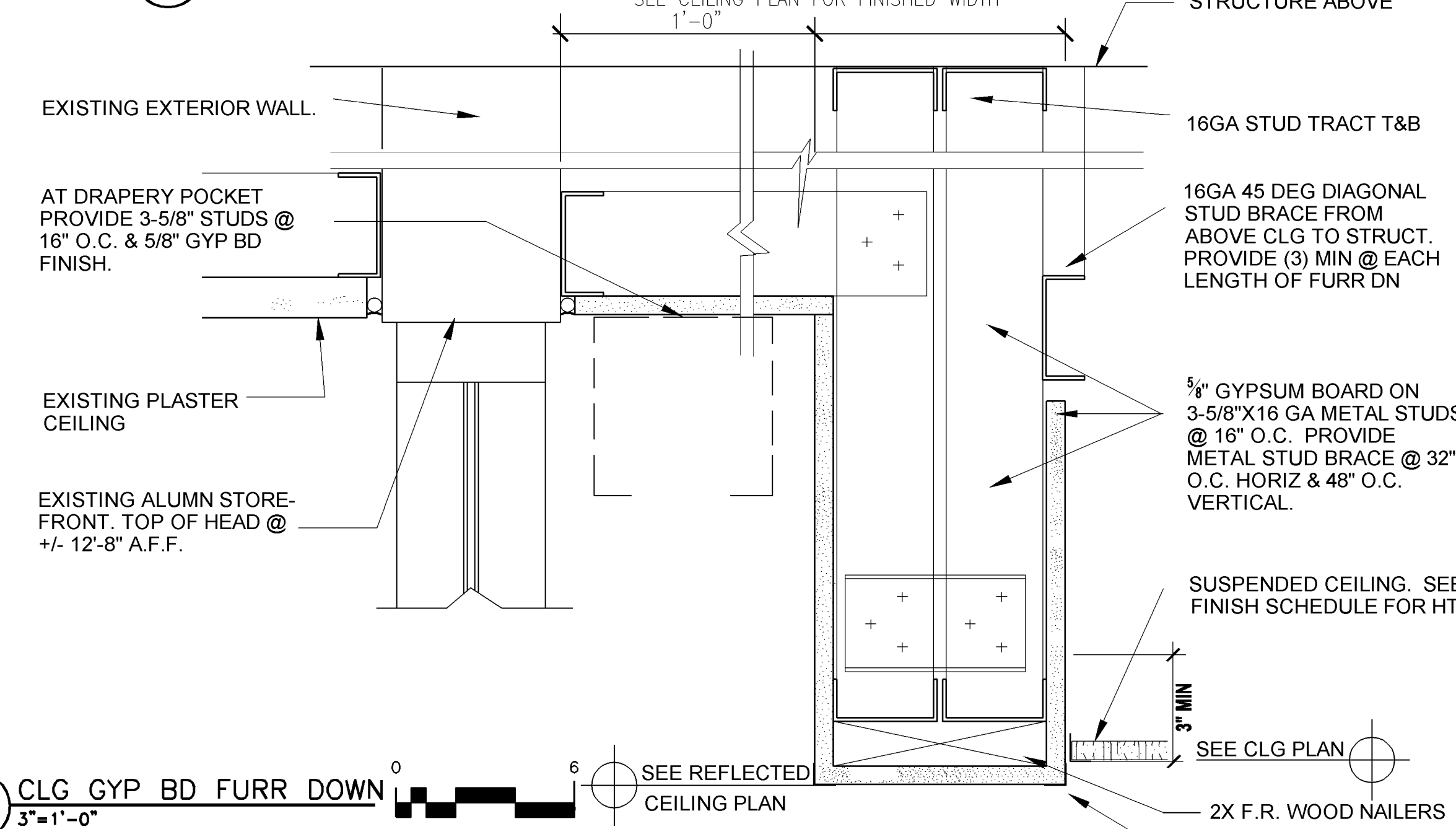
**2** WALL TO STRUCTURE DETAIL  
 3"=1'-0"

**3** STUD BACKING DETAIL @ WALL MOUNTED CASEWORK AND CABINETRY  
 3"=1'-0"

**4** G.B. WALL EXPANSION JOINT  
 3"=1'-0"



**6** CEILING GYP BD FURR DOWN BETWEEN WALLS  
 3"=1'-0"



**7** CLG GYP BD FURR DOWN  
 3"=1'-0"

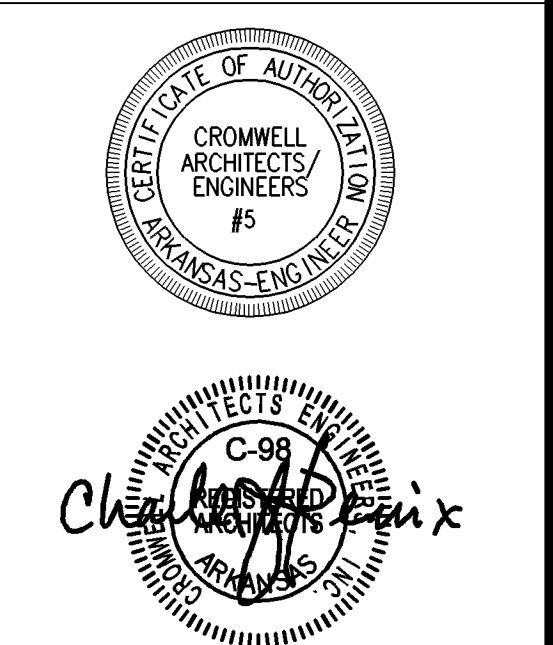
**5** GYP BD CEILING TRANSITION  
 3"=1'-0"



LITTLE ROCK A.F.B.  
 ARKANSAS

**GARVER** 1010 Battery St.  
 Little Rock, AR 72202  
 501-376-3633  
 www.GarverUSA.com

**CROMWELL**  
 ARCHITECTS ENGINEERS  
 101 SOUTH SPRING ST  
 LITTLE ROCK AR 72201  
 TELEPHONE 501-372-2900  
 FACSIMILE 501-372-0482



No.	Revision/Issue	Date	BY	APP'D

PROJECT TITLE REPAIR & RENOVATE MED. CLINIC PH IV A LITTLE ROCK AIR FORCE BASE JACKSONVILLE, ARKANSAS	SHEET TITLE <b>WALL TYPES &amp; DETAILS</b>			
	DRAWN BY JKL	LEAD DESIGNER K. TAYLOR		
	TECH REVIEWER JKL	PROJECT NUMBER NKAK 06-8006 4A		
	DESIGNED BY JOHN K. LAI	SHEET <b>A-501</b>		
	DATE 13 MAY 2009	SCALE 15 of 51		