

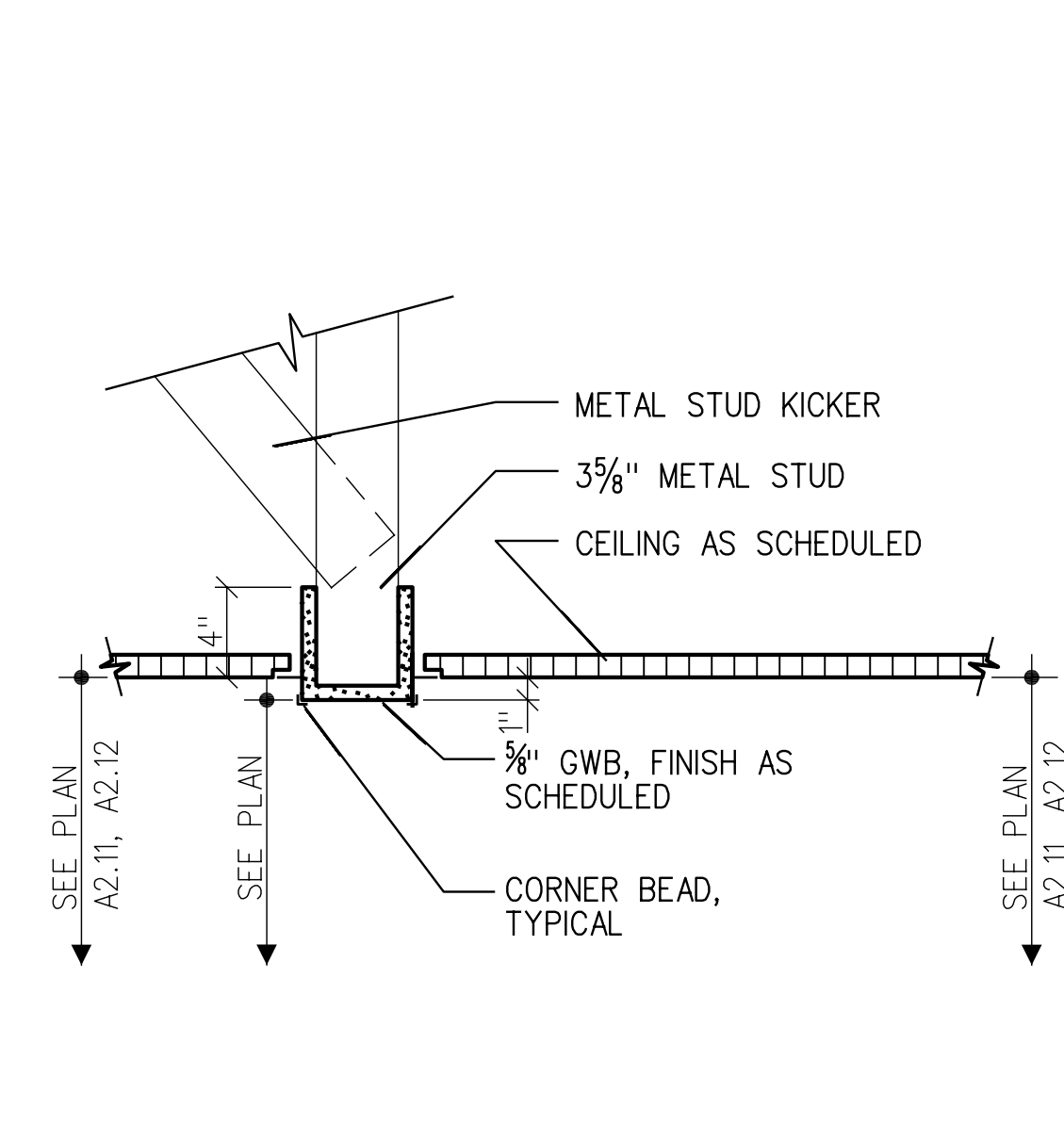
REVISIONS	DATE	DESCRIPTION	APPROVED	SYMBOL
1	8/01/2005	REVISED AS-BUILT		
2	9/27/2004	REVISED AS-BUILT		
3	10/07/2003	REVISED AS-BUILT		
4	10/07/2003	REVISED AS-BUILT		
5	10/07/2003	REVISED AS-BUILT		
6	10/07/2003	REVISED AS-BUILT		
7	10/07/2003	REVISED AS-BUILT		
8	10/07/2003	REVISED AS-BUILT		
9	10/07/2003	REVISED AS-BUILT		
10	10/07/2003	REVISED AS-BUILT		
11	10/07/2003	REVISED AS-BUILT		
12	10/07/2003	REVISED AS-BUILT		
13	10/07/2003	REVISED AS-BUILT		
14	10/07/2003	REVISED AS-BUILT		
15	10/07/2003	REVISED AS-BUILT		
16	10/07/2003	REVISED AS-BUILT		
17	10/07/2003	REVISED AS-BUILT		
18	10/07/2003	REVISED AS-BUILT		
19	10/07/2003	REVISED AS-BUILT		
20	10/07/2003	REVISED AS-BUILT		
21	10/07/2003	REVISED AS-BUILT		
22	10/07/2003	REVISED AS-BUILT		
23	10/07/2003	REVISED AS-BUILT		
24	10/07/2003	REVISED AS-BUILT		
25	10/07/2003	REVISED AS-BUILT		
26	10/07/2003	REVISED AS-BUILT		
27	10/07/2003	REVISED AS-BUILT		
28	10/07/2003	REVISED AS-BUILT		
29	10/07/2003	REVISED AS-BUILT		
30	10/07/2003	REVISED AS-BUILT		
31	10/07/2003	REVISED AS-BUILT		
32	10/07/2003	REVISED AS-BUILT		
33	10/07/2003	REVISED AS-BUILT		
34	10/07/2003	REVISED AS-BUILT		
35	10/07/2003	REVISED AS-BUILT		
36	10/07/2003	REVISED AS-BUILT		
37	10/07/2003	REVISED AS-BUILT		
38	10/07/2003	REVISED AS-BUILT		
39	10/07/2003	REVISED AS-BUILT		
40	10/07/2003	REVISED AS-BUILT		
41	10/07/2003	REVISED AS-BUILT		
42	10/07/2003	REVISED AS-BUILT		
43	10/07/2003	REVISED AS-BUILT		
44	10/07/2003	REVISED AS-BUILT		
45	10/07/2003	REVISED AS-BUILT		
46	10/07/2003	REVISED AS-BUILT		
47	10/07/2003	REVISED AS-BUILT		
48	10/07/2003	REVISED AS-BUILT		
49	10/07/2003	REVISED AS-BUILT		
50	10/07/2003	REVISED AS-BUILT		
51	10/07/2003	REVISED AS-BUILT		
52	10/07/2003	REVISED AS-BUILT		
53	10/07/2003	REVISED AS-BUILT		
54	10/07/2003	REVISED AS-BUILT		
55	10/07/2003	REVISED AS-BUILT		
56	10/07/2003	REVISED AS-BUILT		
57	10/07/2003	REVISED AS-BUILT		
58	10/07/2003	REVISED AS-BUILT		
59	10/07/2003	REVISED AS-BUILT		
60	10/07/2003	REVISED AS-BUILT		
61	10/07/2003	REVISED AS-BUILT		
62	10/07/2003	REVISED AS-BUILT		
63	10/07/2003	REVISED AS-BUILT		
64	10/07/2003	REVISED AS-BUILT		
65	10/07/2003	REVISED AS-BUILT		
66	10/07/2003	REVISED AS-BUILT		
67	10/07/2003	REVISED AS-BUILT		
68	10/07/2003	REVISED AS-BUILT		
69	10/07/2003	REVISED AS-BUILT		
70	10/07/2003	REVISED AS-BUILT		
71	10/07/2003	REVISED AS-BUILT		
72	10/07/2003	REVISED AS-BUILT		
73	10/07/2003	REVISED AS-BUILT		
74	10/07/2003	REVISED AS-BUILT		
75	10/07/2003	REVISED AS-BUILT		
76	10/07/2003	REVISED AS-BUILT		
77	10/07/2003	REVISED AS-BUILT		
78	10/07/2003	REVISED AS-BUILT		
79	10/07/2003	REVISED AS-BUILT		
80	10/07/2003	REVISED AS-BUILT		
81	10/07/2003	REVISED AS-BUILT		
82	10/07/2003	REVISED AS-BUILT		
83	10/07/2003	REVISED AS-BUILT		
84	10/07/2003	REVISED AS-BUILT		
85	10/07/2003	REVISED AS-BUILT		
86	10/07/2003	REVISED AS-BUILT		
87	10/07/2003	REVISED AS-BUILT		
88	10/07/2003	REVISED AS-BUILT		
89	10/07/2003	REVISED AS-BUILT		
90	10/07/2003	REVISED AS-BUILT		
91	10/07/2003	REVISED AS-BUILT		
92	10/07/2003	REVISED AS-BUILT		
93	10/07/2003	REVISED AS-BUILT		
94	10/07/2003	REVISED AS-BUILT		
95	10/07/2003	REVISED AS-BUILT		
96	10/07/2003	REVISED AS-BUILT		
97	10/07/2003	REVISED AS-BUILT		
98	10/07/2003	REVISED AS-BUILT		
99	10/07/2003	REVISED AS-BUILT		
100	10/07/2003	REVISED AS-BUILT		

DESIGNED BY:	DATE:	10/10/2003
DRAWN BY:	PROJECT NO.:	61503
CHECKED BY:	DRAWING CODE:	
REVIEWED BY:	SUBMITTAL NUMBER:	

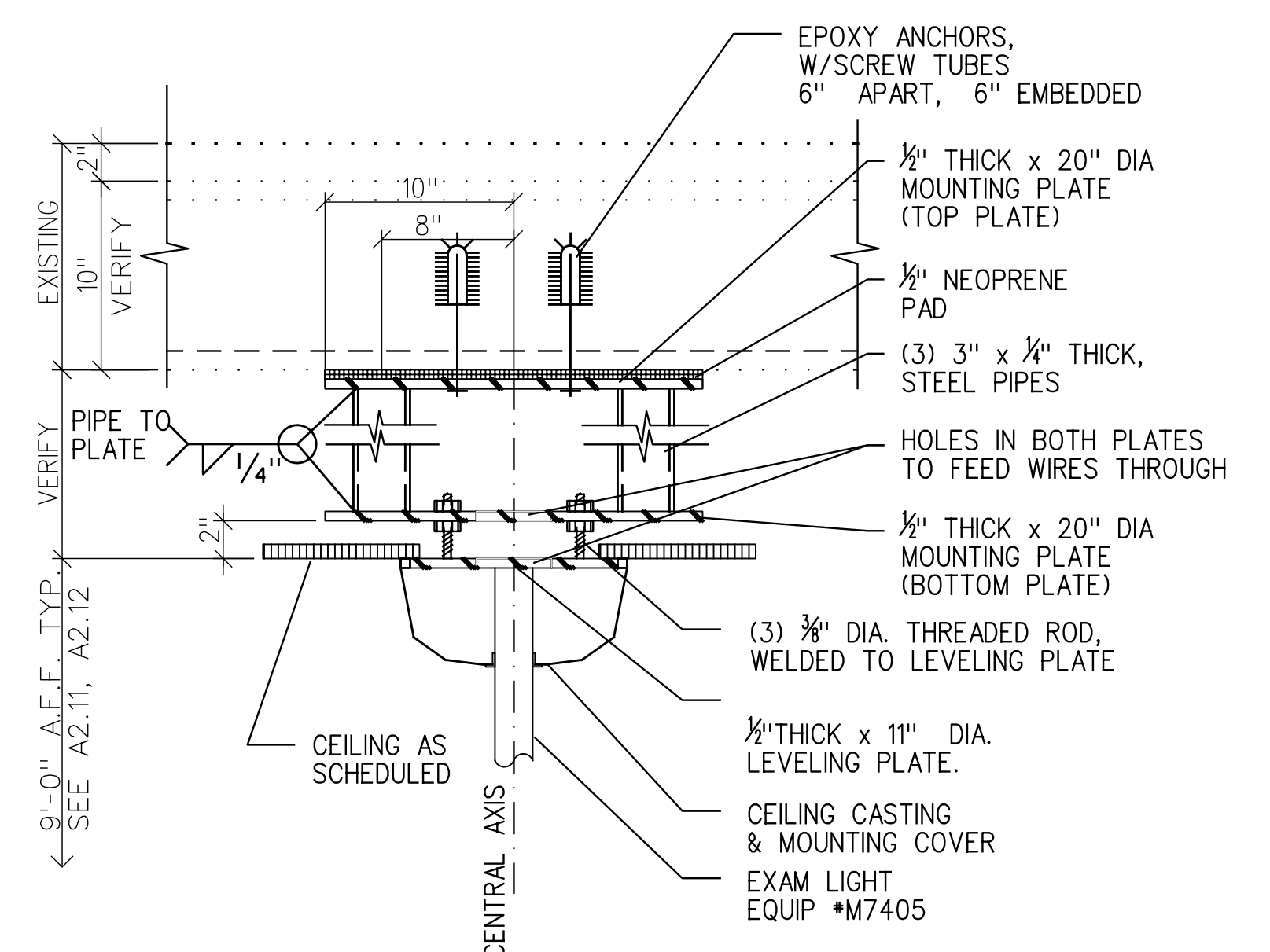
U.S. ARMY ENGINEERING AND SUPPORT CENTER CORPS OF ENGINEERS HUNTSVILLE, ALABAMA	FLM Design
EARTH TECH	FLM Design

RENOVATE CLINIC
BUILDING 1090
LITTLE ROCK AFB, ARKANSAS
**CEILING DETAILS
AS-BUILT**

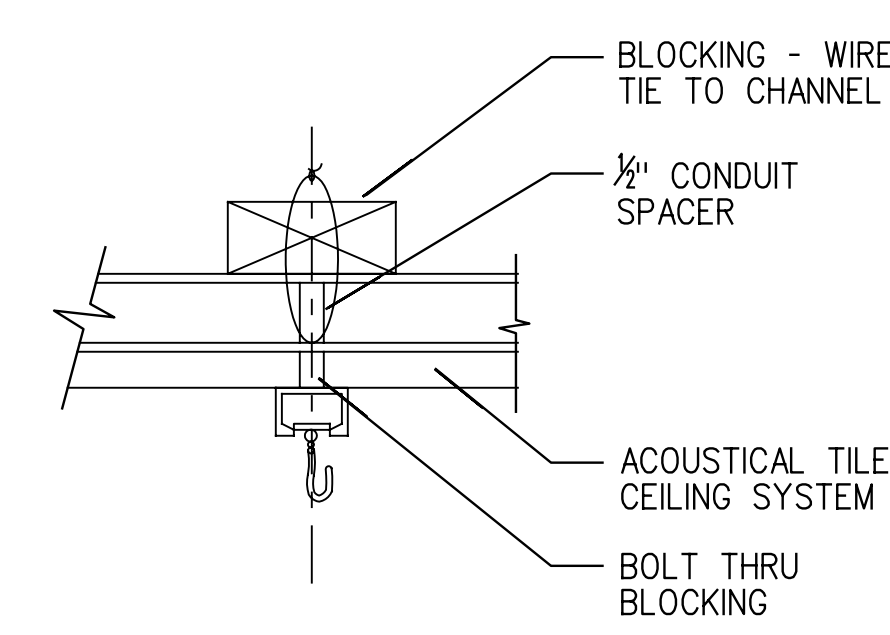
SHEET
REFERENCE
NUMBER:
A5.20
SHEET X OF XX



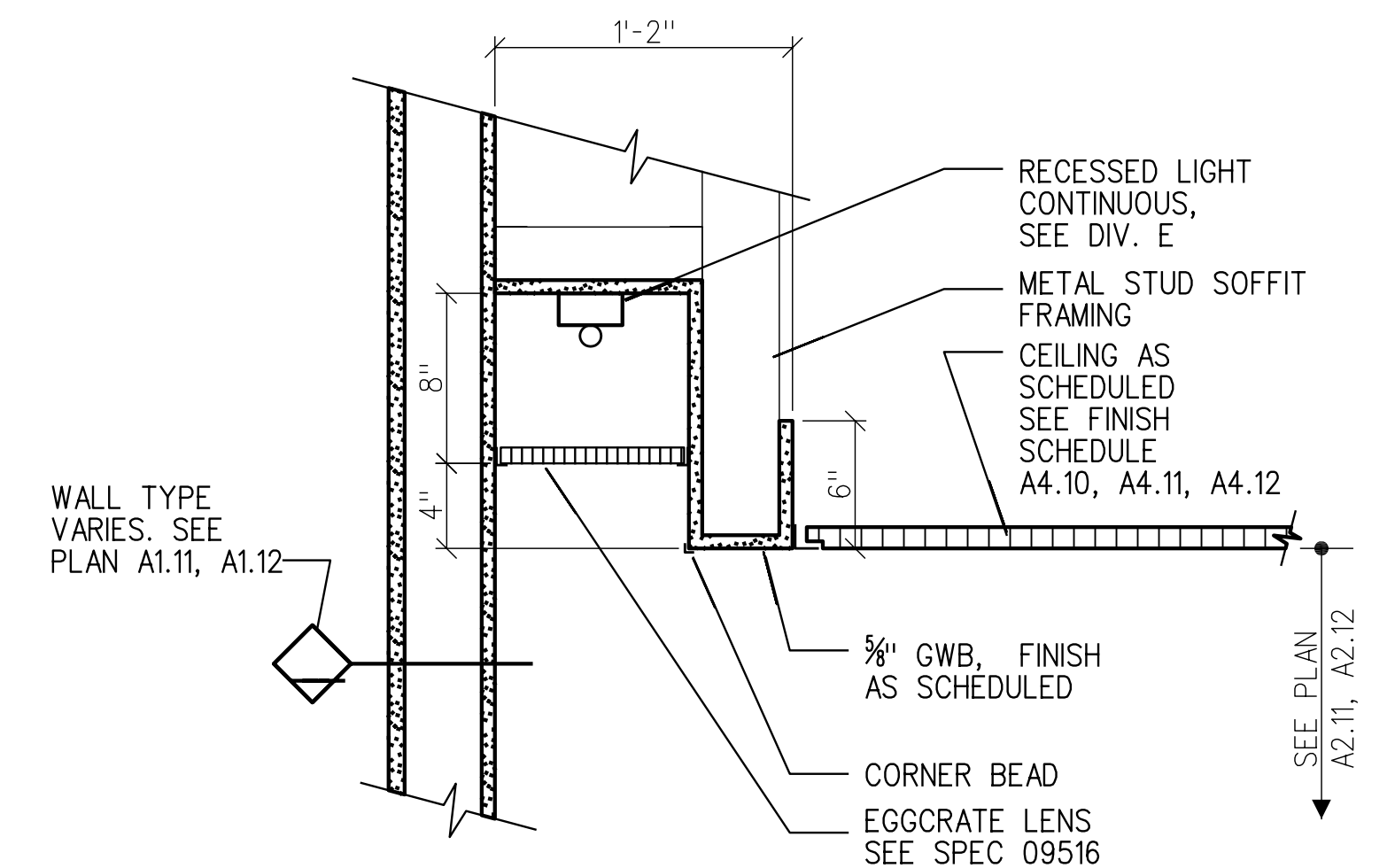
1 BULKHEAD DETAIL
* VERIFY ALL CEILING HEIGHTS WITH PLAN
1 1/2"=1'-0"



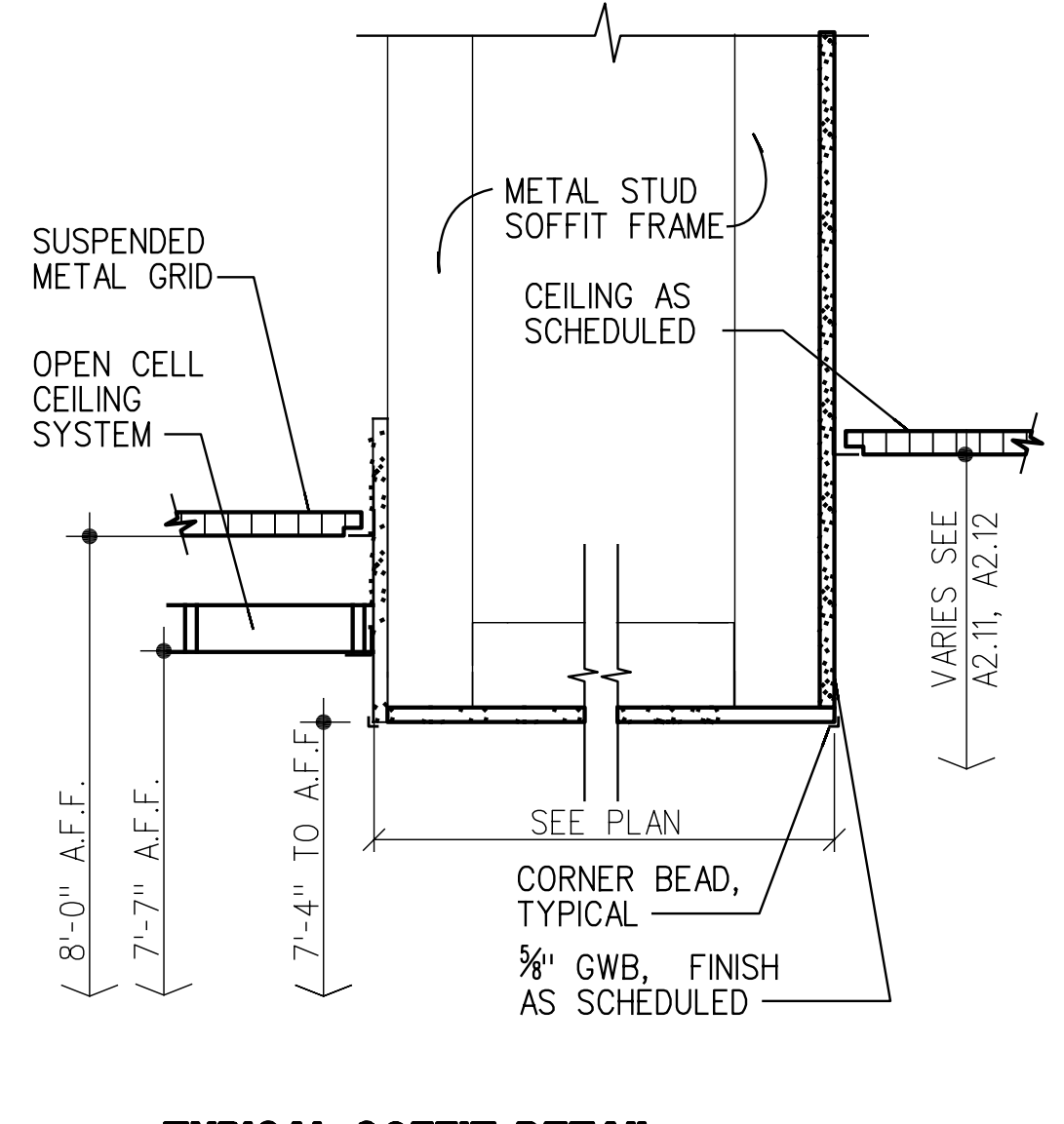
2 CEILING MOUNTED LIGHT SUPPORT DETAIL
* SEE SPEC 11750
1 1/2"=1'-0"



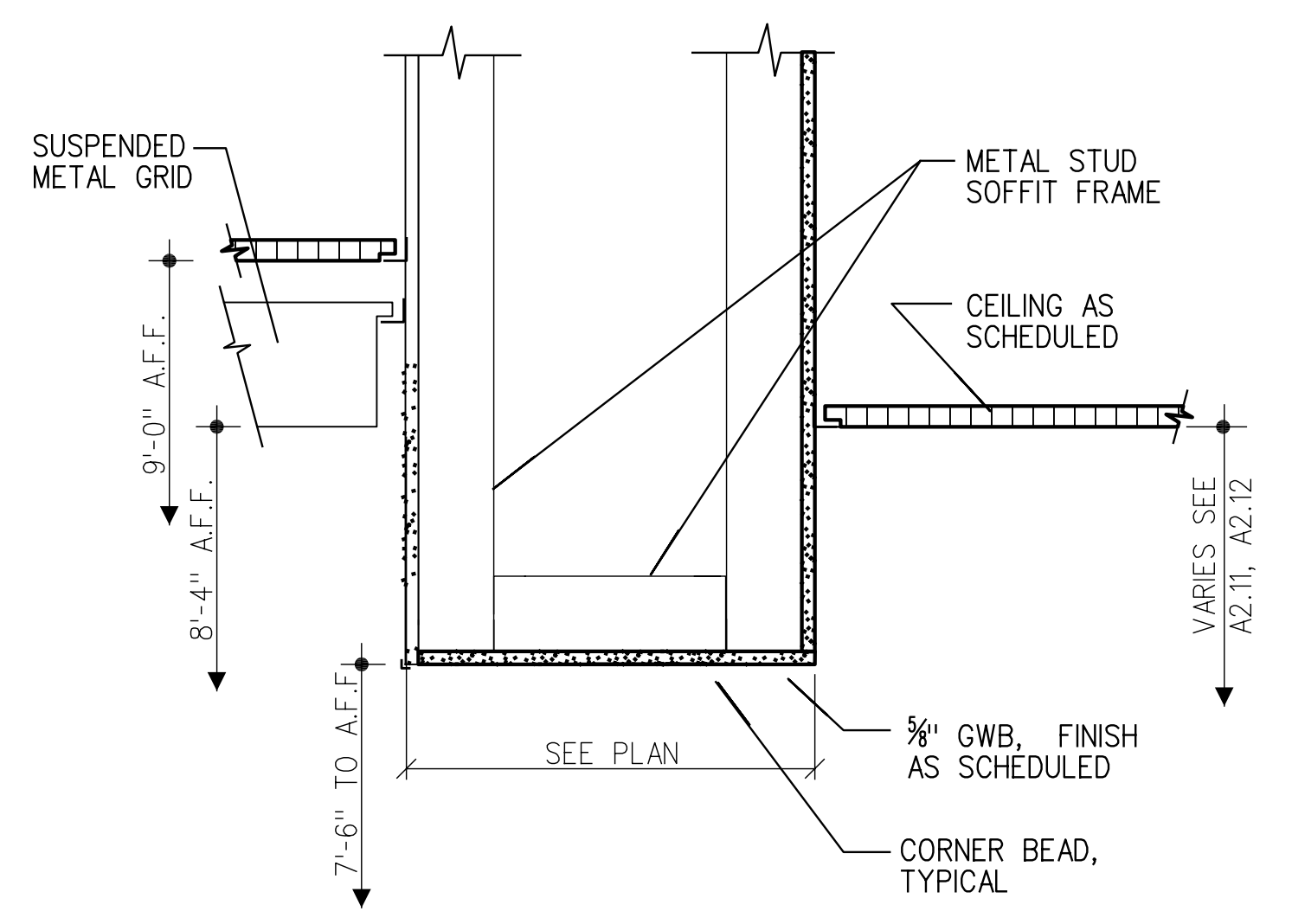
3 TYPICAL CUBICLE CURTAIN
1 1/2"=1'-0"



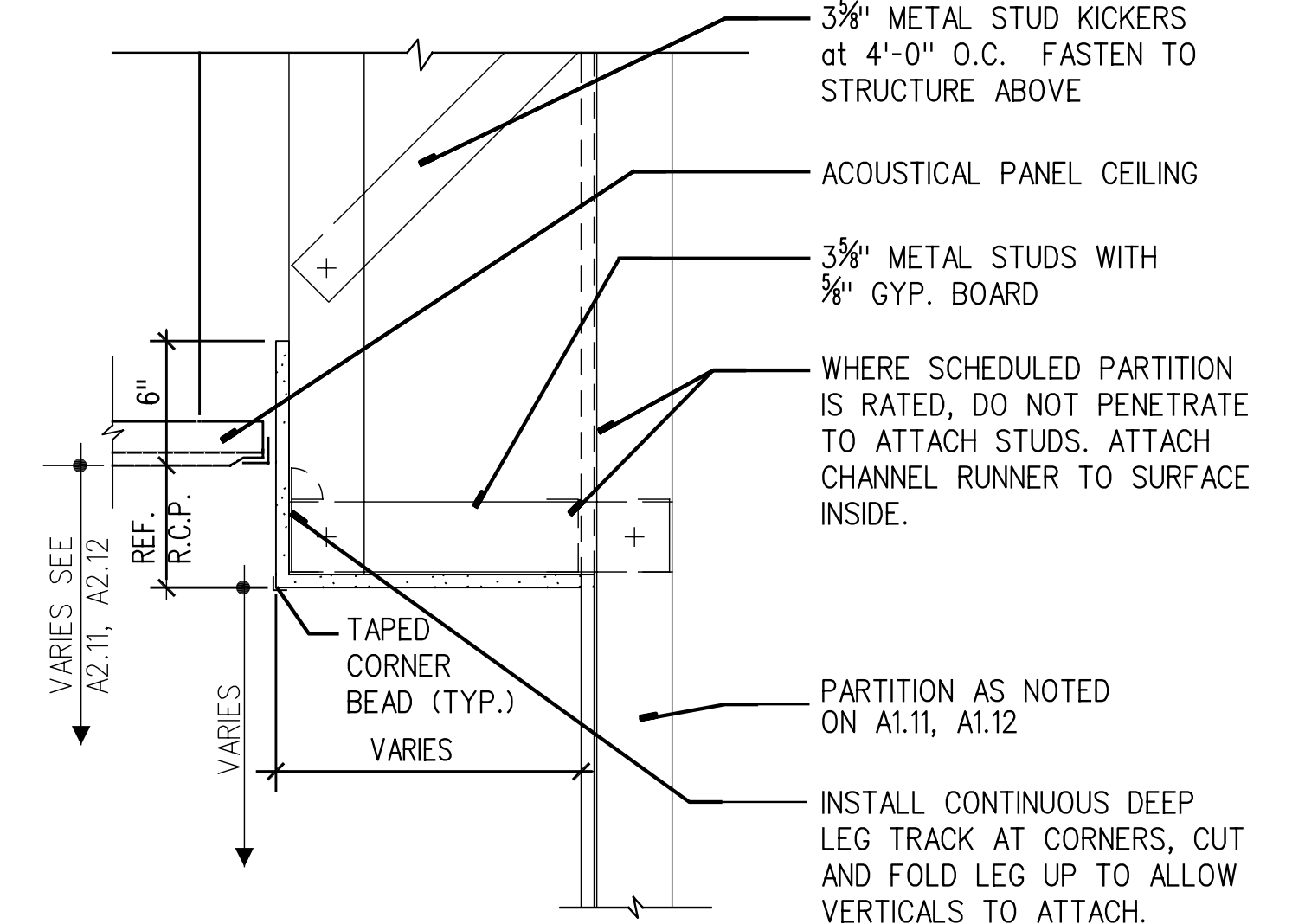
4 LIGHT DETAIL AT TOILET ROOM
1 1/2"=1'-0"



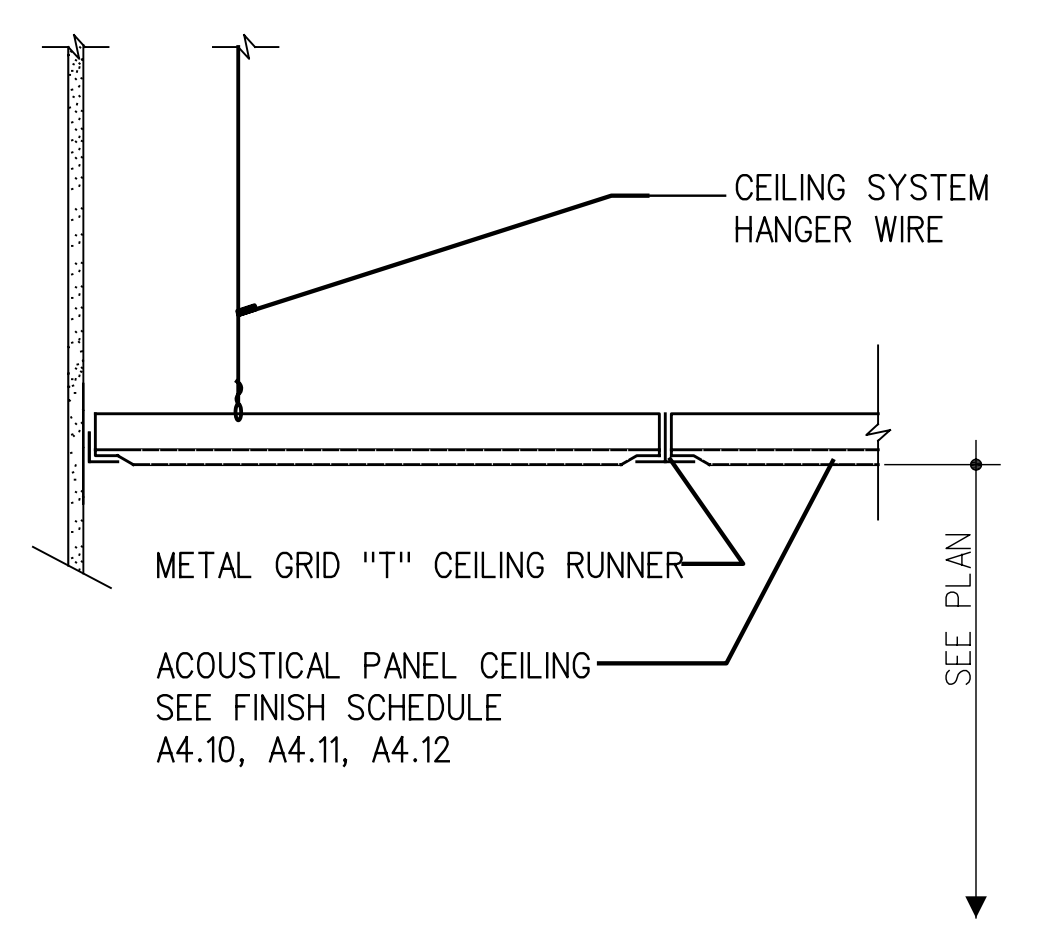
5A TYPICAL SOFFIT DETAIL AT RECEPTIONIST AREA
1 1/2"=1'-0"



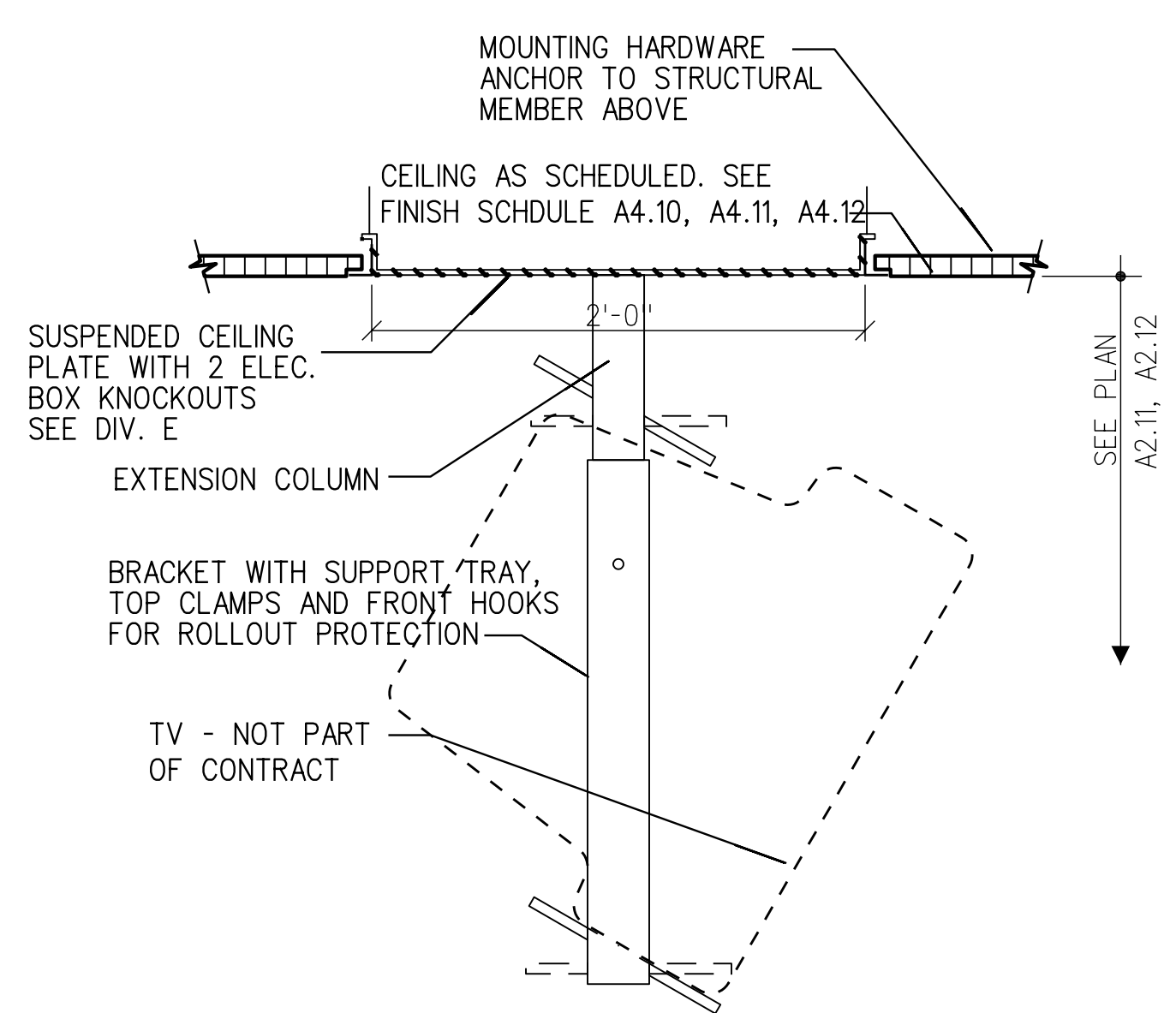
5 TYPICAL SOFFIT DETAIL AT RECEPTIONIST AREA
1 1/2"=1'-0"



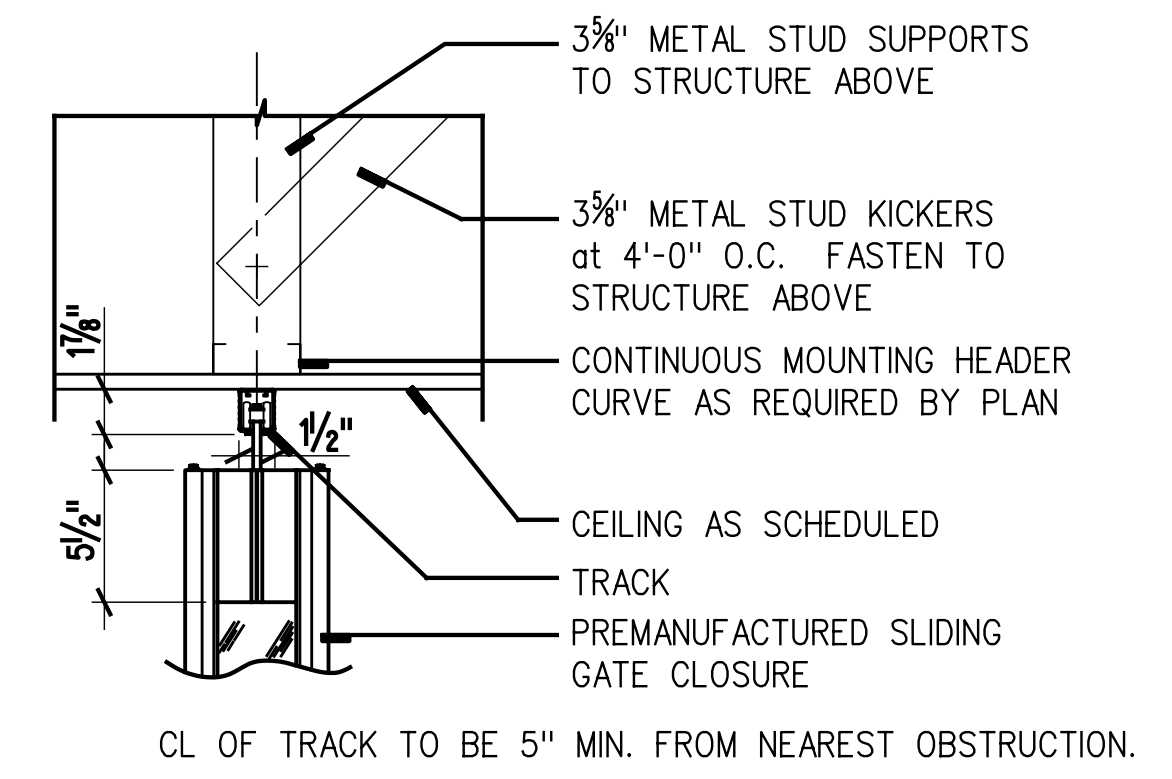
6 CEILING SECTION THROUGH SOFFIT
1 1/2"=1'-0"



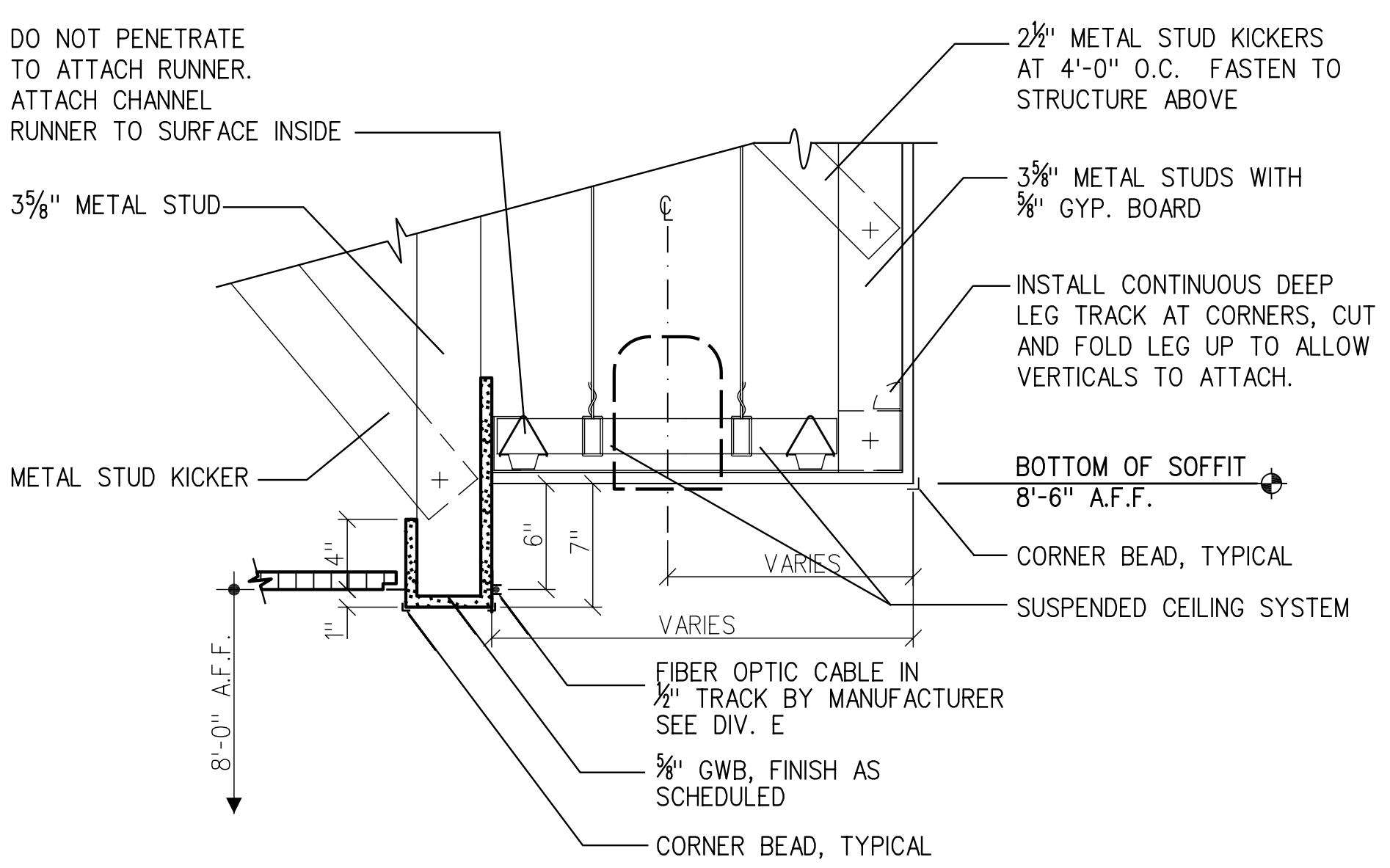
7 TYP. ACOUSTICAL PANEL CEILING DETAIL
1 1/2"=1'-0"



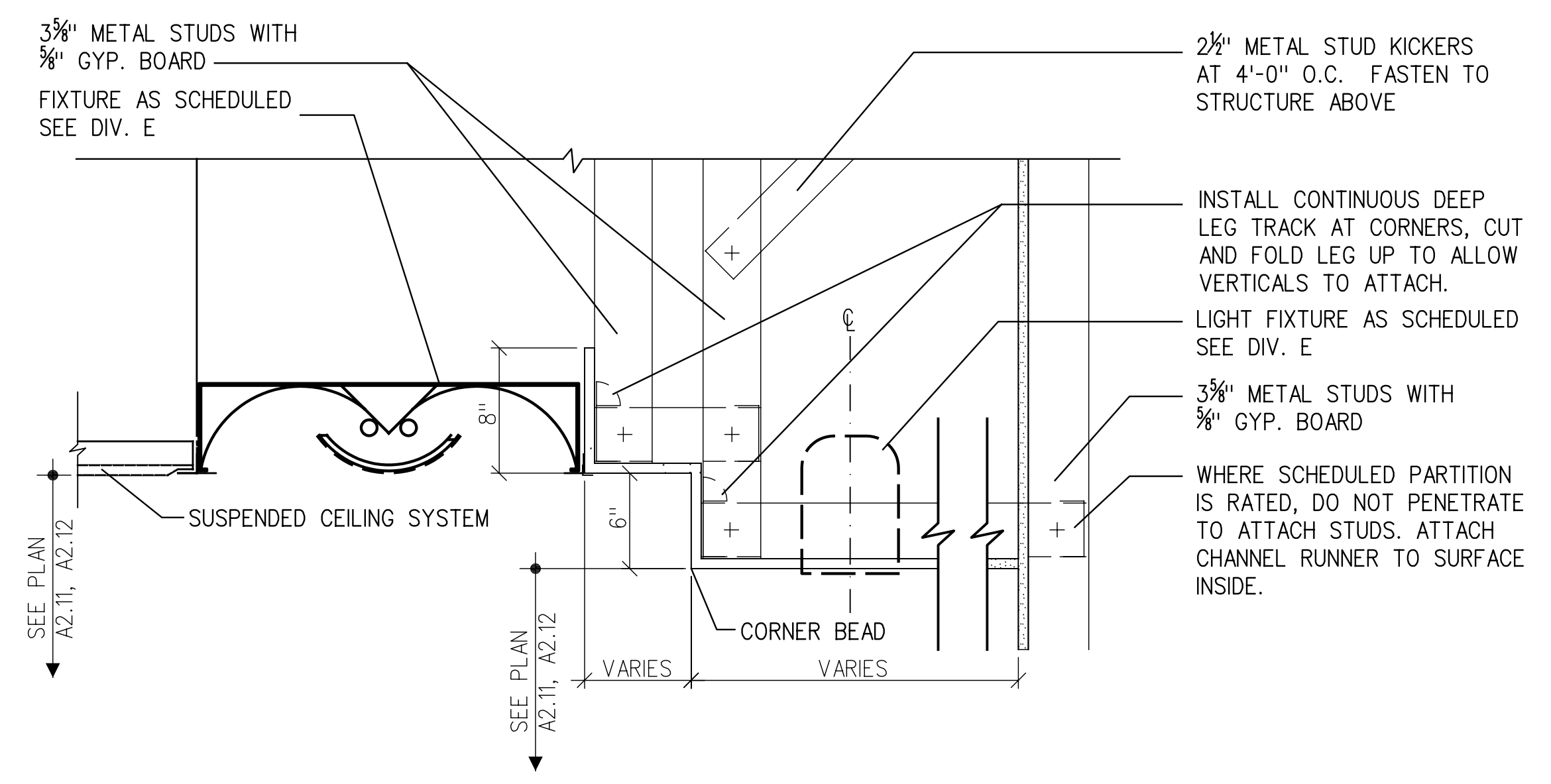
8 SUSPENDED TV CEILING MOUNTED CONNECTION
* SEE SPEC 11140
1 1/2"=1'-0"



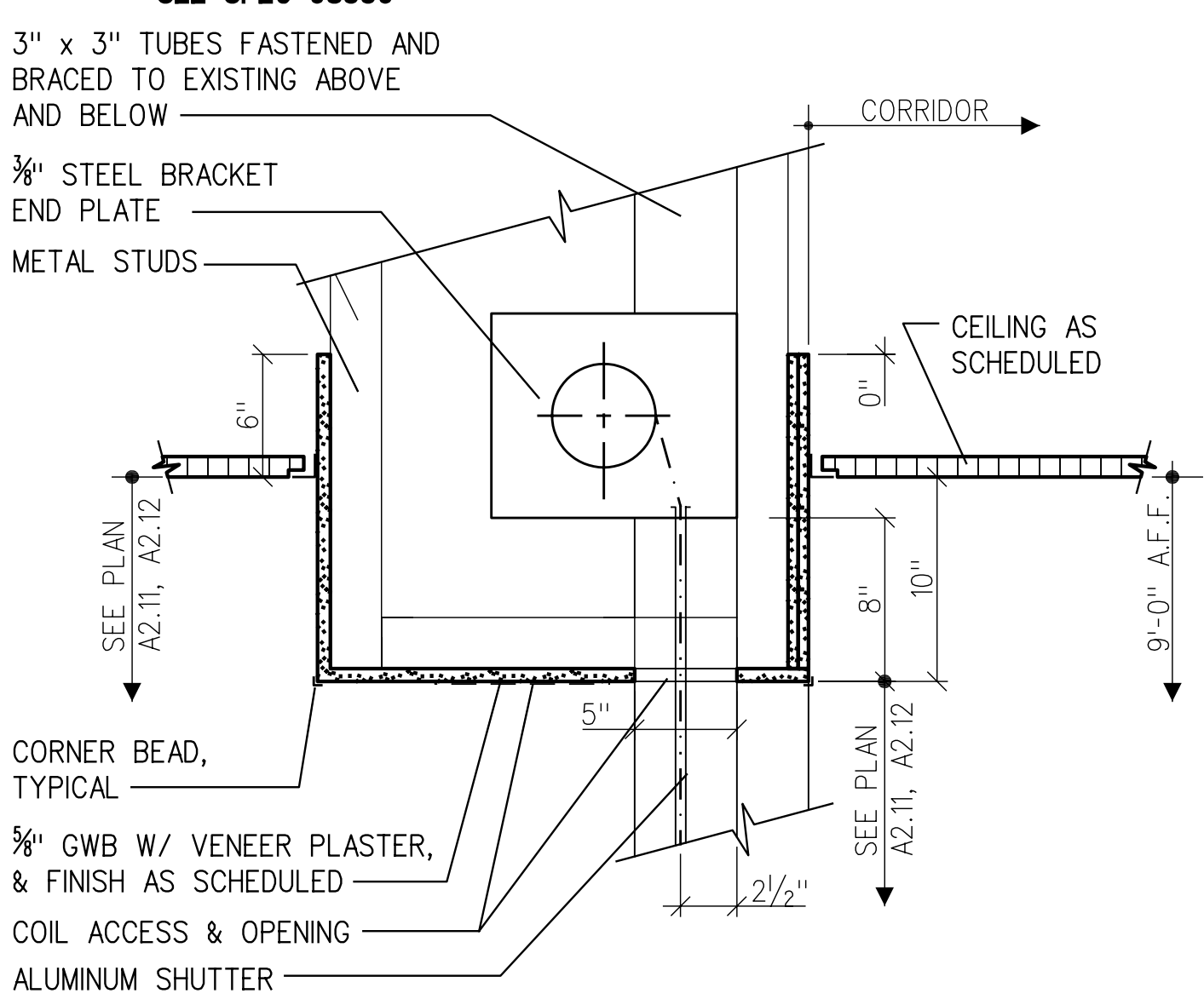
9 SECTION THROUGH TRACK, HANGER & ROLLER ASSEMBLY
* SEE SPEC 08350
1 1/2"=1'-0"



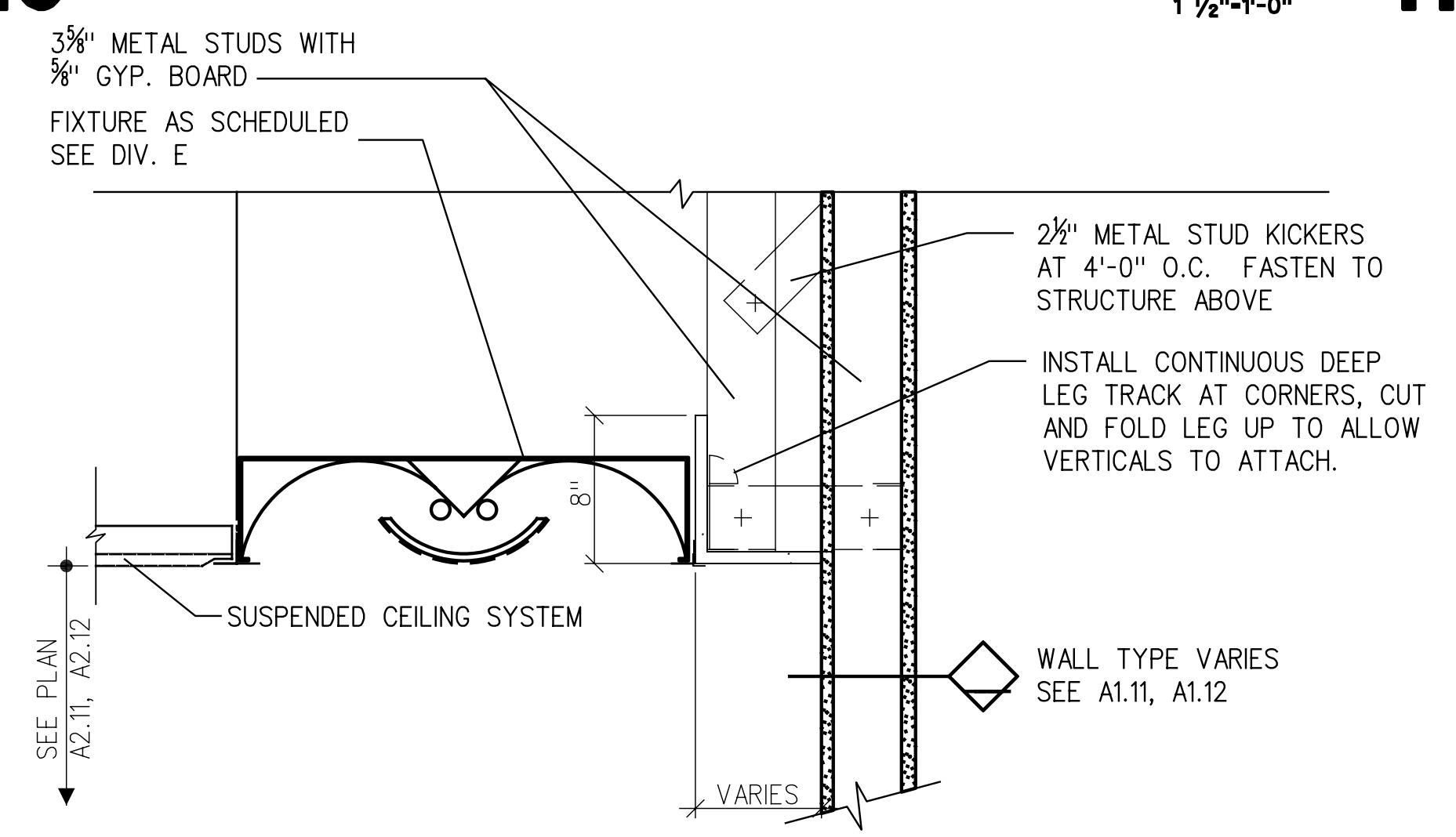
10 SECTION THROUGH BULKHEAD AND GYP. BD. SOFFIT
1 1/2"=1'-0"



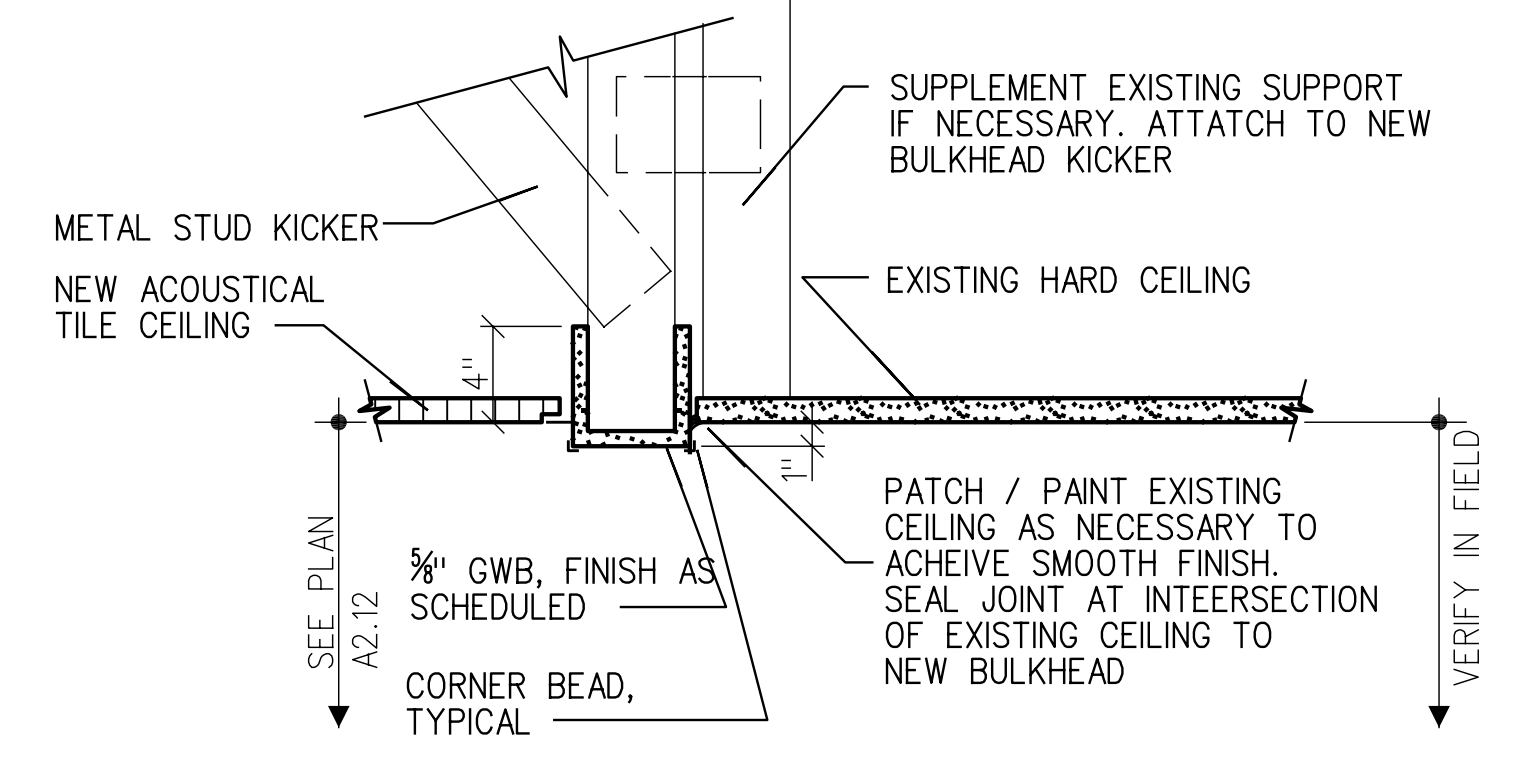
11 SOFFIT AT CORRIDOR LIGHT FIXTURE
1 1/2"=1'-0"



12 ALUMINUM SHUTTER (NON-RATED) SECTION
* SEE SPEC 08345
1 1/2"=1'-0"



13 SOFFIT AT CORRIDOR LIGHT FIXTURE
1 1/2"=1'-0"



14 BULKHEAD DETAIL AT INTERSECTION WITH EXISTING
1 1/2"=1'-0"