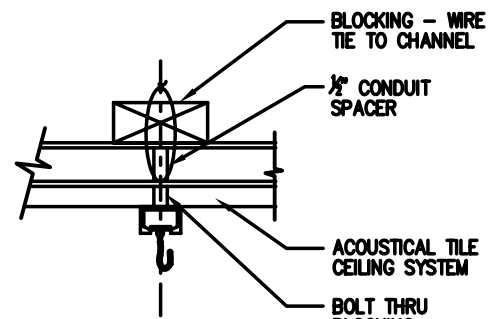
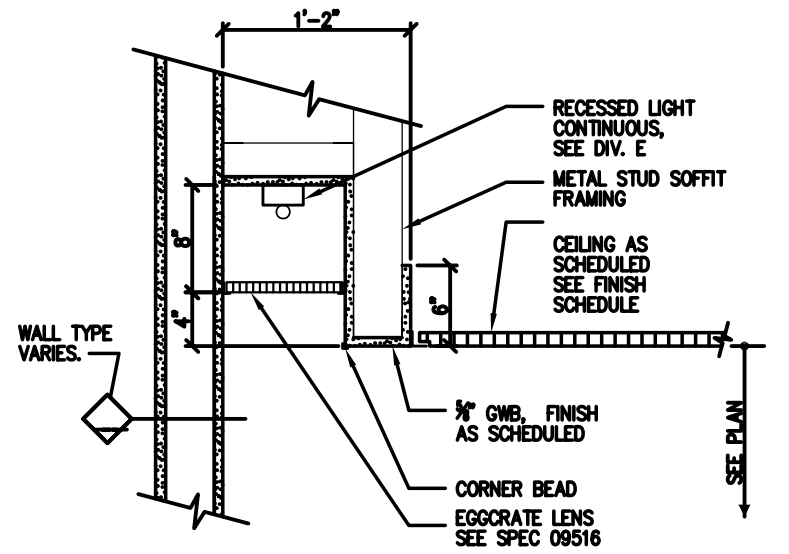


1 BULKHEAD DETAIL  
• VERIFY ALL CEILING HEIGHTS WITH PLAN  
N.T.S.

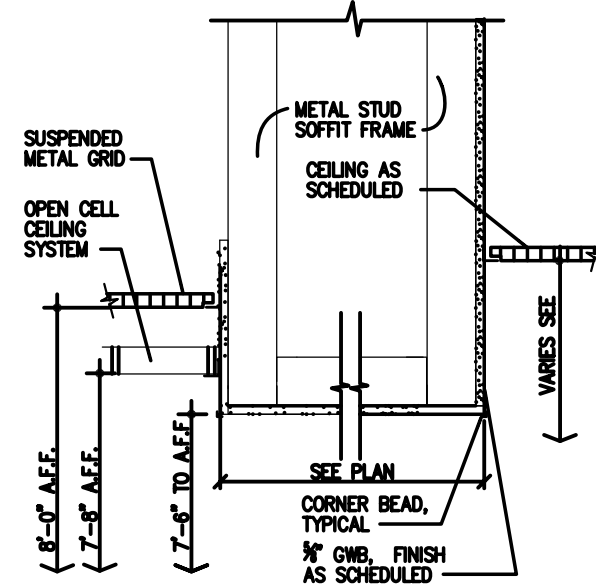
2 NOT USED



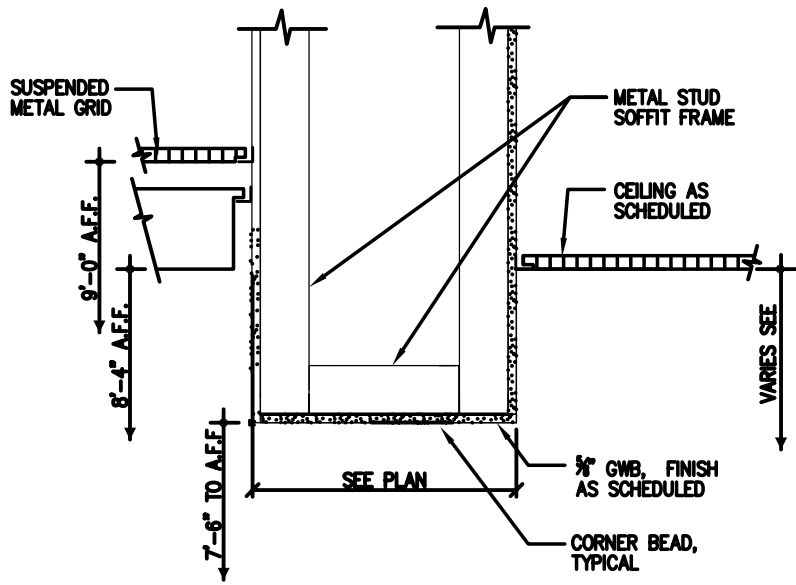
3 TYPICAL CUBICLE CURTAIN  
N.T.S.



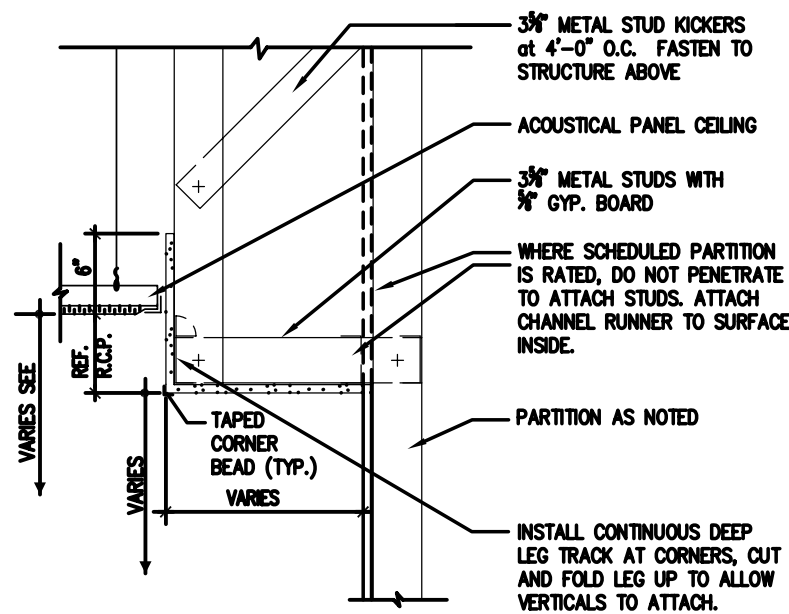
4 LIGHT DETAIL AT TOILET ROOM  
1"=1'-0"



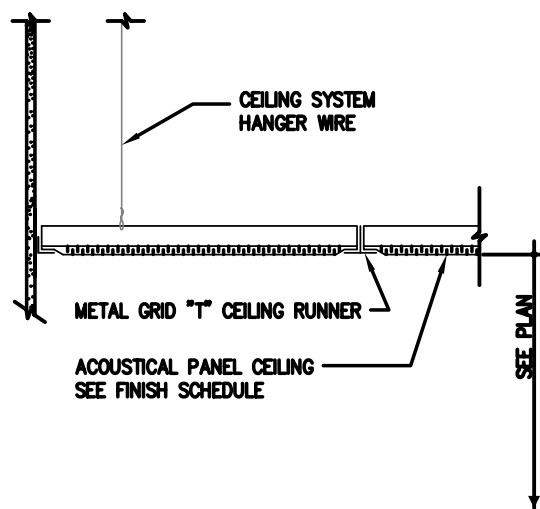
5A TYPICAL SOFFIT DETAIL AT RECEPTIONIST AREA  
N.T.S.



5 TYPICAL SOFFIT DETAIL AT RECEPTIONIST AREA  
1"=1'-0"

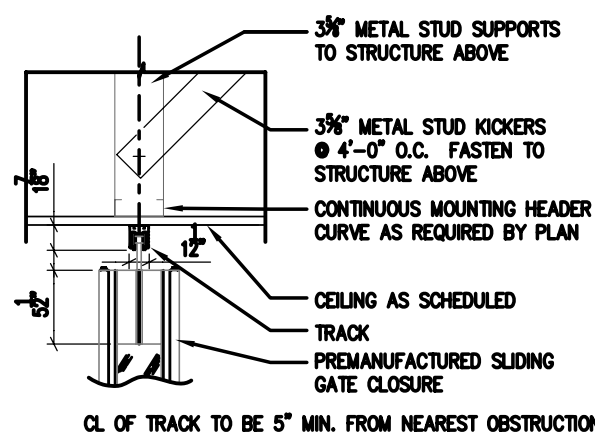


6 CEILING SECTION THROUGH SOFFIT  
1"=1'-0"



7 TYP. ACOUSTICAL PANEL CEILING DETAIL  
1"=1'-0"

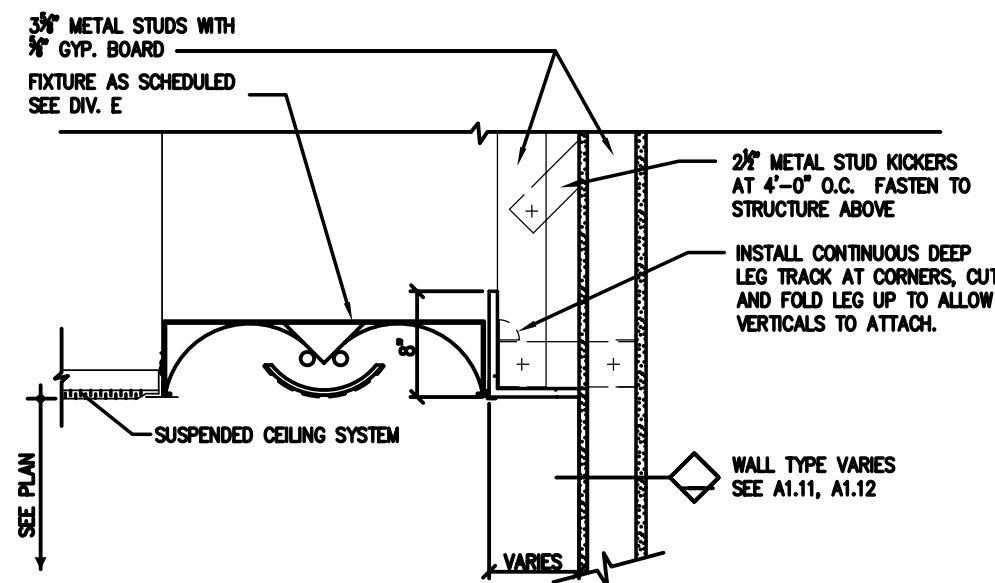
8 NOT USED



9 SECTION THROUGH TRACK, HANGER & ROLLER ASSEMBLY  
• SEE SPEC 08350  
1"=1'-0"

10 NOT USED

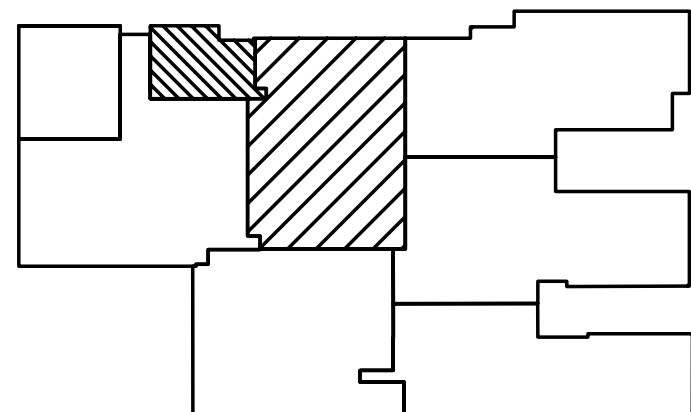
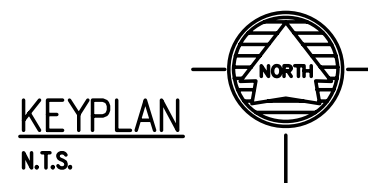
11 NOT USED



13 SOFFIT AT CORRIDOR LIGHT FIXTURE  
1"=1'-0"

12 NOT USED  
• SEE SPEC 08345

14 NOT USED



LITTLE ROCK A.F.B.  
ARKANSAS

APP'D	BY	Date	Revision/Issue	No.

PROJECT TITLE REPAIR MEDICAL CENTER PH 3 LITTLE ROCK AFB, ARKANSAS	SHEET TITLE CEILING DETAILS
DRAWN BY RJR	LEAD DESIGNER AM
TECH REVIEWER KF	PROJECT NUMBER NKA06-8001
DESIGNED BY KF	SHEET
DATE 8-11-06	A5.30
SCALE AS NOTED	17 OF 37