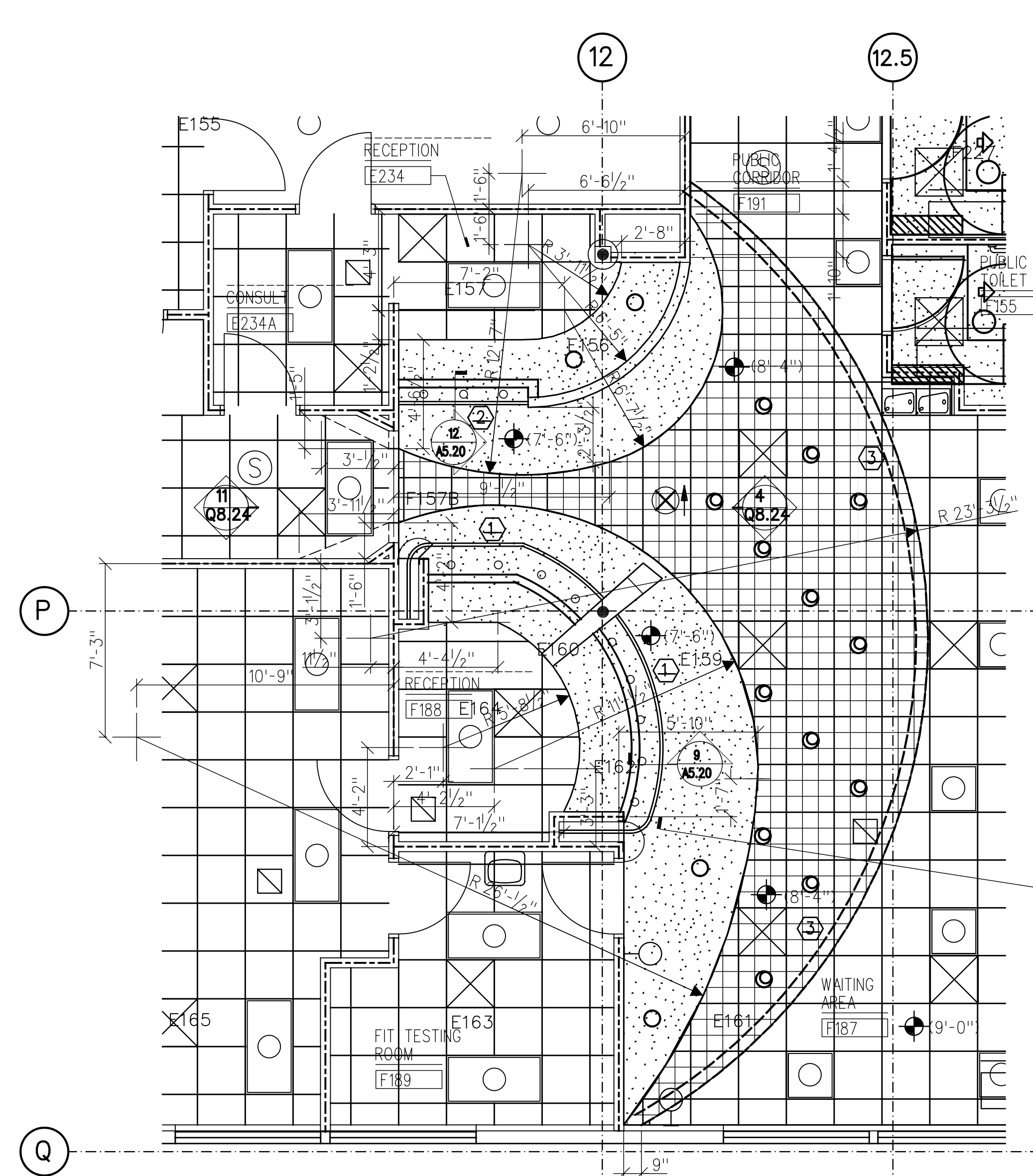


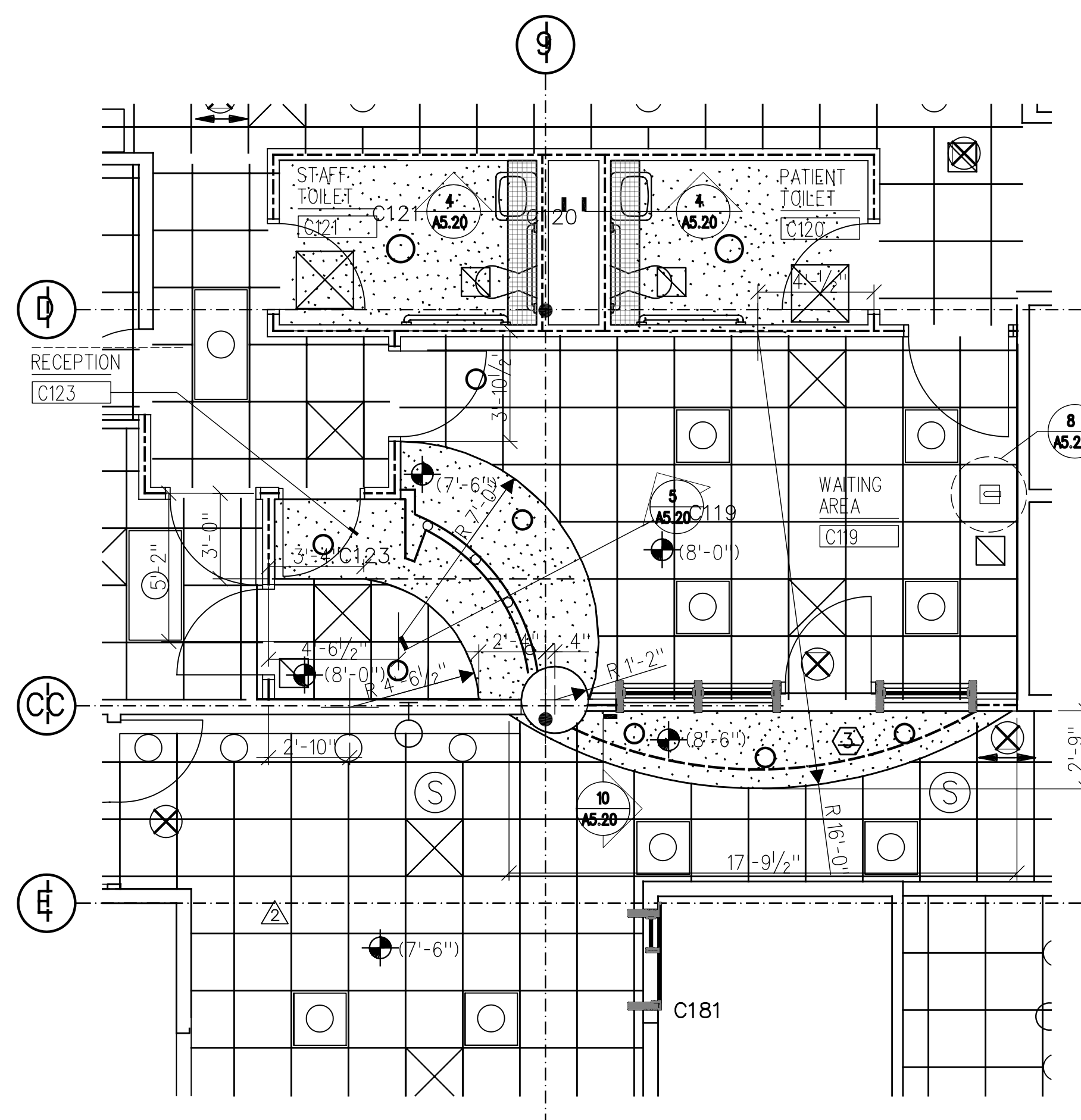
1 ADMIN / PATIENT WAITING - F172 / F171

SCALE 1/4"=1'-0"



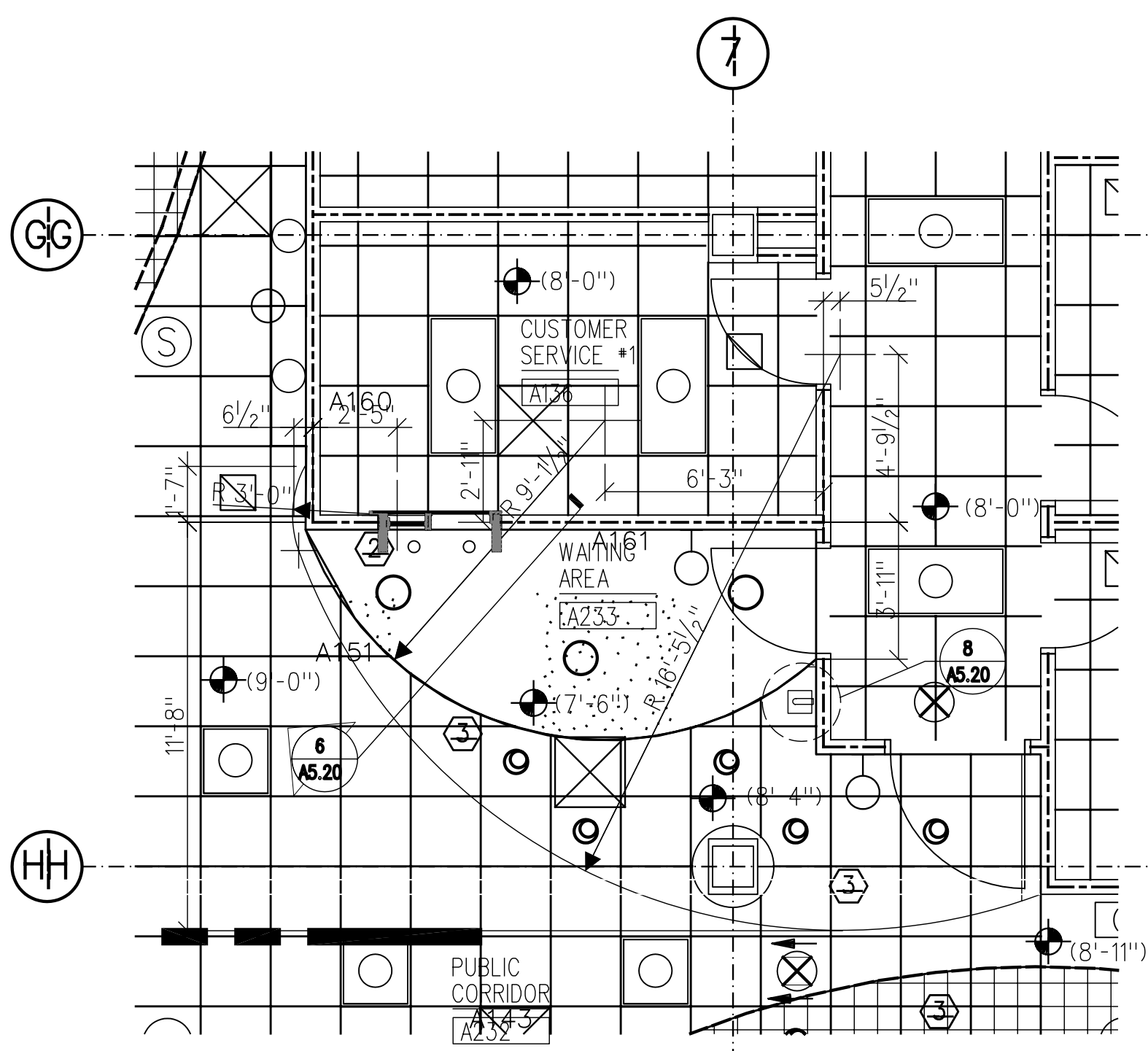
2 RECEPTION - F188 AND E234

SCALE 1/4"=1'-0"



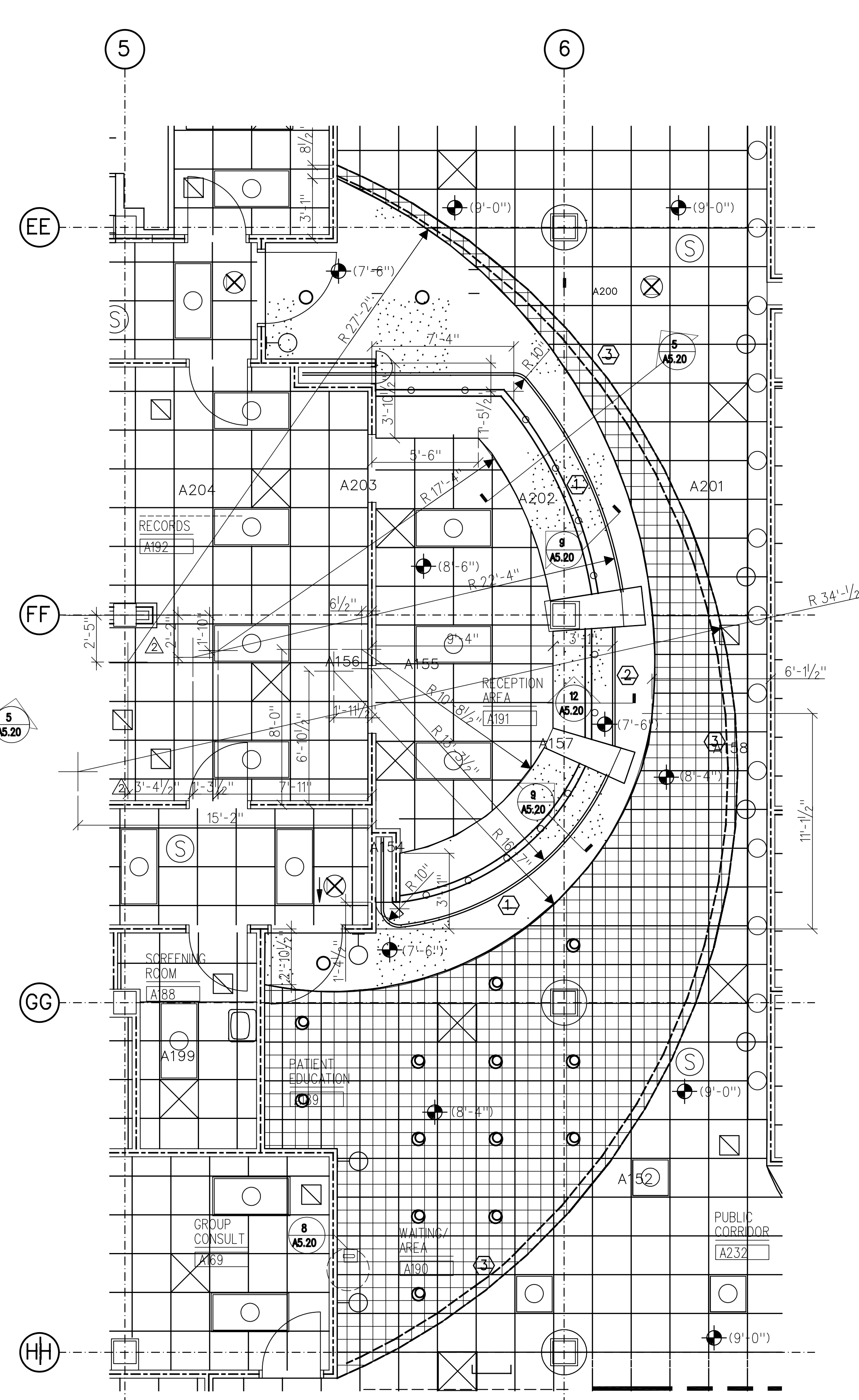
3 RECEPTION - C123

SCALE 1/4"=1'-0"



4 WAITING AREA - A233

SCALE 1/4"=1'-0"



5 RECEPTION - A191

SCALE 1/4"=1'-0"

CEILING LEGEND

	1X4 FLUORESCENT TROFFER OR WALL WASHER		SUPPLY DIFFUSERS 2' X 2' OR 1' X 1'
	2X4 FLUORESCENT TROFFER		EXHAUST DIFFUSERS 2' X 2' OR 1' X 1'
	2X2 FLUORESCENT TROFFER		GYPSUM BOARD
	INCANDESCENT OR FLUORESCENT FIXTURE - RECESSED		CURTAIN TRACK A5180. REFER TO CEILING DETAIL #3 ON SHEET A5.20
	INCANDESCENT OR FLUORESCENT EMERGENCY OR NIGHT LIGHT FIXTURE - WALL MOUNTED		SIDE FOLDING SECURITY GATE TRACK
	EXIT LIGHT		FIBER OPTIC LIGHT STRIP - LOCATED AT EDGE OF SUSPENDED METAL CEILING
	UNIVERSAL-MOUNTED DIRECTIONAL ARROWS AS SHOWN ON DRAWINGS		TELEVISION BRACKET, CEILING MOUNTED A5215
	PENDANT FLUORESCENT FIXTURE		SPEAKER
	SEMI-RECESSED DOWN LIGHT FIXTURE		OPEN CELL CEILING SYSTEM, W/ 8"x8" LAY-IN PANEL CELLS
	PENDANT LIGHT FIXTURE		EGG GRATE LENS
	RADIAL DIMENSION CENTER MARK		SUSPENDED ACOUSTICAL CEILING SYSTEM
	INDICATES A CHANGE IN CURVE DIMENSION		
	CEILING MOUNTED LIGHT M7405		

KEY NOTES:

- SIDE FOLDING CLOSURE. SEE SHUTTER SCHEDULE A4.01 AND SPECIFICATION SECTION 08350.
- VERTICAL ROLLING SHUTTER. SEE SHUTTER SCHEDULE A4.01 AND SPECIFICATION SECTION 08345.
- FIBER OPTIC LIGHT CABLE. SEE SPECIFICATION SECTION 16500.

GENERAL NOTES:

- ENLARGED CEILING PLANS ARE SHOWN FOR DIMENSIONAL PURPOSES. SOFFITS, SUSPENDED METAL GRIDS AND CEILING TRACKS ARE DIMENSIONED. ALL OTHER ELEMENTS ARE SCREENED AND ARE SHOWN FOR CONTEXTUAL PURPOSES ONLY. ROOM NAMES ARE SHOWN FOR REFERENCE.
- SEE SHEET A2.11 AND A2.12 FOR DETAIL MARKS AND SHEET A5.20 FOR CEILING DETAILS.
- RECEPTION COUNTER CEILINGS NOT SHOWN ON THIS SHEET ARE DIMENSIONED ON A2.11 AND A2.12.
- SEE SHEET A1.11 AND A1.12 FOR ARCHITECTURAL DETAIL MARKS. REFER TO M, E, P DIVISIONS FOR FURTHER INFORMATION AND COORDINATION.