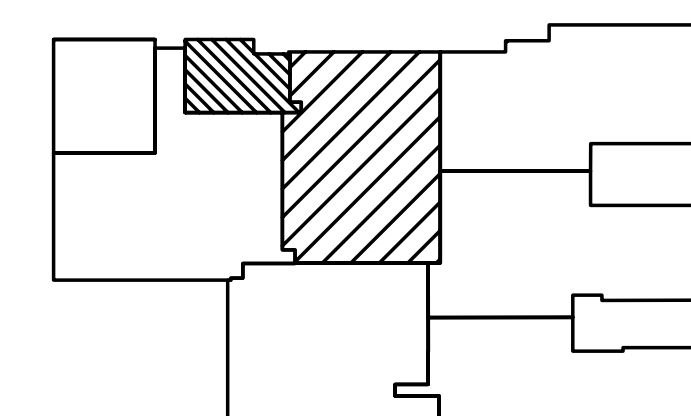
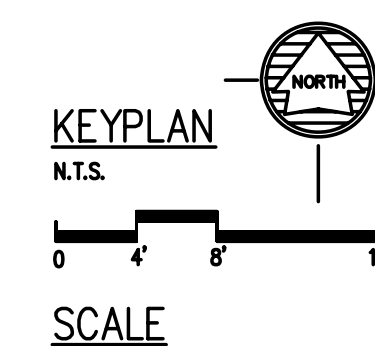




1. SOLID LINES INDICATE NEW CONSTRUCTION.
2. CONTRACTORS SHALL FIELD VERIFY ALL EXISTING CONSTRUCTION AND RELATED CONDITIONS PRIOR TO FABRICATION OR STARTING NEW CONSTRUCTION.
3. ALL ACOUSTIC CEILING PANELS TO BE NEW EXCEPT IN LAB AREA. ACOUSTIC CEILING TILES ARE TO BE FIELD CUT FROM STANDARD PANELS OF THE SAME PATTERN, THICKNESS AND COLOR AS THE ADJACENT TILES. CAREFULLY CUT THESE PANELS TO THE REQUIRED LENGTHS & THEN CAREFULLY FABRICATE A REVEAL EDGE TO ALL CUT SIDES OF THESE TILES AND SPRAY PAINT THESE NEW REVEAL EDGES TO MATCH THE TILES.
4. ALL LIGHTS, DIFFUSERS, EXIT SIGNS, AND SMOKE DETECTORS SHALL BE CENTERED IN TILE OR PANEL, UNLESS OTHERWISE NOTED. RELOCATED AND NEW SPRINKLER HEADS SHALL BE CENTERED ON ACOUSTIC PANELS. EXISTING SPRINKLER HEADS SHALL BE ACCOMMODATED BY NEW ACOUSTICAL CEILING GRID.
5. ALL CEILING EXPANSION JOINTS TO BE CONTINUOUS FROM WALL JOINT TO WALL JOINT.
6. SEE FINISH SCHEDULES A4.11 FOR REQUIRED CEILING MATERIALS FOR EACH AREA. IN ROOMS AND AREAS HAVING VARYING HEIGHTS.
7. SOFFITS MUST EXTEND 1" BEYOND CASEWORK AT BOTH FRONT & SIDES, UNLESS OTHERWISE NOTED.
8. SEE DRAWINGS M, P, AND E FOR COORDINATION OF MECHANICAL AND ELECTRICAL ITEMS.
9. ALL SOFFIT HEIGHTS ARE 7'-6" UNLESS NOTED OTHERWISE.
10. CENTER RECESSED LIGHTS IN CEILING TILES, AND/OR SOFFIT, UNLESS NOTED OTHERWISE.
11. ALL CEILING HEIGHTS ARE 8'-0" UNLESS NOTED OTHERWISE.
12. ALL GYP. SOFFITS TO BE PAINTED P-1 UNLESS OTHERWISE NOTED.
13. REFER TO DIV 09120 OPEN CELL CEILING SYSTEM FOR INFO ON 8" SUSPENDED METAL GRID.
14. SUSPENDED ACOUSTICAL CEILING SYSTEM SHALL EXTEND ABOVE OPEN CELL CEILING SYSTEM.
15. REFER TO CEILING LEGEND A.O.O.

KEYED NOTES:

- ① NOT USED
- ② RADIUS OF CEILING GRID TO ALIGN WITH RADIUS OF CARPET FLOOR FINISH. REFER TO FLOOR PATTERN PLAN. OPEN CELL CEILING GRID @ 7"–8" AFF.
- ③ RADIUS OF GYP BD SOFFIT TO ALIGN WITH THE INSIDE RADIUS OF TRANSACTION COUNTERTOP AND WORKSURFACE. GYP BD SOFFIT @ 7"–6" AFF. PAINT GYP BD SOFFIT P-1.



AS BUILTS

1 REFLECTED CEILING PLAN

SCALE: 1/8" = 1'-0"

[illegible]

PROJECT TITLE

REPAIR MEDICAL CENTER PH 3
LITTLE ROCK AFB, ARKANSAS

REFLECTED CEILING PLAN

DRAWN BY RJR	99 LEAD DESIGNER AM
TECH REVIEWER AM	PROJECT NUMBER NKAK 06-8001
DESIGNED BY AM	SHEET A2.11
DATE 8-11-06	
SCALE 1/8" = 1'-0"	9 OF 37