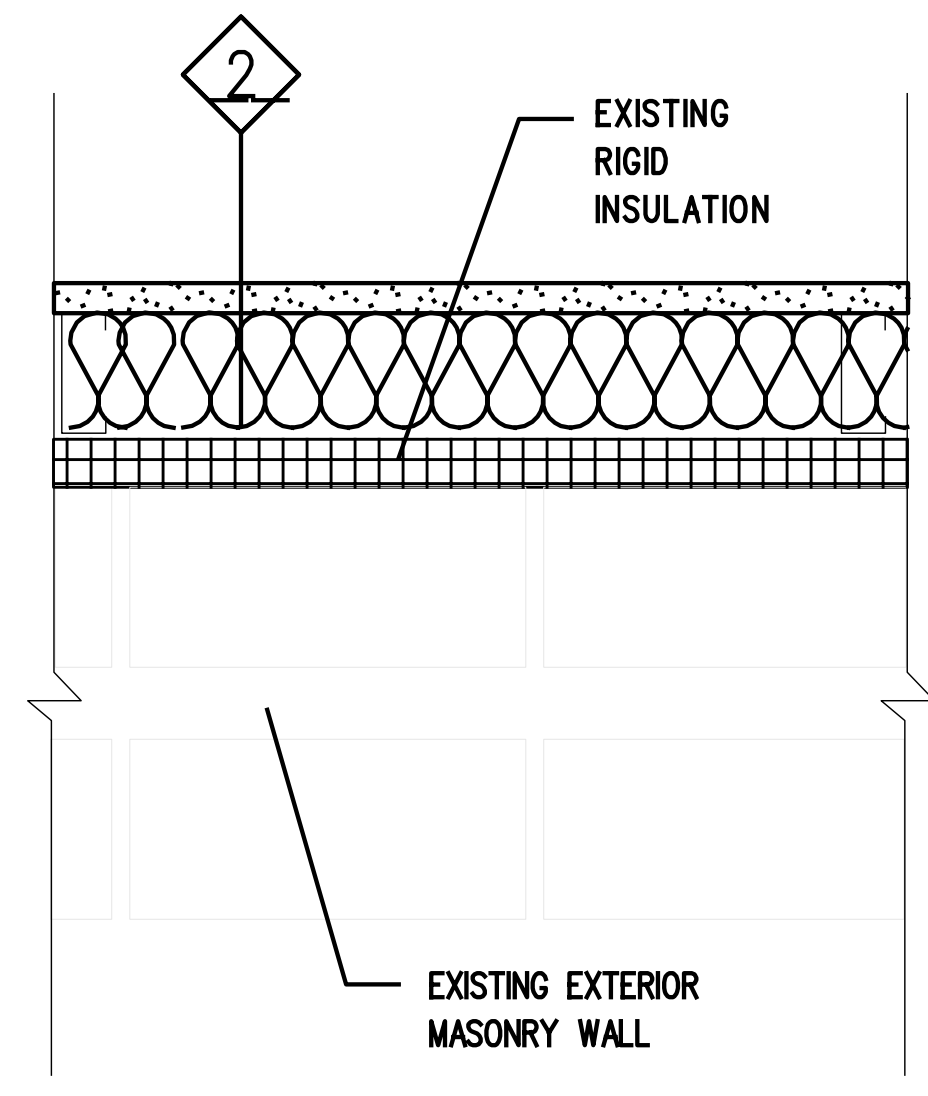
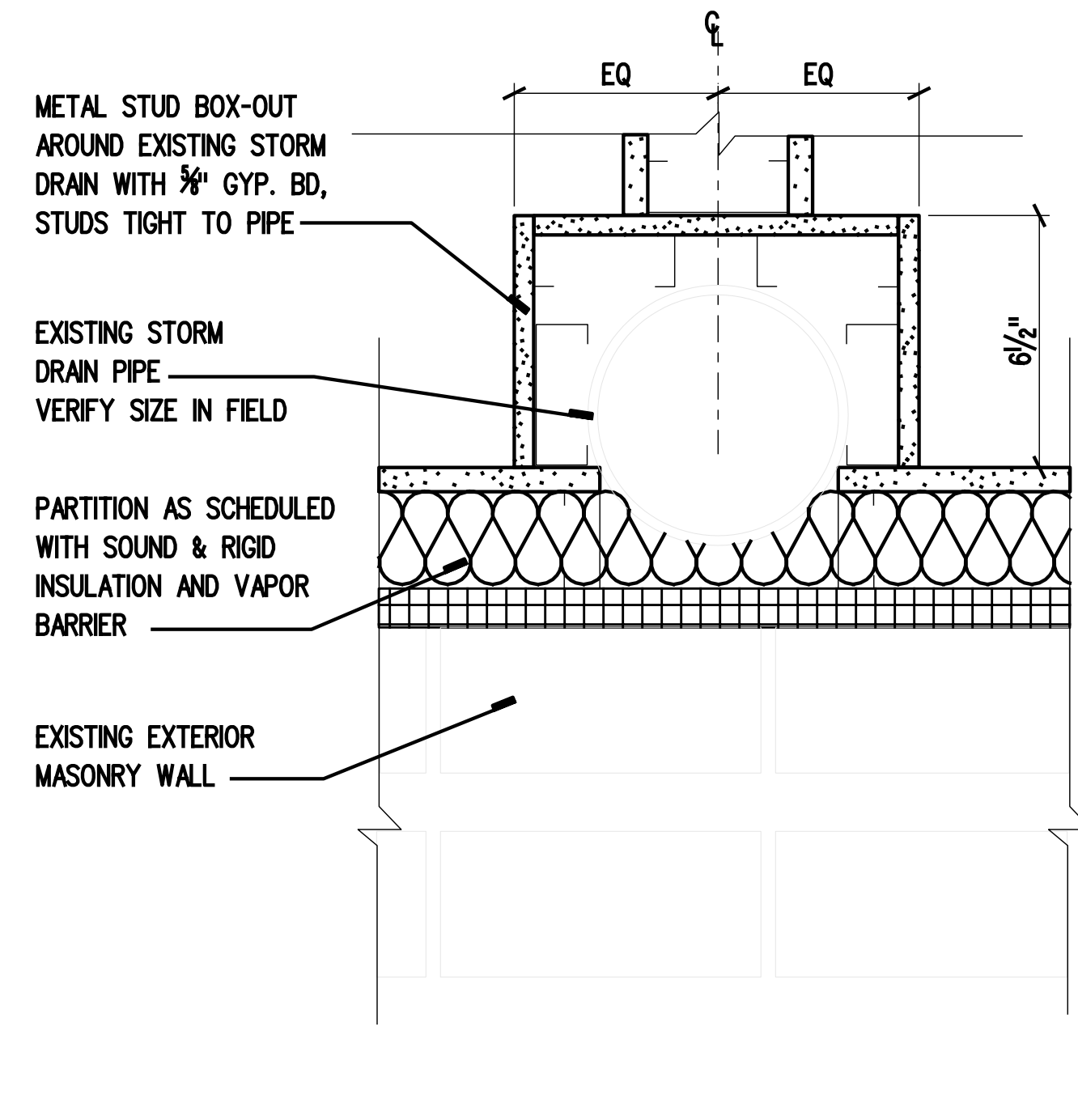


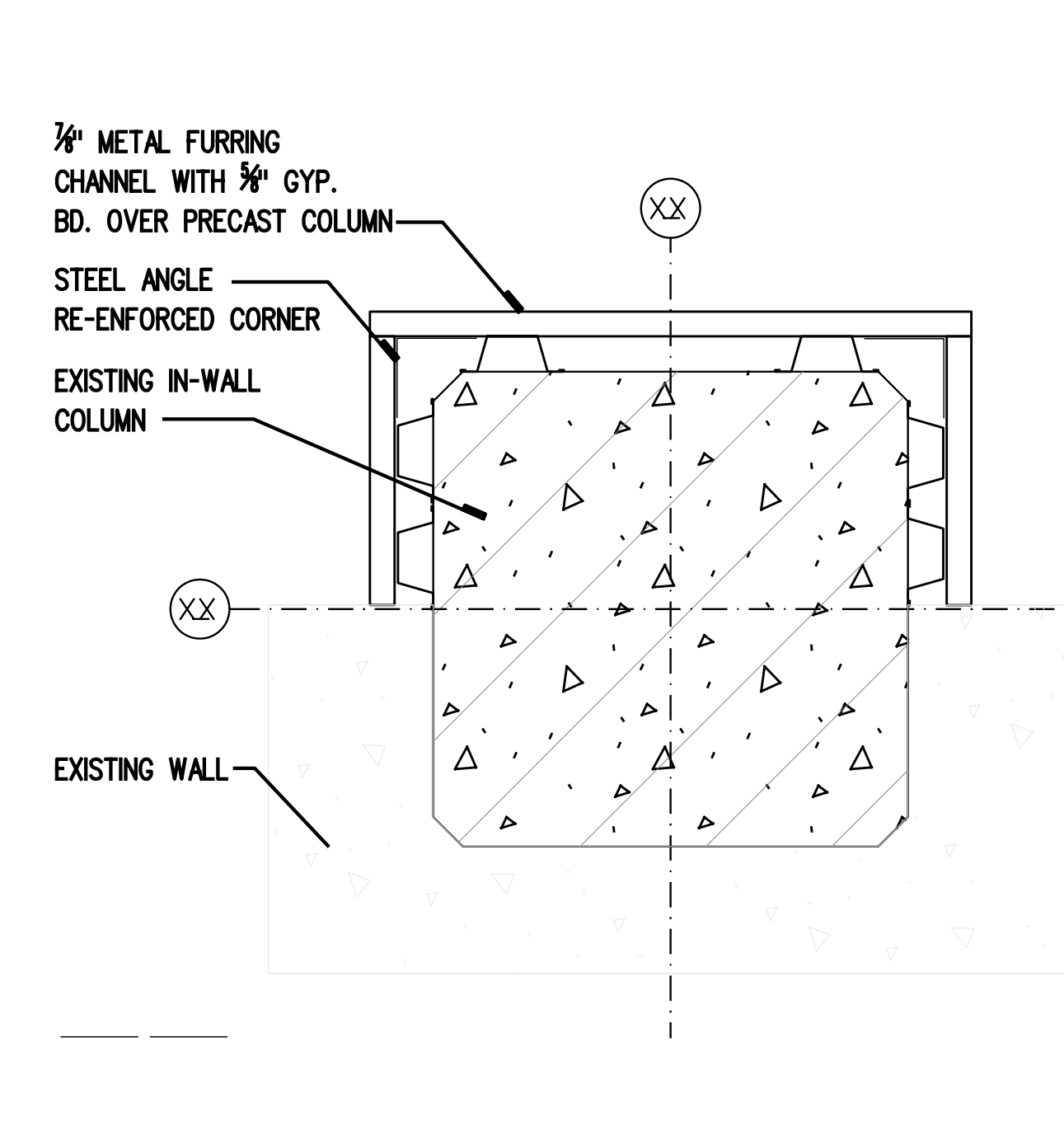
1 PARTITION INTERSECTION AT SOUTH WALL
** SEE SECTION DETAIL 2/A5.30
SCALE 3 "1'-0"



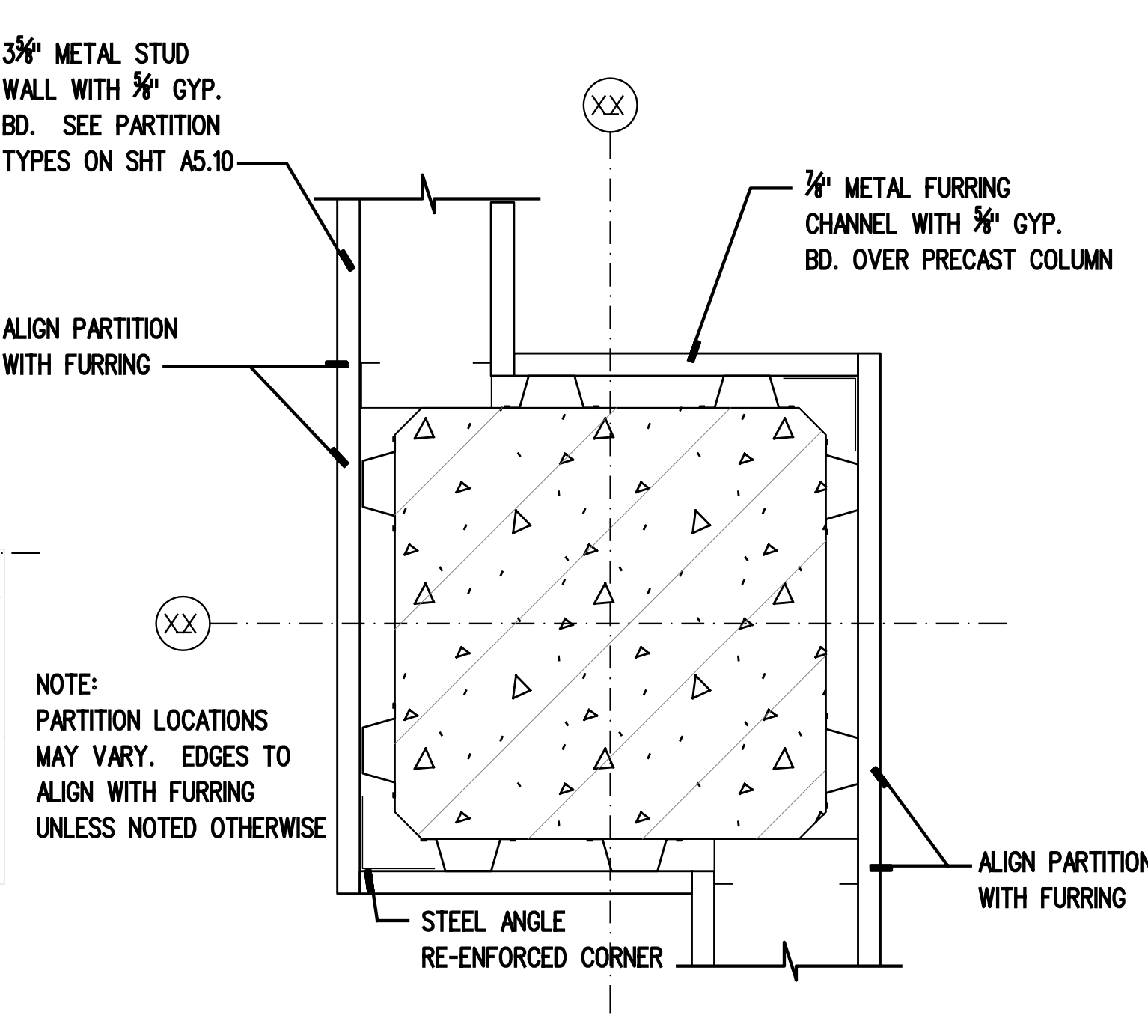
2 SOUTH WALL
** SEE SECTION DETAIL 1/A5.30
SCALE 3 "1'-0"



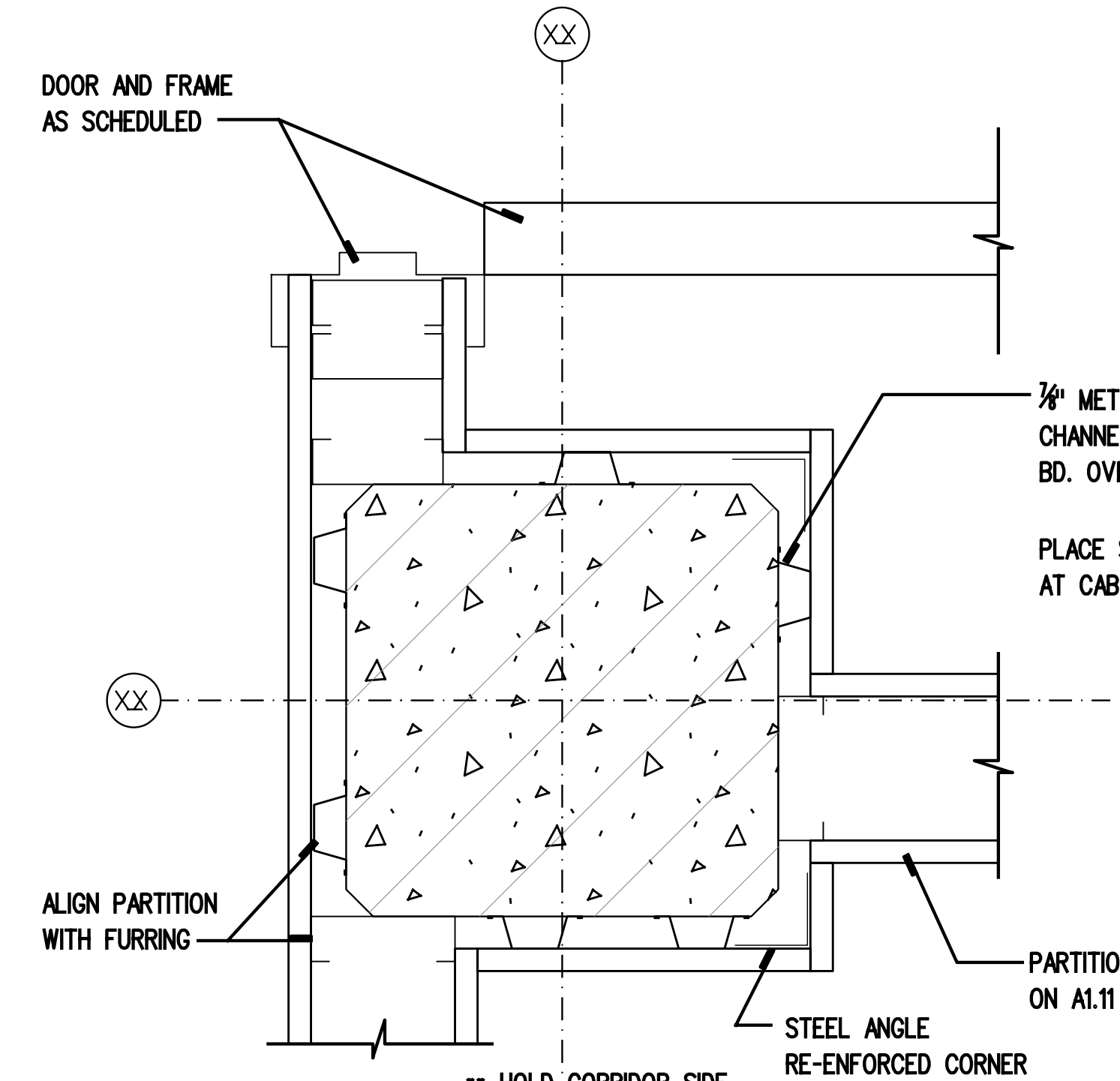
3 EXISTING STORM DRAIN AT SOUTH WALL
SCALE 3 "1'-0"



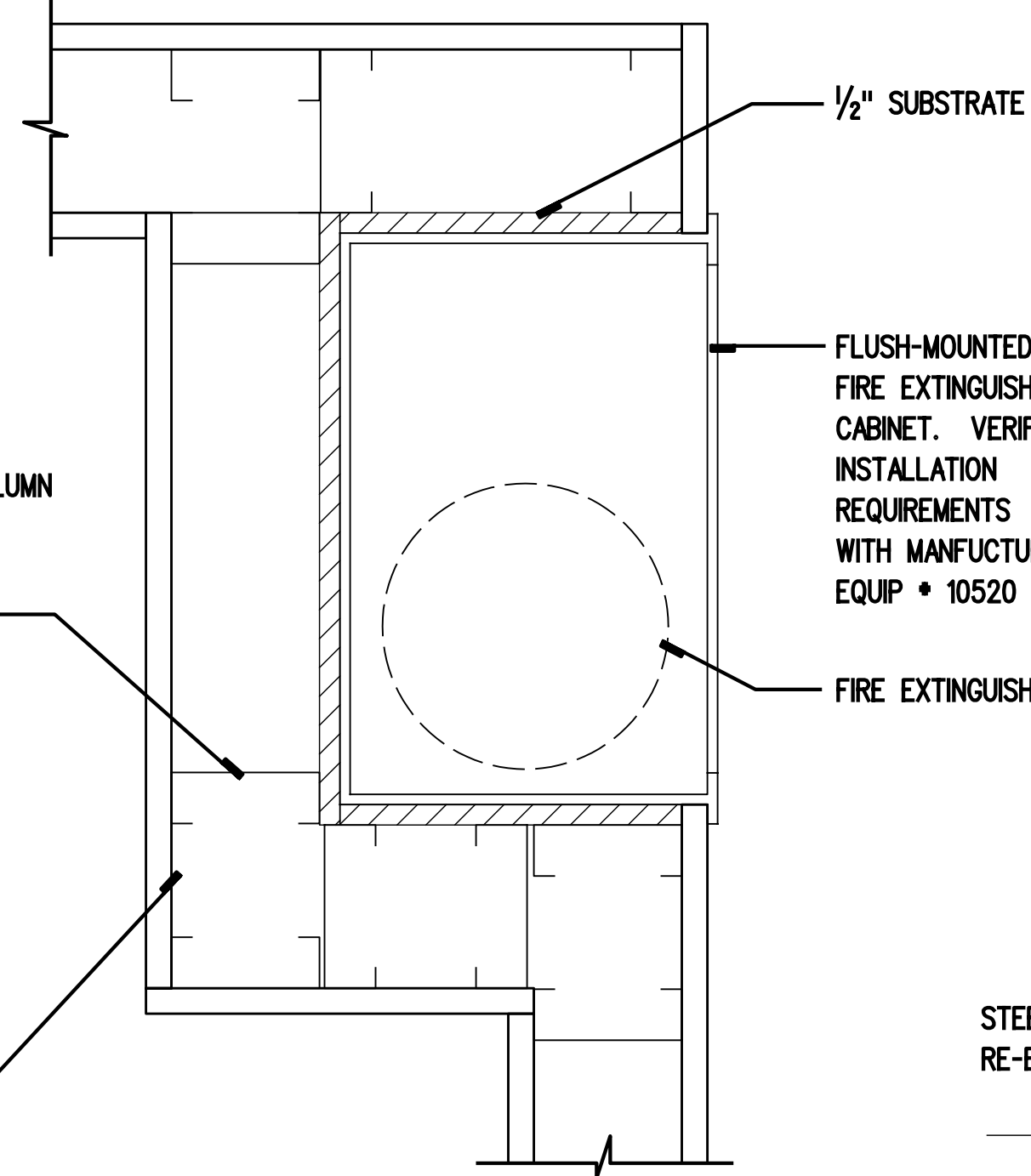
4 FURRING AT EXISTING COLUMN IN EXISTING WALL
SCALE 3 "1'-0"



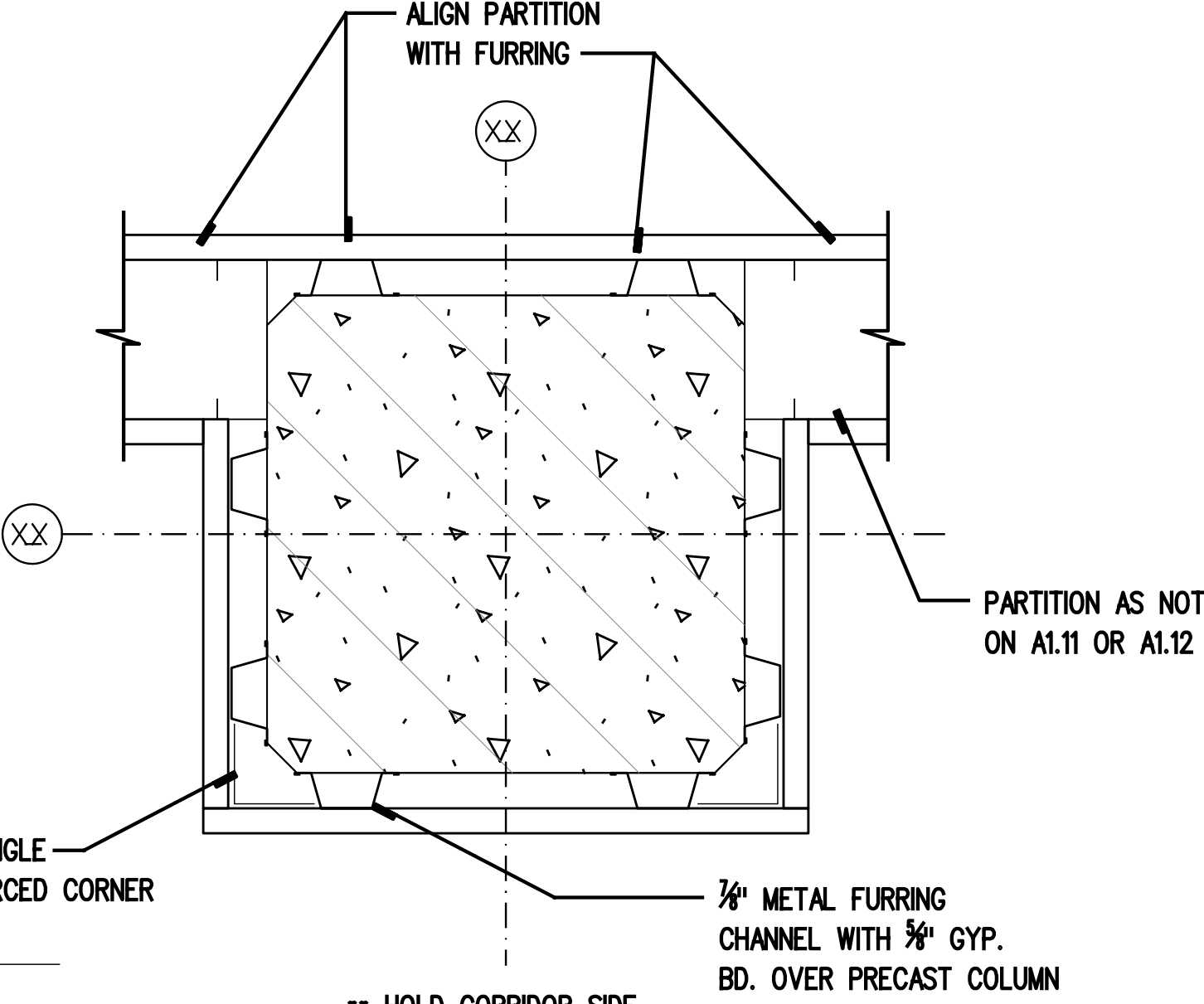
5 FURRING AT COLUMN
SCALE 3 "1'-0"



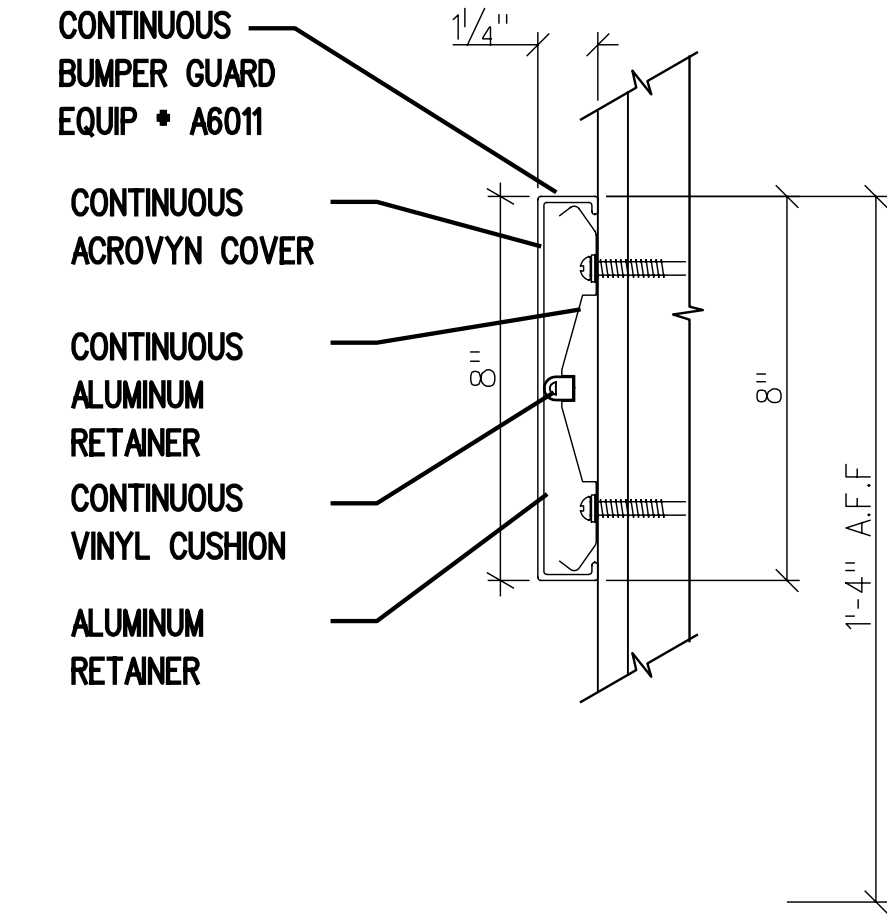
6 COLUMN FURRING AT DOOR
SCALE 3 "1'-0"



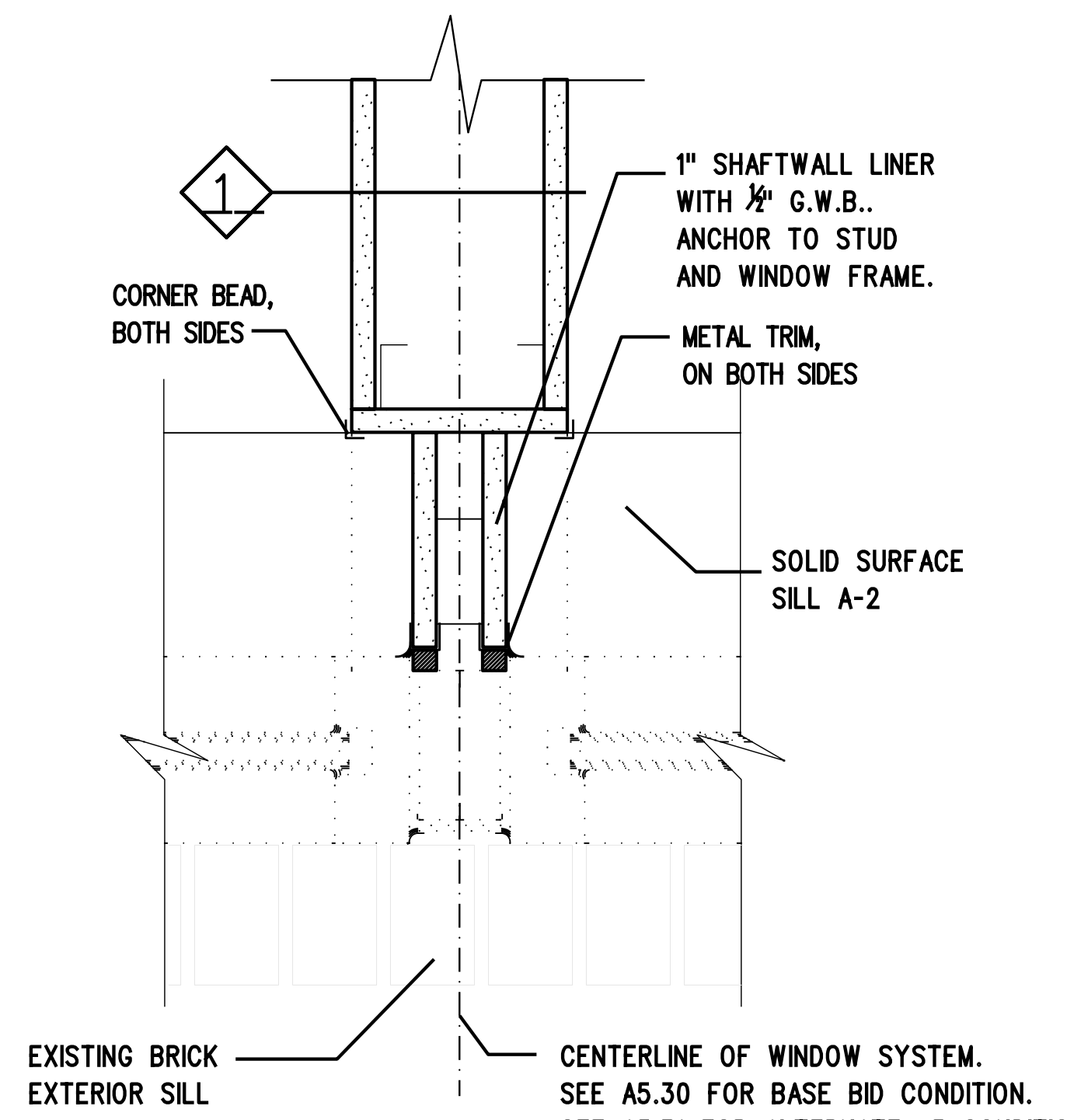
7 FIRE EXTINGUISHER CABINET
SCALE 3 "1'-0"



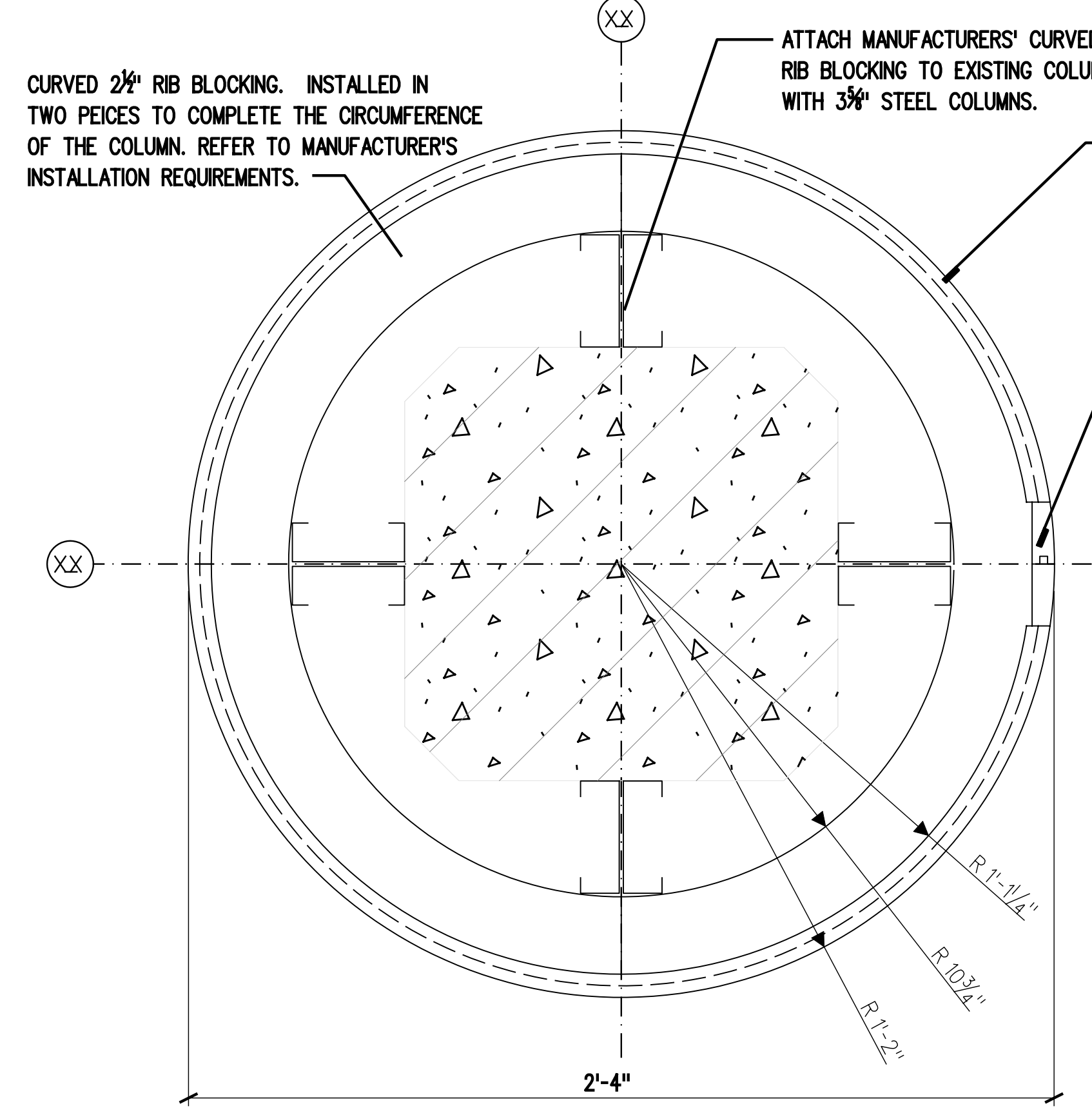
8 FURRING AT EXISTING COLUMN
SCALE 3 "1'-0"



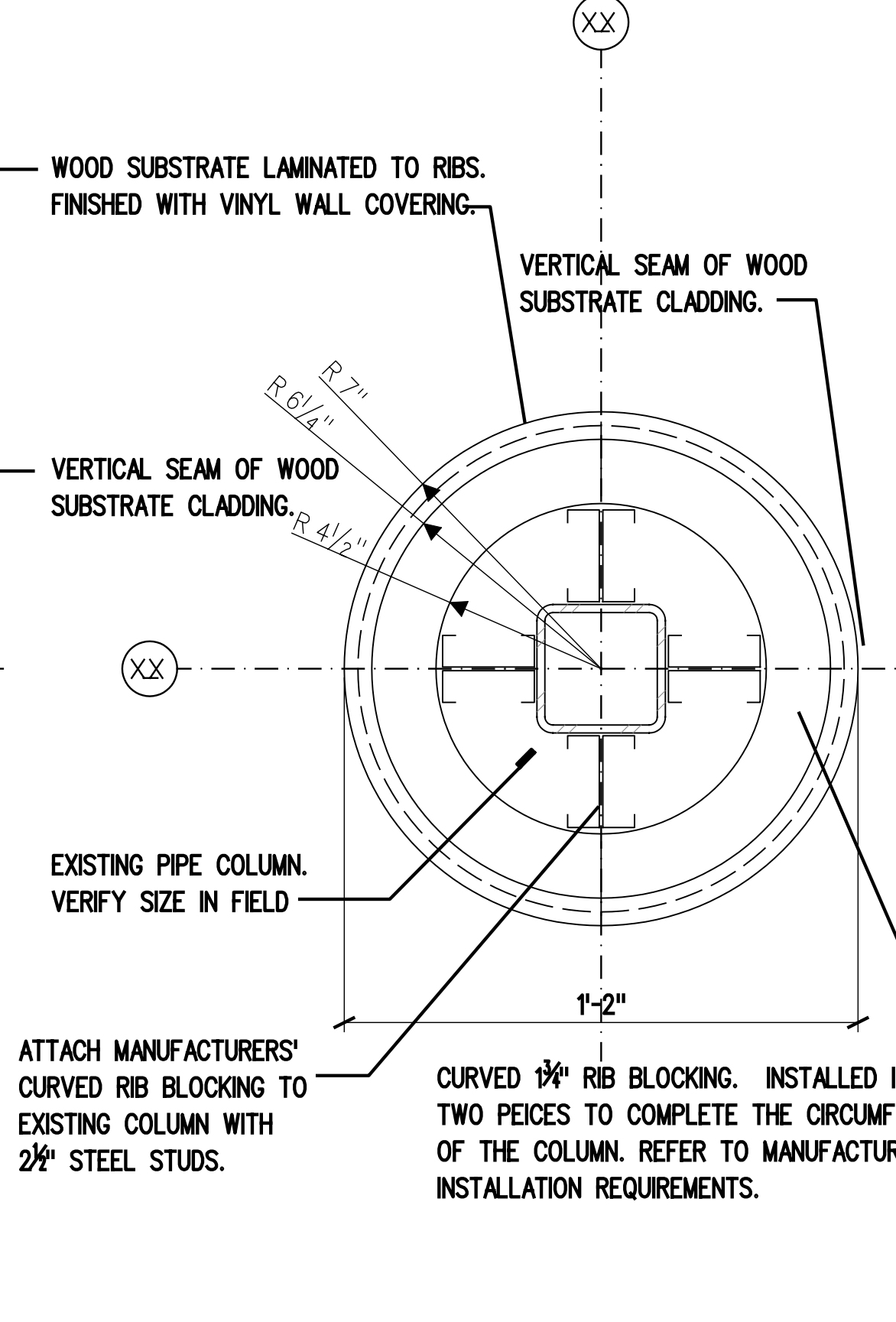
9 BUMPER GUARD SECTION
SCALE 3 "1'-0"



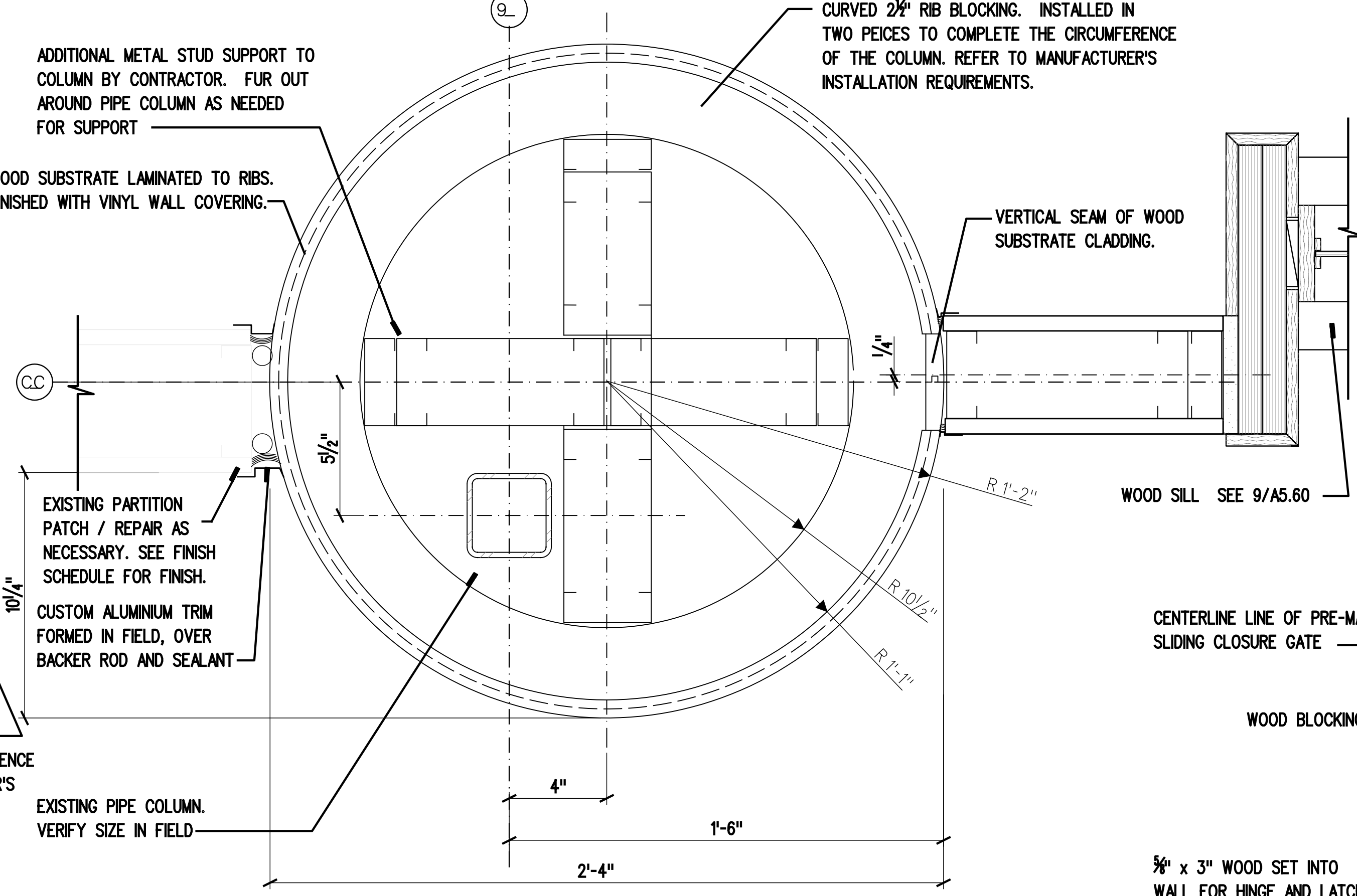
10 PARTITION ABUTTING SOUTH WALL AT GLAZING 5'-0" A.F.F.
SCALE 3 "1'-0"



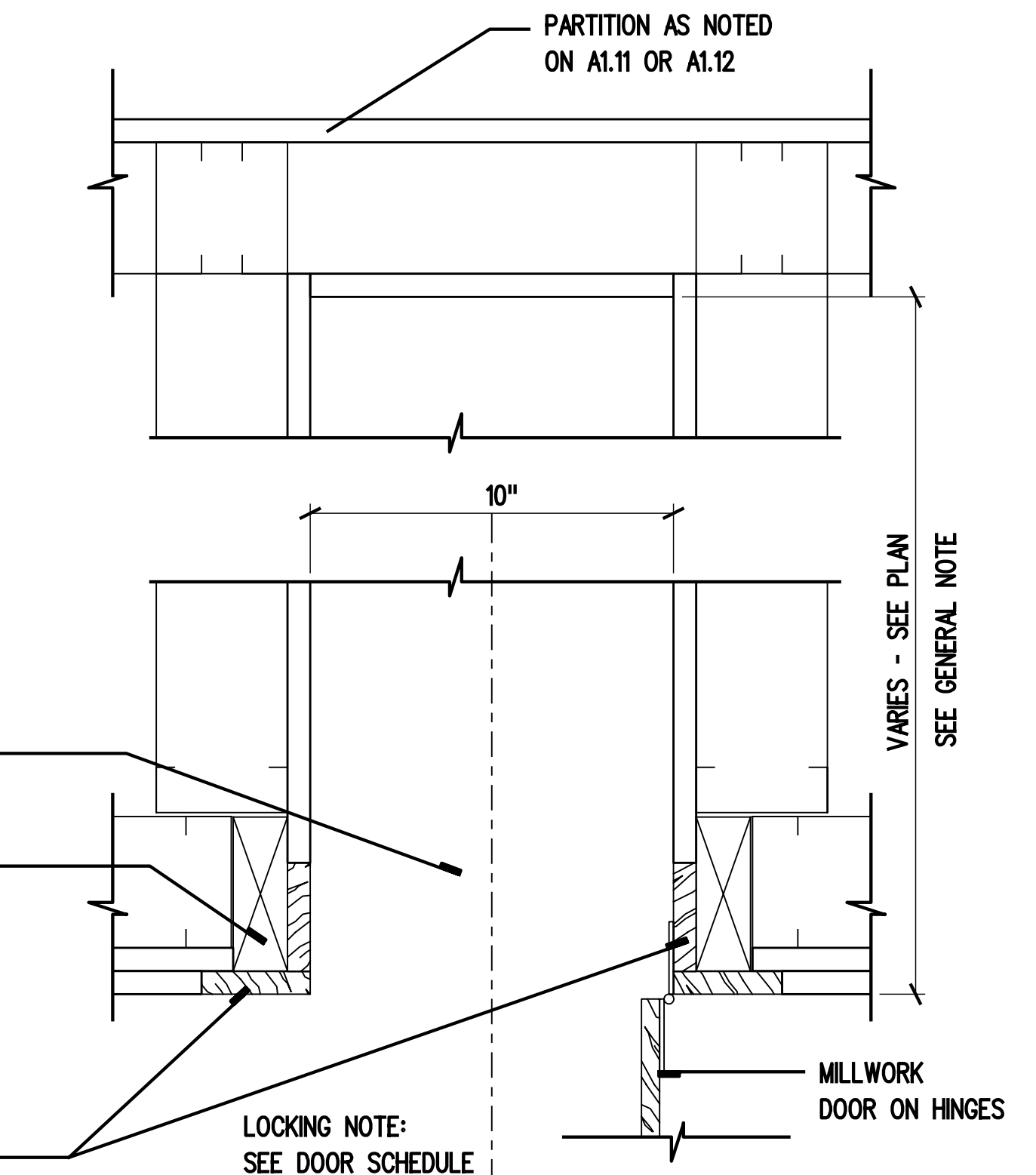
11 CYLINDER COLUMN CLADDING
SCALE 3 "1'-0"



12 CYLINDER COLUMN CLADDING
SCALE 3 "1'-0"



13 CYLINDER COLUMN CLADDING
SCALE 3 "1'-0"



14 STORAGE POCKET FOR SIDE FOLDING CLOSURE
** SEE DETAIL 10/A5.50
SCALE 3 "1'-0"

US Army Corps of Engineers
Huntsville
Alabama

REVISIONS	DATE	DESCRIPTION	BY	CHKD	APP'D
1	8/01/2005	ISSUED FOR BID			
2	10/01/2003	AMENDMENT			

DESIGNED BY: DATE: 10/10/2003
DRAWN BY: PROJECT NO.: 61503
CHECKED BY: DRAWING CODE:
REVIEWED BY: SOLICITATION NUMBER:

U.S. ARMY ENGINEERING AND SUPPORT CENTER
CORPS OF ENGINEERS
HUNTSVILLE, ALABAMA

EARTHTECH

FLM Design

RENOVATE CLINIC
BUILDING 1090
LITTLE ROCK AFB, ARKANSAS

**ARCHITECTURAL DETAILS
AS-BUILT**

SHEET
REFERENCE
NUMBER:
A5.12
SHEET X OF XX