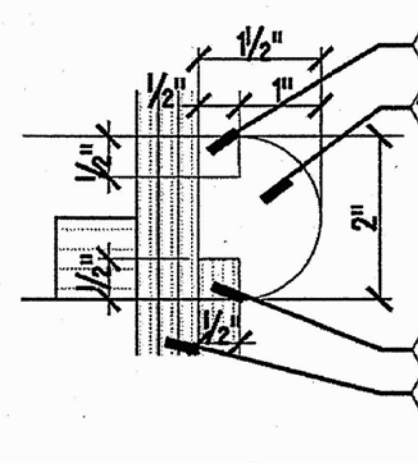
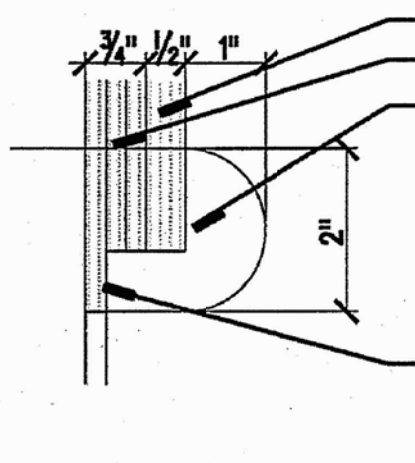


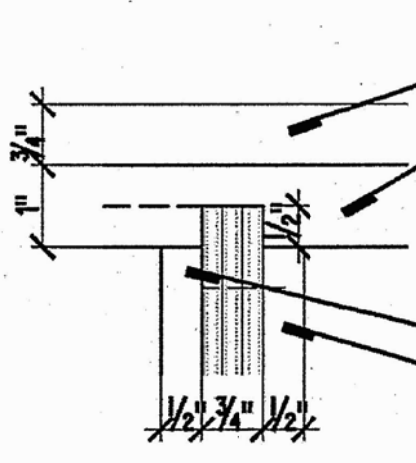
1 DETAIL SECTION
SCALE 6" = 1'-0"



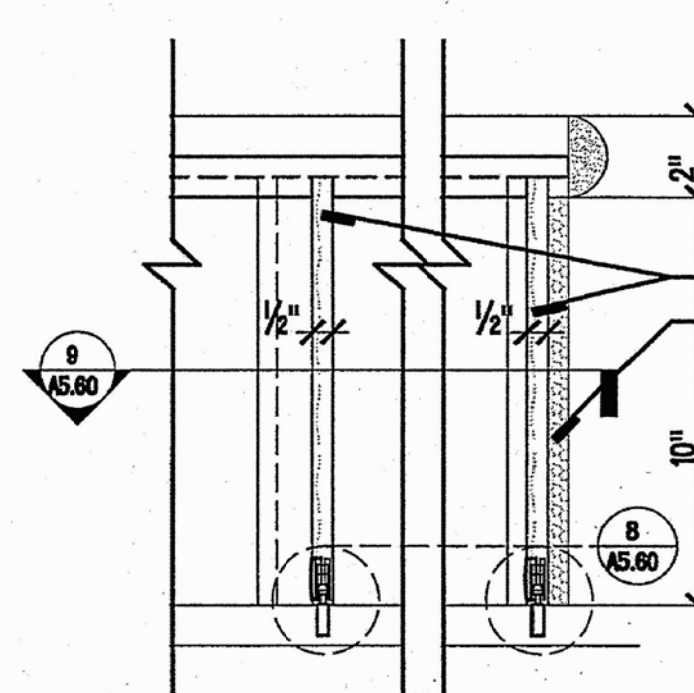
2 DETAIL SECTION
SCALE 6" = 1'-0"



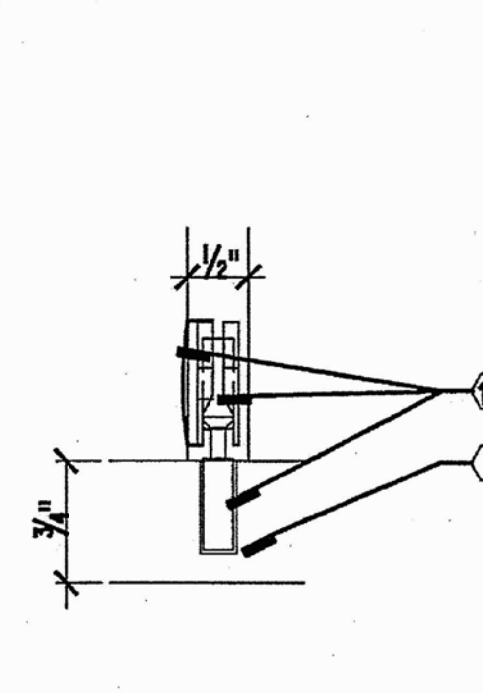
3 DETAIL SECTION
SCALE 6" = 1'-0"



4 DETAIL SECTION
SCALE 6" = 1'-0"



7 DETAIL SECTION
SCALE 6" = 1'-0"



8 DETAIL SECTION
SCALE 1/8" = 1'-0"

- GENERAL NOTES**
1. ALL PLYWOOD FRAMING TO BE FIRE TREATED
 2. ALL PLYWOOD FRAMING TO BE SHOP FABRICATED
 3. REVEAL CONDITIONS IN FINISHED PANELS WILL HAVE FINISHED SUBSTRATE, PAINTED BLACK, TYP. REFER TO MILLWORK ELEVATIONS FOR REVEAL LOCATIONS
 4. 1" CUT PLYWOOD STUD SPACING TO BE NOT GREATER THAN 1'-0" IN PLAN
 5. ALL STAIN COLOR TO BE APPROVED BY ARCHITECT BEFORE FABRICATION
 6. ALL EXPOSED HARDWOOD TO BE STAINED WD-1, SEE FINISH LEGEND A4.10.

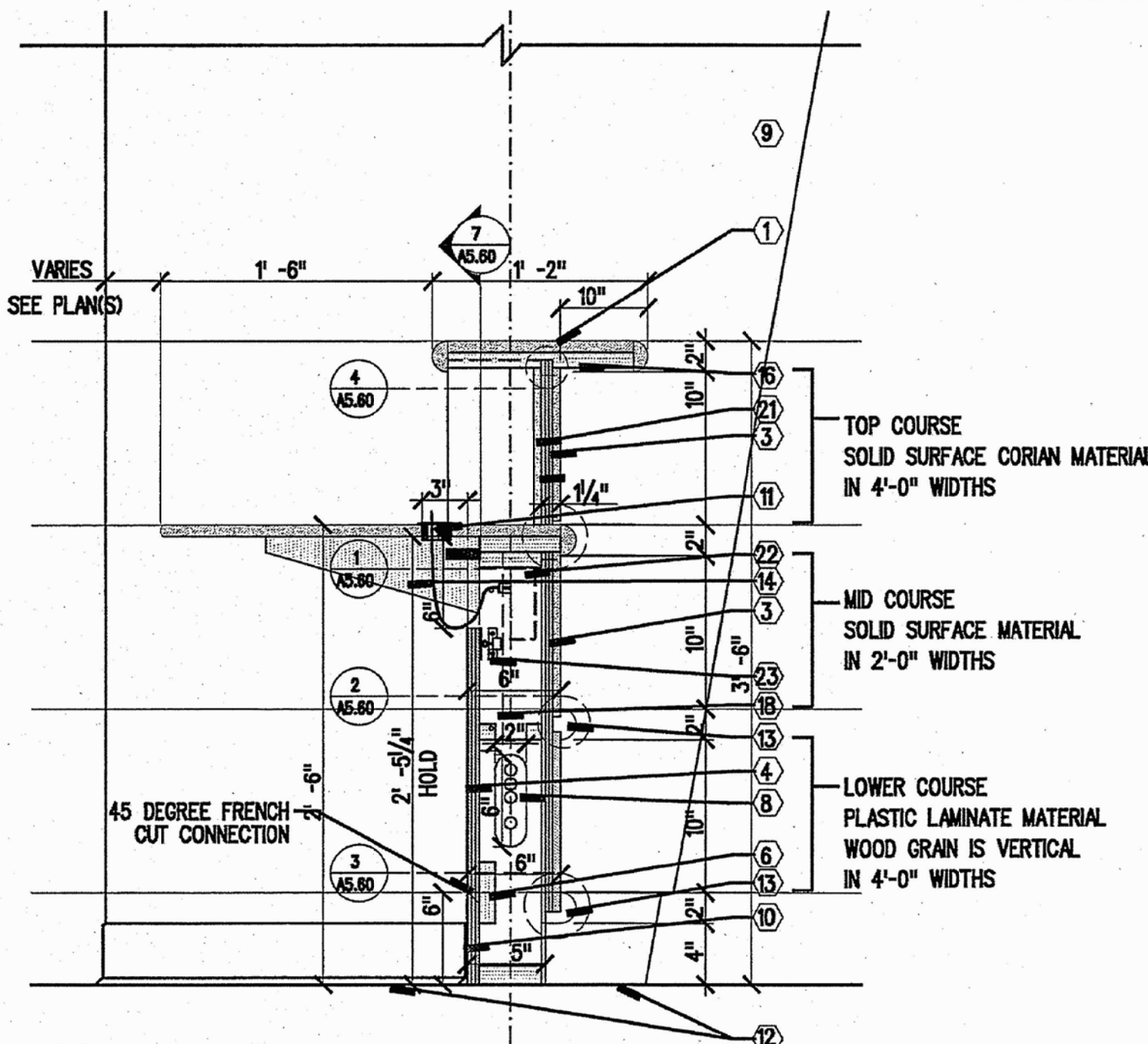
- KEYED NOTES**
1. 3/4" QUARTZ PRODUCT WORKSURFACE
 2. 1/2" SOLID SURFACE PANEL, MASTIC APPLIED
 3. 3 LAYERS OF 1/2" PLYWOOD LAMINATED TOGETHER TO FORM CURVATURE
 4. 3 LAYERS OF 1/2" PLYWOOD LAMINATED TOGETHER TO FORM CURVATURE - FINISHED WITH MALAMINE. SECTIONS TO BE REMOVEABLE UNDER WORKSURFACE
 5. PLASTIC LAMINATE PANEL
 6. 1" CUT PLYWOOD STUDS WITH 1" INTERMEDIATE CUT PLYWOOD FRAMING PLYWOOD STUD SPACING NOT TO EXCEED 1'-0" IN PLAN
 7. BLOCKING
 8. WIRE / CONDUIT MANAGEMENT CUT-OUT
 9. WALL COVERING ON GYPSUM ASSEMBLY BEYOND
 10. BASE AS SCHEDULED
 11. 2" DIA. GROMMET W/ CAPS, WHERE SHOWN IN PLAN
 12. FINISHED FLOOR MATERIAL
 13. QUARTZ MATERIAL ACCENT BAND, EPOXIED DIRECTLY TO SUBSTRATE
 14. METAL SUPPORT BRACKET ANCHORED VERTICALLY TO STEEL STUD FRAMING MEMBER AT 3'-0" O.C. REFER TO SPEC SECTION 06400 FOR TYPE AND MANUFACTURER.
 15. NOT USED
 16. PLYWOOD SUBSTRATE
 17. ELECTRICAL BOX, SEE ELECTRICAL PLAN
 18. CAM AND BOLT CONNECTOR WITH PLASTIC TRIM CAP. BOLT END OF CONNECTOR EPOXIED INTO QUARTZ WORKSURFACE
 19. 1/2" FINISHED HARDWOOD SUPPORT, TYP AT UPPER WORKSURFACE SUPPORTS
 20. TACK SURFACE, SEE SPECIFICATIONS
 21. JUNCTION BOX(S) TO POWER AND DATA
 22. METAL ROLLER CATCH, SIM TO McMASTER CARR MODEL # 1790A17, DULL CHROME FINISH
 23. 30" HIGH COUNTERS SHALL OVERHANG 10" WHERE THERE IS NOT A 42" HIGH TRANSACTION COUNTER IMMEDIATELY ADJACENT.

ABBREVIATED PATTERN KEY

[Pattern]	QUARTZ PRODUCT
[Pattern]	HARDWOOD
[Pattern]	SOLID SURFACE
[Pattern]	GYPSUM BOARD

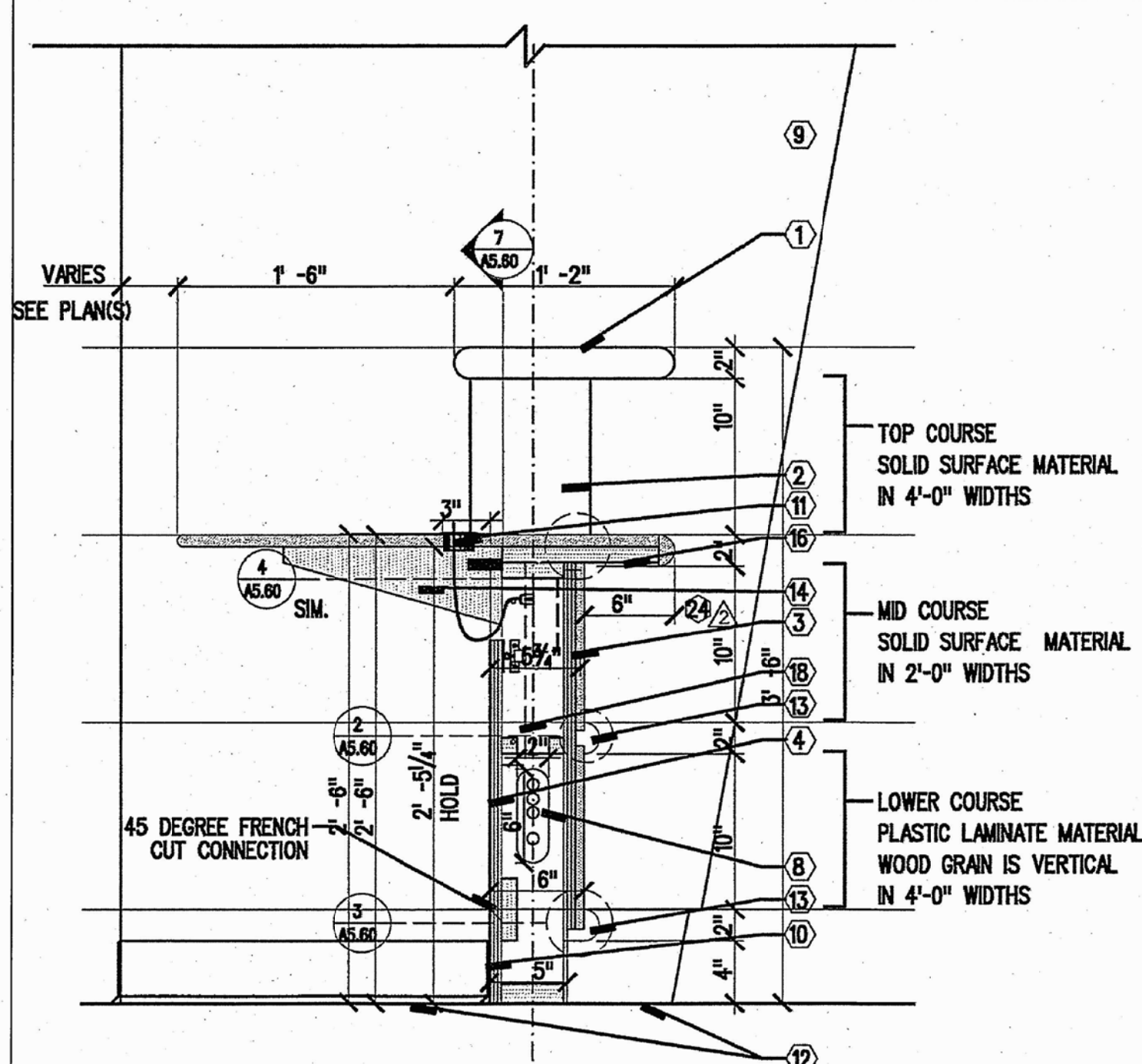


LITTLE ROCK A.F.B.
ARKANSAS



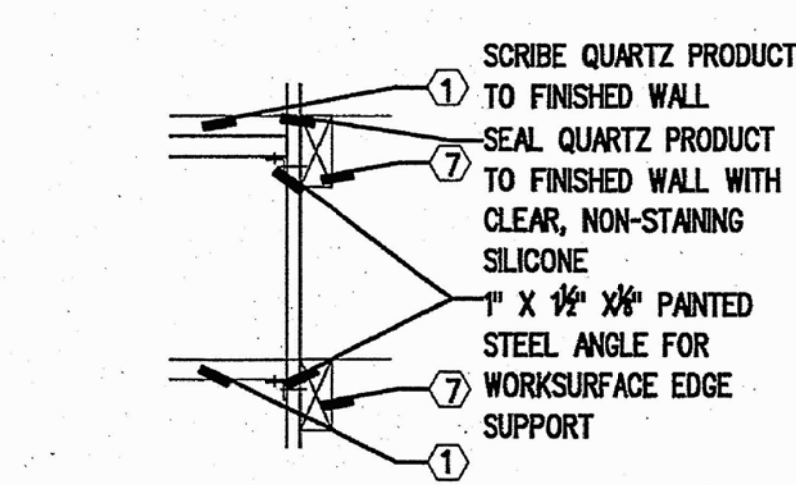
1. COORDINATE SPACING OF WORKSURFACE SUPPORTS WITH EQUIPMENT PLANS)
2. SHOW LOCATION OF ALL SUPPORTS IN MILLWORK SHOP DRAWINGS
3. SHOW LOCATION IN SHOP DRAWINGS OF ALL QUARTZ MATERIAL WORKSURFACE SEAMS
4. REFER TO A6.00 FOR PLAN LOCATION OF KNEE WALLS.

5 SECTION AT RECEPTION DESK
SCALE 1 1/2" = 1'-0"

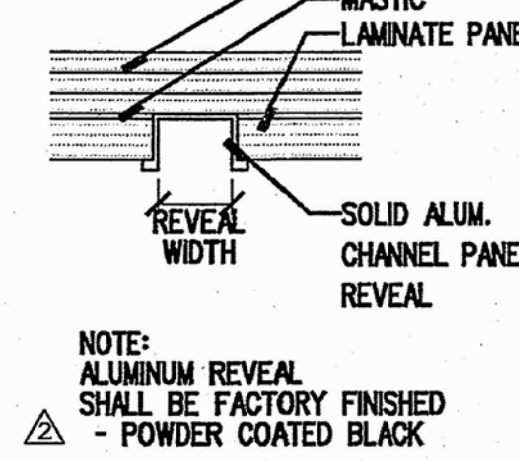


1. COORDINATE SPACING OF WORKSURFACE SUPPORTS WITH EQUIPMENT PLANS)
2. SHOW LOCATION OF ALL SUPPORTS IN MILLWORK SHOP DRAWINGS
3. SHOW LOCATION IN SHOP DRAWINGS OF ALL QUARTZ MATERIAL WORKSURFACE SEAMS
4. REFER TO A6.00 FOR PLAN LOCATION OF KNEE WALLS.

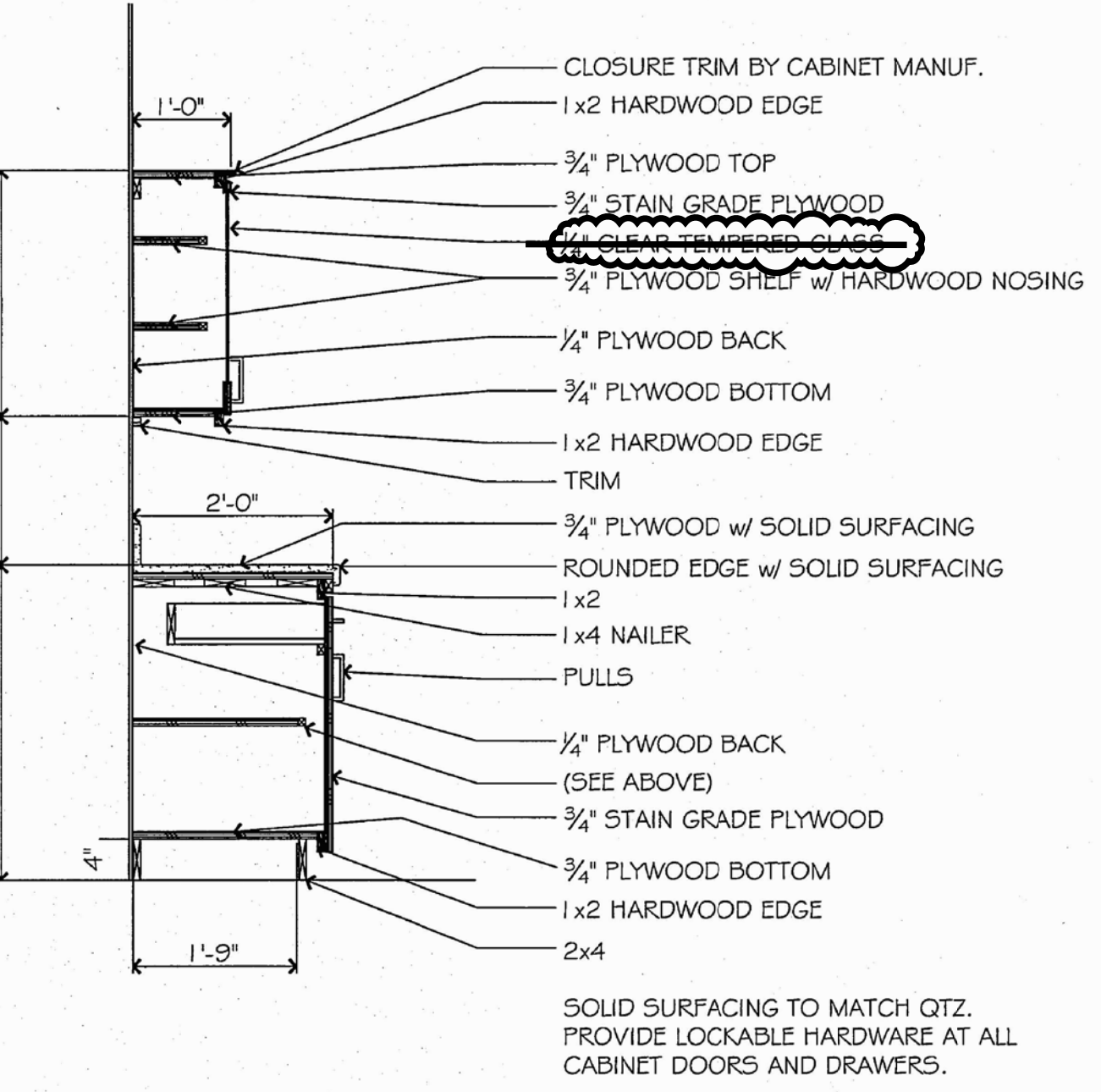
6 SECTION AT ACCESSIBLE WORKSURFACE
SCALE 1 1/2" = 1'-0"



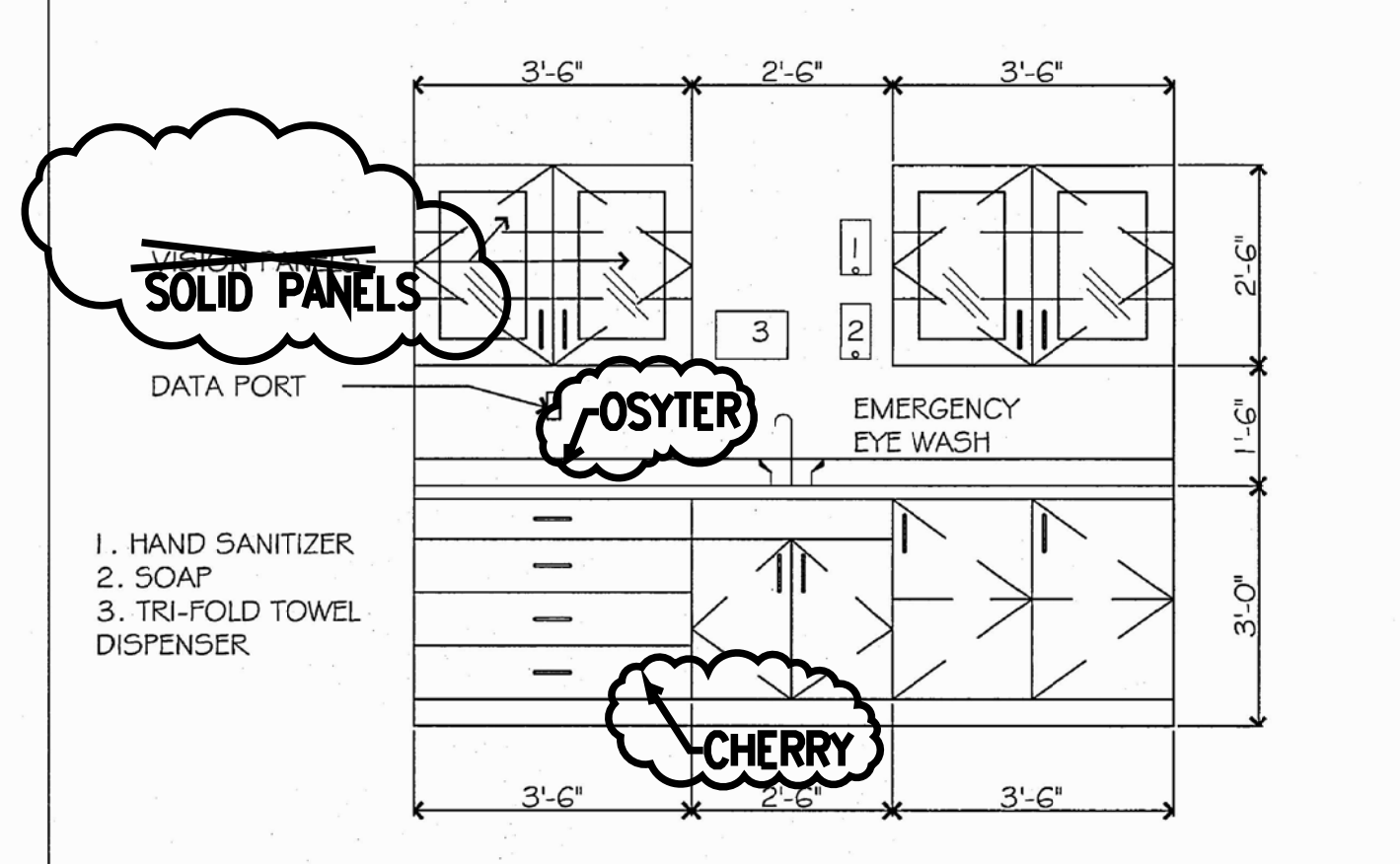
10 TYP. DETAIL SECTION AT WALLS
SCALE 1 1/2" = 1'-0"



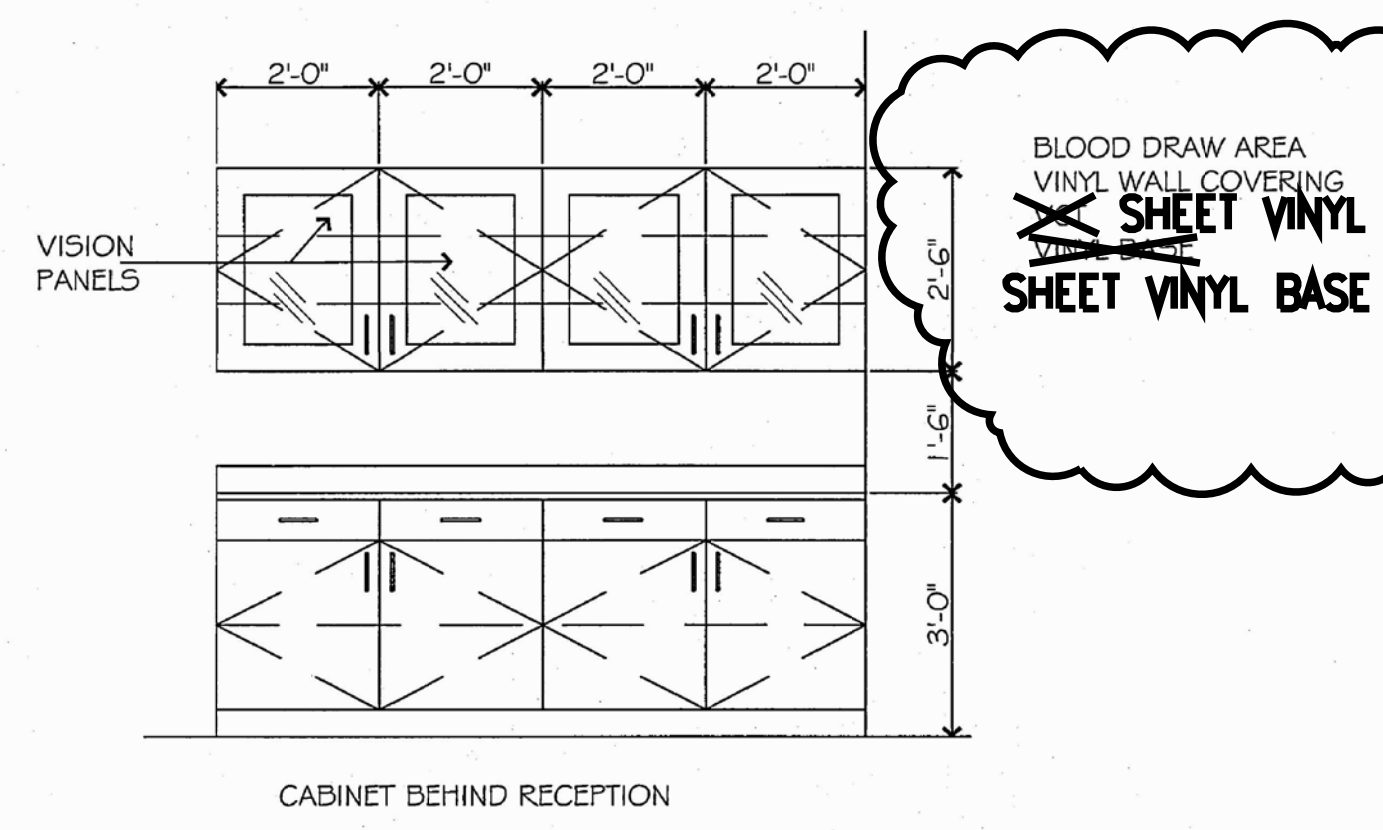
10A REVEAL DETAIL
SCALE 1/8" = 1'-0"



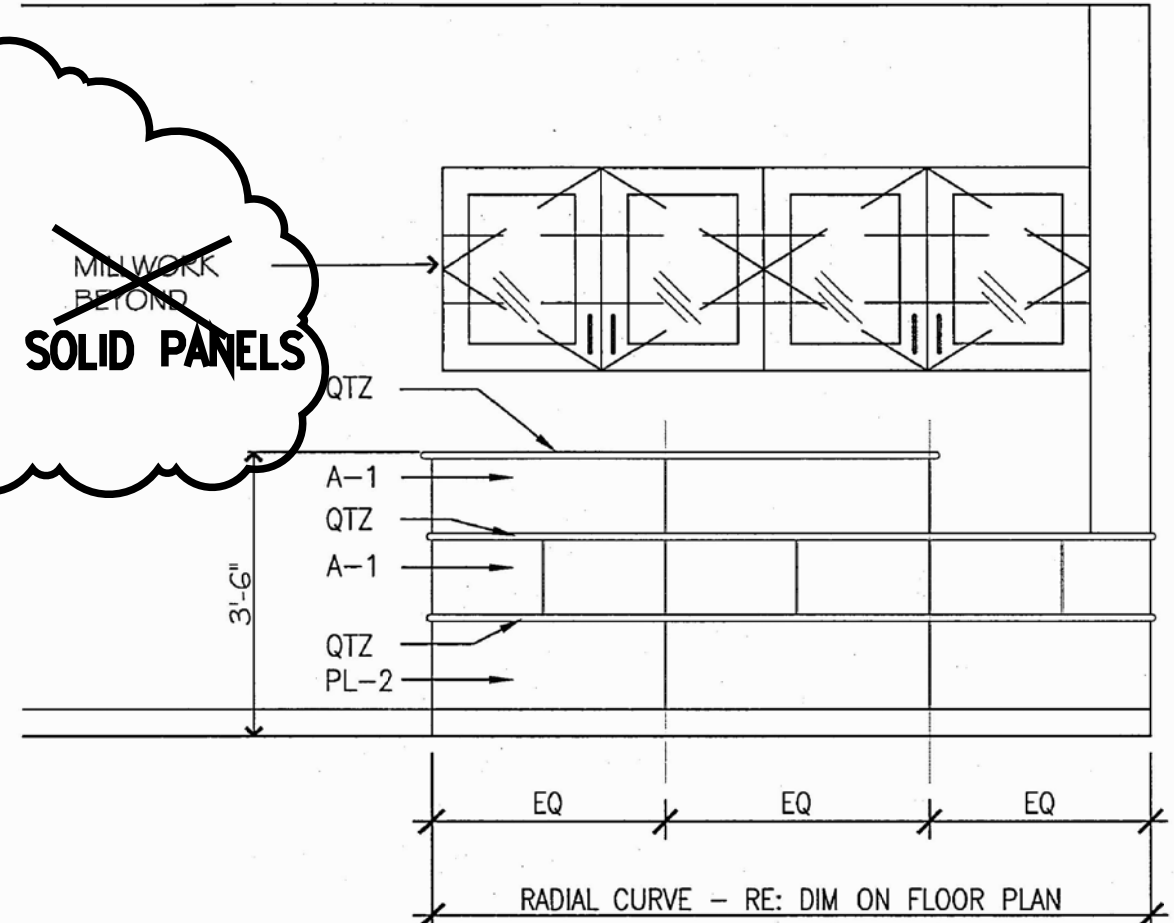
11 TYPICAL CABINET SECTION
SCALE: 3/4" = 1'-0"



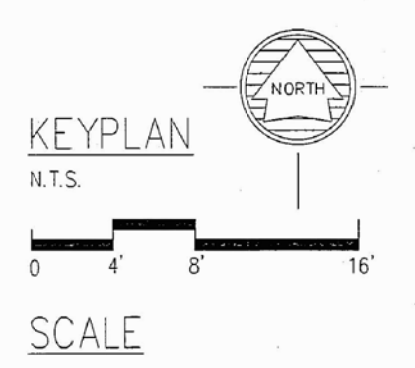
12 BLOOD DRAW CABINET ELEVATION
1/2" = 1'-0"



13 COUNTER AT RECEPTION
1/2" = 1'-0"



14 ELEVATION @ RECEPTION
1/2" = 1'-0"



KEY PLAN
N.T.S.
SCALE

AS BUILTS

PROJECT TITLE	REPAIR MEDICAL CENTER PH 3 LITTLE ROCK AFB, ARKANSAS	SHEET TITLE	ADDENDUM ELEVATIONS AND SECTIONS
DRAWN BY	WW	LEAD DESIGNER	WW
TECH REVIEWER	WW	PROJECT NUMBER	NKAK 06-8001
DESIGNED BY	WW	SHEET	AD.11
DATE	1-12-07	SCALE	AS SHOWN
No.		Revision/Issue	
Date		BY	
APP'D			