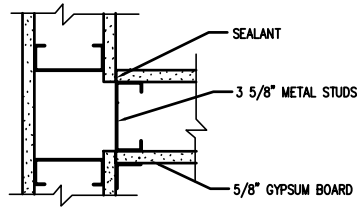
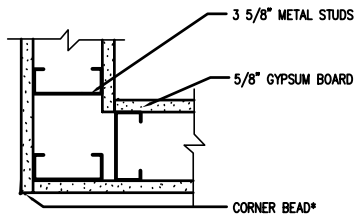


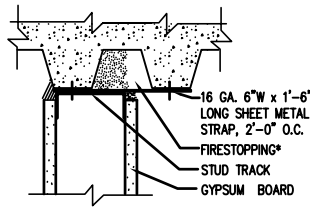
1 PARTITION END 3'-1'-0"



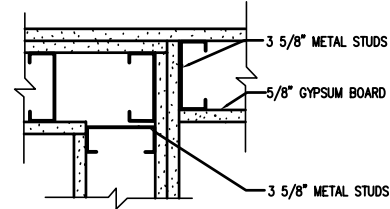
2 PARTITION INTERSECTION 3'-1'-0"



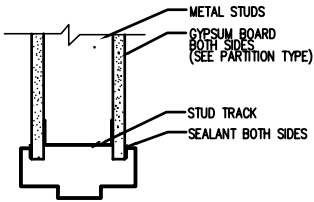
3 PARTITION CORNER FRAMING 3'-1'-0"



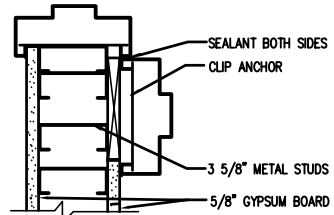
4 PARTITION TERMINATION AT METAL DECK-TRANSVERSE TO FLUTES 3'-1'-0"
* OR SOUND ATTENUATION MATERIAL AT NON-RATED PARTITIONS



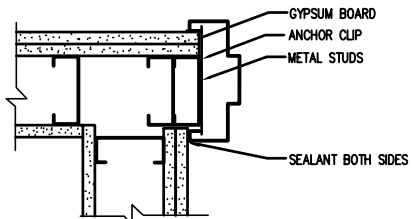
5 PARTITION INTERSECTION 3'-1'-0"



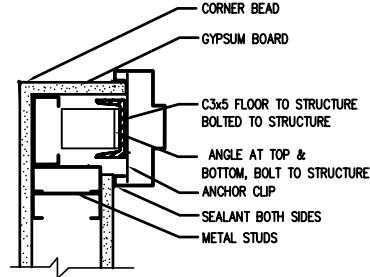
6 HEAD AT TYPICAL PARTITION 3'-1'-0"



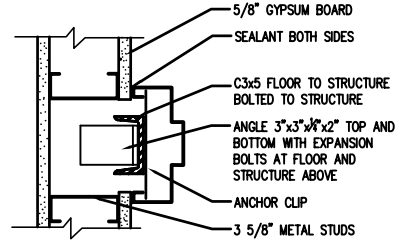
7 ADJOINING DOOR JAMBS 3'-1'-0"



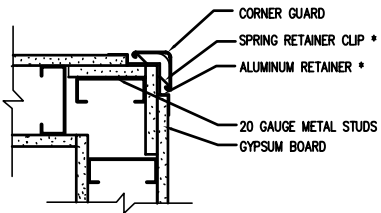
8 JAMB AT PARTITION INTERSECTION 3'-1'-0"



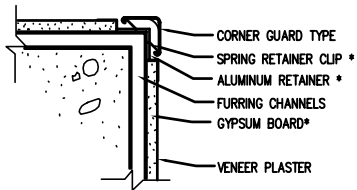
9 JAMB AT END OF PARTITION 3'-1'-0"



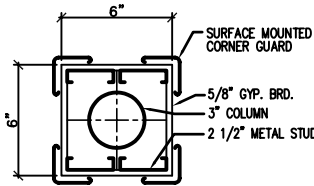
10 JAMB DETAIL AT NON-RATED PART. 3'-1'-0"



11 CORNER GUARD IN TYPICAL PARTITION 3'-1'-0"
A6012
* EXISTING SPRING CLIP AND ALUMINUM RETAINER MAY BE REUSED IN PLACE IF THE CORNER GUARD FACE PIECE CAN BE REPLACED INDEPENDENTLY.



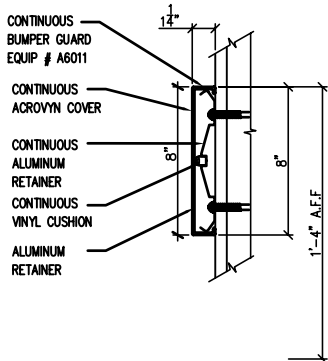
12 CORNER GUARD AT FURRED CORNER 3'-1'-0"
A6012
* EXISTING SPRING CLIP AND ALUMINUM RETAINER MAY BE REUSED IN PLACE IF THE CORNER GUARD FACE PIECE CAN BE REPLACED INDEPENDENTLY.



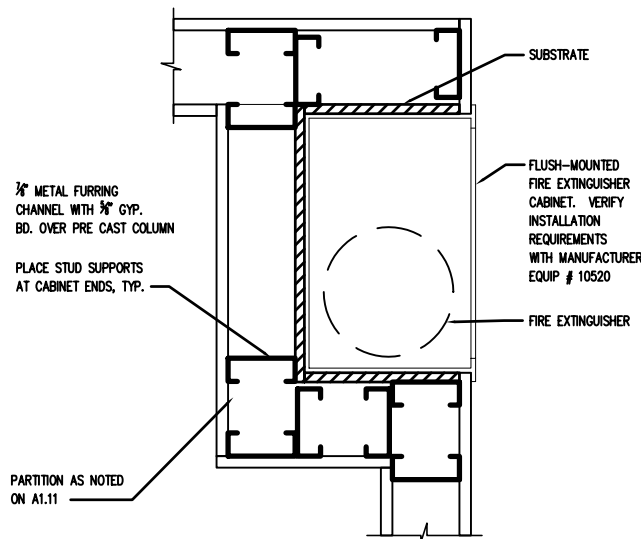
13 EXISTING COLUMN 3'-1'-0"

14 NOT IN USE N.T.S.

15 NOT IN USE N.T.S.

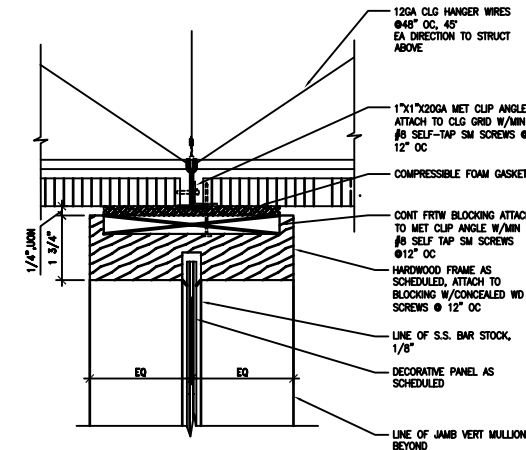


16 BUMPER GUARD SECTION 3'-1'-0"
A6011

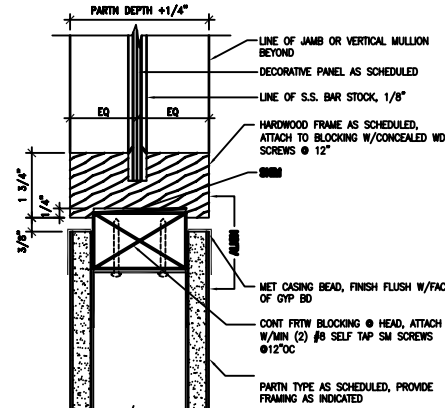


17 FIRE EXTINGUISHER CABINET N.T.S.

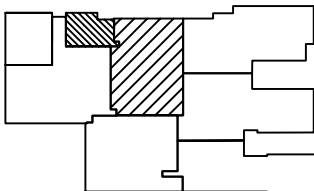
* EXISTING FIRE EXTINGUISHER CABINET MAY REMAIN IF IN GOOD CONDITION AND NOT DAMAGED DURING CONSTRUCTION. FINISH METAL TO MATCH NEW DOOR FRAME FINISH.



18 HEAD DETAIL N.T.S.



19 SILL DETAIL N.T.S.



LITTLE ROCK A.F.B.
ARKANSAS

PROJECT TITLE
REPAIR MEDICAL CENTER PH 3
LITTLE ROCK AFB, ARKANSAS

SHEET TITLE
ARCHITECTURAL DETAILS

DRAWN BY RJR	LEAD DESIGNER AM
TECH REVIEWER AM	PROJECT NUMBER NKAK 06-8001
DESIGNED BY AM	SHEET
DATE 8-11-06	A5.11
SCALE AS NOTED	15 OF 37