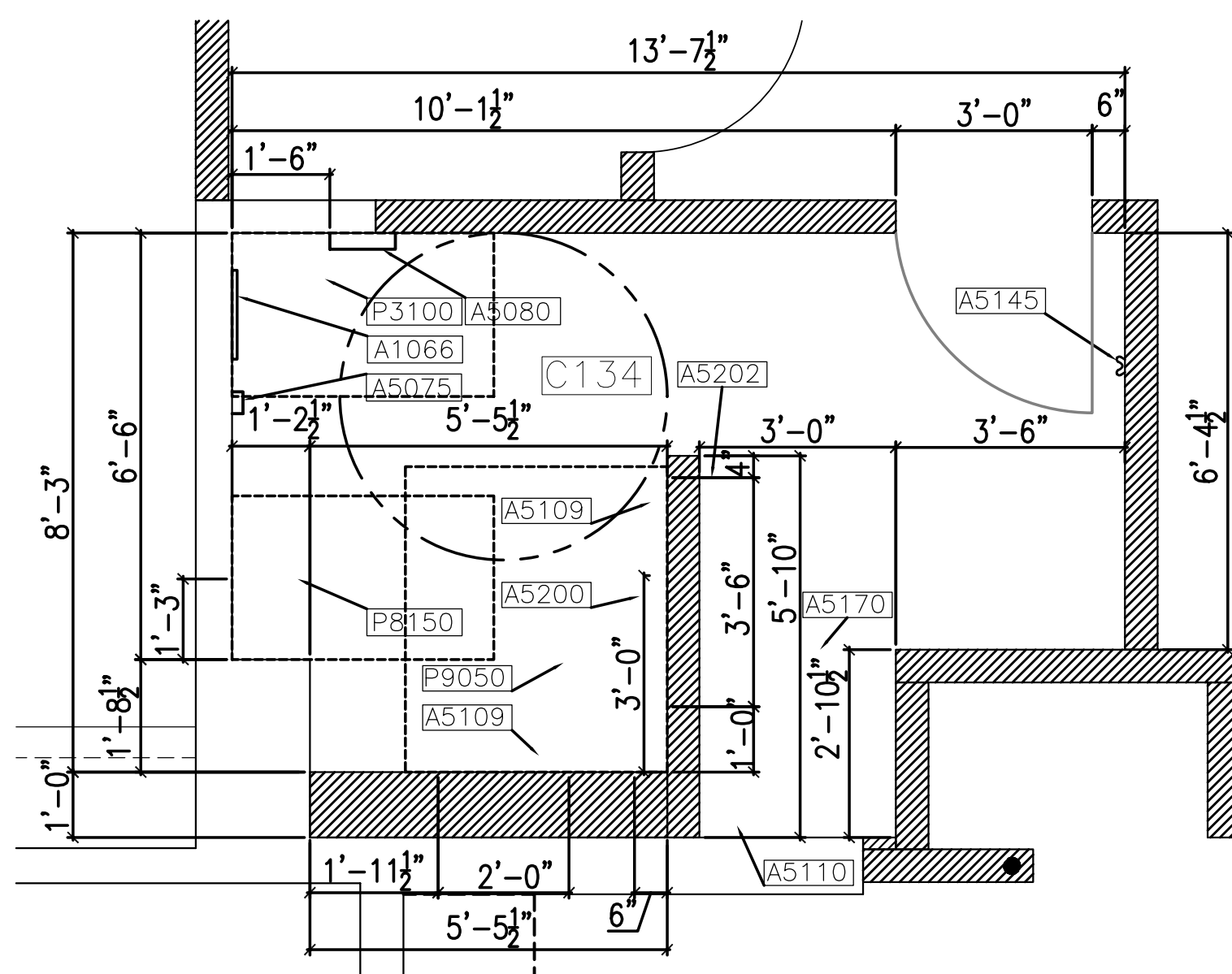


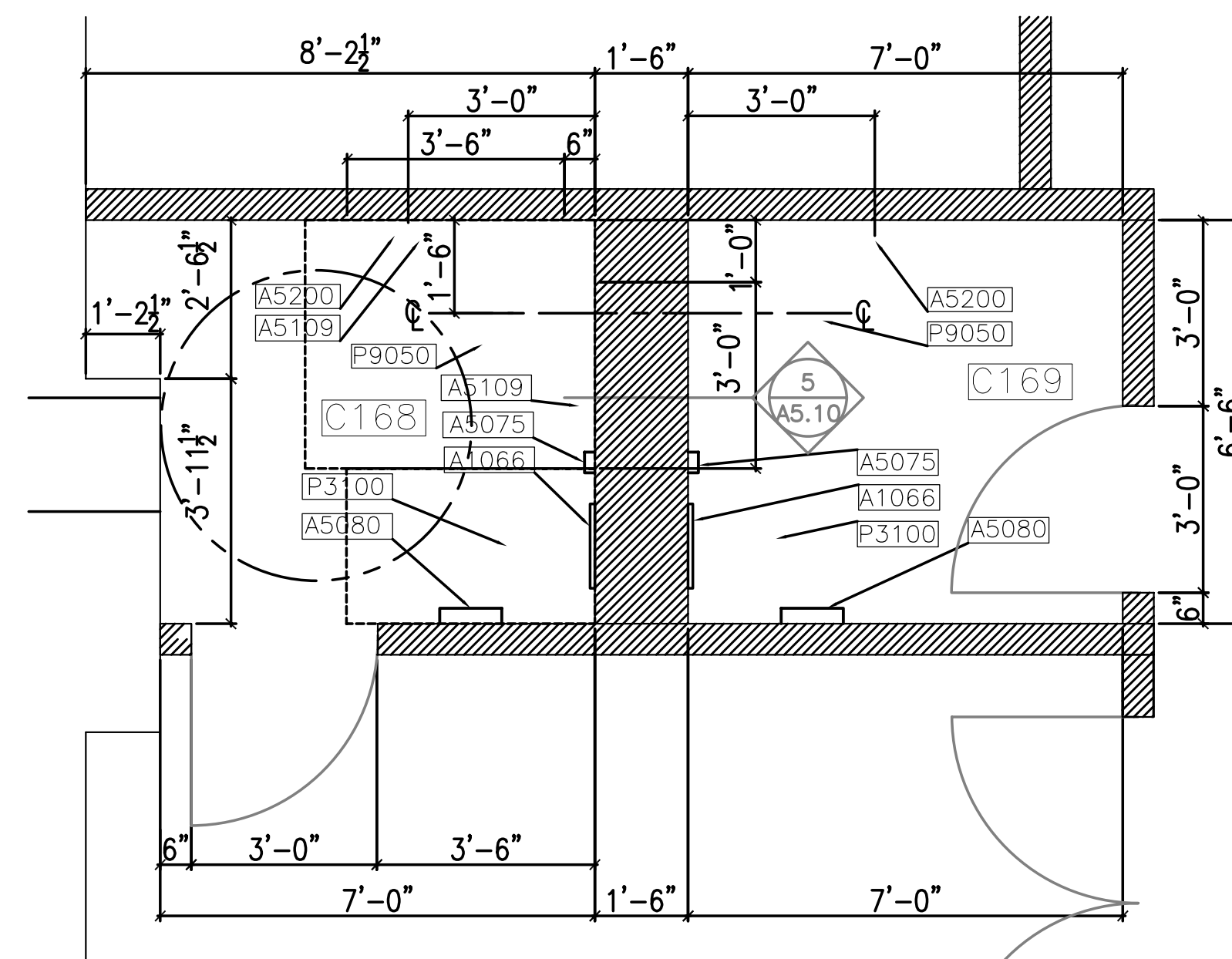
1 TOILET C148 & C147

SCALE: 1/2" = 1'-0"



2 TOILET C134

SCALE: 1/2" = 1'-0"



3 TOILET C168 & C169

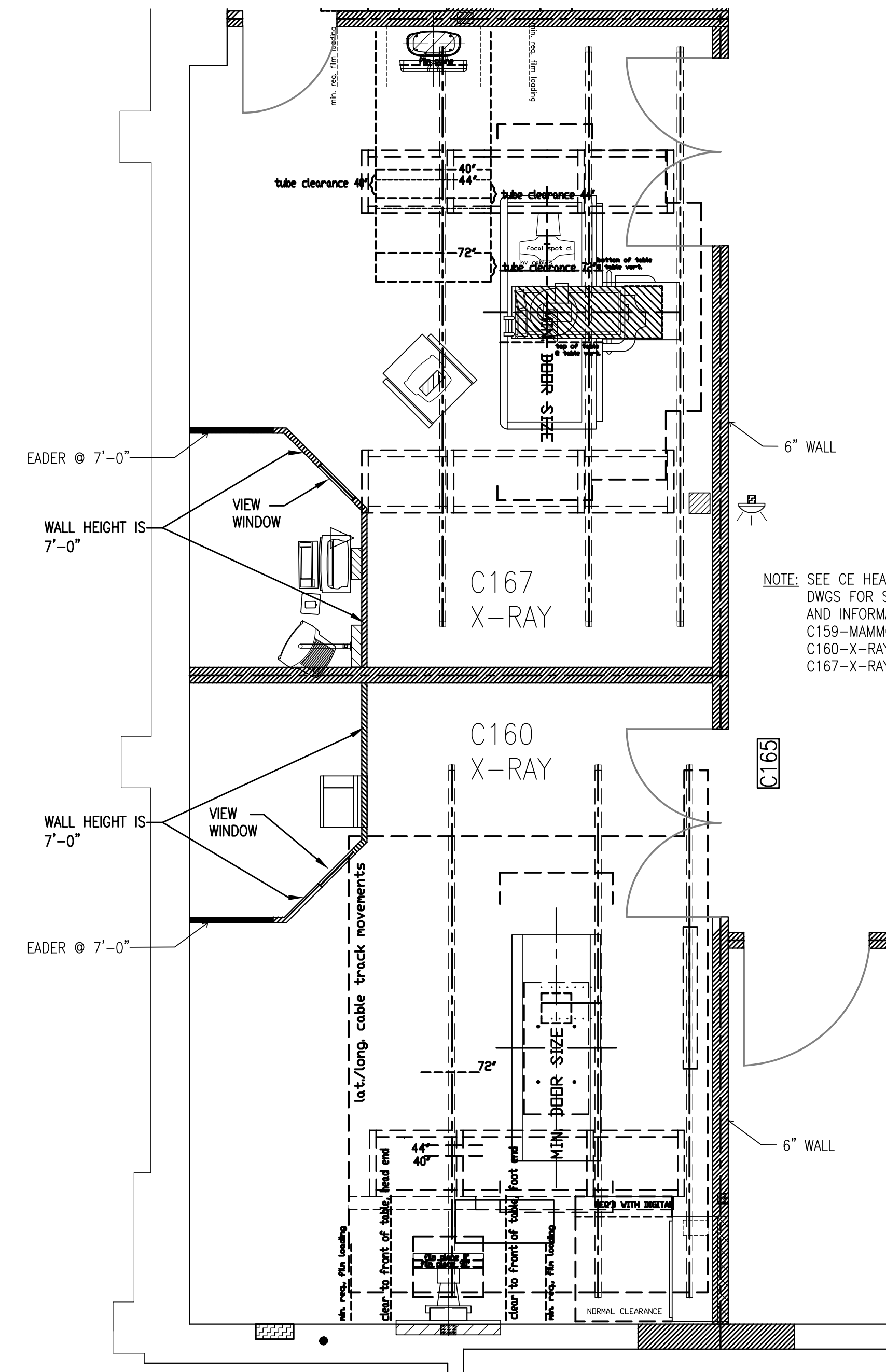
SCALE: 1/2" = 1'-0"

ACCESSORIES LEGEND

A1066	MIRROR
A5075	SOAP DISPENSER
A5080	PAPER TOWEL DISPENSER
A5109	GRAB BAR
A5145	DOUBLE ROBE HOOK
A5110	SHOWER GRAB BAR
A5170	SHOWER ROD CURTAIN
A5200	TOILET TISSUE DISPENSER
A5202	TOWEL BAR
P3100	LAVATORY
P8150	URINAL
P9050	TOILET

KEYED NOTE

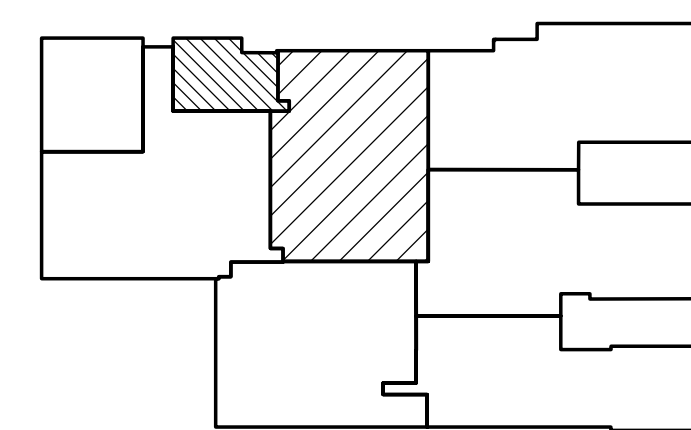
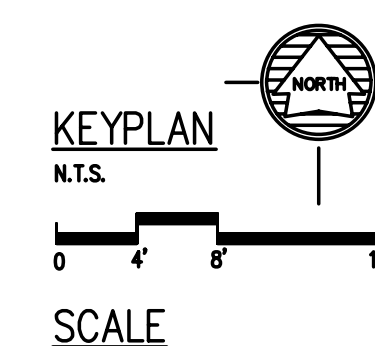
- ① SPECIMEN PASS-THRU CABINET



4 DIGITAL XRAY C160 & C167

SCALE: 1/2" = 1'-0"

*X-RAY EQUIPMENT TO BE INSTALLED BY GE.



AS BUILTS



LITTLE ROCK A.F.B.
ARKANSAS

No.	Revision/Issue	Date	BY	APP'D

PROJECT TITLE
REPAIR MEDICAL CENTER PH 3
LITTLE ROCK AFB, ARKANSAS

SHEET TITLE
ENLARGED PLANS

PROJECT TITLE	REPAIR MEDICAL CENTER PH 3 LITTLE ROCK AFB, ARKANSAS
DRAWN BY	RJR
TECH REVIEWER	AM
DESIGNED BY	AM
DATE	8-11-06
SCALE	1/2"=1'-0"
LEAD DESIGNER	AM
PROJECT NUMBER	NKAK 06-8001
SHEET	A3.10
10 OF 37	