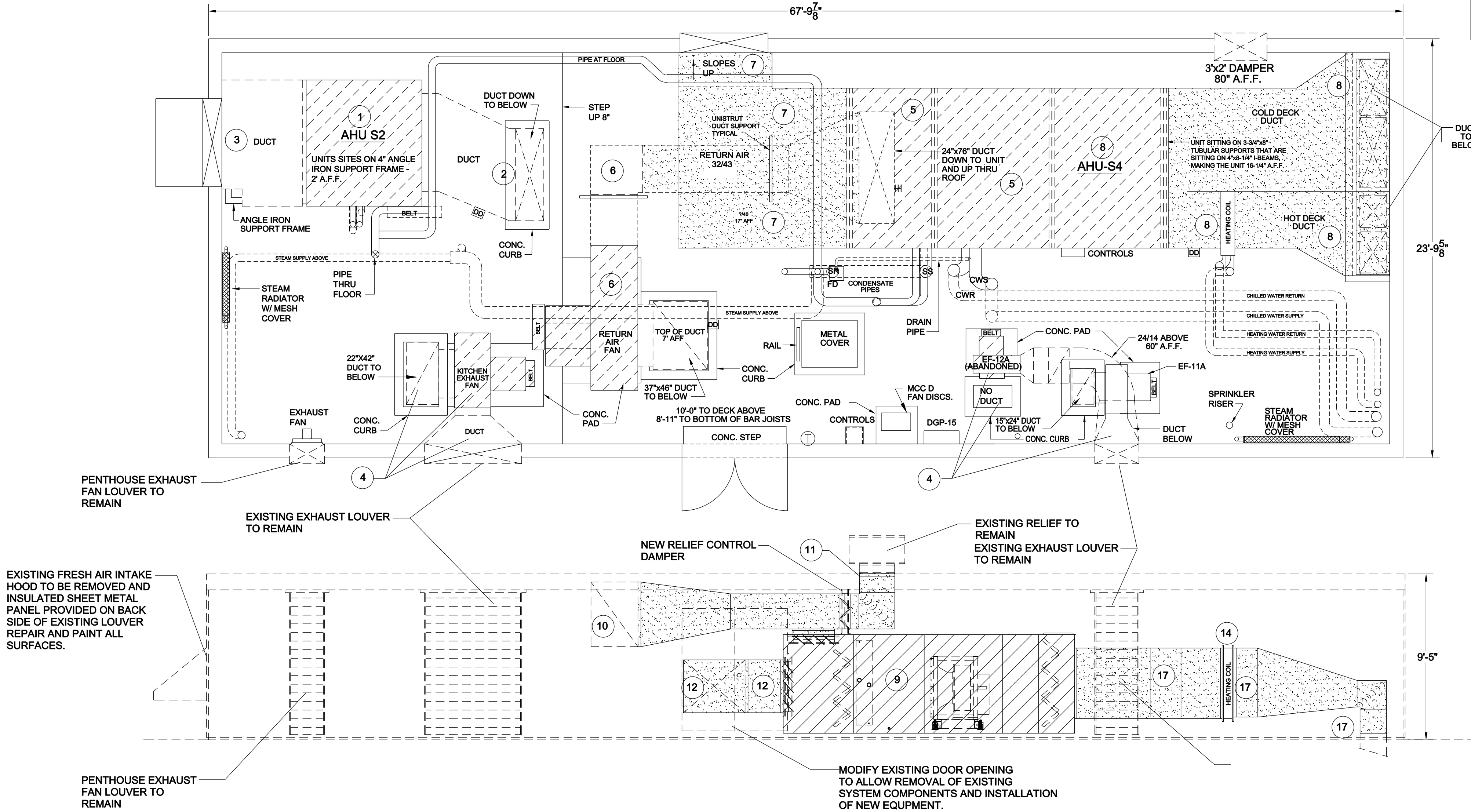




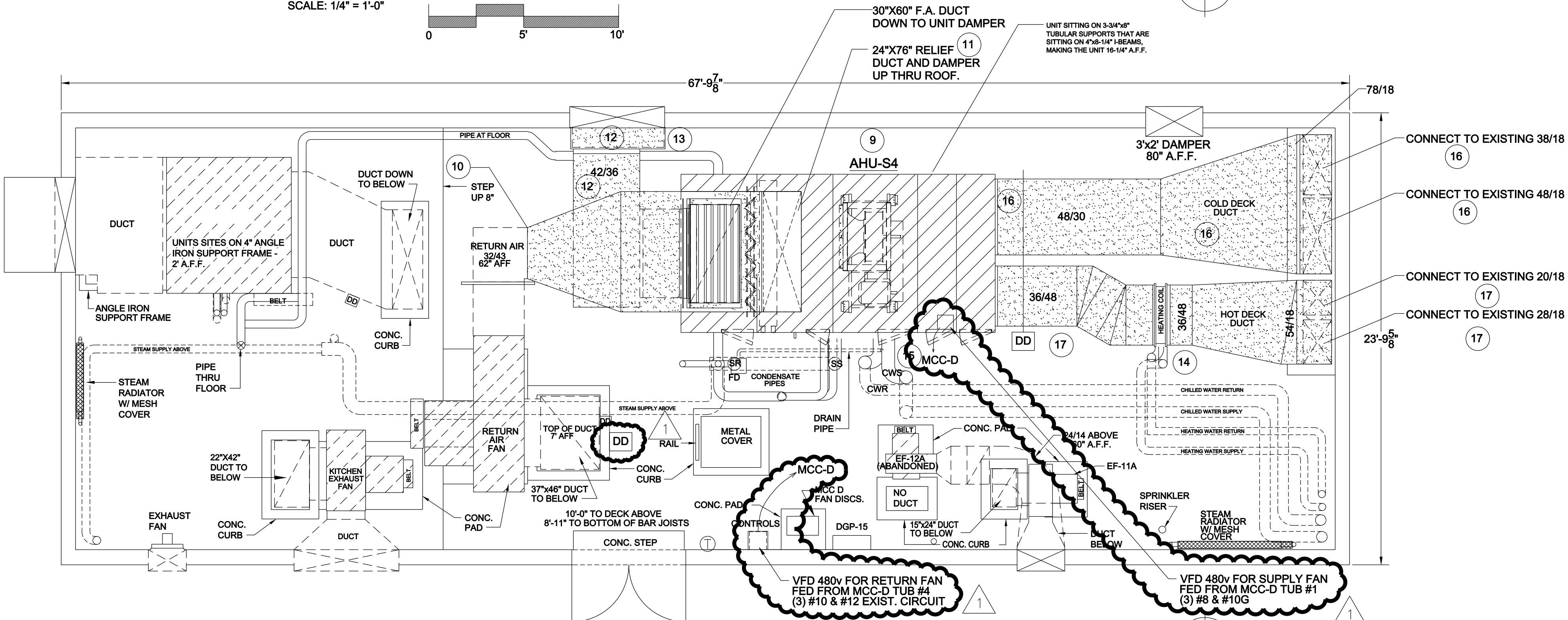
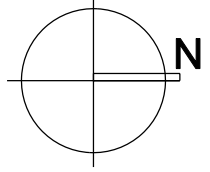
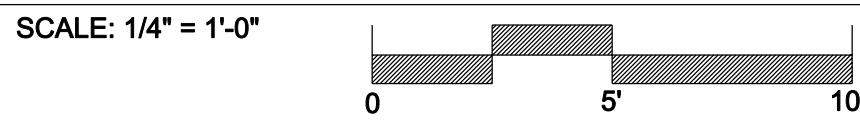
LITTLE ROCK A.F.B.  
ARKANSAS

**MTE** MIKE TRUSTY  
ENGINEERING  
PHONE: (501)224-9013  
FAX: (501)421-0151  
miketrusty@msn.com

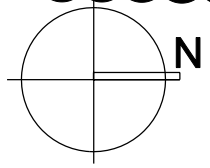
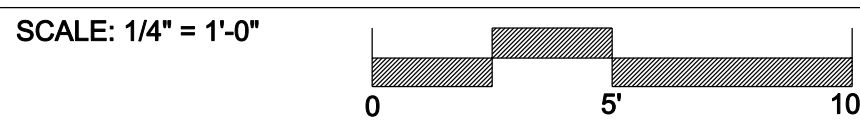
LEGEND	
DD	DUCT DETECTOR LOCATION
T	THERMOSTAT LOCATION
HH	DIGITAL CONTROLLER



EXISTING PENTHOUSE #3(S-4) MECHANICAL PLAN & ELEV.



REVISED PENTHOUSE #3(S-4) MECHANICAL PLAN & ELEV.



KEYED NOTES:

- EXISTING ABANDONED AIR HANDLING UNIT ALONG WITH ALL ASSOCIATED DUCT, PIPING, CONTROLS, SUPPORTS, ETC. SHALL REMAIN. CONTROLS SHALL BE DEACTIVATED.
- EXISTING ABANDONED IN PLACE SUPPLY DUCT TO REMAIN IN PLACE. SYSTEM IS PART OF A KITCHEN VENTILATION SYSTEM THAT WAS ABANDONED IN PLACE.
- EXISTING ABANDONED IN PLACE FRESH AIR INTAKE AND DUCT TO REMAIN AS IS. VERIFY THAT DAMPERS ARE CLOSED AND LOCKED IN PLACE.
- EXISTING ABANDONED IN PLACE EXHAUST FAN AND ALL ASSOCIATED DUCT, ELECTRICAL, CONTROLS, ETC. SHALL REMAIN. COORDINATE INSTALLATION OF NEW EQUIPMENT.
- COORDINATE REMOVAL OF EXISTING S-4 AIR HANDLING UNIT AND ASSOCIATED DUCT, CONTROLS, PIPING, ETC. COORDINATE SCHEDULE WITH GENERAL CONTRACTOR. NOTE THAT A PORTION OF THE EXISTING WALL AND DOORS MUST BE REMOVED TO ALLOW REMOVAL AND INSTALLATION OF EQUIPMENT.
- NOTE THAT THE EXISTING RETURN FAN AND SECTIONS OF DUCT INDICATED SHALL REMAIN AND BE PART OF THE REVISED MECHANICAL SYSTEMS RELATED TO THE UNIT REPLACEMENT.
- REMOVE EXISTING FRESH AIR INTAKE DUCT. EXISTING INTAKE LOUVER SHALL REMAIN AND BE USED AS PART OF THE NEW REVISED MECHANICAL SYSTEM.
- REMOVE THE EXISTING COOLING AND HOT DECK SECTIONS AND DUCT EXTENDING TO FLOOR PENETRATIONS. VERIFY FIRE STOP AT FLOOR PENETRATIONS.
- INSTALL NEW S-4 UNIT IN PLACE OF EXISTING. PROVIDE STRUCTURAL SUPPORT FRAME TO SUPPORT UNIT ABOVE FLOOR TO ALLOW FOR DRAIN EXTENSIONS. SEE ELEVATIONS THIS SHEET.
- CONNECT NEW EXTERNALLY INSULATED RETURN DUCT TO EXISTING DISCHARGE DUCT FROM REUSED RETURN FAN AND EXTEND TO NEW UNIT AND RELIEF DUCT.
- TRANSITION FROM UNIT RELIEF AIR CONNECTION UP TO EXISTING ROOF PENETRATION AND CONNECT.
- CONNECT TO NEW UNIT FRESH AIR INLET AND EXTEND EXTERNALLY INSULATED FRESH AIR DUCT TO NEW INSULATED PLENUM AT EXISTING LOUVER.
- PROVIDE NEW FULL DEPTH EXTERNALLY INSULATED FRESH AIR PLENUM BEHIND EXISTING INTAKE LOUVER.
- MODIFY AND EXTEND EXISTING PRE-HEATING COIL PIPING AND CONNECT TO NEW COIL. PROVIDE NEW ISOLATION VALVES, GAGES, TRAPS, CONTROL VALVES, ETC. AT CONNECTION TO UNIT.
- MODIFY AND EXTEND EXISTING CHILL WATER AND HEATING WATER PIPING AND CONNECT TO NEW COILS. PROVIDE NEW VALVES, GAGES, CONTROL VALVES, ETC. AT CONNECTION TO UNIT.
- TRANSITION NEW UNIT DUCT CONNECTION TO EXISTING COOLING DUCT PENETRATION OF FLOOR.
- TRANSITION HEATING COIL DUCT CONNECTION TO EXISTING HEATING DUCT PENETRATION OF FLOOR.

AS-BUILT

PROJECT TITLE REPAIR & RENOVATE MEDICAL CLINIC PH V LITTLE ROCK AIR FORCE BASE JACKSONVILLE, ARKANSAS CHANGE ORDER TO PHASE V - 100% SUBMITTAL		SHEET TITLE MECHANICAL S-4 DETAILS	
DRAWN BY GMT	LEAD DESIGNER GMT	PROJECT NUMBER NKAK#06-8006-5	SHEET M-401
TECH REVIEWER GMT	DATE DEC. 3, 2010	SCALE AS SHOWN	17 of 21