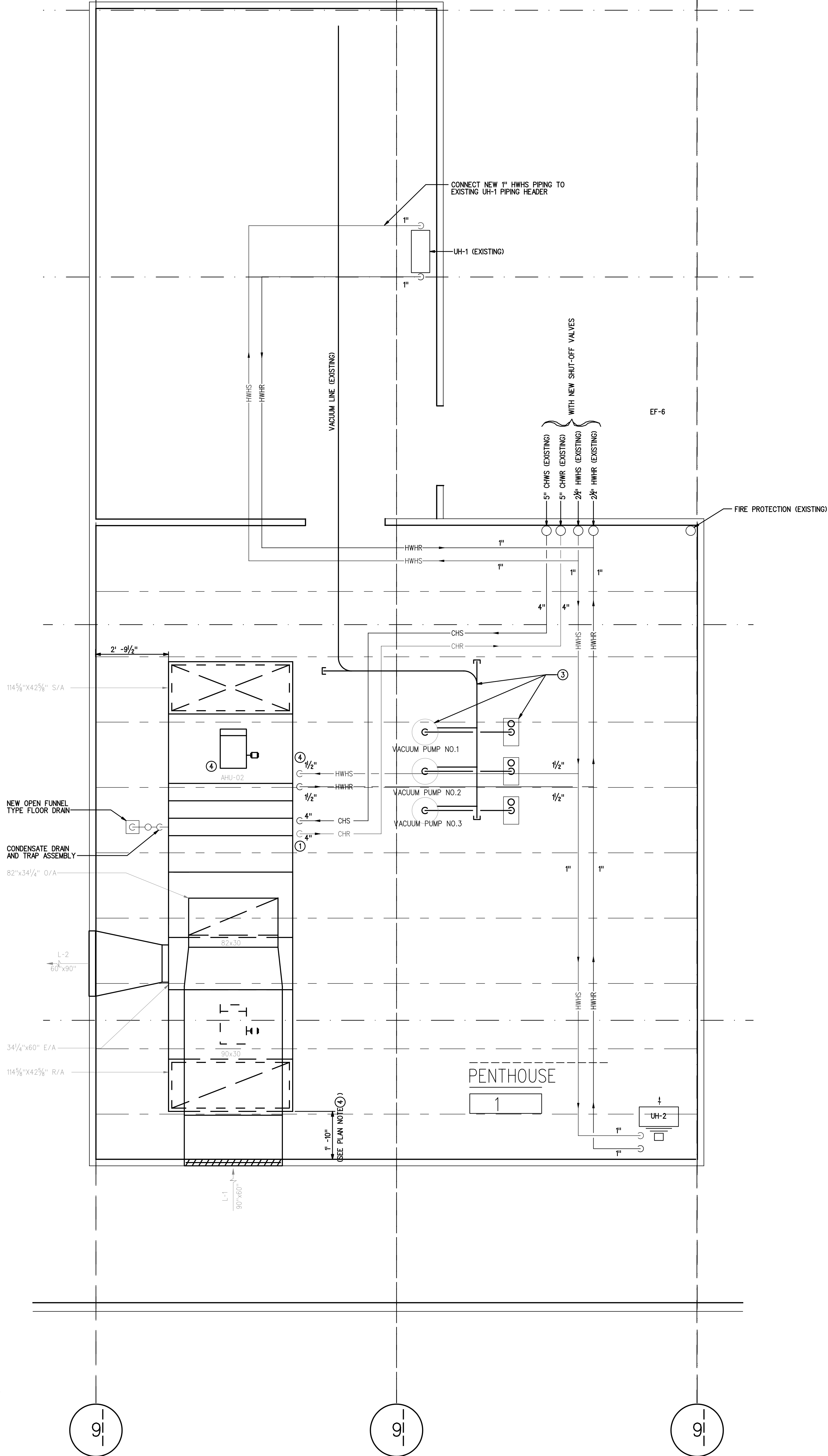


8/10/2018
8/10/2018
8/10/2018
8/10/2018

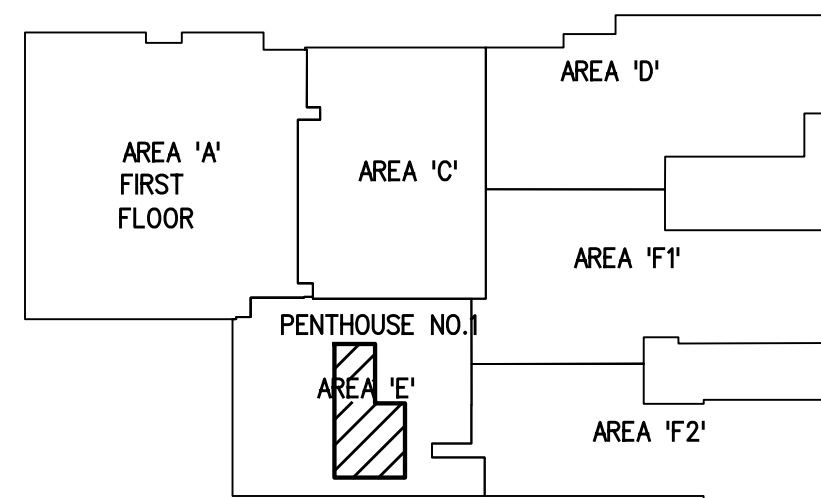
1 PENTHOUSE PLAN

SCALE: 1/4" = 1'-0"



PLAN NOTES.

- ① THERE ARE 2-CHILLED WATER COILS EACH WITH 2 1/2" ~ SUPPLY AND RETURN CONNECTION.
- ② THERE ARE 2-HOT WATER COILS. EACH WITH 1 1/2" ~ SUPPLY AND RETURN CONNECTIONS.
- ③ CONTRACTOR SHALL RELOCATE THE EXISTING (3) VACUUM RECEIVER TANKS AND PIPING ALONG WITH HEADER VTR CLOSE TO THE WALL ALONG COLUMN ①
- ④ THE CONTRACTOR SHALL ORDER THE AIR HANDLING UNIT ONLY AFTER CHECKING THE ROOF FRAMING PLAN IN THE FIELD TO MAKE SURE THAT THE SUPPLY AND RETURN AIR OPENINGS ARE NOT OBSTRUCTED BY THE ROOF JOISTS.



KEY PLAN

N.T.S.

SCALE

RENOVATE CLINIC
BUILDING 1090
LITTLE ROCK AFB, ARKANSAS
**PENTHOUSE
ENLARGED PLAN
AS-BUILT**

SHEET
REFERENCE
NUMBER:
M3.12
SHEET X OF XX

U.S. ARMY ENGINEERING AND SUPPORT CENTER
CORPS OF ENGINEERS
HUNTSVILLE, ALABAMA
E A R T H T E C H
2012 Huntsville, AL 35894-1144
FLM
FLM Design

DESIGNED BY: DATE: 08/04/2003
R.C.
DRAWN BY: PROJECT NO. 6503
C.S.
CHECKED BY: DRAWING CODE:
R.W.H.
REVIEWED BY: SOLICITATION NUMBER:

REVISIONS AS-BUILT
ISSUED FOR FINAL WORK PLAN
ISSUED FOR BID
DATE 8/07/2005
DATE 10/31/2003
DATE 10/17/2003
SYMBOL AMENDMENT DESCRIPTION

US Army Corps
of Engineers
Huntsville
Alabama