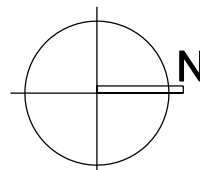
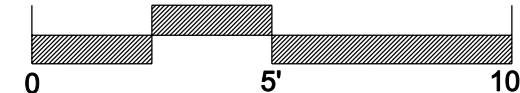


MODIFY EXISTING HOT AND CHILL WATER SUPPLY LINES AND EXTEND TO NEW AHU COIL CONNECTIONS. SEE PIPING SCHEMATIC ON SHEET M-404.

EXISTING AHU-V MECHANICAL PLAN

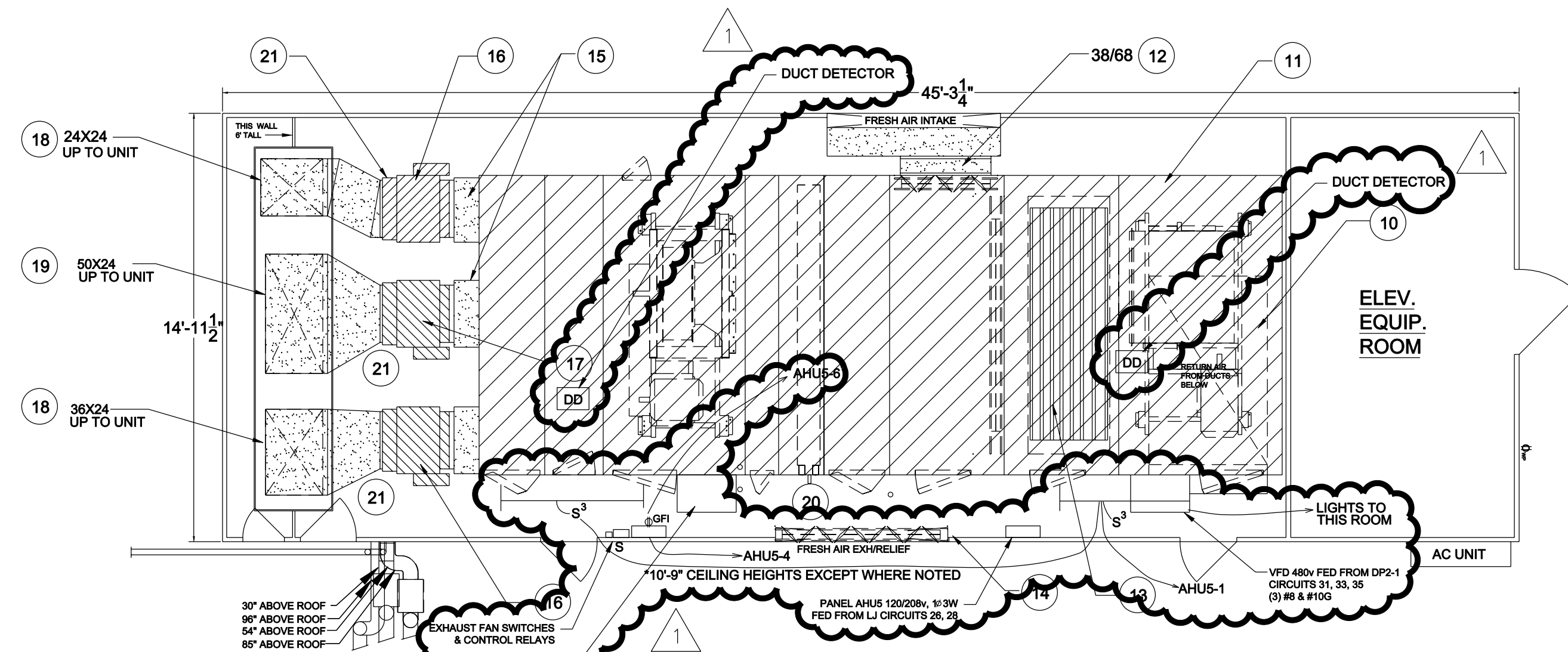
SCALE: 1/4" = 1'-0"



LEGEND	
DD	DUCT DETECTOR LOCATION
T	THERMOSTAT LOCATION
HH	DIGITAL CONTROLLER

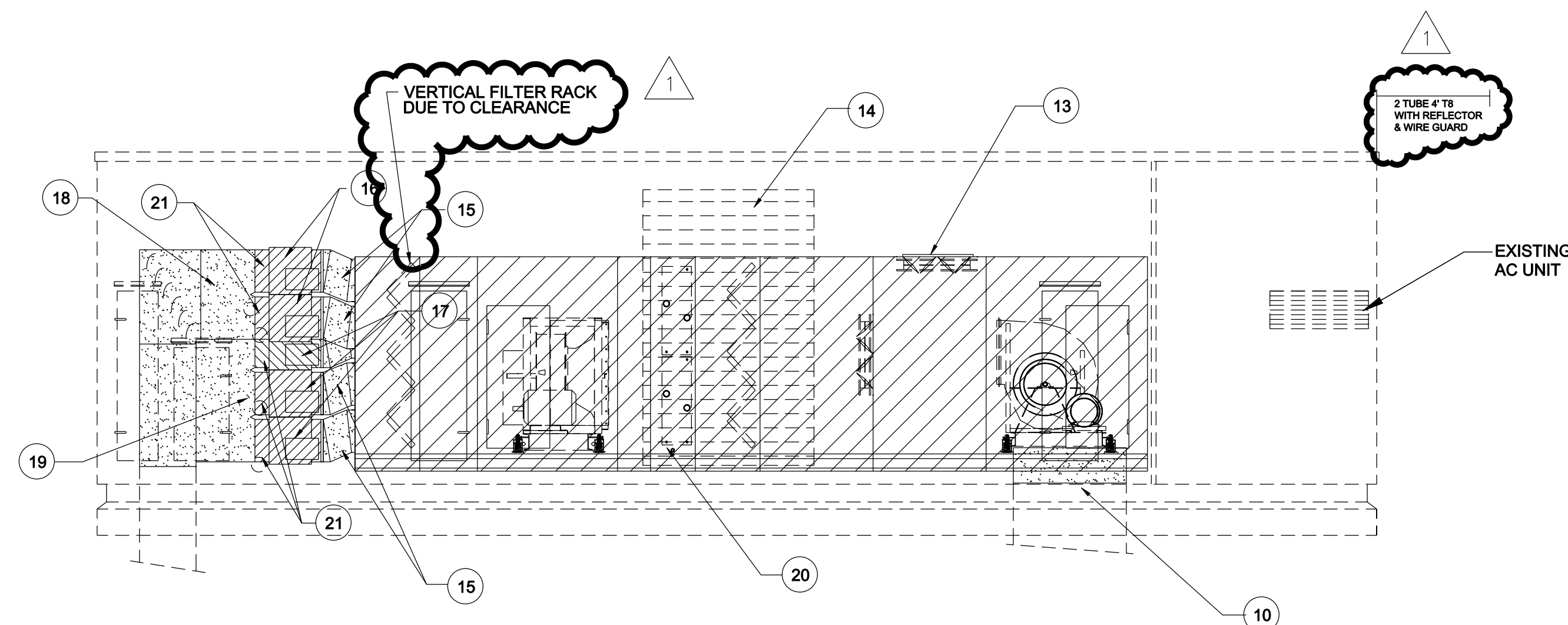
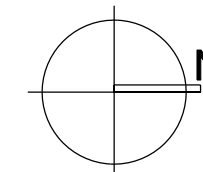
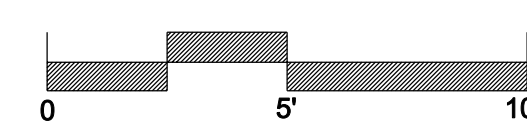
KEYED NOTES:

- MODIFY EXISTING RETURN AIR OPENING THROUGH BOTTOM OF EXISTING HOUSING. REMOVE THE EXISTING FLOOR GRATING AND MODIFY OPENING TO CONNECT TO BOTTOM CONNECTION OF NEW AIR HANDLING UNIT.
- REMOVE EXISTING UNIT CONTROLS CABINET AND SPEED CONTROLLERS TO ALLOW INSTALLATION OF NEW AIR HANDLING UNIT. REMOVE ALL ASSOCIATED CONDUIT, POWER WIRING, ETC.
- REMOVE SUPPLY AND RETURN FANS ALONG WITH ASSOCIATED SUPPORT STRUCTURES, POWER WIRING, CONTROLS, ETC. MAKE SURFACES READY TO ACCEPT NEW AIR HANDLING UNIT.
- EXISTING RELIEF LOUVER AND CONTROL DAMPER TO REMAIN. CONTROL DAMPER SHALL BE PROVIDED WITH NEW OPERATORS AND INTERLOCKED WITH THE RELIEF DAMPER ON THE NEW AIR HANDLING UNIT. NOTE THAT THE EXISTING HOUSING SHALL BE A RELIEF PLENUM.
- REMOVE EXISTING FILTERS, DAMPERS, PARTITIONS, ETC IN EXISTING HOUSING TO MAKE WAY FOR THE NEW AIR HANDLING UNIT.
- NOTE THAT THE EXISTING LOUVER SHALL BE RELOCATED TO WHERE SHOWN ON THE REVISED ENCLOSURE THIS SHEET TO ALIGN WITH THE NEW FRESH AIR INTAKE DAMPER AND PORT ON THE THE NEW AIR HANDLING UNIT. THE EXISTING DAMPER WILL NOTE BE USED AND SHALL BE REMOVED. MAKE LOUVER READY FOR NEW INSULATED PLENUM AT NEW LOCATION.
- REMOVE THE EXISTING COOLING AND HEATING COILS AND ASSOCIATED ITEMS. CONNECT TO EXISTING CHILL AND HOT WATER PIPING WITH EXTENSIONS AND CONNECTIONS TO NEW COILS.
- MODIFY EXISTING PIPING CONNECTIONS TO ENCLOSURE TO COORDINATE WITH NEW AIR HANDLING UNIT COOLING COIL AND VAV BOXES HEATING COILS.
- REMOVE THE EXISTING MULTI-ZONE DAMPERS AND ALL ASSOCIATED ITEMS.
- CONNECT RETURN AIR OPENING IN FLOOR OF EXISTING ENCLOSURE WITH THE NEW AIR HANDLING UNITS BOTTOM RETURN CONNECTION.
- COORDINATE WITH THE ELECTRICAL AND GENERAL CONTRACTOR FOR INSTALLATION OF EACH SECTION OF THE NEW AIR HANDLING UNIT IN THE EXISTING ENCLOSURE.
- RELOCATE THE EXISTING FRESH AIR INTAKE LOUVER TO ALIGN WITH THE NEW AIR HANDLING UNIT FRESH AIR DAMPER. PROVIDE 12" DEEP INSULATED PLENUM AT LOUVER WITH DUCT EXTENSION TO DAMPER SECTION AT UNIT.
- NOTE THAT THE RELIEF DAMPER AT THE AIR HANDLING UNIT SHALL OPEN TO THE INSIDE OF THE ENCLOSURE.
- THE EXISTING RELIEF LOUVER DAMPER SHALL BE INTERLOCKED WITH THE AIR HANDLING UNIT RELIEF DAMPER TO OPEN FULL AT ANY AMOUNT OF RELIEF. THE UNIT DAMPER SHALL MODULATE TO MAINTAIN SPECIFIED FRESH AIR QUANTITIES.
- PROVIDE OFFSET PLENUMS CONNECTED TO THE FILTER HOUSING TO ALLOW THE VAV DAMPERS TO BE STACKED AND POSITIONED TO ALLOW ACCESS TO EACH DAMPER CONTROL AND HEATING COILS.
- MOUNT TWO 24"x 18" VAV BOXES WITH RE-HEAT COILS STACKED HIGH IN THE SPACE.
- MOUNTED THREE 24"x 18" BOXES WITH RE-HEAT COILS STACKED LOW IN THE SPACE.
- EXTEND COMBINED SUPPLY DUCT FROM THE TWO VAV BOXES HIGH IN THE ENCLOSURE TO ALLOW ACCESS TO THE THREE VAV BOXES LOCATED IN THE CENTER. NOTE THAT THE CONTROL SECTIONS AND COIL CONNECTIONS SHALL BE ORIENTED TO THE OUTSIDE TO ALLOW ACCESS AND SERVICE.
- EXTEND THE COMBINED SUPPLY DUCT FROM THE THREE STACKED VAV BOXES AND CONNECT TO THE EXISTING 50/24 SUPPLY DUCT DOWN TO ABOVE CEILING OF SECOND FLOOR.
- EXTEND NEW INSULATED CHILL WATER LINES TO NEW COIL AND PROVIDE FEATURES INDICATED IN COIL PIPING SCHEMATIC.
- EXTEND NEW INSULATED HOT WATER LINES TO EACH OF THE SEVEN VAV REHEAT COILS AND PROVIDE FEATURES INDICATED IN THE COIL PIPING SCHEMATIC.



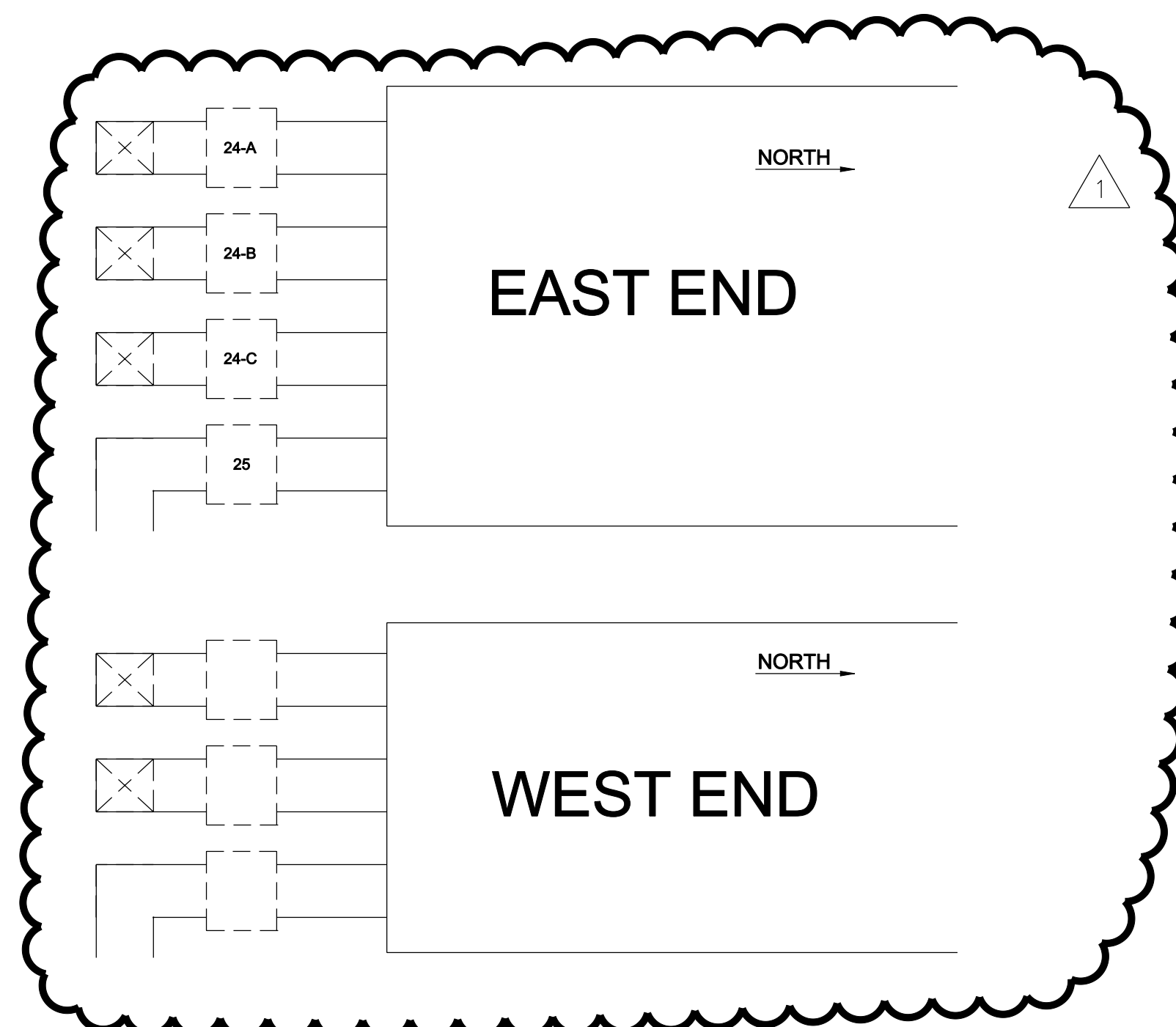
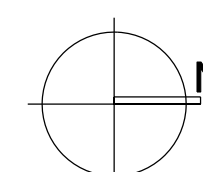
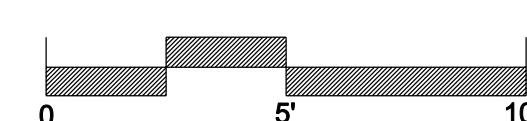
AHU-V SYSTEM PLAN VIEW

SCALE: 1/4" = 1'-0"

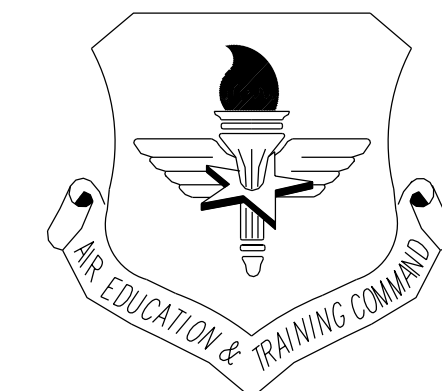


AHU-V SYSTEM ELEVATION

SCALE: 1/4" = 1'-0"



AS-BUILT



LITTLE ROCK A.F.B.
ARKANSAS

MTE MIKE TRUSTY
ENGINEERING
PHONE: (501)224-9013
FAX: (501)421-0151
miketrusty@msn.com

PROJECT TITLE	DATE	BY	APP'D
REPAIR & RENOVATE MEDICAL CLINIC PH V			
LITTLE ROCK AIR FORCE BASE			
JACKSONVILLE, ARKANSAS			
CHANGE ORDER TO PHASE V - 100% SUBMITTAL			
1	7/11/11	LNW	BY
As-Built Revisions	Date	Revision/Issue	No.

PROJECT TITLE	DATE	BY	APP'D
REPAIR & RENOVATE MEDICAL CLINIC PH V			
LITTLE ROCK AIR FORCE BASE			
JACKSONVILLE, ARKANSAS			
CHANGE ORDER TO PHASE V - 100% SUBMITTAL			
1	7/11/11	LNW	BY
As-Built Revisions	Date	Revision/Issue	No.

MECHANICAL
AHU-V SCHEDULE & DETAILS

DESIGNED BY
GMT

LEAD DESIGNER
GMT

TECH REVIEWER
GMT

PROJECT NUMBER
NKAK#06-8006-5

DATE
DEC. 3, 2010

SHEET
M-403

SCALE
AS SHOWN

18 of 21